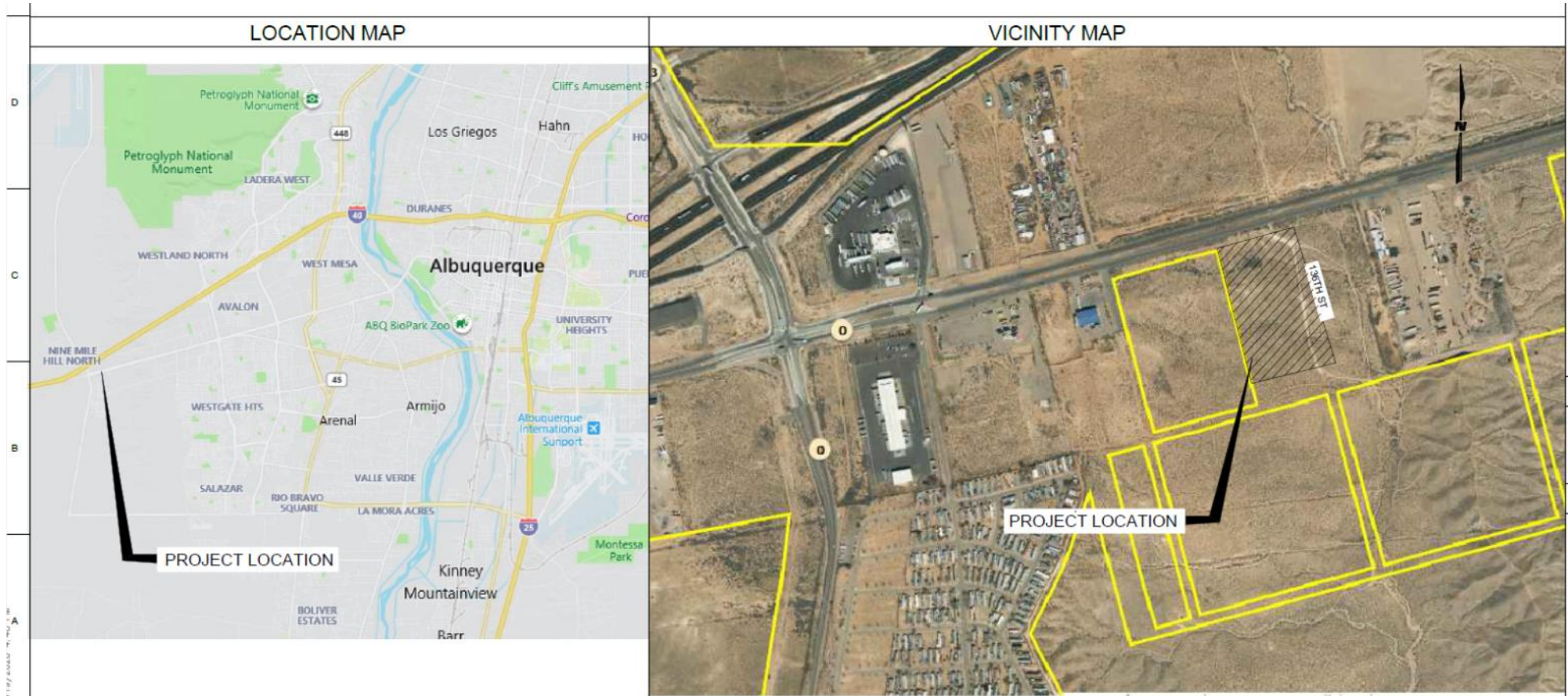




Proposed Locations for Public Artwork at the Route 66 Visitors Center



The Route 66 Visitors Center will be located at 12200 Central Ave SW ABQ NM 87121.



North-facing side of the Visitor Center, viewed from Central Avenue.

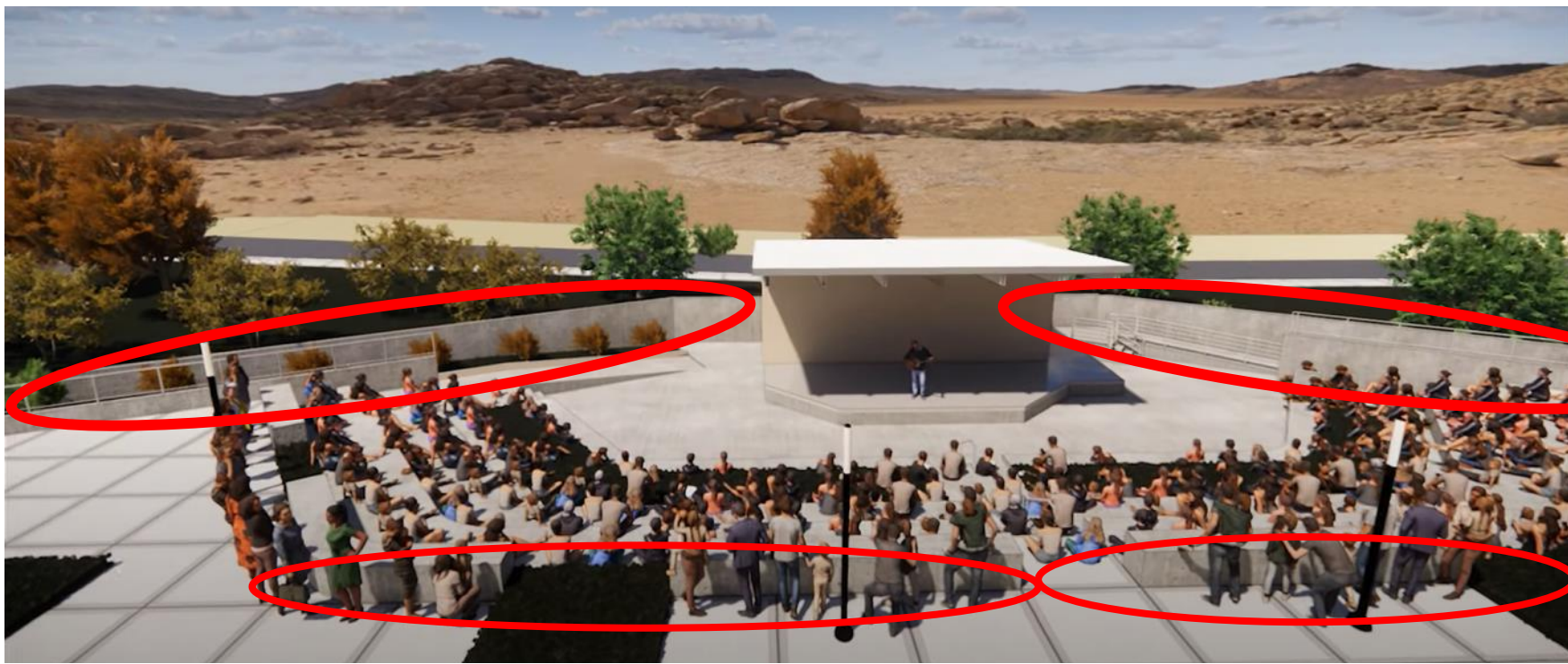
Areas along the walkways are available for a public artwork.



The Route 66 Visitors Center (looking south and west). Front entrance paved walkway and landscaped areas near stage are available for a public artwork.



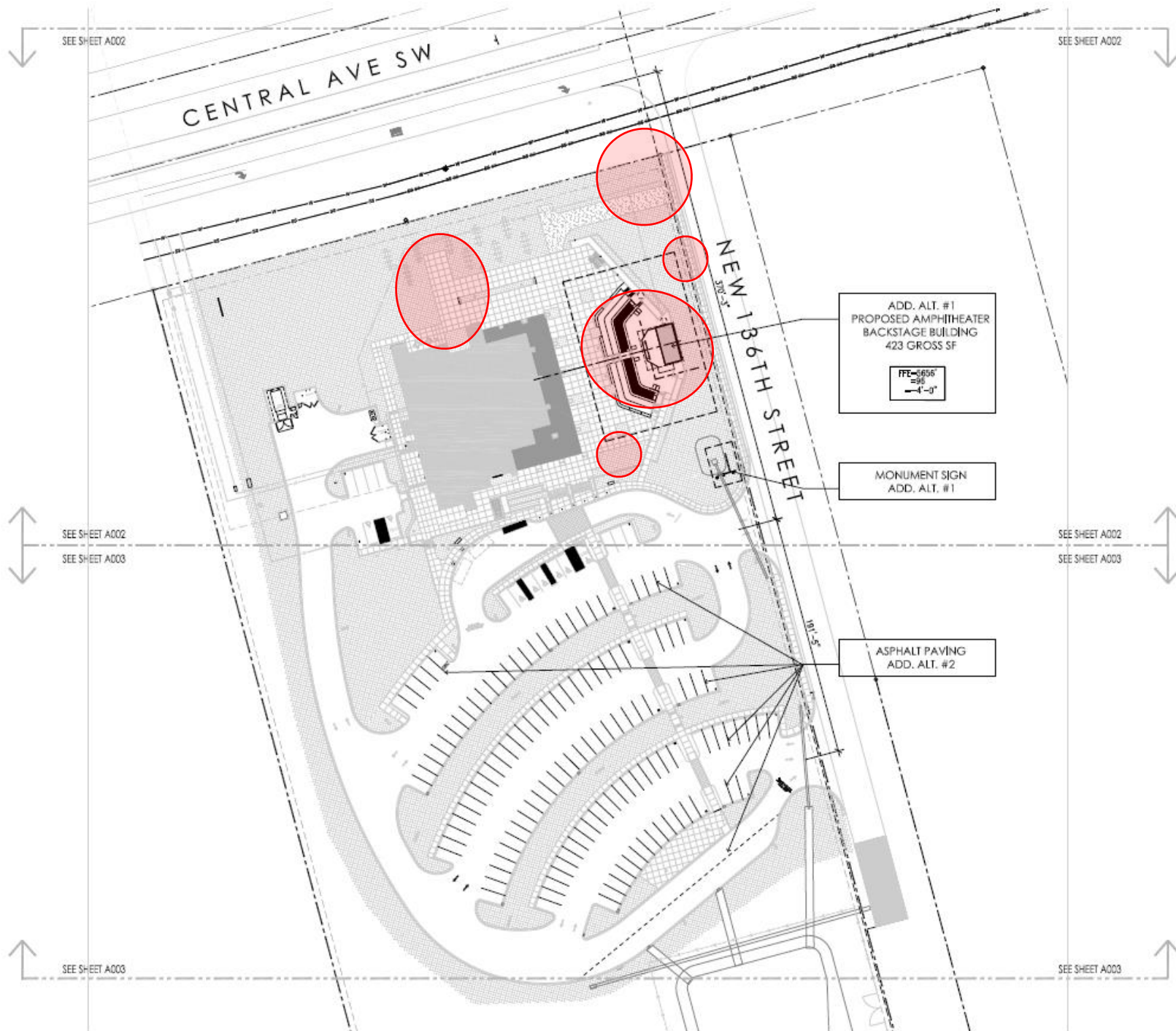
Stage and seating area (looking north and west towards the main building). Landscaped area near stage are available for a public artwork.



Stage and seating area. The west-facing surfaces of the wall next to the stage and the west facing surfaces of the seating areas could be used for an art element.



The landscaped areas behind and next to the stage are available for a public art piece.



Overview of possible locations for public artworks at the Route 66 Visitors Center.