

SITE PLAN/TRANSPORTATION ART GUIDELINES



Washington Street Underpass Public Art Project San Juan Bautista, CA Clean California Program, 2022



Figure 1 Washington Street Underpass North Façade (View Looking South)



Figure 2 Washington St Underpass Inside Walls (View Looking South)

SITE PLAN/TRANSPORTATION ART GUIDELINES



Figure 3 Washington St Underpass Inside Walls and South Façade (View Looking North)



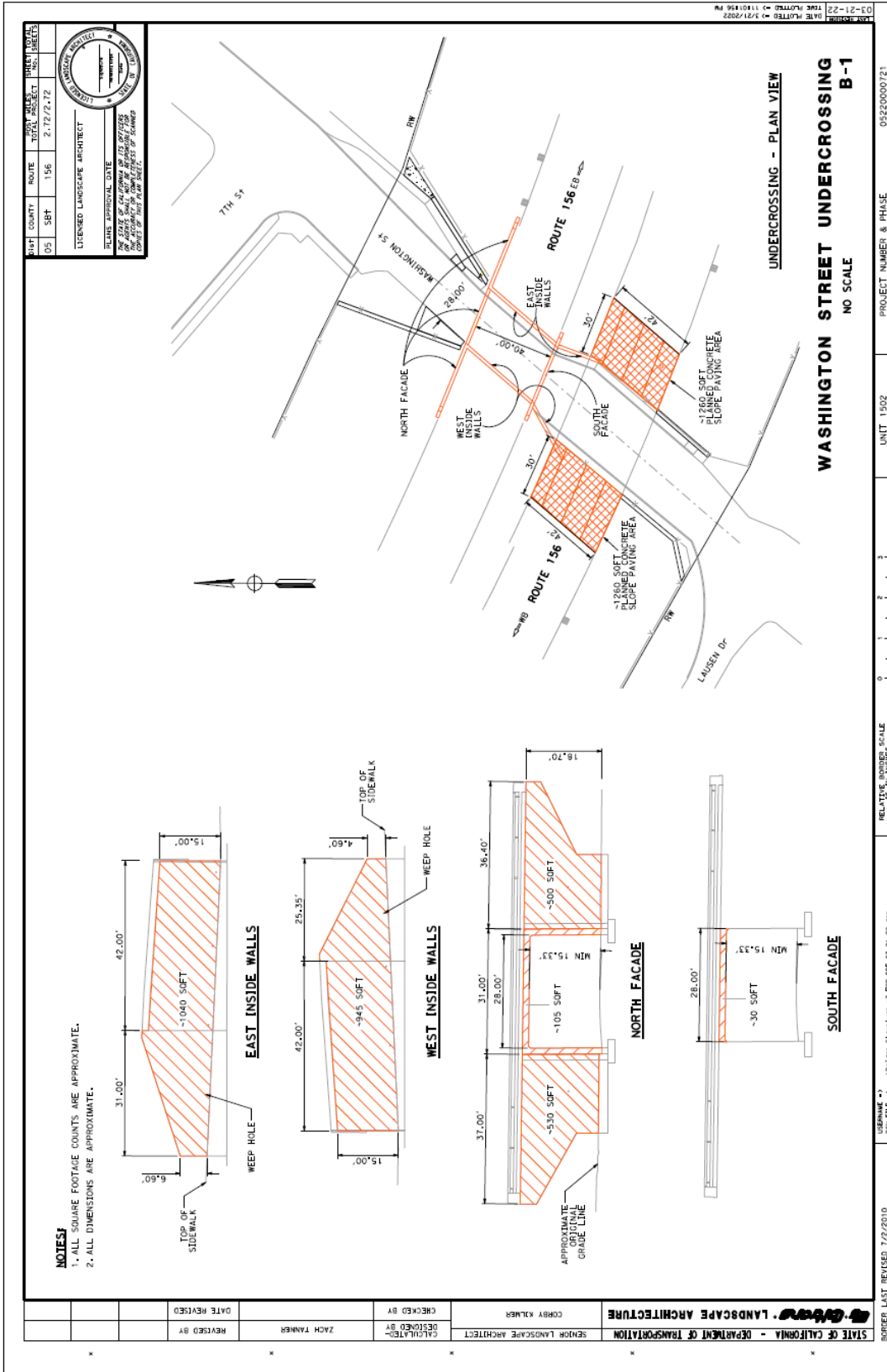
Figure 4 Planned Concrete Slope Paving Area East Side



Figure 5 Planned Concrete Slope Paving Area West Side

SITE PLAN/TRANSPORTATION ART GUIDELINES

ATTACHMENT 1



SITE PLAN/TRANSPORTATION ART GUIDELINES

ATTACHMENT 2

Caltrans Transportation Art Guidelines

The full text of the Caltrans Transportation Art Program Guidelines can be found at:

<https://dot.ca.gov/programs/design/lap-landscape-architecture-and-community-livability/lap-liv-j-transportation-art>

Artists are advised to read the Caltrans Transportation Art Guidelines and Application fully. Artists selected for this project will not have to submit an Encroachment Permit Application, (this will be done for you), however, **you will be required to sign all copyright waivers as noted in the application packet.**

A summary of key artwork requirements is as follows:

What can be proposed?

Transportation Art is a visual expression that reflects the local communities' unique aesthetic, environmental, scenic, historical and cultural values. Transportation Art includes graphic or sculptural artwork, either freestanding or placed upon a required engineered transportation feature.

Transportation Art must not:

- Display text, symbols, or icons such as flags, logos, or commercial symbols, except as allowed in Sub-article "Sponsor Recognition" of the [Project Development Procedures Manual \(PDPM\)](#) Chapter 29, Section 9.
- Simulate color combinations of colors usually reserved for official traffic control devices described in the [Manual on Uniform Traffic Control Devices \(MUTCD\)](#).
- Imitate, obscure, or interfere with traffic control devices.
- Restrict sight distance.
- Create a distraction to transportation system users.
- Include distracting illumination.
- Include reflective or glaring surface finishes.
- Include moving elements (kinetic art) or simulate movement.
- Interfere with airspace above the roadway.
- Be placed upon trees, rocks or other natural features.
- Adversely affect existing structures, drainage patterns or stormwater runoff quality, landscaping or natural vegetation.

Transportation Art must:

- Include graphics or sculptural artwork that expresses unique attributes of an area's history, resources, or character.
- Be integrated with an engineered transportation feature or be a freestanding structure.
- Be appropriate to its setting and be in proper scale with its surroundings.
- Be located where maintenance can be safely performed as specified in the encroachment permit, the maintenance agreement, and in conformance with Caltrans' procedures.
- Be composed of materials that are durable for the projected lifespan.

SITE PLAN/TRANSPORTATION ART GUIDELINES

- Be fully funded for design and installation, and for maintenance, restoration, and removal by others for its projected lifespan.
- Conform to provisions of the [California Outdoor Advertising Act](#).
- Be designed to minimize ongoing maintenance needs. Approved Caltrans protective graffiti coatings may be required if appropriate.
- Be consistent with Headquarters Division of Maintenance-Structure Maintenance and Investigations inspection requirements, including the following:
 - Paint used on structures should not fill or obscure cracks. Latex or other flexible type paints may not be used on concrete structures except with written permission from Caltrans.
 - Painted art is limited to the areas shown on [Attachment 1](#).
 - Artwork must not hinder inspection of structures.
 - To facilitate Caltrans' safety inspections, mural art may be placed on removable panels.
 - Chipping, blasting, or modifying existing concrete surfaces is prohibited.