



SITE PLAN

Public Art Opportunity

Artistic Metal Structures for N Street Park Stage

The Davis Manor Neighborhood was developed in the 1950s as one of Davis' first subdivisions. Located east of downtown, the neighborhood of modest homes has traditionally been one of the most affordable neighborhoods in Davis and an incubator of creative innovation. The neighborhood is home to [N Street Co-Housing](#), one of the first retrofit co-housing communities in the country; DaVinci High School, a public charter school focused on project-based learning and use of technology; and the City of Davis [Pilot Daytime Homeless Respite Center](#).

N Street Park is a small neighborhood park that is tucked into a narrow ¼-acre lot at the south end of N Street in the middle of the Davis Manor Neighborhood. The park is bordered by private residences to the north and elsewhere by the City of Davis Public Works Corporation Yard. A defining feature and focal point of the park is a 15-foot-tall concrete muraled wall on the south side of the park. A narrow, landscaped trail connects the park to the Davis Community Garden nearby.

The park is undergoing a community-driven effort to renovate and enliven the space, which includes the redesign of the landscape, playground, and creation of a public outdoor stage. The vision for the N Street Park stage is to create a space that will be well suited to small musical and theatrical performances and other presentations by neighborhood residents and local performing arts groups seeking an intimate equipped outdoor venue. Design for the stage, superstructure (Element 1) and screen (Element 2) should take such possible community uses into full consideration.

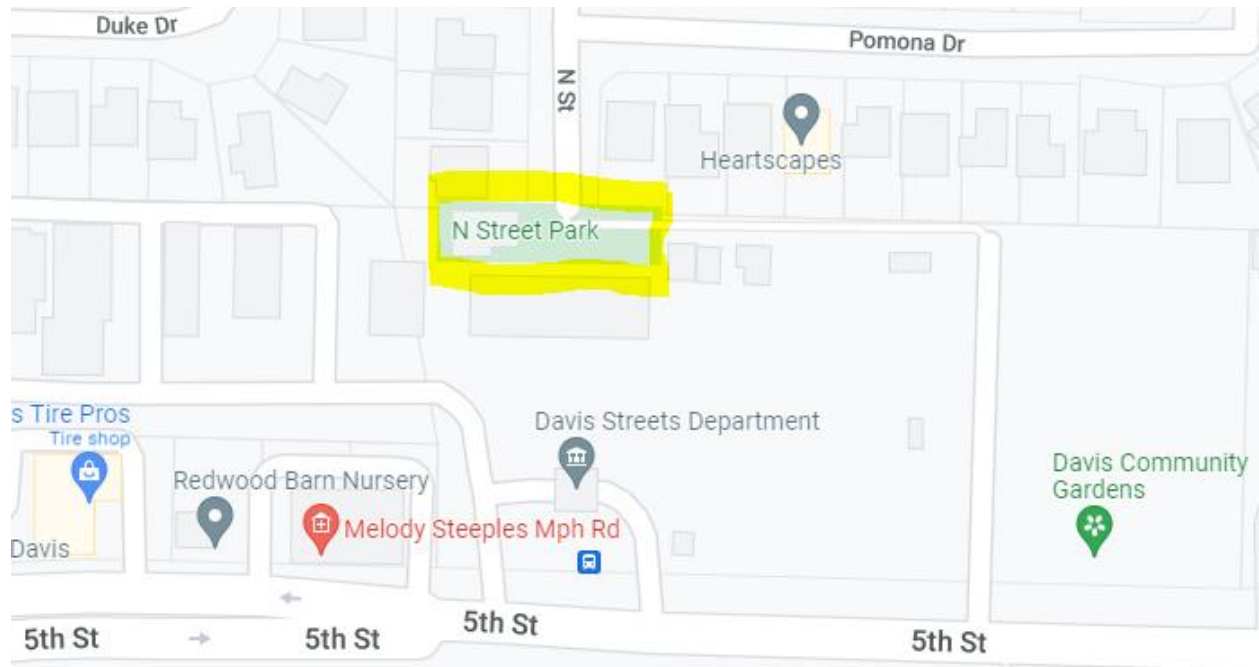
Element 1: Metal Superstructure

The metal superstructure for the stage is envisioned as an artistically designed overhead framework that could be used to support lighting, backdrops, curtains, a fabric canopy, etc. Design considerations include engineering for safety, incorporation of proper piping for theatrical lighting (1.5" batten) and strategizing for a variety of theatrical uses. Minimum height for the superstructure is around 10 feet.

Element 2: Metal Screen

The metal screen is envisioned as an artistically designed open framework, approximately 4 feet high and 8 feet wide, positioned at the back, or upstage edge of the stage where it would partially screen the "backstage" area from audience view. Design considerations include the need to retain ADA-compliant access to the stage, potential use for hanging or supporting backdrops or curtains, and the possibility of having moving parts that can swing open and allow adaptation for different uses.

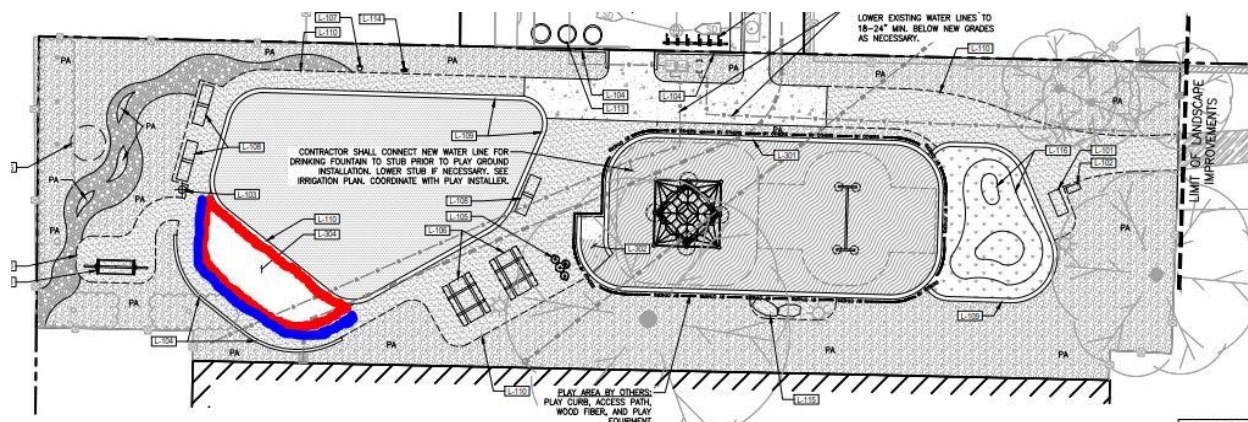
Map of site and surroundings:



Map of N St Park and Redesign

Red line delineates the location of Element 1: Metal Superstructure

Blue line delineates location of Element 2: Metal Screen:



N St Park pre-redesign, standing at Community Garden pathway and looking toward future stage site at the back left corner of the plot:



Stage will be located where the bench and cement slab are shown below.



CONTACT PERSON

Questions, inquiries, and requests for additional information should be directed to:
Rachel Hartsough, Arts & Culture Manager, 530-757-5640, rhartsough@cityofdavis.org.