



NINE dot ARTS

**Public Art Commission, RFQ**

# **FIRE STATION 27**

**City of Kirkland**

# INTRODUCTION

# REQUEST FOR QUALIFICATIONS

**The City of Kirkland is seeking a qualified Artist for a public art commission in the new Fire Station 27 to be installed in March of 2023. This public art commission is funded by the city of Kirkland's 1% for Art program. 1% for Art is assessed on qualified capital improvement projects (CIP) that are undertaken by the City of Kirkland. The Kirkland Cultural Arts Commission (KCAC) together with City staff curates and advises the City Council on public art acquisitions and loans, and it reviews and recommends projects under the City's "1% for Art" program.**

**Read on for the project information including art location(s), schedule, budget and submittal requirements**

**Issue date: April 15<sup>th</sup>, 2022**

**Deadline to submit: May 2<sup>nd</sup>, 2022**

PROJECT  
COMMITTEE



**CITY OF KIRKLAND**



**KIRKLAND FIRE  
DEPARTMENT**



**KIRKLAND CULTURAL  
ARTS COMMISSION**

# PROJECT INFORMATION

# COMMISSION GOALS

&

# VALUES

The City of Kirkland Fire Department is a pillar of the Kirkland community providing a sense of safety and stability helping individuals in need and supporting the city as a whole.

The art commission will honor the fire department history and promote a bright future with themes of hope, resiliency, positivity, and inclusivity.

Visual elements will strive to reinforce the unconditional response and community support that is emblematic of fire department services.

**Spirit of service**

**Inclusive**

**Accessible**

**Historic**

**Commemorative**

**Luminous**

**Cohesive**

**Dynamic**

**Hopeful**

**Relatable**

# FIRE STATION 27 SIGNIFICANCE

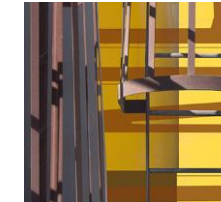
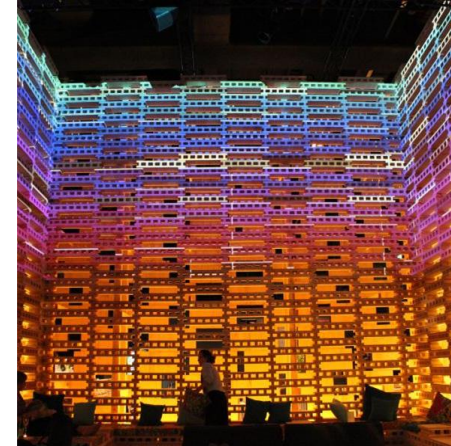
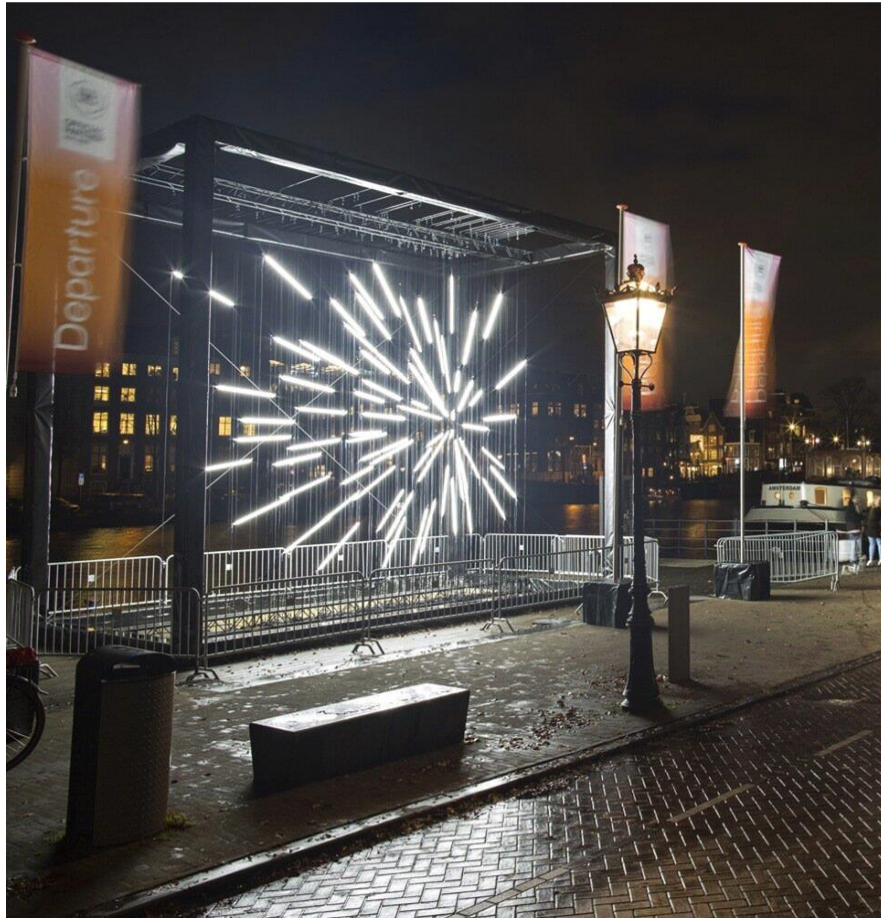
At Fire Station 27, the City of Kirkland would like to commission an art installation that honors the people of the fire service and their unwavering daily commitment to community. Fire services play a significant role in all communities, whether as first responders to major events like 9/11, or as front-line workers during global events such as the Covid 19 pandemic.

In particular, the City wishes to honor the men and women who played a critical and unwavering role protecting the health and safety of the community during the COVID-19 global pandemic, acknowledging that the first US fatality of a COVID-positive person in the US occurred at Evergreen Health, adjacent to the Fire Station 27 site.

This art commission provides a unique opportunity to honor the fire department history, the legacy of community services, and to promote a bright future with themes of hope, resiliency, positivity, and inclusivity. Visual elements within the art installation can reinforce the unconditional response and community support that is emblematic of fire department services.



# ART CONCEPTS AND STYLES

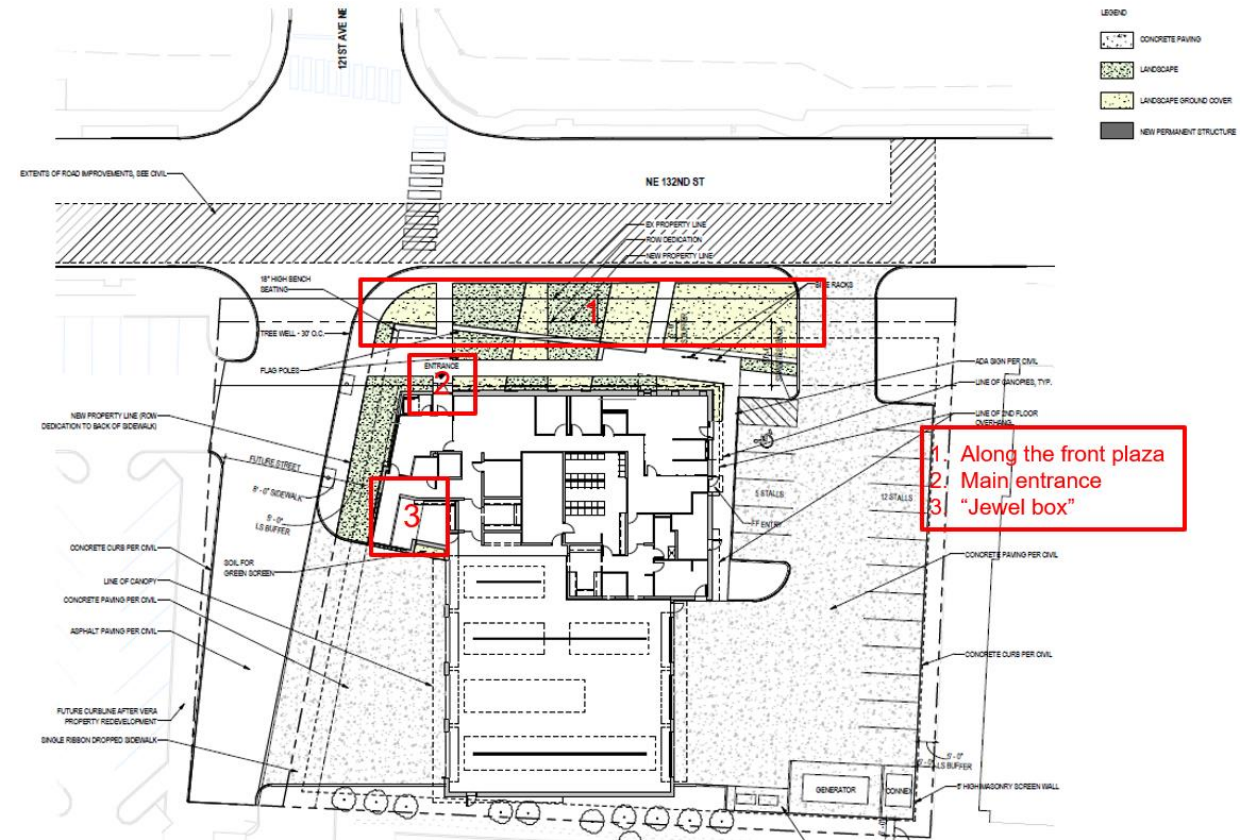




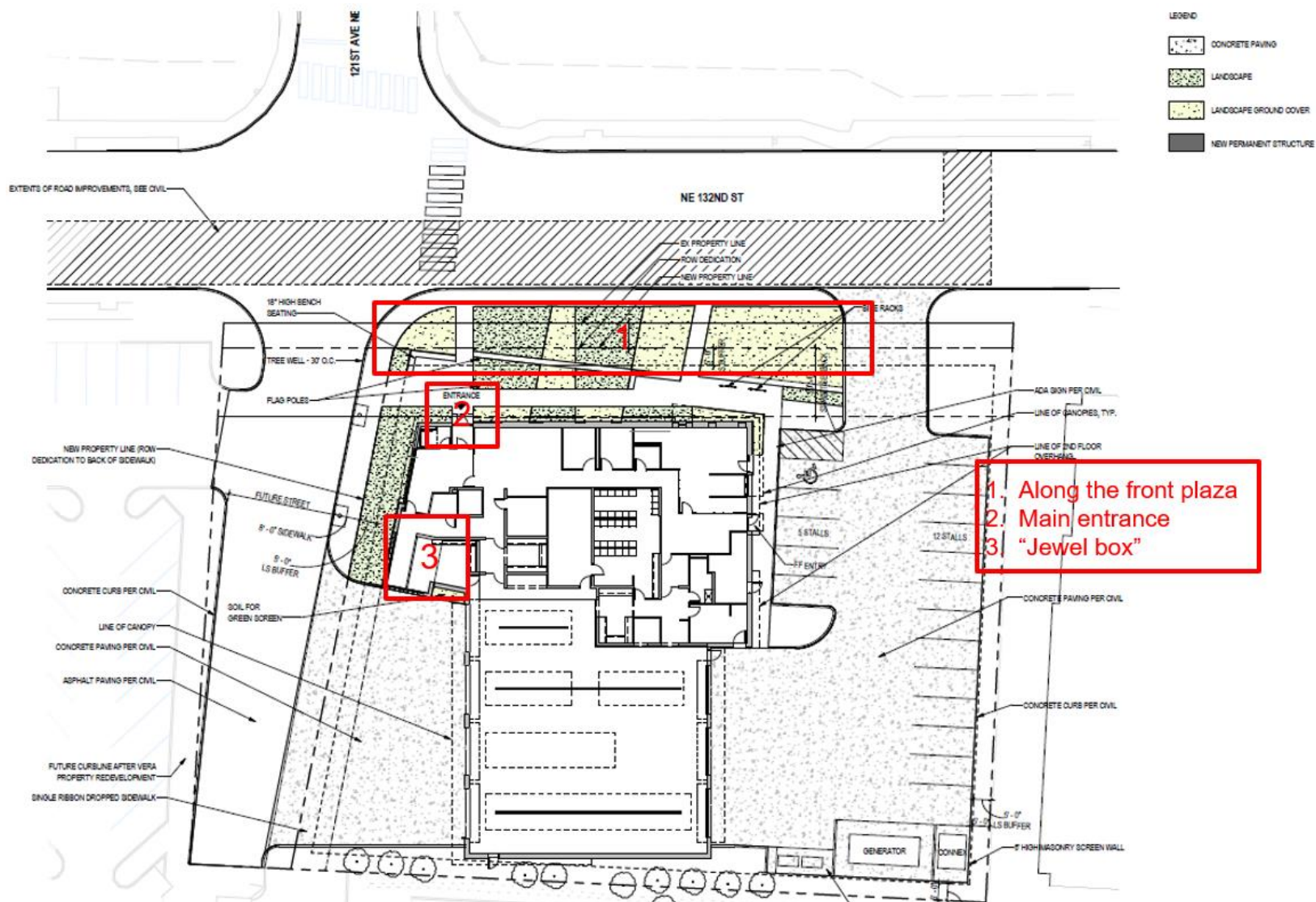
# ART LOCATIONS

## STATION 27

13118 121st. Way NE, Kirkland, WA 98034



## ART LOCATIONS



# PROJECT BUDGET

**Budget range is \$150,000 - \$180,000 Total\***

<b>Commission</b>	<b>\$</b>	<b>125,000.00</b>
<b>Taxes</b>	<b>\$</b>	<b>12,750.00</b>
<b>Install</b>	<b>\$</b>	<b>12,500.00</b>
<b>Contingency</b>	<b>\$</b>	<b>12,000.00</b>
<b>TOTAL*</b>	<b>\$</b>	<b>162,250.00</b>

**\*Total includes artist fees,  
materials, fabrication, and  
allowances for taxes, artist  
installation and artwork  
contingency**

**Artists will be selected on the basis of the fit of their concept for this project and the strength of their past work. For applicants without a history of past public art commissions, you will need to describe why you would be a good fit for this project. Previous public art experience is not required. Applicants will be reviewed and ranked on the following:**

- **Quality of concept, design, and craftsmanship of past works**
- **Creativity of Approach**
- **Relevance of concept proposal, and familiarity with, the Kirkland community**
- **Visual and technical sophistication**

**April 20<sup>th</sup>, 2022- Questions due in writing to [janet@ninedotarts.com](mailto:janet@ninedotarts.com)**

**May 2<sup>nd</sup>, 2022 - Deadline to submit**

**May 16<sup>th</sup>, 2022 – Finalists announced with a stipend for project concept designs**

**June 1<sup>st</sup>, 2022 - Finalists project concept designs submitted**

**July 8<sup>th</sup>, 2022 – Commission awarded**

**May 2023 - Project installation**

# **SUBMITAL REQUIREMENTS**

- 1. Artist Name (or names of team members if applying as a collaboration),  
Phone number and email**
- 2. Website and/or Social Media Links if applicable**
- 3. Five to ten images of relevant examples of past work (video accepted).  
Images should represent the artist's style, format, medium, or breadth of work.  
Please include scale and medium for all works—and if a public installation,  
include the year installed and its location.**
- 4. Resume or CV**
- 5. In 150 words or less, please describe your project approach and intention to  
create connections to the Kirkland community**
- 6. Two references**



# ADDITIONAL INFORMATION

# BACKGROUND INFORMATION

The City of Kirkland is located on the eastern shore of Lake Washington. It is a suburban city, surrounded by other suburban cities and pockets of unincorporated King County. The City is near several major transportation routes including Interstate 405, State Route 520, and Interstate 5. These routes connect the City economically and socially to the greater Seattle area.

At the time of incorporation in 1905, the City of Kirkland's population was approximately 530. The current estimated population is 88,940. Kirkland is the thirteenth largest city in the State of Washington and the sixth largest in King County.

Since its incorporation, Kirkland has grown in geographic size to eighteen square miles - approximately twenty times its original size. This growth occurred primarily through the consolidation of the cities of Houghton and Kirkland in 1968, the annexations of Rose Hill and Juanita in 1988 and the annexation of North Juanita, Finn Hill, and Kingsgate areas in 2011.

Kirkland operates under a Council-Manager form of government. The City Council is the policymaking branch of Kirkland's government and consists of seven members elected at large to staggered, four-year terms. The Mayor is elected from within the Council. The City Council is supported by several advisory boards and commissions and the City Manager. The City Manager is appointed by the City Council and serves as the professional administrator of the organization, coordinating its day-to-day activities.

# KIRKLAND FIRE DEPARTMENT

---

The Kirkland Fire Department provides a wide range of critical fire and life safety services to Kirkland's 93,000 residents

Washington became a state in 1889. That same year the Great Seattle Fire destroyed much of the heart of that city and the people of Kirkland watched as smoke rose across Lake Washington for days. One year later, in 1890, the Kirkland Fire Department was formed.

Since those austere beginnings, the department has added Hazardous Materials, Technical Rescue, Emergency Medical Services, Emergency Management and Water Rescue to our list of services. Emergency Medical Services (EMS) now constitute nearly 75% of our calls for service. The Fire Department is truly an "all hazards" response team.

The dedicated men and women of the Kirkland Fire Department are committed to providing the best services possible, twenty-four hours a day, seven days a week, 365 days a year.

# KIRKLAND FIRE DEPARTMENT

Kirkland Fire Department employs approximately 115 employees who are involved in a diverse range of activities. The department provides 24-hour coverage for fire suppression, technical rescue, hazardous materials and emergency medical responses. The department also provides fire prevention and education, fire investigations, inspections, code compliance and disaster preparedness services to the population. The City of Kirkland has six fire stations

**Station 21-Forbes Creek (expansion and remodel)**

9816 Forbes Creek Drive

**Station 22-Houghton (expansion and remodel)**

6602 108th Ave NE

**Station 25-Juanita**

12033 76th Place NE

**Station 26-North Rose Hill (expansion and remodel)**

9930 124th Ave NE

**Station 27-Totem Lake (new station forthcoming)**

11210 NE 132nd St.

**Station 24 – New station is open!**

NE 132nd St. and 100th Ave NE

# KIRKLAND ART POLICY

1% for Art is assessed on qualified capital improvement projects (CIP) that are undertaken by the City of Kirkland. The Kirkland Cultural Arts Commission (KCAC) together with City staff curates and advises the City Council on public art acquisitions and loans, and it reviews and recommends projects under the City's "1% for Art" program.

Each of the four fire station projects is assigned an art budget commensurate with 1% of the total project budget.

The Fire Station Art Steering Committee (Steering Committee) will be formed, consisting of the art consultant, representatives from the project teams, the Kirkland Fire Department, the City Manager's Office and the Kirkland Cultural Arts Commission.

# KIRKLAND CULTURAL ARTS COMMISSION

The Kirkland Cultural Arts Commission (KCAC) The Kirkland Cultural Arts Commission is responsible for helping the City Council implement the Public Art Vision in Kirkland. The KCAC is a volunteer advisory board that works to help arts, culture and heritage grow and thrive in the City of Kirkland. Along with supporting art and cultural initiatives, the KCAC promotes strategic arts planning and advises the City Council on art acquisition in Kirkland.

Public Art Vision Kirkland maintains a diverse public art collection that invites interaction, fosters civic identity and community pride, inspires a sense of discovery, stimulates cultural awareness, and encourages economic development.



# KIRKLAND CULTURAL ARTS COMMISSION

## KCAC Goals:

- Curate a diverse public art collection representing various cultural and ethnic communities and perspectives
- Facilitate exposure to public art
- Encourage community dialogue through public art
- Use public art to reflect the characteristics of the greater Kirkland community
- Determine that the art is appropriate for its location
- Regularly re-evaluate the Commission's policies, practices, and programs to ensure there are no structural barriers to artists from historically marginalized communities

# RESOLUTION 5240 AND 5434

## **SAFE, INCLUSIVE AND WELCOMING CITY**

The artwork should invigorate, inspire and energize the Kirkland community, communicate Kirkland as a safe, inclusive and welcoming place, celebrate diversity and honor social and racial justice qualities that are in accordance with Kirkland Resolution 5240 (2017) which affirms that Kirkland is a safe, inclusive and welcoming community, and/or Resolution 5434 (2020) which affirms that Black lives matter.

# KIRKLAND DEMOGRAPHICS

According to the most recent ACS, the racial composition of Kirkland was:

- White: 75.70%, Asian: 14.43%, Two or more races: 5.66%, Other race: 2.50%, Black or African American: 1.36%, Native American: 0.26%, Native Hawaiian or Pacific Islander: 0.08%,
- Kirkland is currently growing at a rate of 3.23% annually and its population has increased by 103.36% since the most recent census, which recorded a population of 48,787 in 2010. Spanning over 22 miles, Kirkland has a population density of 5,571 people per square mile.
- The average household income in Kirkland is \$153,012 with a poverty rate of 6.11%. The median rental costs in recent years comes to \$1,861 per month, and the median house value is \$662,300. The median age in Kirkland is 37.4 years, 36.8 years for males, and 38.3 years for females.

# RESPECT AND HONOR FIRE SERVICES

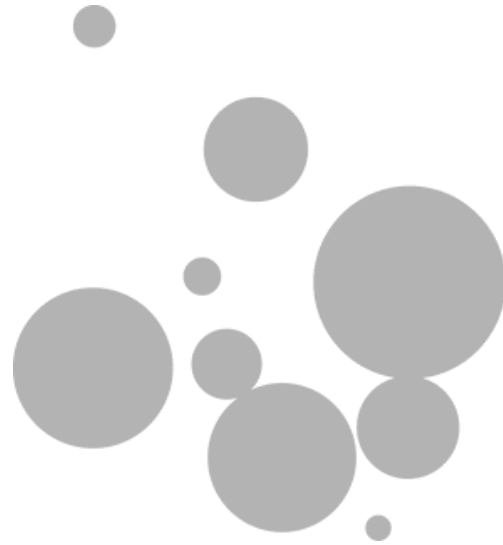
The artwork should respect and honor fire services. Both a recently renovated Kirkland fire station (Fire Station 25) and a fire station under construction (Fire Station 24), include/will include public art that features the Maltese Cross, the international symbol of fire fighting and a symbol of protection. There is a strong desire to maintain that similarity between all the artwork for the fire department. However, whether or not it is ultimately decided to keep this theme, the artwork should represent fire services, aid the station in being recognized by the public as a fire station, and provide a sense of community and welcoming to all.

People in Fire Services have saved lives, repaired lives, provided protection and safety for those in need, whether it be rescue, medical aid, or fire control.

We have an opportunity to elevate the public awareness, through art, about the important role fire departments play in community, beyond their role in responding to emergencies.



THANK YOU



NINE dot ARTS<sup>®</sup>