

PLANT LEGEND

TREES		
BOTANICAL NAME	COMMON NAME	SIZE
<i>Bauhinia lunarioides</i>	Anacacho orchid	36" Box
<i>Cercidium hybrid 'Desert Museum'</i>	Desert Museum Hybrid Palo Verde	36" Box
<i>Cercidium floridum</i>	Blue Palo Verde	36" Box
<i>Cercidium microphyllum</i>	Foothills Palo Verde	36" Box
<i>Cercidium Praecox</i>	Palo Brea	36" Box
<i>Chilopsis linearis 'Lucretia Hamilton'</i>	Desert Willow	24" Box
<i>Olneya tesota</i>	Ironwood	36" Box 54" Box
<i>Prosopis juliflora</i>	Native Mesquite	36" Box
<i>Prosopis Hybrid 'Phoenix'</i>	Thornless Hybrid Mesquite	36" Box

SHRUBS		
BOTANICAL NAME	COMMON NAME	SIZE
<i>Ambrosia deltoidea</i>	Bursage	1 Gallon
<i>Calliandra eriophylla</i>	Native Fairy Duster	1 Gallon
<i>Calliandra eriophylla</i>	Baja Fairy Duster	1 Gallon
<i>Cordia boissieri</i>	Texas Olive	5 Gallon
<i>Justicia californica</i>	Chuparosa	1 Gallon
<i>Dalea bicolor</i>	Silver Dalea	5 Gallon
<i>Dodonea viscosa</i>	Hopbush	5 Gallon
<i>Encelia farinosa</i>	Brittlebush	1 Gallon
<i>Ericameria laricifolia</i>	Turpentine Bush	1 Gallon
<i>Larrea tridentata</i>	Cresote	5 Gallon
<i>Leucophyllum langmaniae 'Lynns Legacy'</i>	Texas Sage	5 Gallon
<i>Leucophyllum laevigatum</i>	Chihuahuan Sage	5 Gallon
<i>Simmondsia chinensis</i>	Jojoba	5 Gallon
<i>Sphaeralcea ambigua</i>	Globemallow	1 Gallon

CACTUS / ACCENTS		
BOTANICAL NAME	COMMON NAME	SIZE
<i>Agave bovicornuta</i>	Cow Horn Agave	5 Gallon
<i>Agave parryi var. truncata</i>	Artichoke Agave	5 Gallon
<i>Agave weberi</i>	Weber's Agave	5 Gallon
<i>Carnegiea gigantea</i>	Saguaro	6'-8" Spear
<i>Dasylistron longissimum</i>	Toothless Desert Spoon	5 Gallon
<i>Dasylistron wheeleri</i>	Desert Spoon	5 Gallon
<i>Euphorbia antisyphilitica</i>	Candellilla	5 Gallon
<i>Hesperaloe funifera</i>	Giant Hesperaloe	5 Gallon
<i>Hesperaloe parviflora</i>	Red Yucca	5 Gallon
<i>Pedicularis macrocarpus</i>	Slipper Plant	5 Gallon
<i>Fouquieria splendens</i>	Occotillo	6'-8"
<i>Nolina microcarpa</i>	Beargrass	5 Gallon
<i>Opuntia engelmannii</i>	Native Prickly Pear	5 Gallon
<i>Yucca baccata</i>	Banana Yucca	5 Gallon
<i>Yucca pallida</i>	Pale Leaf Yucca	5 Gallon

VINES		
BOTANICAL NAME	COMMON NAME	SIZE
<i>Hardenbergia violacea</i>	Lilac Vine	5 Gallon
<i>Macfadyeni unguis cati</i>	Cat's Claw Vine	5 Gallon

PERENNIALS / GROUNDCOVERS		
BOTANICAL NAME	COMMON NAME	SIZE
<i>Baileya multiradiata</i>	Desert Marigold	1 Gallon
<i>Dalea greggii</i>	Trailing Indigo Bush	1 Gallon
<i>Penstemon parryi</i>	Parry's Penstemon	1 Gallon
<i>Dalea capitata 'Sierra Gold'</i>	Sierra Gold	1 Gallon
<i>Penstemon eatonii</i>	Firecracker Penstemon	1 Gallon

PRELIMINARY - NOT FOR CONSTRUCTION



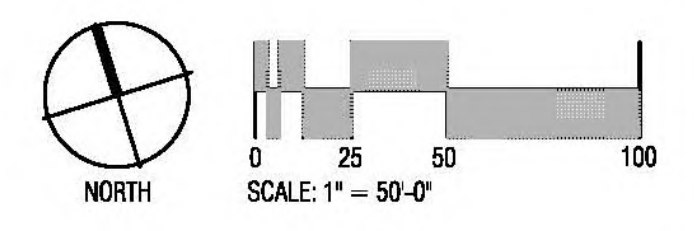
**WESTWORLD EQUIDOME / TONY NELSEN
EQUESTRIAN CENTER EXPANSION**
16601 N. PIMA RD.
SCOTTSDALE, AZ 85260

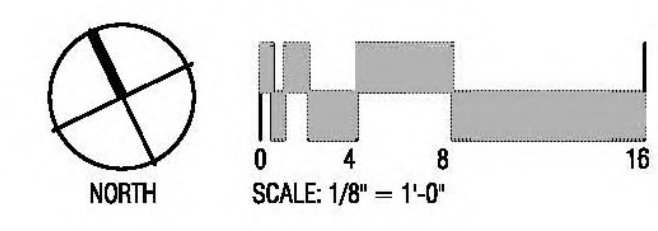
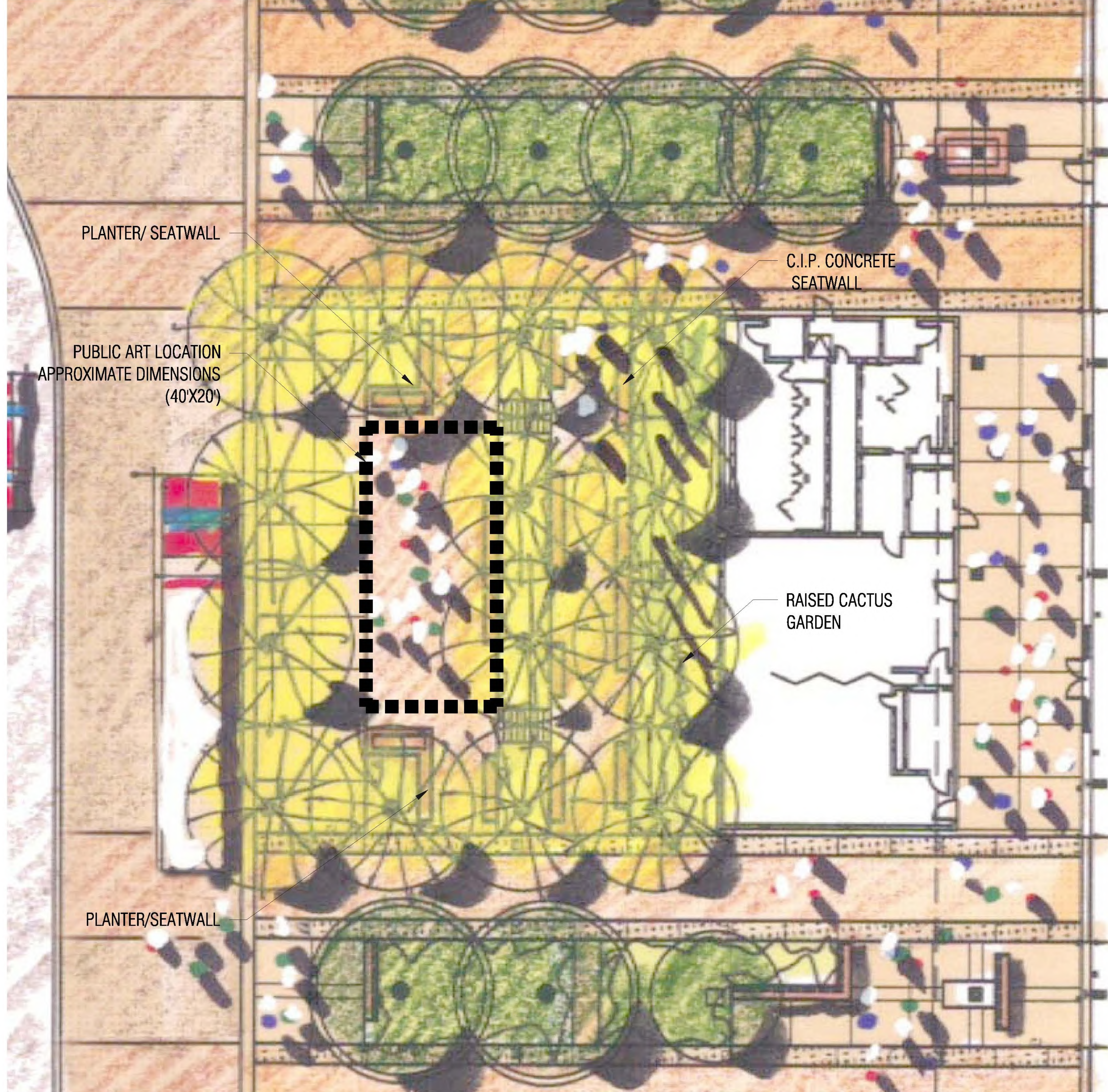


POPULOUS
FUCELLO ARCHITECTS

COS DRB NO.:
46-DR-2011 #2
May 14, 2012

**LANDSCAPE
CONCEPT
SITE PLAN
L02**





PRELIMINARY - NOT FOR CONSTRUCTION

POPULOUS[®]
 FUCELLO ARCHITECTS

structural engineering
 Jan Fjell
 HENDERSON
 ENGINEERS
 Emellus

COS DRB NO.:
 46-DR-2011 #2
 May 14, 2012

ENTRY GARDEN
 SEATING NODE
 ENLARGEMENT
L05

CITY OF SCOTTSDALE
 WESTWORLD

WESTWORLD EQUIDOME / TONY NELSEN
 EQUESTRIAN CENTER EXPANSION
 16601 N. PIMA RD.
 SCOTTSDALE, AZ 85260