

**Request for Qualifications (RFQ)**  
 Monroe Detention Center and Leinberger Memorial Center



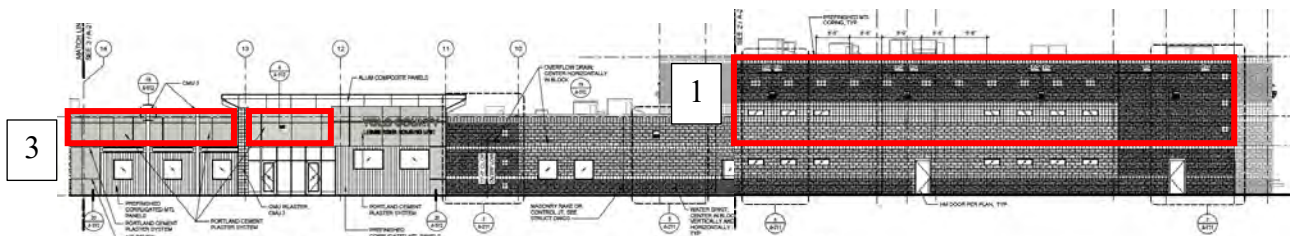
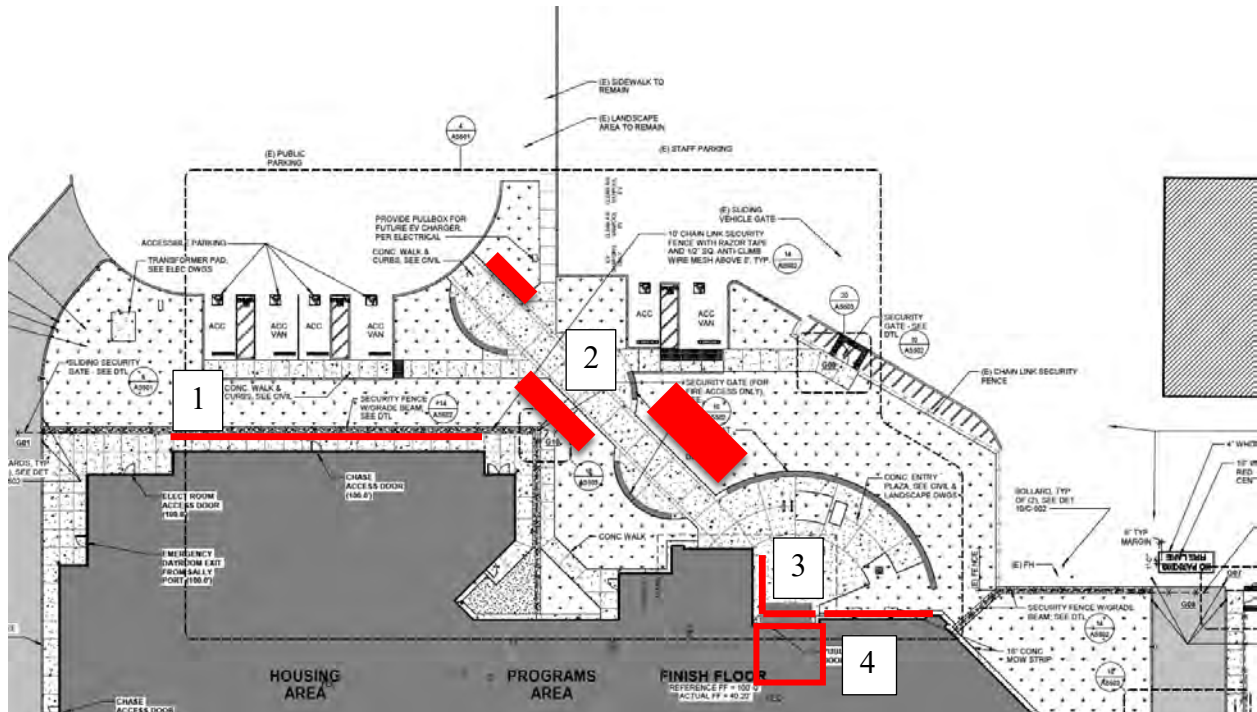
SITE 1: Leinberger Memorial Center

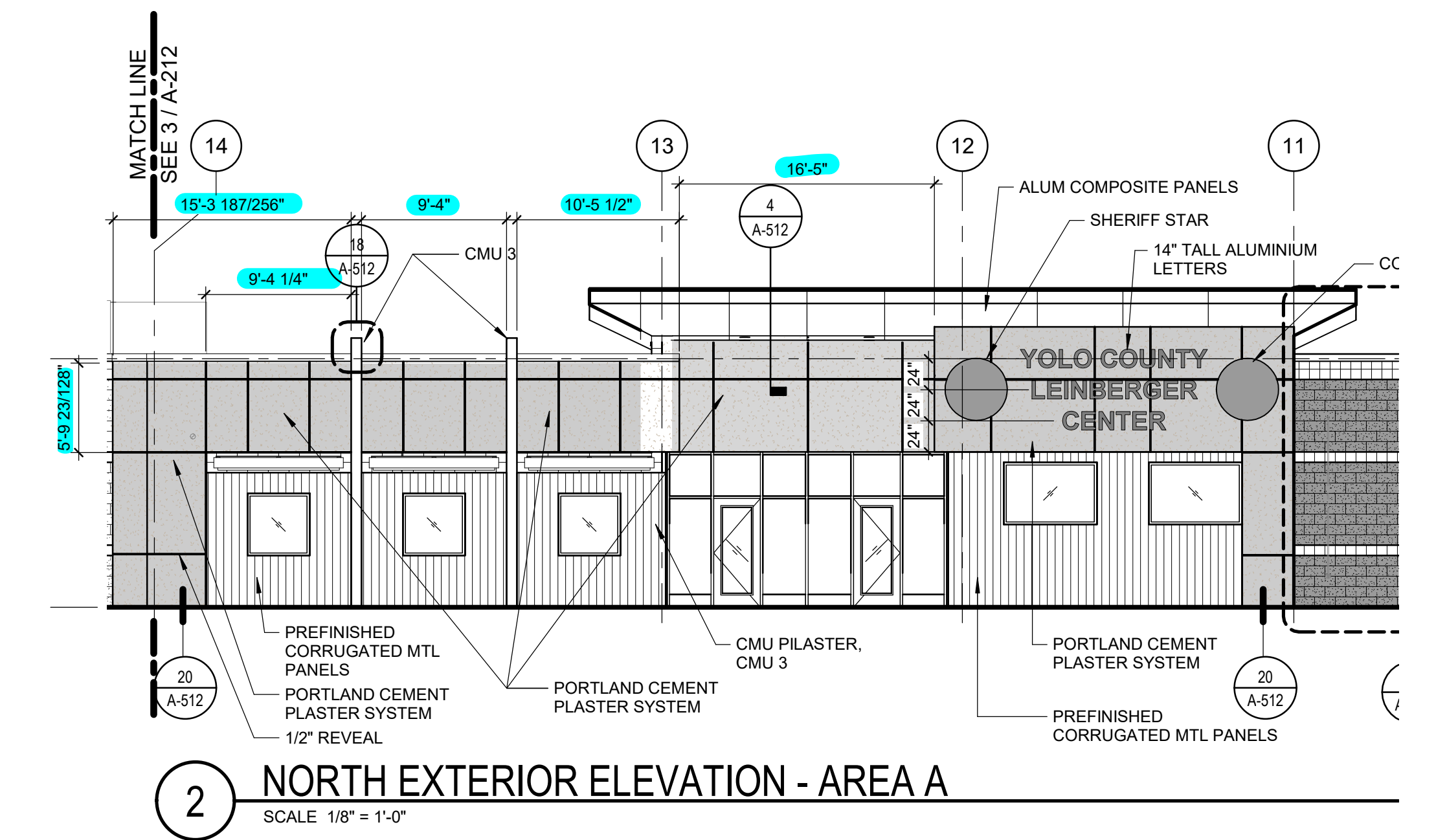
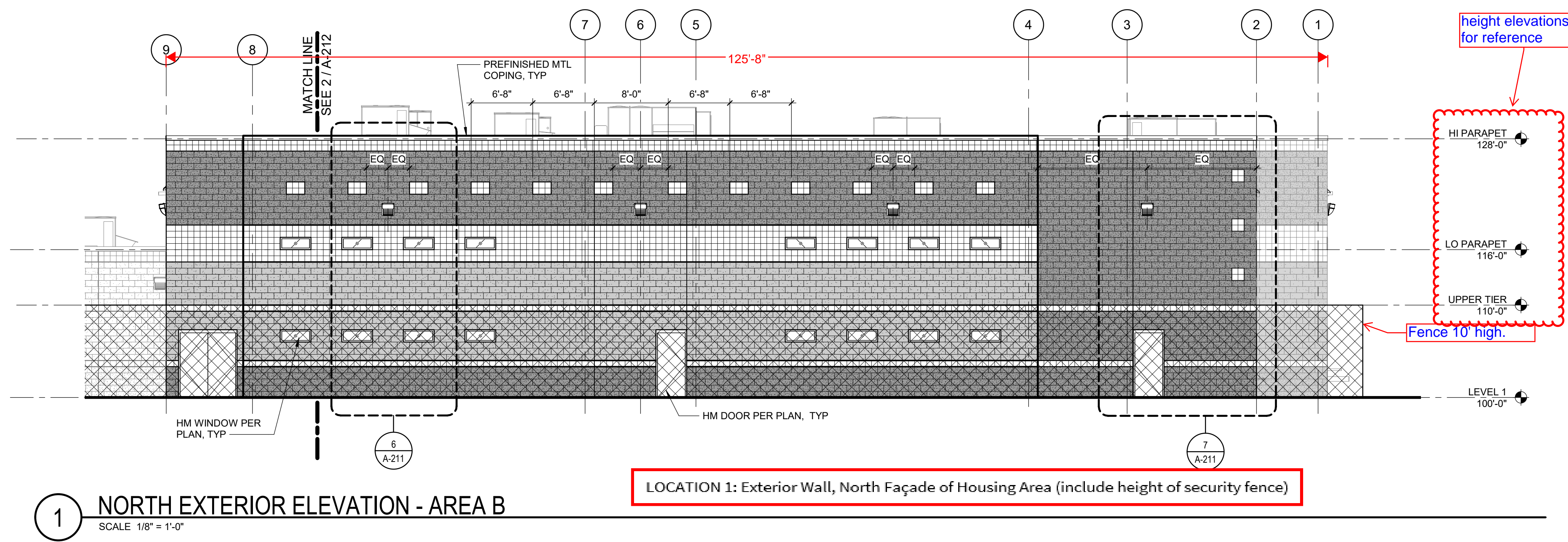
LOCATION 1: Exterior Wall, North Façade of Housing Area (facing public car access on Tony Diaz Dr.)

LOCATION 2: Exterior Landscape, Adjacent to walk and across from seat walls for public entrance

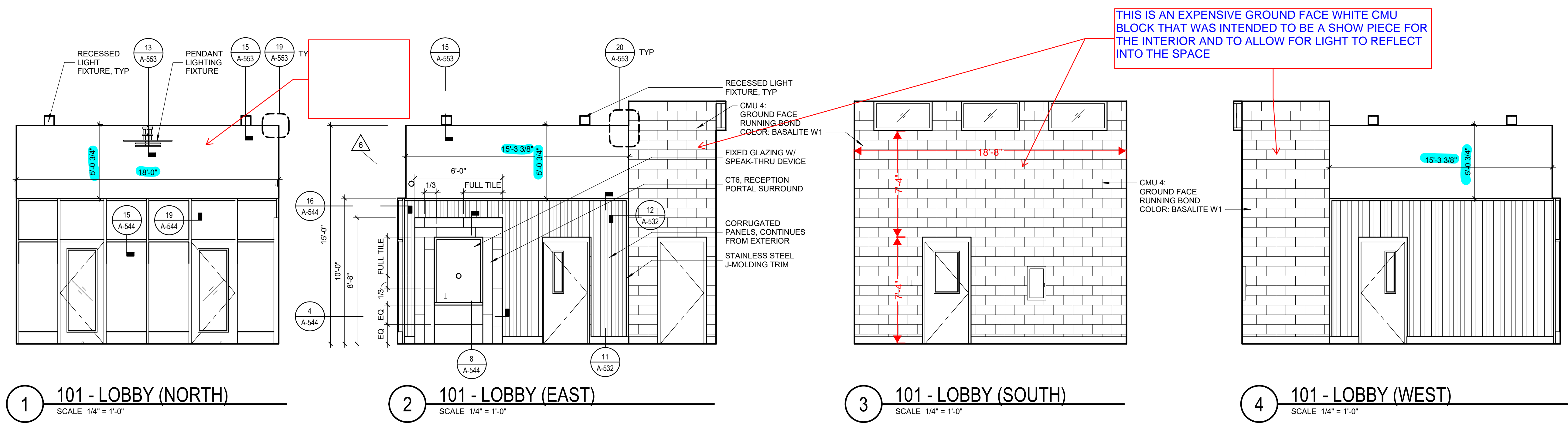
LOCATION 3: Exterior Wall, North and West Facing Façade of entrance

LOCATION 4: Interior Wall, North, East and West walls of lobby

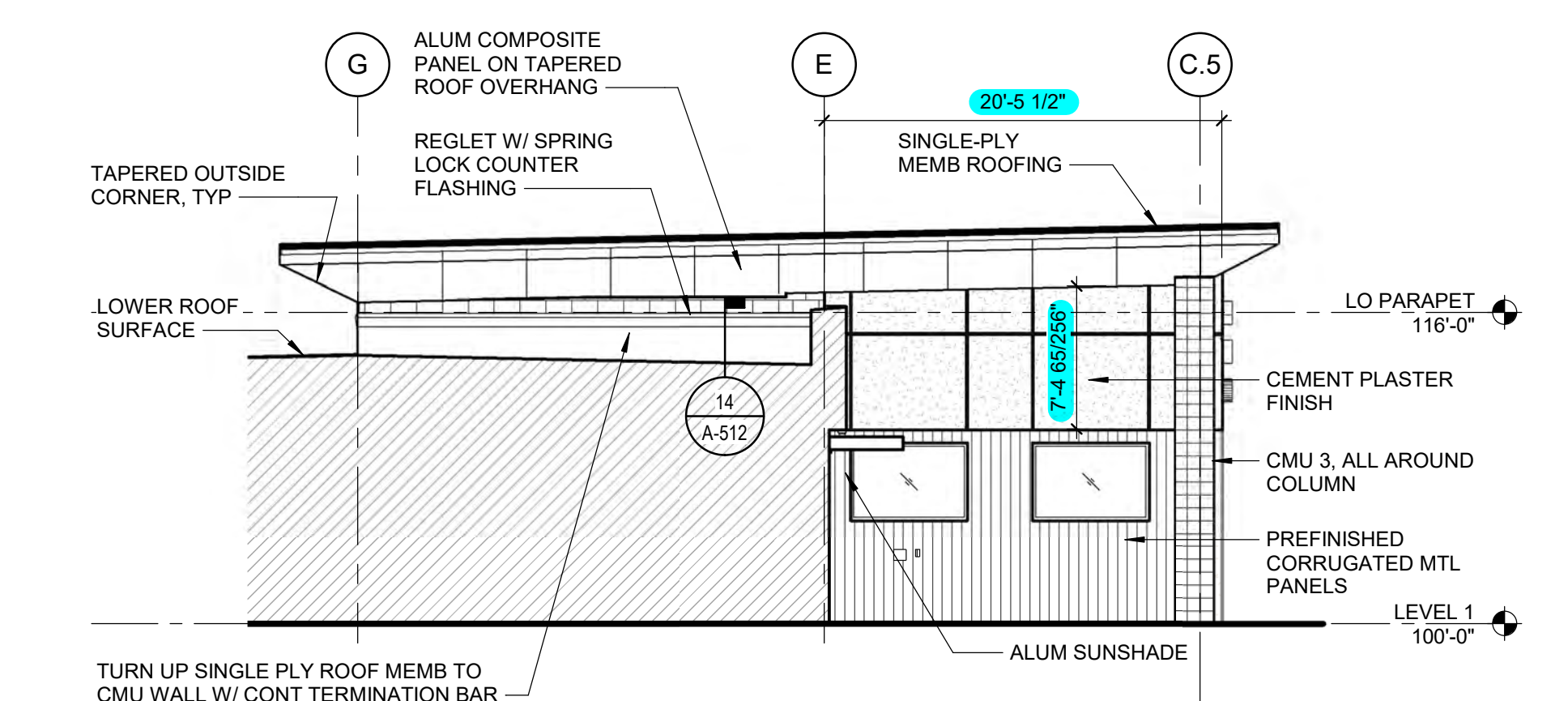




LOCATION 3: Exterior Wall, North and West Facing Façade of entrance

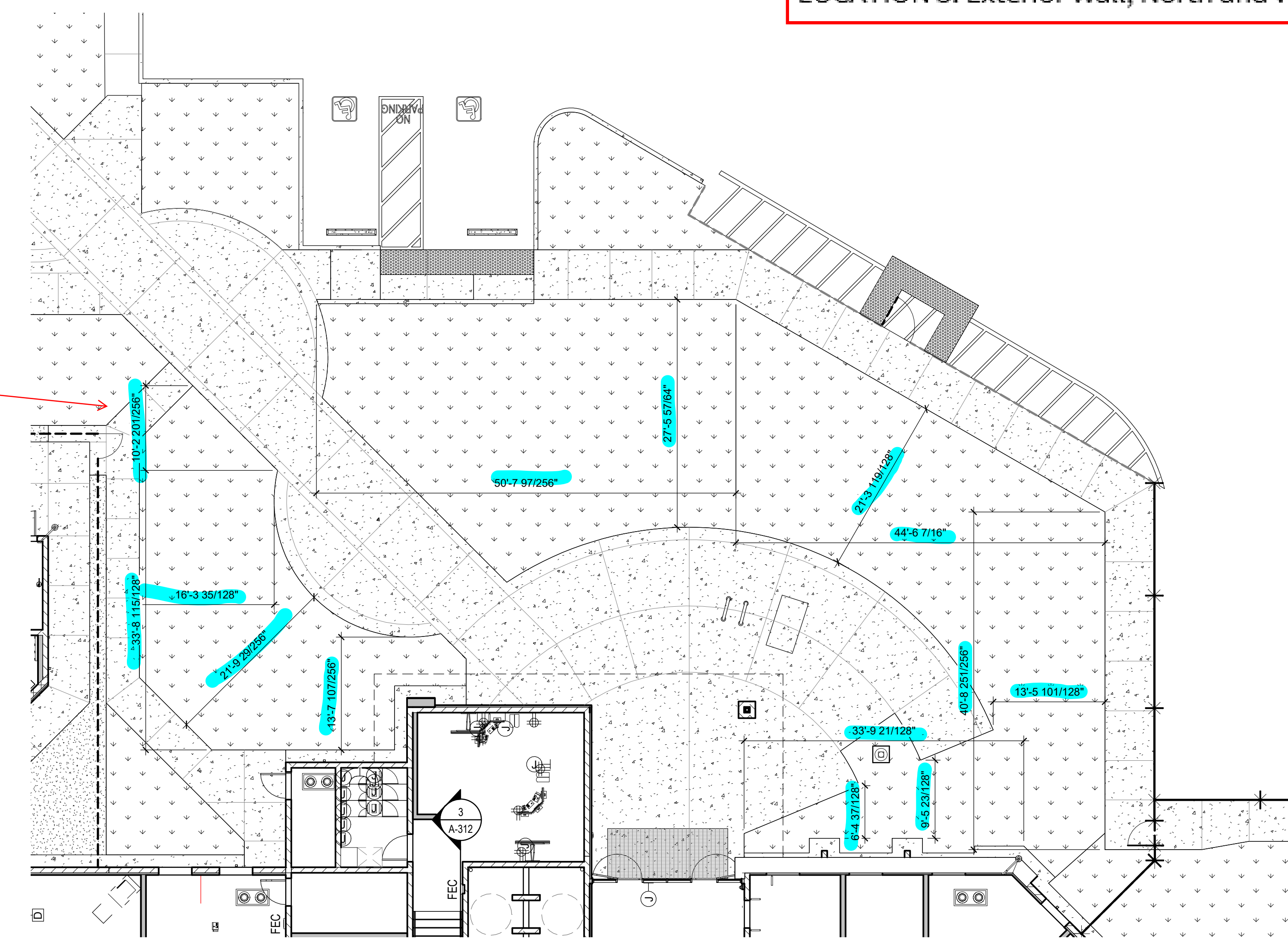


LOCATION 4: Interior Walls of Lobby



LOCATION 3: Exterior Wall, North and West Facing Façade of entrance

SCALE 1:10

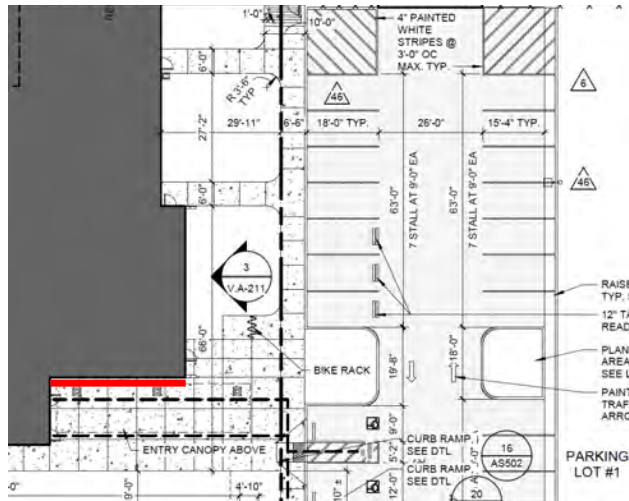
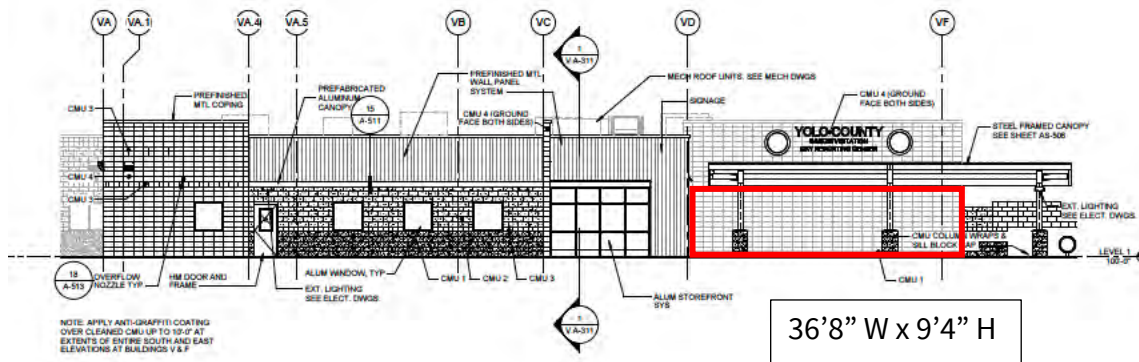


LOCATION 2: Exterior Landscape, Adjacent to walk and seat walls for public entrance

**Request for Qualifications (RFQ)**  
 Monroe Detention Center and Leinberger Memorial Center



**SITE 2: Monroe Detention Center Location Diagram**  
**LOCATION 1: Exterior Wall, North of Lobby Entrance (behind entry canopy)**





**SITE 2: Monroe Detention Center Location Diagram**  
**LOCATION 2: Interior Walls, West and East Lobby**

