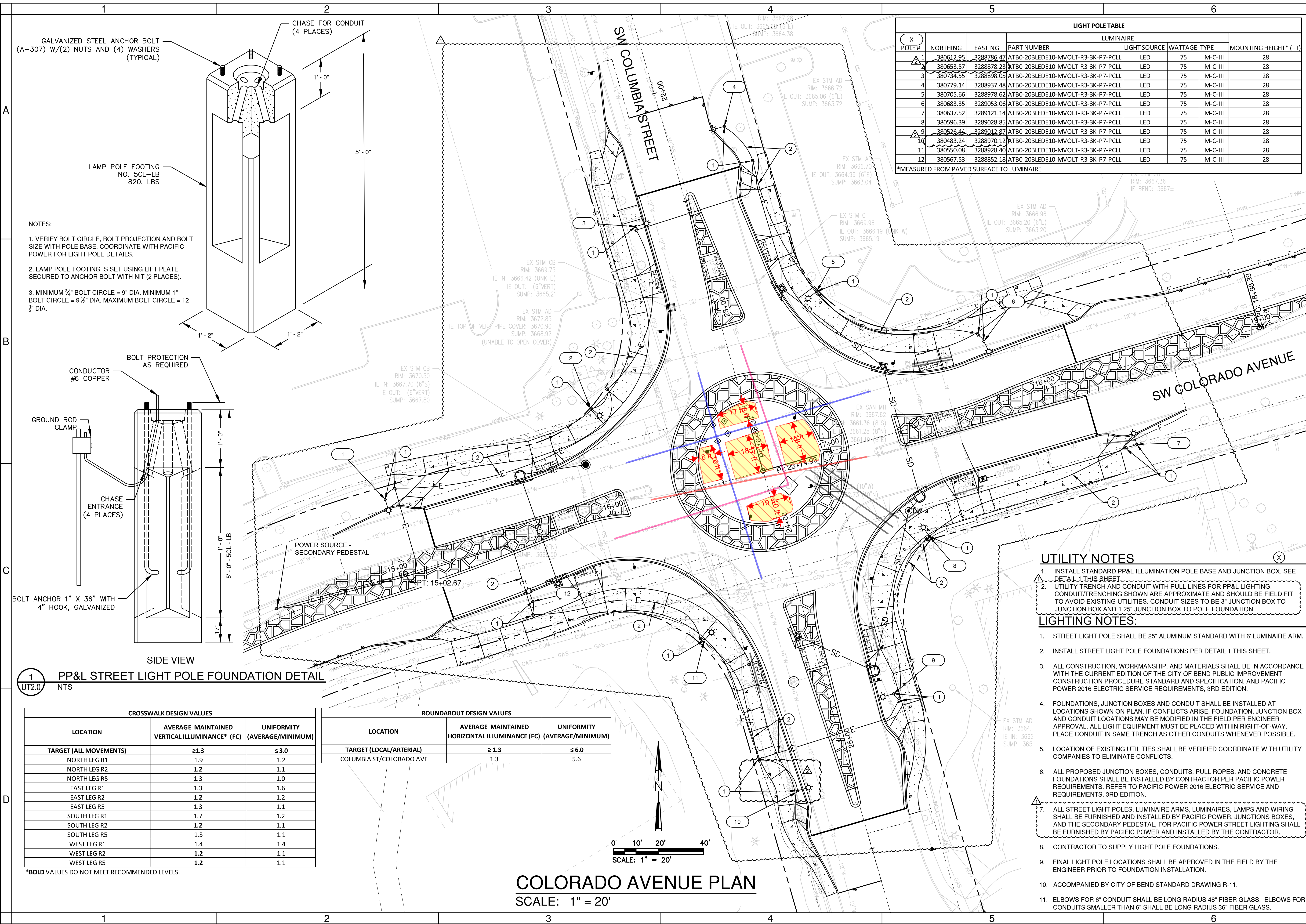
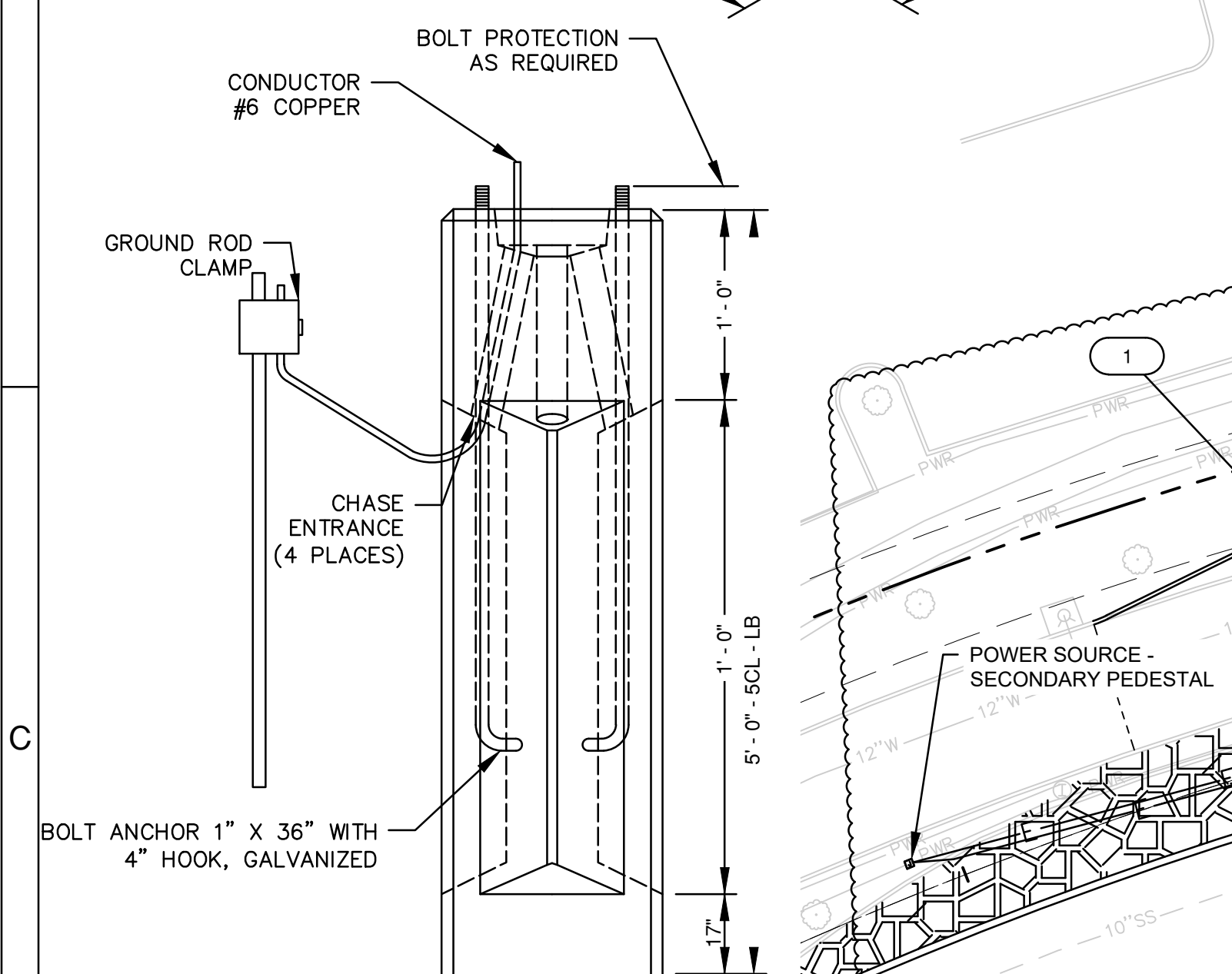
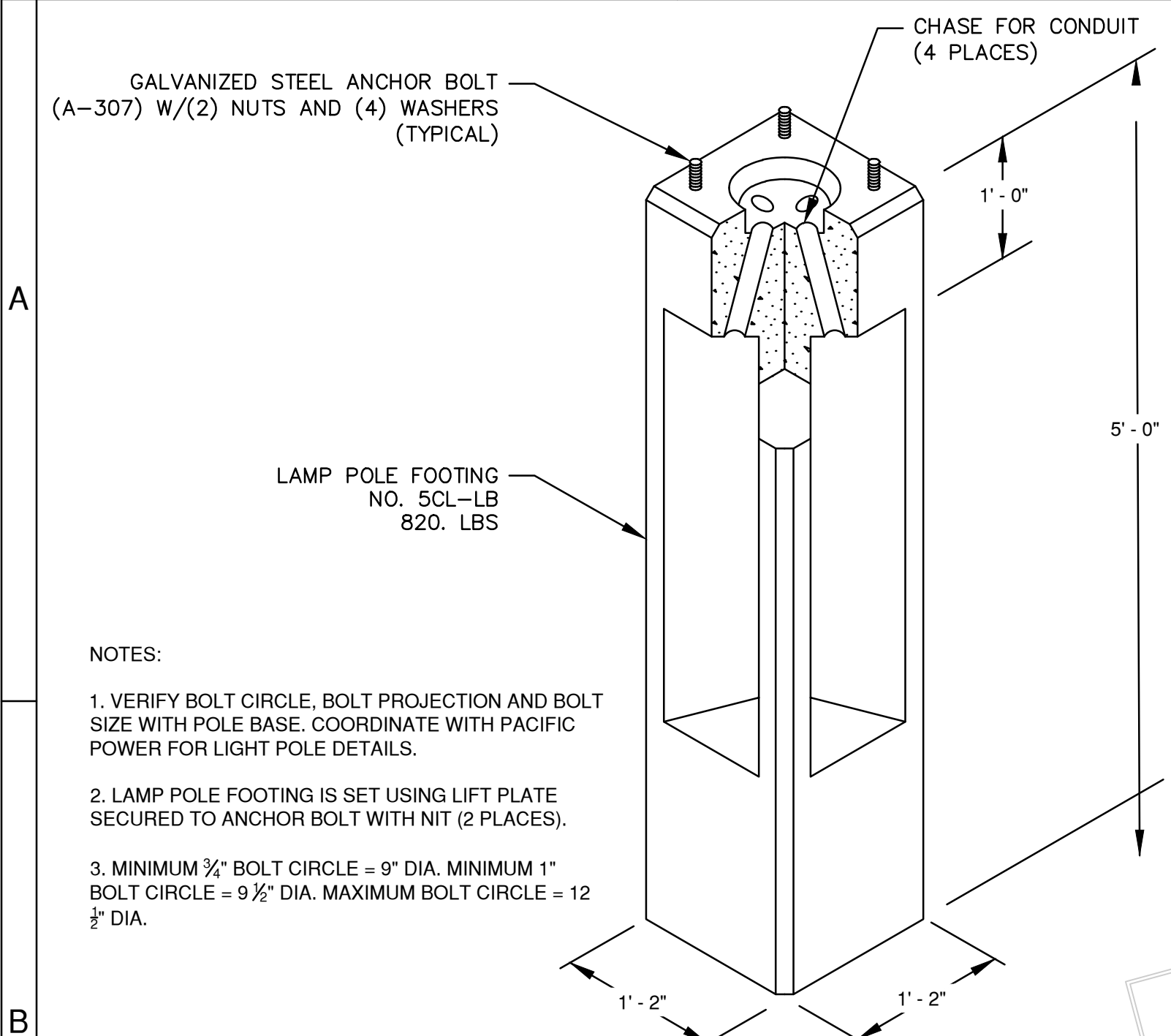


Q:\22\14644-01\65CAD\Civil\Colorado\SA18-RD-UT-14644.dwg PLOT DATE 2021-03-25 15:03 SAVED DATE 2021-03-25 11:16 USER: jamason



X POLE #	NORTHING	EASTING	LUMINAIRE				
			PART NUMBER	LIGHT SOURCE	WATTAGE	TYPE	MOUNTING HEIGHT* (FT)
1	380612.95	3288786.47	ATBO-20BLEDE10-MVOLT-R3-3K-P7-PCLL	LED	75	M-C-III	28
2	380653.57	3288878.23	ATBO-20BLEDE10-MVOLT-R3-3K-P7-PCLL	LED	75	M-C-III	28
3	380734.55	3288898.05	ATBO-20BLEDE10-MVOLT-R3-3K-P7-PCLL	LED	75	M-C-III	28
4	380779.14	3288937.48	ATBO-20BLEDE10-MVOLT-R3-3K-P7-PCLL	LED	75	M-C-III	28
5	380705.66	3288978.62	ATBO-20BLEDE10-MVOLT-R3-3K-P7-PCLL	LED	75	M-C-III	28
6	380683.35	3289053.06	ATBO-20BLEDE10-MVOLT-R3-3K-P7-PCLL	LED	75	M-C-III	28
7	380637.52	3289121.14	ATBO-20BLEDE10-MVOLT-R3-3K-P7-PCLL	LED	75	M-C-III	28
8	380596.39	3289028.85	ATBO-20BLEDE10-MVOLT-R3-3K-P7-PCLL	LED	75	M-C-III	28
9	380526.44	3289012.87	ATBO-20BLEDE10-MVOLT-R3-3K-P7-PCLL	LED	75	M-C-III	28
10	380483.24	3288970.12	ATBO-20BLEDE10-MVOLT-R3-3K-P7-PCLL	LED	75	M-C-III	28
11	380550.08	3288928.40	ATBO-20BLEDE10-MVOLT-R3-3K-P7-PCLL	LED	75	M-C-III	28
12	380567.53	3288852.18	ATBO-20BLEDE10-MVOLT-R3-3K-P7-PCLL	LED	75	M-C-III	28

*MEASURED FROM PAVED SURFACE TO LUMINAIRE



1 PP&L STREET LIGHT POLE FOUNDATION DETAIL
UT2.0 NTS

CROSSWALK DESIGN VALUES		
LOCATION	AVERAGE MAINTAINED VERTICAL ILLUMINANCE* (FC)	UNIFORMITY (AVERAGE/MINIMUM)
TARGET (ALL MOVEMENTS)	≥1.3	≤3.0
NORTH LEG R1	1.9	1.2
NORTH LEG R2	1.2	1.1
NORTH LEG R5	1.3	1.0
EAST LEG R1	1.3	1.6
EAST LEG R2	1.2	1.2
EAST LEG R5	1.3	1.1
SOUTH LEG R1	1.7	1.2
SOUTH LEG R2	1.2	1.1
SOUTH LEG R5	1.3	1.1
WEST LEG R1	1.4	1.4
WEST LEG R2	1.2	1.1
WEST LEG R5	1.2	1.1

*BOLD VALUES DO NOT MEET RECOMMENDED LEVELS.

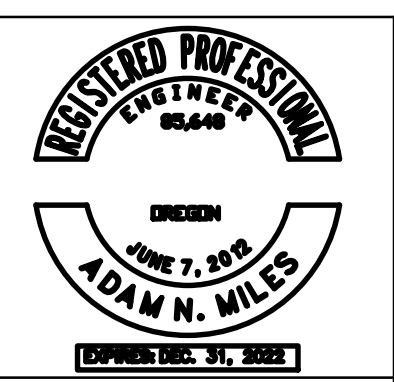
ROUNDBOUT DESIGN VALUES		
LOCATION	AVERAGE MAINTAINED HORIZONTAL ILLUMINANCE (FC)	UNIFORMITY (AVERAGE/MINIMUM)
TARGET (LOCAL/ARTERIAL)	≥1.3	≤6.0
COLUMBIA ST/COLORADO AVE	1.3	5.6

UTILITY NOTES

- INSTALL STANDARD PP&L ILLUMINATION POLE BASE AND JUNCTION BOX. SEE DETAIL 1 THIS SHEET.
- UTILITY TRENCH AND CONDUIT WITH PULL LINES FOR PP&L LIGHTING. CONDUIT/TRENCHING SHOWN ARE APPROXIMATE AND SHOULD BE FIELD FIT TO AVOID EXISTING UTILITIES. CONDUIT SIZES TO BE 3" JUNCTION BOX TO JUNCTION BOX AND 1.25" JUNCTION BOX TO POLE FOUNDATION.

LIGHTING NOTES:

- STREET LIGHT POLE SHALL BE 25" ALUMINUM STANDARD WITH 6' LUMINAIRE ARM.
- INSTALL STREET LIGHT POLE FOUNDATIONS PER DETAIL 1 THIS SHEET.
- ALL CONSTRUCTION, WORKMANSHIP, AND MATERIALS SHALL BE IN ACCORDANCE WITH THE CURRENT EDITION OF THE CITY OF BEND PUBLIC IMPROVEMENT CONSTRUCTION PROCEDURE STANDARD AND SPECIFICATION, AND PACIFIC POWER 2016 ELECTRIC SERVICE REQUIREMENTS, 3RD EDITION.
- FOUNDATIONS, JUNCTION BOXES AND CONDUIT SHALL BE INSTALLED AT LOCATIONS SHOWN ON PLAN. IF CONFLICTS ARISE, FOUNDATION, JUNCTION BOX AND CONDUIT LOCATIONS MAY BE MODIFIED IN THE FIELD PER ENGINEER APPROVAL. ALL LIGHT EQUIPMENT MUST BE PLACED WITHIN RIGHT-OF-WAY. PLACE CONDUIT IN SAME TRENCH AS OTHER CONDUITS WHENEVER POSSIBLE.
- LOCATION OF EXISTING UTILITIES SHALL BE VERIFIED COORDINATE WITH UTILITY COMPANIES TO ELIMINATE CONFLICTS.
- ALL PROPOSED JUNCTION BOXES, CONDUITS, PULL ROPES, AND CONCRETE FOUNDATIONS SHALL BE INSTALLED BY CONTRACTOR PER PACIFIC POWER REQUIREMENTS. REFER TO PACIFIC POWER 2016 ELECTRIC SERVICE AND REQUIREMENTS, 3RD EDITION.
- ALL STREET LIGHT POLES, LUMINAIRE ARMS, LUMINAIRES, LAMPS AND WIRING SHALL BE FURNISHED AND INSTALLED BY PACIFIC POWER. JUNCTION BOXES, AND THE SECONDARY PEDESTAL, FOR PACIFIC POWER STREET LIGHTING SHALL BE FURNISHED BY PACIFIC POWER AND INSTALLED BY THE CONTRACTOR.
- CONTRACTOR TO SUPPLY LIGHT POLE FOUNDATIONS.
- FINAL LIGHT POLE LOCATIONS SHALL BE APPROVED IN THE FIELD BY THE ENGINEER PRIOR TO FOUNDATION INSTALLATION.
- ACCOMPANIED BY CITY OF BEND STANDARD DRAWING R-11.
- ELBOWS FOR 6" CONDUIT SHALL BE LONG RADIUS 48" FIBER GLASS. ELBOWS FOR CONDUITS SMALLER THAN 6" SHALL BE LONG RADIUS 36" FIBER GLASS.

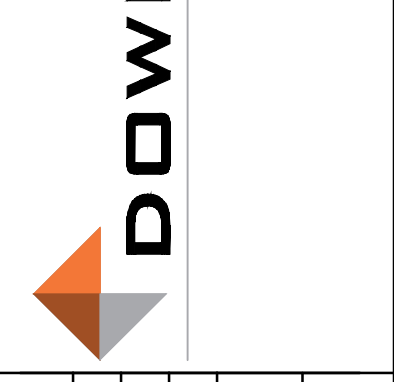


COLUMBIA ROUNDABOUT IMPROVEMENTS
ILLUMINATION PLAN
1TCSR
DESCHUTES COUNTY, OREGON



REVISIONS:
1. CONDUIT ROUTING AND SIZING REVISION: 3/10/2021
2. POLE ID RELOCATION SW ADJUST: 3/25/2021
3.

DESIGNED BY: JIMP
DRAWN BY: JIMP
SCALE: AS SHOWN
FILE: SA18-RO-UT-14644.dwg
DATE: 02/18/2021



963 SW Simpson, #200
Bend, Oregon 97702
541-385-4772

VERIFY SCALES
0 1"
BAR EQUALS ONE INCH ON ORIGINAL DRAWING

SHEET:
UT2.0
COB# 1TCSR