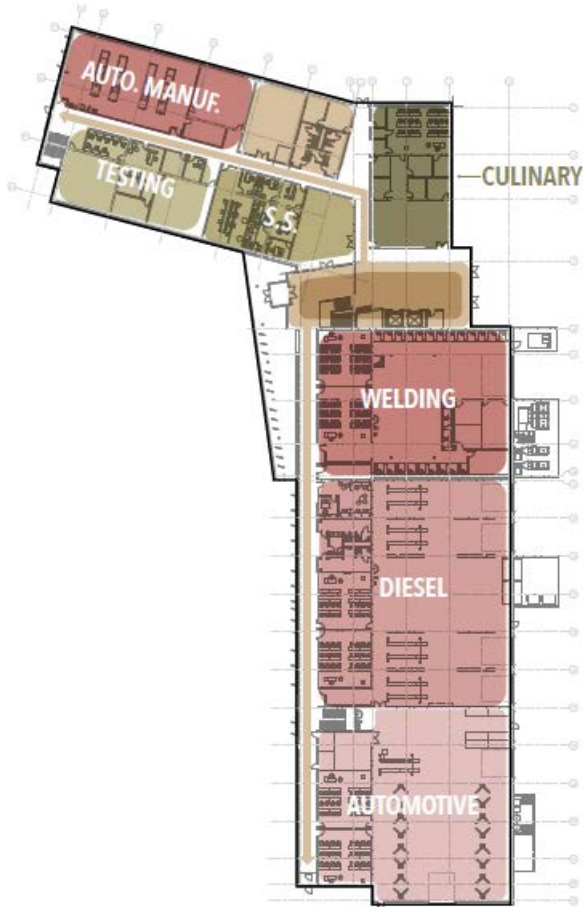
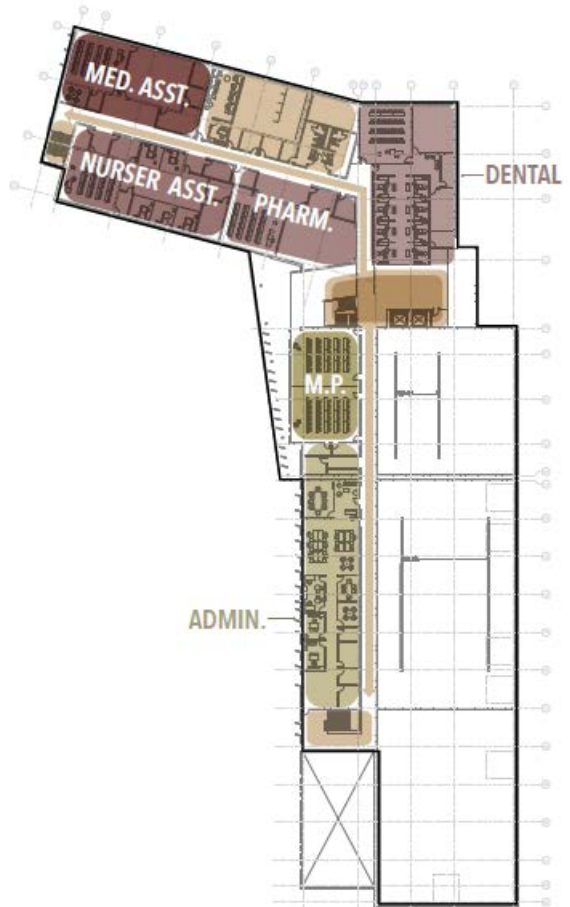


**MASTERPLAN LEGEND**

- A** **PAYSON BUILDING**
  - NURSE ASSISTANT
  - MEDICAL ASSISTANT
  - PHARMACY TECH
  - CULINARY ARTS
  - AUTOMATED MANUF.
  - AUTOMOTIVE TECH.
  - DIESEL TECH.
  - WELDING
- B** **PARKING**  
+/- 250 STALL
- C** **STUDENT PLAZA**
- D** **LOADING DOCK**
- E** **SERVICE YARD**
- F** **RETENTION POND**
- G** **FUTURE EXPANSION**



LEVEL 01



LEVEL 02



**Utah Arts & Museums Public Art Program  
Requests Utah Artist's Qualifications  
for the  
Mountainland Technical College Payson Campus**



**Request for qualifications from Utah artists and/or artist teams interested in creating site specific artwork(s) for the new Mountainland Technical College Campus in Payson, Utah.**

**DEADLINE FOR MATERIALS: FEBRUARY 10, 2023**

**MOUNTAINLAND TECHNICAL COLLEGE**

The mission of the Mountainland Technical College (MTECH) is to enhance the employability of individuals through market-driven career and technical education. It provides classroom and hands-on training in a number of technical professions. This training is specific to the practical problem-solving skills needed for a career in a blossoming economy.



## HISTORY OF MOUNTAINLAND TECHNICAL COLLEGE

Mountainland Technical College (MTECH) was originally established as Mountainland Applied Technology Center in 1989. In 2001 through state legislation, the College officially became Mountainland Applied Technology College and an affiliate campus of the Utah College of Applied Technology (UCAT). In June 2006 MTECH was awarded full accreditation and in 2017 became Mountainland Technical College. MTECH offers programs in over 50 career and technical education fields with over 1.5 million student membership hours.



## PAYSON CAMPUS

Mountainland Technical College enters the 2022/2023 school year as the largest and fastest-growing technical college in Utah. MTECH's enrollment growth is only eclipsed by the regional demand for competency-based education, occupational certificates, and a skilled workforce. Over 10 years, 20 sectors in the Payson region are forecast to have double-digit employment growth (JobsEQ, September 2021). To meet business, industry, and workforce training demands, MTECH must expand.

The vision of the new Payson Campus for MTECH is to have a location that fulfills the growing demands for technical training and education in southern Utah county. The proposed campus should be a place of pride for the students and faculty to come each day to learn and teach; the atmosphere should be approachable, open, and clean. Overall, MTECH's new campus should represent a modern higher educational facility focused on practical, hands-on learning.

## PAYSON, UTAH

Payson is located 59 miles south of Salt Lake City, Utah. It sits in the southern Wasatch Range, right below the 11,928-foot peak of Mount Nebo. The Payson area has long been home to the Ute, Shoshone, Paiute, and Goshute peoples.



The area of Payson was settled by pioneers in 1850, under the name Peteetneet Creek, named after Chief Peteetneet of the Timpanogos people. Originally functioning primarily as an agricultural outpost, its population has consistently grown, reaching about 20,000 in the most recent census, with a diverse blend of residential, agricultural, and business communities. It is on the southern end of Utah county, the fastest growing county in the state.



2022 Artwork at MTECH Trades & Technology Building:  
Scott Olson, *Veni Didici Vici*

## COMMITTEE STATEMENT

This facility will be a place where community members can take advantage of the training programs to provide a better quality of life, to further their career development, and to develop a love of lifelong learning. MTECH takes great pride in serving both high school and adult learners - and the faculty, administration, and board have a common goal of enriching the student through quality education. The Art Selection Committee encourages artists to consider the students

and faculty spending time in the new Payson facility and create an exterior work that reflects this diverse audience. In the development of work for this project, artists may consider the full suite of training offered at the new, comprehensive MTECH Campus (e.g., Apprenticeship, Health, Technology, Service, and Trades programs).

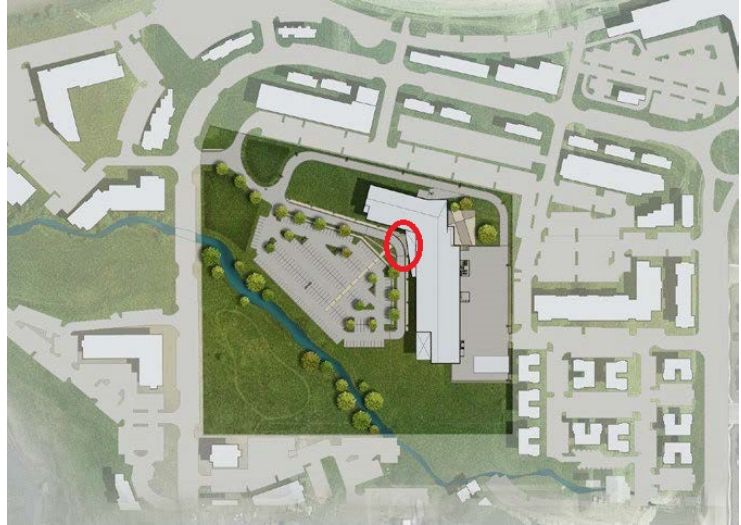
The Art Selection Committee is seeking current Utah residents or artists with rich connections to Utah. In addition, the Committee hopes to find an artist who is punctual, responsive, and reflects the College's perspective and its students. The goal of this artwork is to serve as an exterior beacon for the new facility, welcoming visitors as they approach the west entrance.

## BUDGET

**\$166,000** is available for all related expenses of this Public Art commission(s) including (but not limited to) artist fees, fabrication, insurance, shipping, travel, installation, documentation, etc.

## ELIGIBILITY

Artist / artist teams living in the state of Utah or with connections to Utah are eligible for this commission. Applicants must have a U.S. Tax ID Number (SSN, EIN, ITIN, or other). Art selection committee members and immediate families, board members, and employees of Method Studio or Utah Division of Arts and Museums are not eligible for this project.



## SUBMISSION INSTRUCTIONS AND REQUIRED MATERIALS

Interested artists may submit applications online via [CallForEntry.org](http://CallForEntry.org). Register at [www.callforentry.org](http://www.callforentry.org) and follow the directions for registration and submitting material for this Public Art Request for Qualifications.

The application process will prompt you for all necessary documents and information. This includes up to 10 images and/or up to 1 movie file of previous work, a CV or resume, and a Statement of Interest explaining your interest in the project and how your work might relate to the project.

To request an accommodation for a disability, please complete an Accommodation Form at least two weeks in advance of the February 10 deadline. Accommodation forms can be found at <https://artsandmuseums.utah.gov/accessibility>

Utah Arts & Museums will not be responsible for applications delayed or lost in transit. While all reasonable care will be taken, neither the Utah Division of Arts & Museums nor the MTECH Payson Art Selection Committee will be liable for late, lost, or damaged materials or electronic files. Faxed or e-mailed applications cannot be accepted.

## DEADLINE

**Complete application packages must be RECEIVED on or before February 10, 2023 by 11:59p.m. MT (THIS IS NOT A POSTMARK DEADLINE)**



## SELECTION PROCESS AND SCHEDULE

The Selection Committee will review all properly submitted qualifications from which a short list of semi-finalists will be selected. Semi-finalists will be asked present a full proposal to the committee on **April 18, 2023** to include concept, budget, and timeline. All semi-finalists will be awarded an honorarium to help defray the costs of the development of the proposal. The honorarium will be applied toward the commission amount for the artist(s) awarded the commission(s.) Utah Arts & Museums will not be responsible for applications delayed or lost. The MTECH Payson Art Selection Committee reserves the right to withhold the award of a commission or re-release the call for entries.

### Schedule:

December 8, 2022 – Publish RFQ

February 10, 2023, 11:59pm MT – Deadline for receipt of preliminary materials

February 21, 2023 – Committee Review

April 18, 2023 – Finalists interviews and presentations

Fall 2024 – Project substantial completion



## ARTIST SELECTION COMMITTEE

Clay Christensen*	President, Mountainland Technical College
Joseph Demma	VP College Relations, Mountainland Technical College
Brad DeMond	Project Manager, Div. of Facilities Construction Management
Heather Graham	President, Payson Arts Council
Joshua Greene	Principal, Method Studio
Blake Hendry*	Facilities Director, Mountainland Technical College
Rafael Lopez*	Method Studio
Kirt Michaelis	VP Administrative Services, Mountainland Technical College
Holly Peterson*	VP Instruction, Mountainland Technical College
Jonah Ritter*	Method Studio
Matt Wallace*	Method Studio
Bill Wright	Mayor, Payson City

\* = non-voting committee member

If you have any questions about this or other projects information is available at: [publicart.utah.gov](http://publicart.utah.gov)  
Or contact: Hannah Barrett at [hbarrett@utah.gov](mailto:hbarrett@utah.gov)

Images courtesy Method Studio