

Visual Arts Week Cultural Currents

Art Installations: Artwork Zones

I. Exterior Sculptures

Two sculptural works will be installed on two separate 4'x 4' plinths, which are approximately 20 feet apart at the North entrance to the Hult Center near the Eugene Japanese American Memorial along 6th Avenue in Downtown Eugene.

Figure 1.1 Hult Center Entrance on 6th Avenue. [Map Link](#)



Figure 1.2 Two 4'x4' plinths



II. Pole Banners Visual Art Series

76 double-sided banners, 18x36 inches each, will be installed on 38 lamp poles. The Pole Banners are along the Downtown Riverfront Park path that begins near the SubSupra pavilion, east to the river overlook. A Cultural Currents digital projection on display at night will be adjacent to the banner artwork at the SubSupra Pavilion.

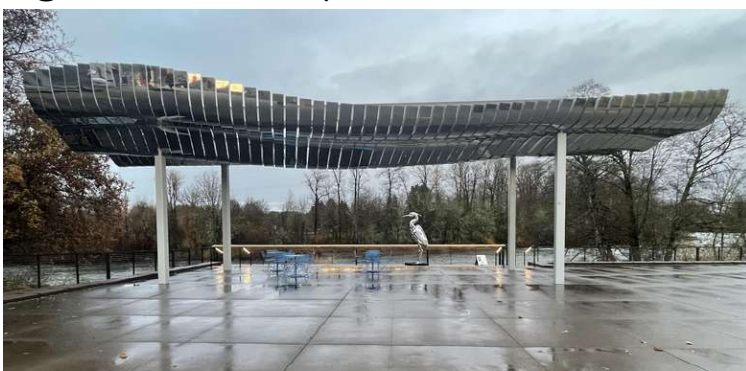
Figure 2.1 Banner Installation



Figure 2.2 Location of Banners. [Map Link](#)



Figure 2.3 SubSupra Pavilion near Banners



III. Farmers Market Interior Wall 2-Dimensional Artwork

The artwork zone is roughly 10 x 20 feet on the South wall inside the Farmer's Market Pavilion and installed above eye level. Highly detailed artwork may not be appreciated at the height it will be installed. For a sense of scale, current artwork, Big One by Erin Langley, featured in this location is 73" x 60". The selected artwork will rotate into this artwork zone. The artwork will be adjacent to a permanent Percent for Art commission titled [Willamette River Contours by Michael Boonstra](#).

Figure 3.1 South Wall Artwork Zone. [Map Link](#)



IV. Spoken Word, Music and/or Sound Artworks

Audio artworks will be installed in the following locations:

1. Alley from Willamette to Park Street Blocks
 - Audio installation (1 work)
2. Farmer's Market Pavilion
 - Audio installations (2 works) *Note: A Cultural Currents digital projection will be on display at night at the Farmers Market adjacent to this work.*

Figure 4.1 Alley from Willamette to Park Street Blocks

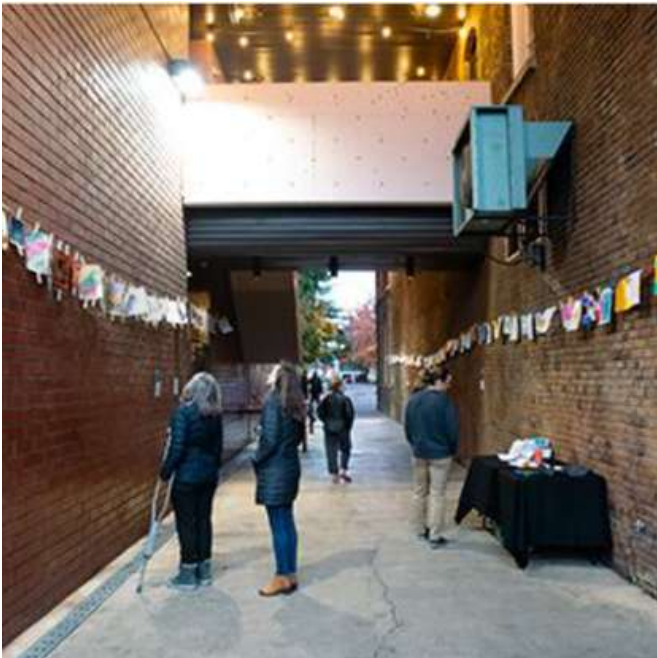


Figure 4.2 Farmer's Market Pavilion



V. Projections

Audio artworks will be installed in the following locations:

1. SubSupra Pavilion

- Projection installation with optional audio (1 work). *Note: A Cultural Currents banner art installation will be on display on light posts along the path adjacent to this projection installation.*

2. Farmer's Market Pavilion

- Projection installations (2 works)

Figure 5.1 Eugene Downtown Riverfront Park SubSupra Pavilion (reflective stainless steel structure). [Map Link](#)



Figure 5.2 SubSupra with Projection Solution




Figure 5.3 Projection Locations at the Farmers Market Pavilion. One bay door will be identified for the final projection location. [Map Link](#)



Figure 5.4 Farmers Market Pavilion Projection Solution

Rollup Window-to-Screen Conversion
Strategic use of pavilion architecture to easily convert rollup doors into video screens



Finished Screen Dimensions:
11' 5" Wide x 6'5" Tall (equivalent to 157" television)

Rear Projection Solution:
With projectors indoors, protection from weather, tampering/vandalism while audiences are outdoors

Screens based on stretch fabric:
utilize pre-existing openings, connecting to door hardware and blackout fabric band at bottom (covers scaloping of screen at bottom)

Photography, Video, Visual Art
Multiple formats can be displayed