

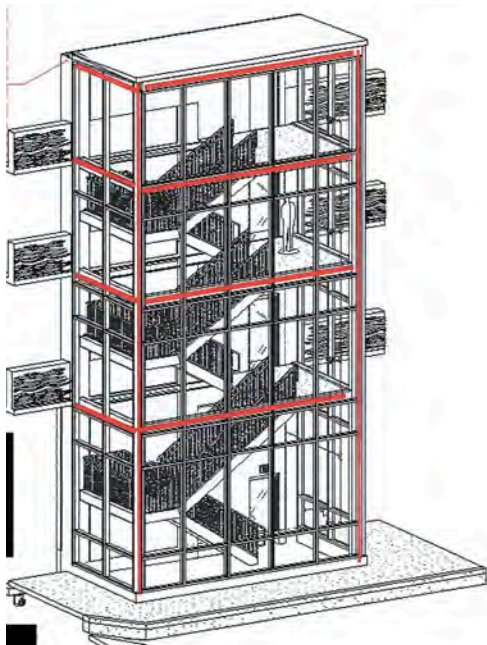
## Transit Center and Parking Garage Frankfort KY



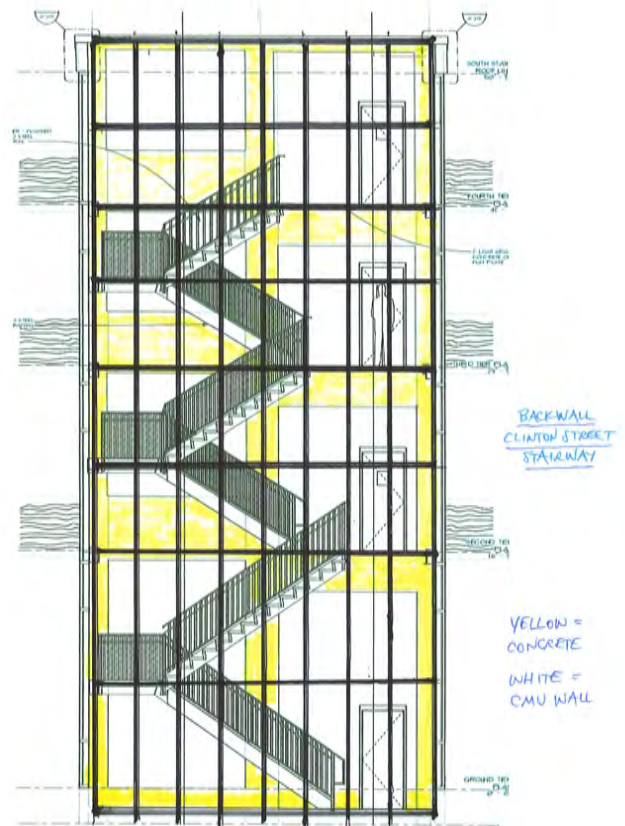
Left: Pink rectangle shows location of new transit center and parking garage in Frankfort. The red star depicts the stairwell that will host the mosaic/mural installation.



Left: Rendering of the south facade of new transit center and parking garage. The stairwell glass will be clear in final construction. The parking garage exterior walls on this side will have an embedded design resembling the flow of water.



Above: Rendering showing the clear glass walls framing the stairwell interior.



Above: The back wall is comprised of a mix of concrete and CMU (concrete masonry unit). The interior is approx 50' tall x 24' wide. The doors at each level are 3' x 7'. The stairs and handrails will not be attached to the back wall, but will be within 1-2 inches.