

HOWARD COUNTY COVID-19 MEMORIAL
HOWARD COUNTY, MARYLAND
CALL TO ARTISTS REQUEST FOR EXPRESSIONS OF INTEREST

No. EOI-02-2024

Issued: April 5, 2024

Application Deadline: **May 29, 2024**

Contact: **Howard County Office of Procurement
and Contract Administration**
Jennie Rittenhouse, CPPB
Deputy Procurement Administrator
jrittenhouse@howardcountymd.gov
Phone: (410) 313-6378

Project Title: **Howard County COVID-19 Memorial Sculpture
Howard County, MD**

Apply online: CaFÉ: www.callforentry.org

Howard County History:

Howard County officially became the 21st of Maryland's 23 counties in 1851. It was named in honor of John Eager Howard, statesman, soldier and fifth governor of Maryland. Howard County was mainly farming and hunting grounds for the Native Americans until 1687 when Adam Shipley was granted property on the Patapsco River from Lord Baltimore and started the farming tradition. The County's history included the Carroll family, signers of the Declaration of Independence and one of America's wealthiest families, and the Ellicott brothers who established a flour mill on the Patapsco River and went on to create the largest pig iron foundry on the east coast, and Ellicott Mills, one of the greatest milling and manufacturing towns in the east at that time. They built roads, bridges, a wharf in Baltimore, schools, the first railroad terminal on the B & O railroad and the first part of the National Road that was later to become America's first interstate highway.

The county was predominately agricultural in character until 1966, when construction began on the new town of Columbia, which was planned and developed by the Rouse Company, led by its founder James Rouse. Beginning with an idea and the purchase of 14,000 acres in the mid-1960's, Columbia reached its original population projection of 100,000 residents by 2015 and has met or exceeded the goals put forth in its original proposal and advertising.

The county is ideally located midway between Baltimore and Washington, DC and has grown substantially in population to over 325,000 today. It is known for the best schools in Maryland and is now one of the top 10 wealthiest counties in the nation. Under a home rule charter since 1968, Howard County is governed by an elected County Executive and a five-member County Council.

Project Background:

The County decided in 2021 to create a memorial to honor the front-line and emergency personnel that did so much to help get our community through the COVID-19 pandemic, as well as remember those who were lost to COVID-19 during the pandemic. It was decided to create a grove of trees as a setting for a sculpture, as well as a seating area with a reflecting water fountain to provide a bright and vibrant, but also quiet and serene location for reflection and remembrance.

The included plans and digitally rendered images show the schematic design for the seating area and setting for the sculpture.

Artwork Intent and Goals:

Intent

This Call for Entries solicitation seeks to commission a sculpture of redeeming quality that will embody the purpose of remembrance and gratitude of the memorial through the selection of a qualified artist that can creatively, and thoughtfully, design within the context of this project.

Goals

The design and creation of Artworks **must** include the following attributes:

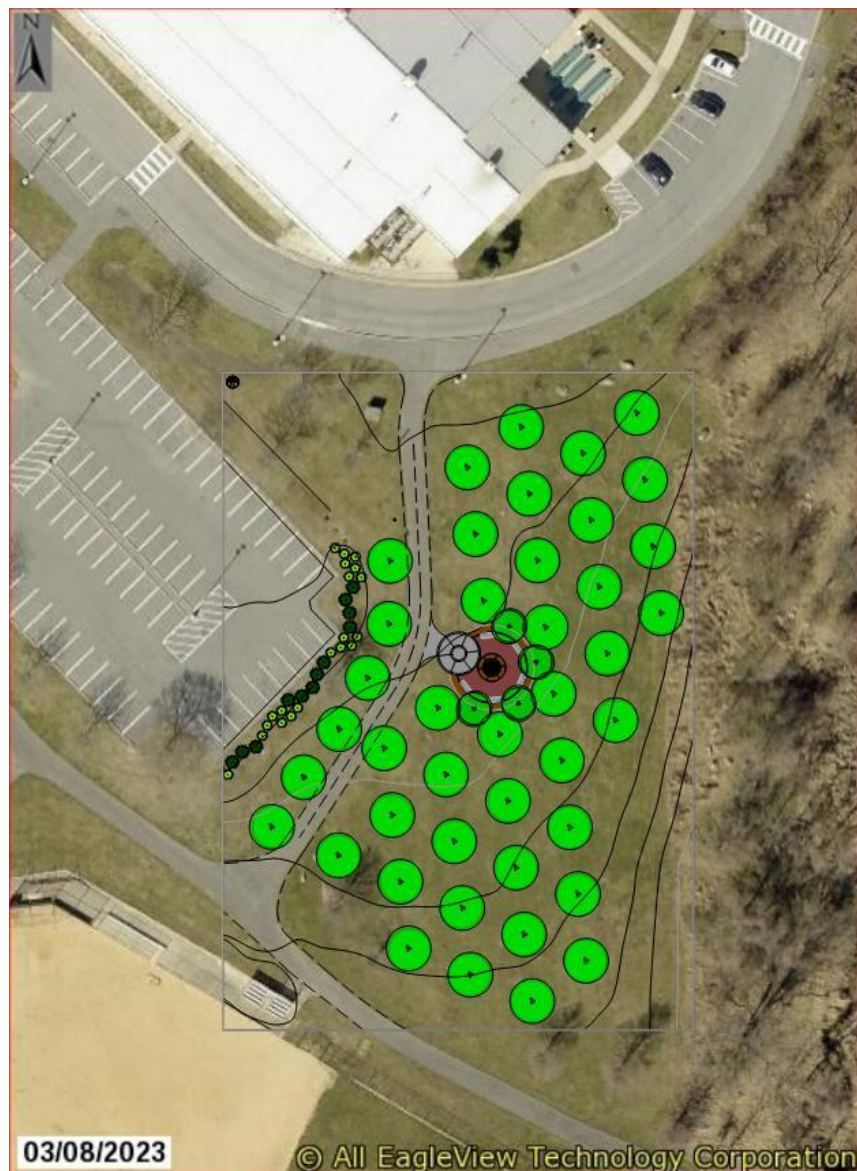
- a. Reflect and enhance the serene setting of the memorial and support the vision of the memorial as a place of reflection for visitors; and
- b. fit well within the site's context and
- c. be designed and constructed of durable, easily maintained materials and be vandal resistant.

Howard County is committed to the stewardship of our environment, and the selected sculpture should demonstrate a commitment to responsible fabrication and resourcing, and passive or low-energy use. The sculpture should be effectively integrated into the environment and consider viewing from multiple vantage points and elevations. The selected sculpture will invite people to reflect on how the Covid-19 pandemic affected everyone in Howard County as well as worldwide and remind them of all the hard work done by so many to bring the County through the pandemic.

The anticipated duration of the sculpture project is 12 months, with two months for design development and finalizing the design plans and 10 months for fabrication, delivery and installation.

Proposed Artwork Location/Setting:

The proposed sculpture will be located at Meadowbrook Park, sited on a low concrete base along a pathway that travels through the grove of birch trees. The specific proposed location is as shown below.









The concrete base, surrounding walkways, fountain and landscaping will be constructed and planted prior to the statue being installed.

The concrete base will be circular and 6'-0" in diameter; the top of the concrete base will sit approximately 8 inches above the surrounding walkway. The sculpture must fit within the limits of the concrete base to provide safe pedestrian access around the sculpture. No part of the sculpture may extend past the edge of the concrete base unless it is at least 8'-0" above the surrounding walkway. The depth of the concrete base will be coordinated with the selected artist to ensure it will sufficiently support the sculpture.

The sculpture will be accessible to the public and must not pose any hazard, such as sharp edges or points that could cause lacerations, protrusions into the walkway, pieces not firmly connected that could loosen and fall off

Eligibility:

All professional artists or artist teams in the United States may apply. If artists are applying as a team, the team should be declared on the Application Form, specifying a team leader to receive notifications. Three references, including names and contact information, are required. Additionally, the artist must meet at least two of the following criteria to be considered for this commission:

- The artist has completed public art commissions
- The artist has received awards, grants or fellowships
- The artist has had work exhibited in museums or galleries

Staff or employees of the Howard County Government are not eligible to apply.

Budget Details:

The sculpture project budget is \$100,000. This allocation is subject to change depending upon the final selected design. This amount is inclusive of all costs associated with the project, including, but not limited to: artist fee and expenses (sub-consultants, travel/lodging, printing, overhead, etc.); fabrication details and specifications; materials and fabrication; transportation and installation; related permits, licenses, insurance; and significant site modification. Any expenses that exceed the contracted amount will be the artist's responsibility. The artist will be responsible for submitting an artwork maintenance manual upon completion. The artist will engage the community in a public forum, after the completion of the project, to introduce the artwork to the public.

Contract: The artist will contract directly with the Howard County Government and work with the Park Planner and other Recreation & Parks staff to oversee all aspects of the artwork from design development through project implementation and installation. Howard County's standard form of contract will be posted as an addendum to this RFQ. Contract will be executed between Howard County Government and the selected artist upon final approval of final design.

Submission Procedures:

1. **Application Process:** Artists apply online utilizing CaFÉ: www.callforentry.org. Applications must be submitted by **May 29, 2024, 11:00 AM ET**

Online application will include:

- **Application Form**
- **Statement of Interest** to create a sculpture for the Howard County Covid-19 Memorial and how the artist's public art experience benefits this project.

- **Eligibility Statement** explaining how the artist’s experience complies with at least two of the criteria for eligibility.
- **Resume or CV**
- **References** include at least three (3) art and/or design professionals who have detailed knowledge of the artist’s work and working methods. Include contact name, address, telephone number, and e-mail for each reference.
- Photographs of at least three previous sculpture works done by the artist or team.
- Concept sketches or digital renderings showing the overall concept for the sculpture. A minimum of two images, showing different views of the sculpture, shall be submitted. Additional images are permitted, at the artist’s discretion. Photos of models are permitted, at the artist’s discretion.
- A written description explaining the concept of the sculpture, focusing on how it reflects the vision for the memorial and how it fits into the setting of the memorial. A description of the materials of the sculpture must be included, explaining the durability of the materials and any unique maintenance conditions required.

2. **Artist Selection**

The Artist Selection Committee will select one (1) final artist or artist team. The artist finalist will enter into a contract with Howard County Government to develop the concept design for the artwork, through design development, fabrication, delivery and installation.

Evaluation Criteria:

Artists will be selected based on experience and qualifications using the following criteria:

- Artistic excellence and innovation demonstrated through past work, especially examples that integrate the themes of life sciences in the artwork
- Experience working collaboratively with multi-disciplinary professionals and committees
- The artist’s experience and Statement of Interest aligns with the Howard County Covid-19 Memorial goals and site specificity of the project
- The artist’s experience successfully designing and implementing prior projects on time and in budget

Concept Design Development:

The artist will commence the project with the Design Development phase that will include two to three in-person meetings as well as WebEx/conference call meetings as needed:

- **Design Development Presentation:** With written feedback from the Concept provided with the submission, the artist will refine the selected concept into the Design Development package that will include: scaled plans, elevations and digital renderings detailing the artwork concept. The package shall describe proposed artwork materials, fabrication technique(s) and timeline, anticipated weight and footing requirements of the sculpture, budget estimate, and written design development statement.
- **Final Design Presentation:** With written feedback from the Design Development Presentation, the artist will prepare the Final Design package that will include revised plans, elevations and renderings, material samples, selected fabricator, weight and footing requirements of the sculpture, schedule and final estimate.

Fabrication and Installation:

Upon written approval of the Final Design, the artist will commence to fabricate and install the artwork adhering to an agreed upon final budget and installation and payment schedule. Artist will attend artwork ribbon cutting and be available for presentations/meetings with students, the media and other County and State officials.

Anticipated Project Timeline

April 5, 2024	EOI posted
May 29, 2024	Application submission deadline on www.CallforEntry.org
June 3-14, 2024	Review committee will review submissions and conduct phone interviews if needed for clarification of submissions.
June 17, 2024	One finalist artist or artist team selected
July 22, 2024	Artist or artist team contracted for sculpture commission
July 29, 2024	Kick-off meeting
September 6, 2024	Design Development Presentation
September 27, 2024	Final Design Presentation (may be conducted by WebEx/conf call), artwork design approved. Permission to fabricate.
October 2024 –	
August 2025	Fabrication with studio check-ins
Early September 2025	Artwork installation in coordination with building construction schedule
Mid-late September 2025	Projected Artwork Ribbon-Cutting - Dedication

Questions:

For technical questions concerning the online application on CaFÉ, please go to: <https://www.callforentry.org/cafehlp.phtml> or email cafe@westaf.org, M-F 9:00-5:00 PM Eastern Time.