

SITE CONTEXT

Public Art Along Redbud Trail



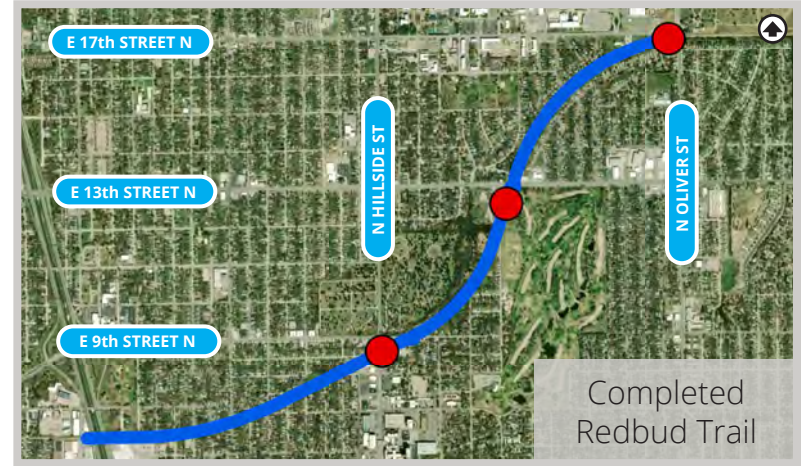
Art/Monuments at 175th St. and N Oliver St.



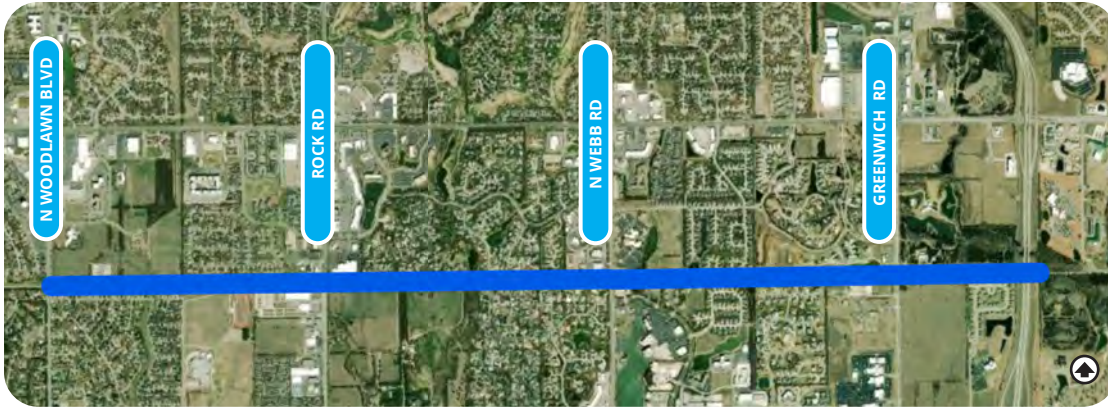
Arches off E 13th St.



Art/Monument on N Hillside St.



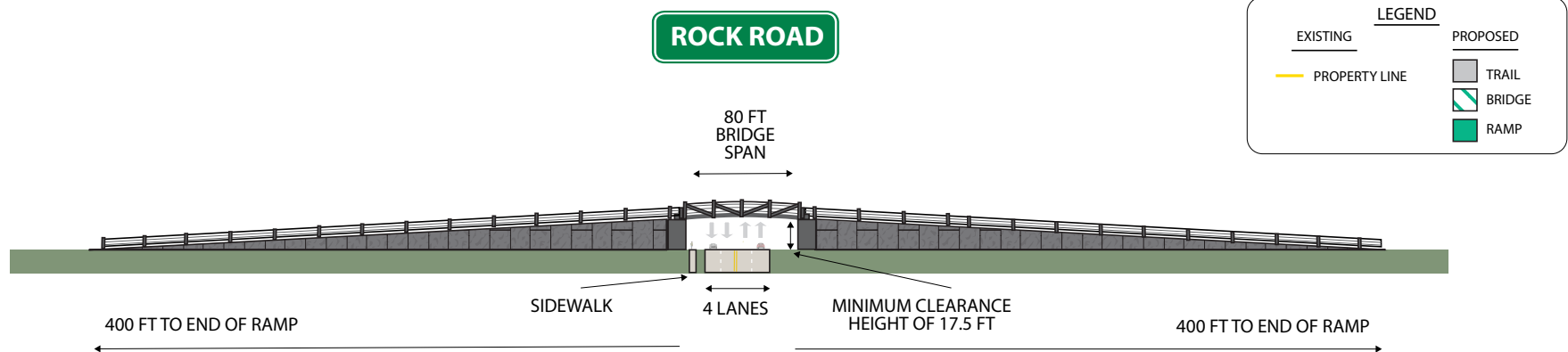
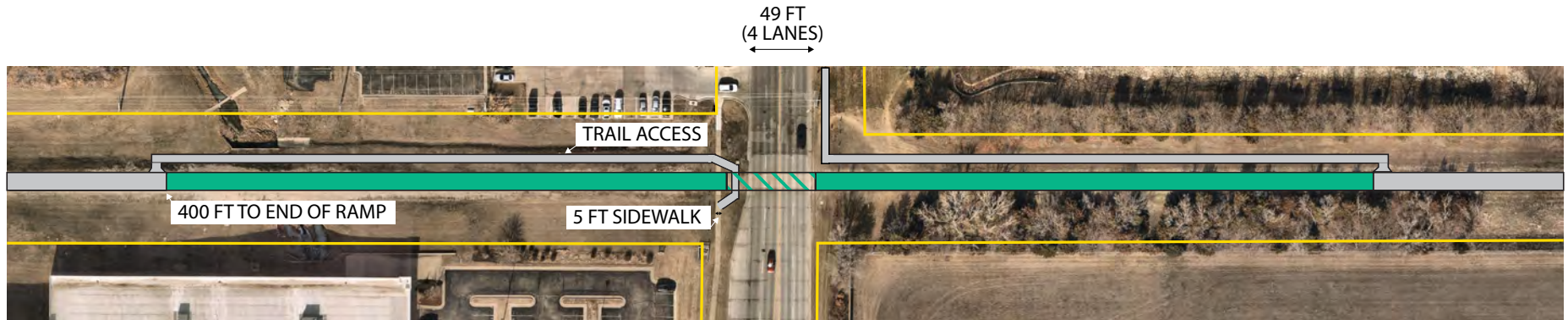
Completed Redbud Trail



BRIDGE ELEVATION



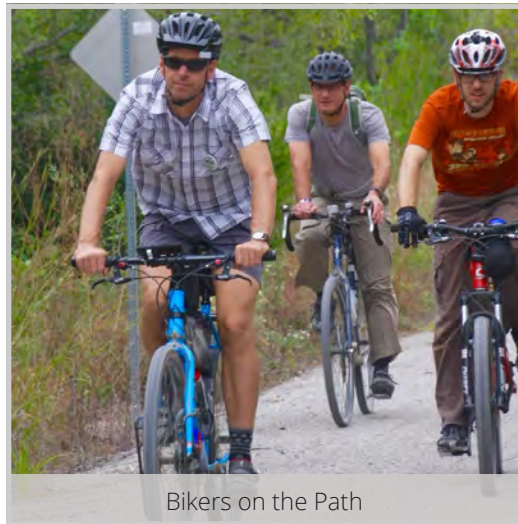
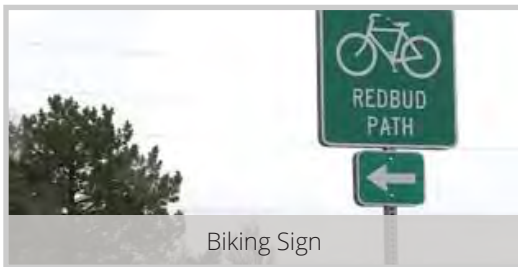
REDBUD TRAIL CONCEPTUAL LAYOUT ROCK ROAD CROSSING



THEMING POSSIBILITIES

Process/Motion Connectedness

Due to the nature of a long linear park, the idea is that a rhythm could be established with art elements. Depending on the mode of transportation, someone on a bike would experience the art differently than a person using the trail for walking or running.



This trail represents the connection of diverse neighborhoods within Wichita and diverse communities in this area of Kansas. From urban areas and suburbs in Wichita, Augusta, all share the connection to the Redbud Trail. Exploring what makes each neighborhood or community distinct and bringing art to celebrate the “ties that bind” could be impactful to all users of this popular trail.



Redbud Tree

Cercis canadensis is the genus and species for the Redbud tree. This tree has many valuable assets. The tree is native and hardy. The leaf has a distinct heart shape that could be playful and relevant. The spring flowers are showy, with spectacular color. More interesting facts:

- + The Eastern Redbud Tree is native to Kansas. It was the Wichita Arbor Day tree of the year for 1999.
- + George Washington and Thomas Jefferson both planted Redbuds at their respective homes of Mount Vernon and Monticello
- + The Spring flowering is enhanced by cold winters.
- + As a legume, the Eastern Redbud is nitrogen fixing, basically making its own fertilizer.
- + In full sun, the Eastern Redbud Tree can grow 2' or more per year!
- + The flowers are edible raw or cooked.
- + Numerous species of birds and other wildlife enjoy the seeds from the Redbud Trees in the winter.

