

MURAL WALL LOCATIONS - FIRST FLOOR PLAN



NORTH ELEVATION WITH MURAL



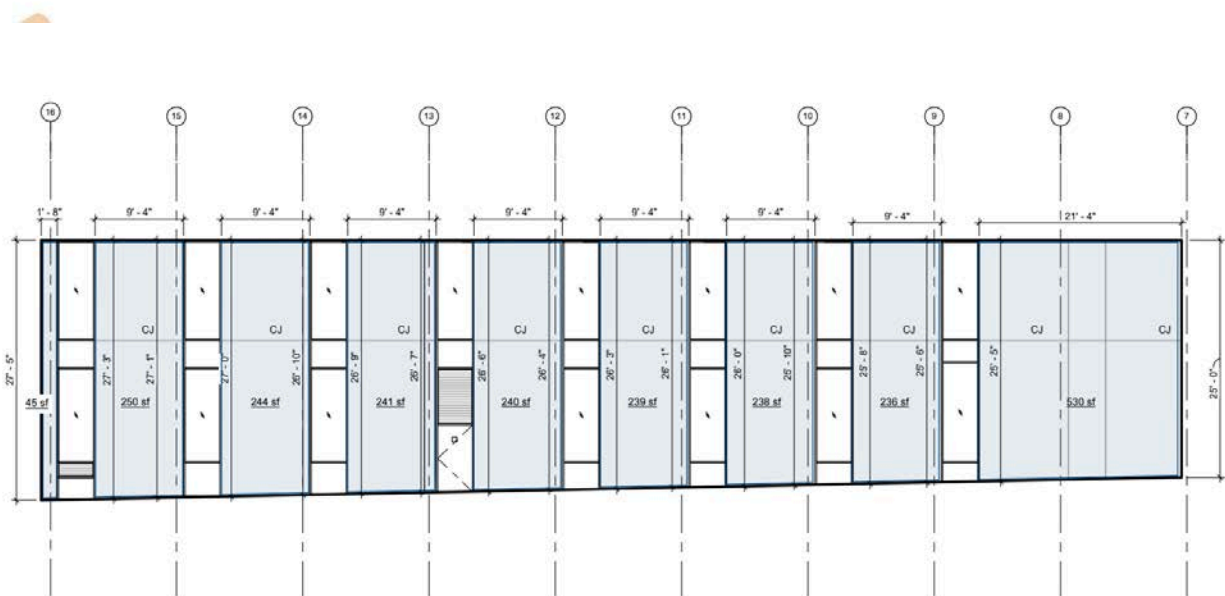
STAIR ELEVATION WITH MURAL



NORTH ELEVATION WITHOUT MURAL



STAIR ELEVATION WITHOUT MURAL



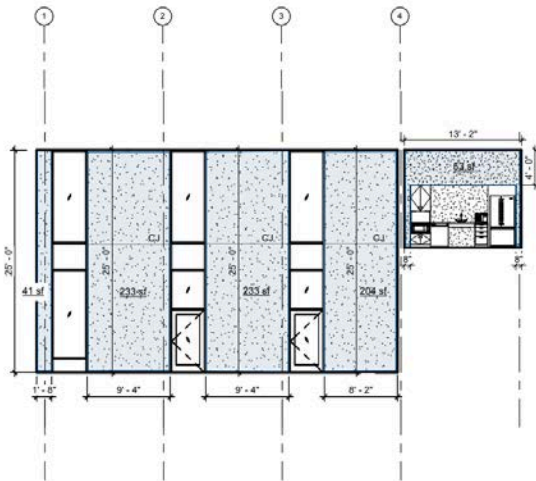
1 NORTH ELEVATION - MURAL WALL PANEL LAYOUT
1/8" = 1'-0"



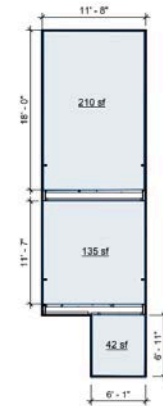
SOUTH ELEVATION WITH MURAL



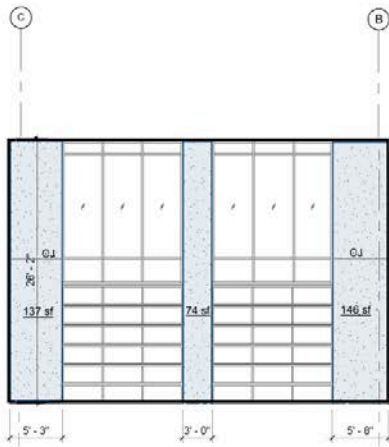
SOUTH ELEVATION WITHOUT MURAL



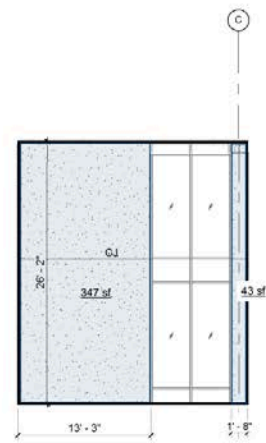
1 SOUTH ELEVATION - MURAL WALL PANEL LAYOUT
1/8" = 1'-0"



2 MURAL WALL AT INTERIOR STAIR
1/8" = 1'-0"



1 EAST ELEVATION - MURAL WALL PANEL LAYOUT
1/8" = 1'-0"



2 WEST ELEVATION - MURAL WALL
1/8" = 1'-0"