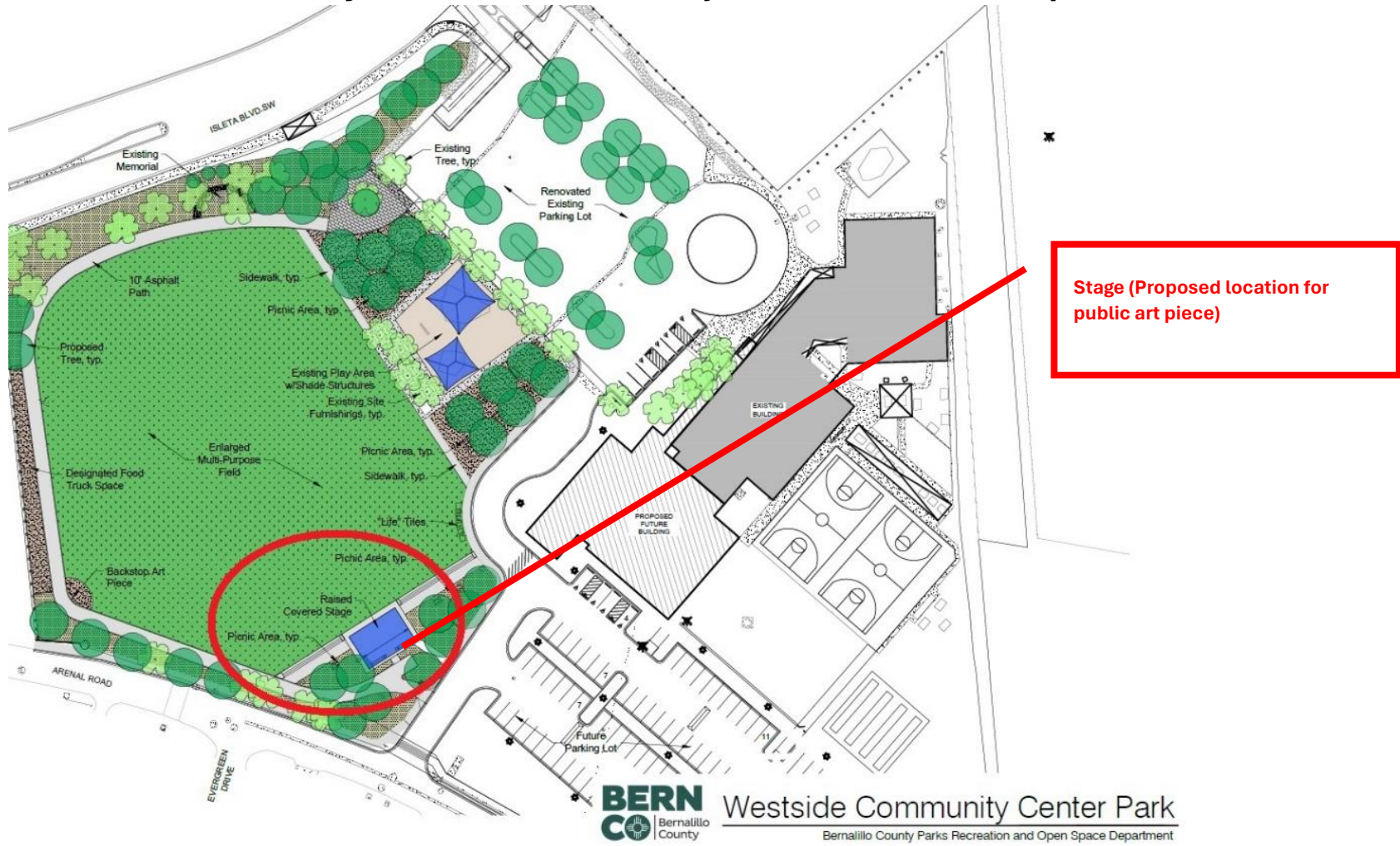


West Side Community Center Public Art Project Site Plan and Graphics





Park renovations (detail showing stage area)



Stage area (current conditions as of 4/24/2024 without cover) looking north



Stage (looking south)

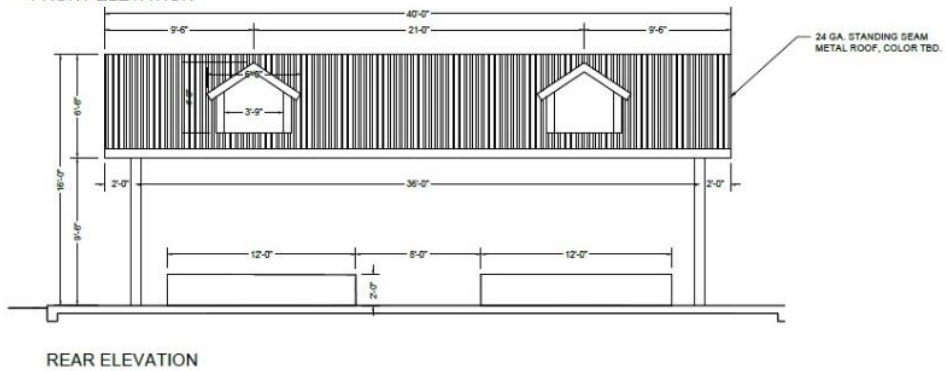
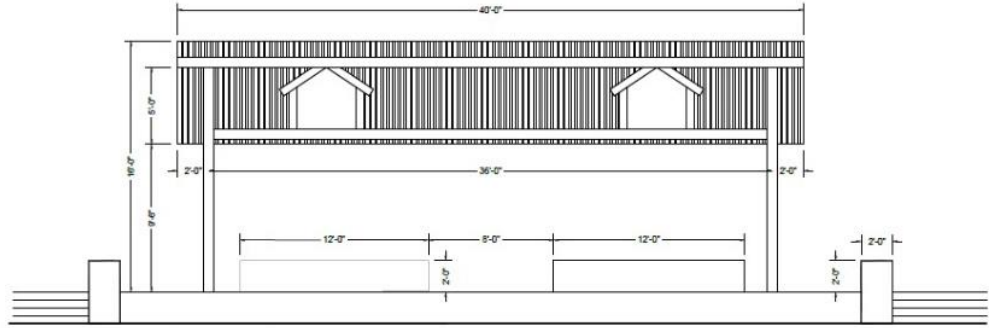
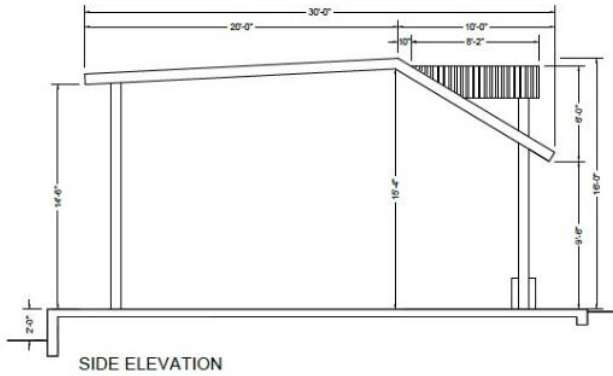


Stage (looking east)

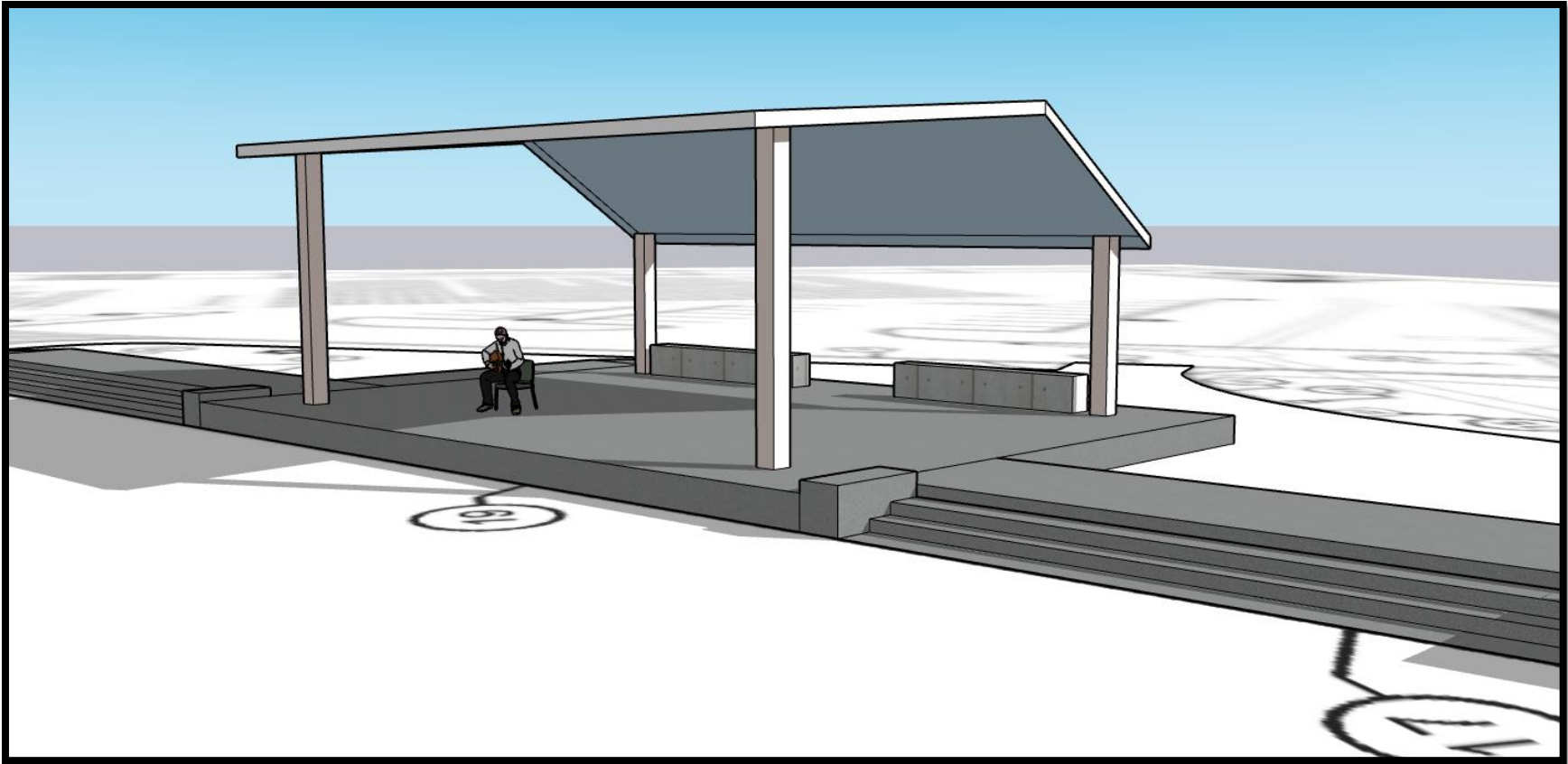


Stage (looking North)

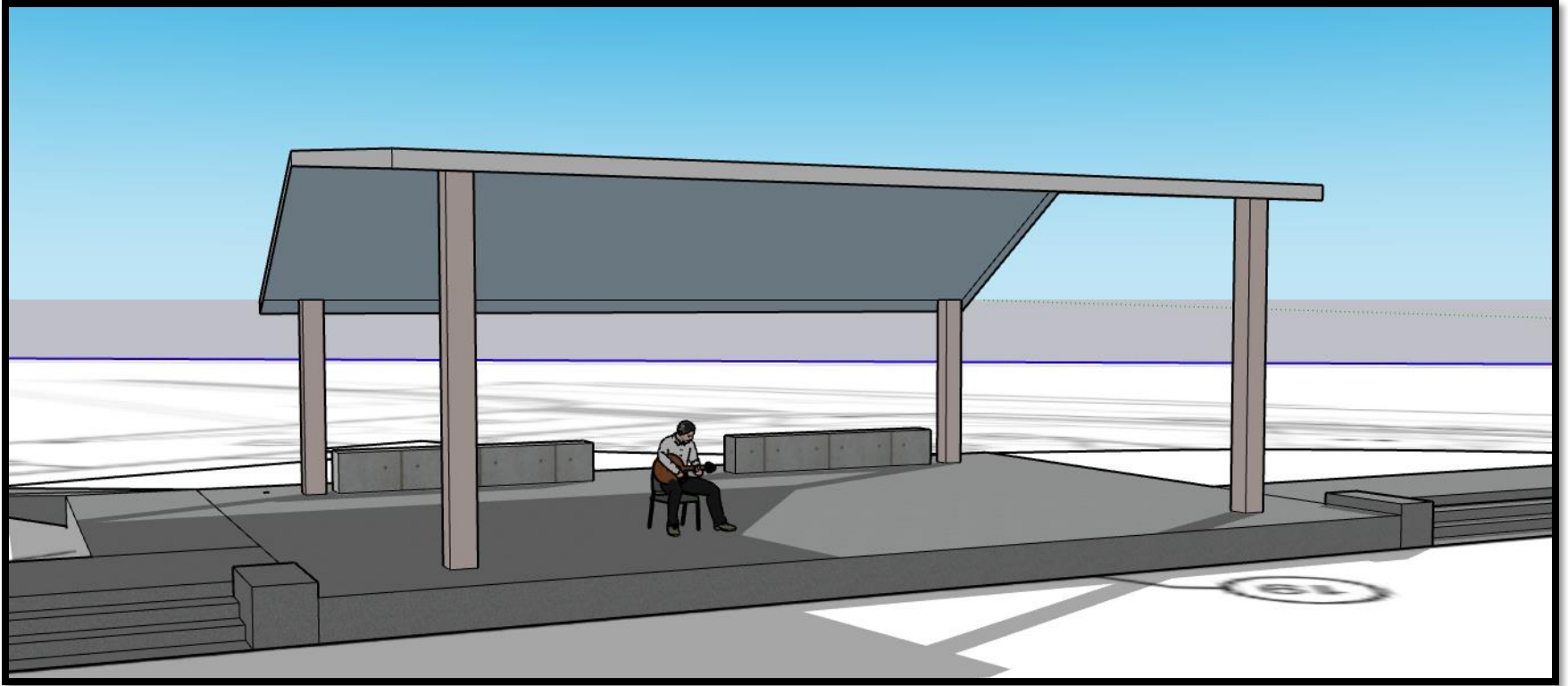
NOTE:
 SHADE STRUCTURE DETAILS ARE FOR DESIGN INTENT ONLY.
 CONTRACTOR TO PROVIDE SHOP DRAWINGS FOR ALL
 COMPONENTS OF THE SHADE STRUCTURE, INCLUDING POST
 FOOTINGS, CONNECTION HARDWARE, AND FASTENERS. SHOP
 DRAWINGS ARE TO BE SEALED AND SIGNED BY A STATE OF NEW
 MEXICO LICENSED STRUCTURAL ENGINEER.



Design of future shade structure



Rendering of future stage cover



Rendering of future stage cover