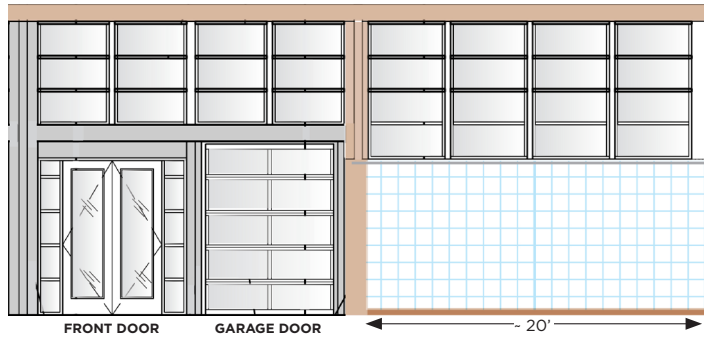


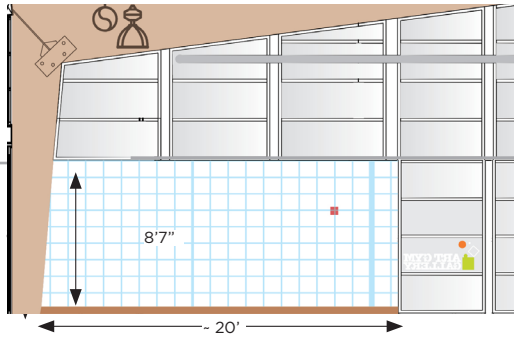


GALLERY FLOOR & WALL PLANS

FACING SOUTH WALL



FACING WEST WALL



- baseboard height: 5.5"
- baseboard to hanging system: 8' 7"
- hanging system to top: 1' 4"



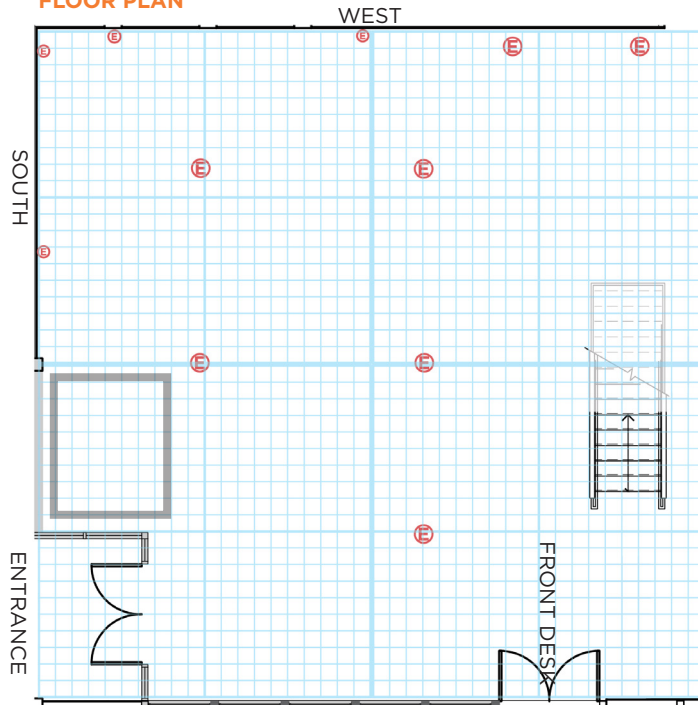
GALLERY STATS:

- ~ 1200 sq. ft.
- ~ 400 sq. ft. gallery walls
- ~ 340 sq. ft. moveable walls
- track lighting thru out gallery

LEGEND

- = 1 square foot
- = electrical outlet

FLOOR PLAN

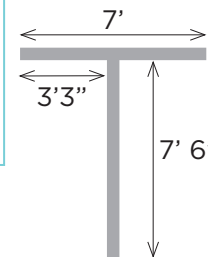


PEDESTALS AVAILABLE

Width	Depth	Height
16	16	32
19	19	42.5
12	12	43
12	12	32
17	15	42
24	24	36
24	24	36
21	15	36
23	23	32
16	20	30
17	36	36
19	19	32
18	18	36
20.5	28	30
18.5	24	24

(2) MOVEABLE WALLS with electricity

Height: 7'9"



- baseboard height from floor: 6"
- baseboard to hanging system: 7' 3"