

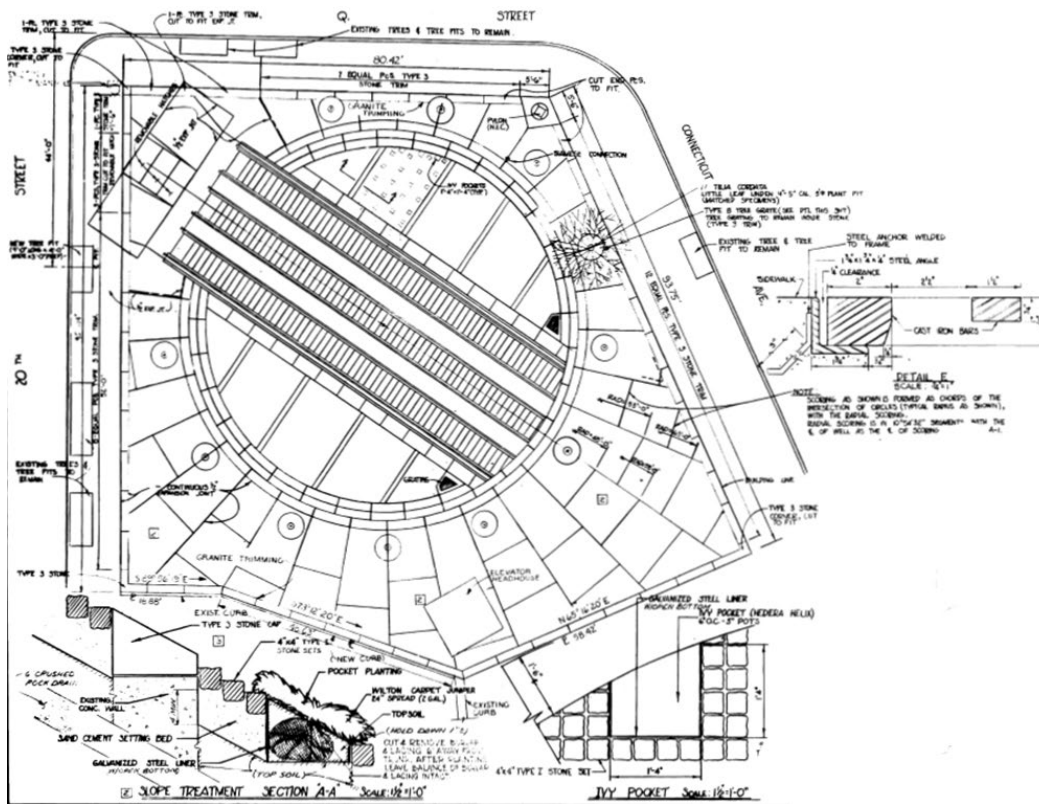
PROJECT INFORMATION – REQUEST FOR QUALIFICATIONS

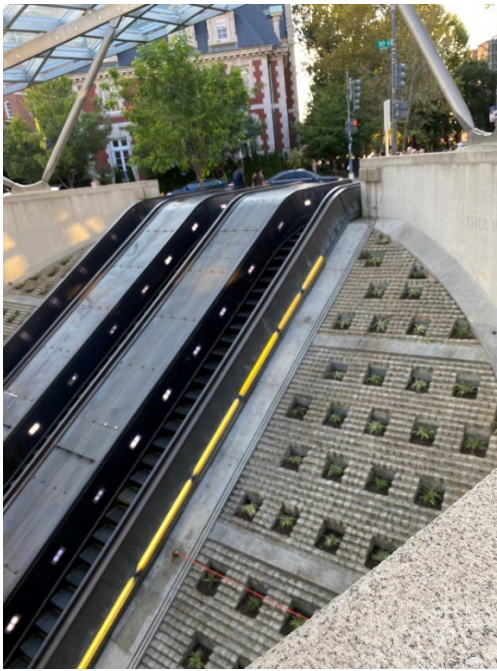
DUPONT CIRCLE METRO STATION NORTH ENTRANCE

PART 2 – DUPONT CIRCLE METRO STATION NORTH ENTRANCE OVERVIEW:

About the Q Street North Entrance

The Q Street or North Entrance to the Dupont Circle Metrorail Station is remarkable for its large circular opening, granite curving wall, and deep angle of descent that creates a monumental space that is unique in the Metro system. This large circular street level entrance contains three escalators that descend 188 feet – one of the deepest stations in the system. The depth of the station was determined by the need for the rail line to go under Rock Creek, a major north-south tributary of the Potomac River running through Washington, D.C.





The designers/architects softened the North entrance's massive, monolithic masonry by including planted terraces on each side of the escalators. Over the years, the original planters have attracted rodents, creating public health concerns and a perception of unsafe conditions. Additionally, the circular glass and metal overhead canopy installed in 2022 over the north entrance escalator well (the only circular canopy and the largest one in the system) has changed the amount of water and sunshine the plants receive, making maintenance even more challenging. To address these conditions, the Authority is advancing an Art in Transit solution that will both respect and heighten the status of this iconic entrance to the Metrorail system.

The Art in Transit project, outlined in this RFQ, is looking to implement a biophilic design that focuses on aspects of the natural world and enhances customers and the community's experience.



About Existing Artworks:

While the large circular opening and its monumental canopy have a great streetscape presence and plays an outsized role in the neighborhood's character, the Dupont Circle Station North Entrance is also noteworthy for the engraved excerpt of Walt Whitman's poem *The Wound-Dresser* in which Whitman describes the work he did as a volunteer in Washington's hospitals during the Civil War. The excerpt was engraved on the entrance's parapet walls in 2006 as a way to honor the caregivers who had nursed the sick in the earliest days of the city's HIV crisis. <https://www.wmata.com/initiatives/art-in-transit/ait-dupont-circle.cfm>



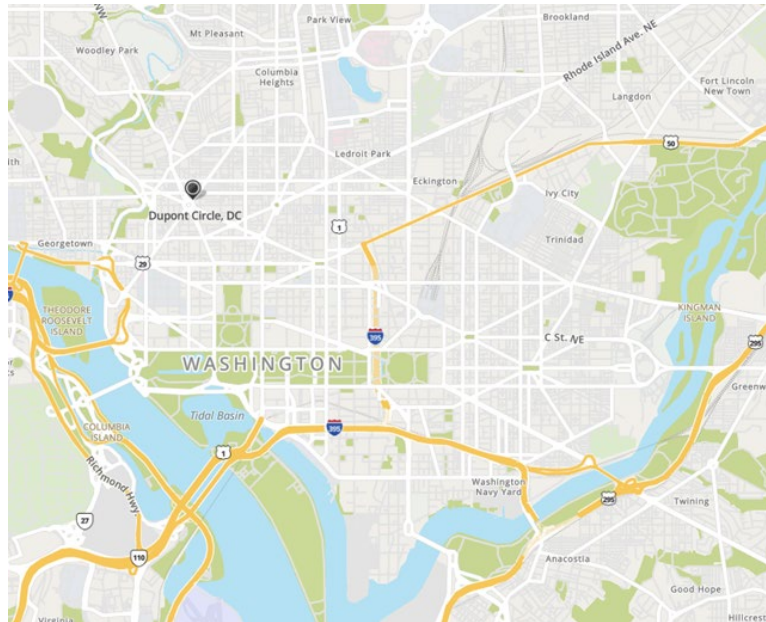
Along with Whitman's poem, an excerpt from "We Embrace," a poem by local poet and activist E. Ethelbert Miller, is inscribed into the sidewalk surrounding a nearby circular bench. This artwork captures the identity of the Dupont Circle neighborhood as the longtime center of the gay community in Washington D.C. <https://www.wmata.com/initiatives/art-in-transit/ait-dupont-circle-we-embrace.cfm>

https://www.washingtonpost.com/local/hark-what-poem-leaps-from-yonder-metro-wall/2013/05/18/42194bf4-be3a-11e2-9b09-1638acc3942e_story.html



PART 3 – DUPONT CIRCLE NEIGHBORHOOD OVERVIEW:

Dupont Circle Neighborhood Overview



PART 4 – SITE-SPECIFIC PUBLIC ARTWORK PARAMETERS AND GOALS:

Site considerations:

The project is to be implemented within the circular opening of the North Entrance escalator well (areas highlighted in yellow).

