



# Merriam Community Center Campus

## Public Art Project Site Information



**Merriam Community Center** 6040 Slater St., Merriam, KS 66202



# Exterior Stairs

The exterior stairs are 8 feet wide and includes 24 steps with two landings on the main staircase. The west side of the stairs is against the concrete parking structure wall, while the east side of the stairs is grass with a long ADA compliant sidewalk. A crosswalk is located at both the base and the top of the stairs. Two additional sets of stairs are located farther up the path with five steps each.

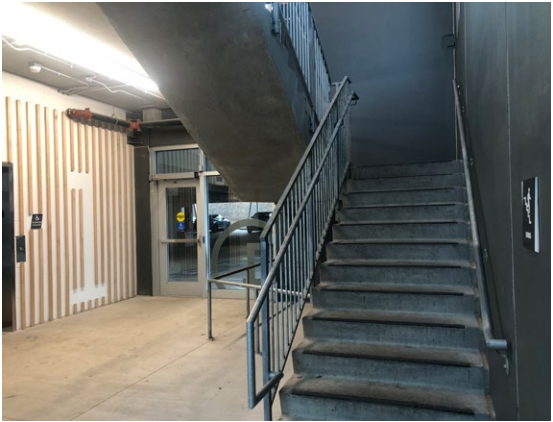




# Interior Stairwell

The interior stairwell is an asymmetrical structure that includes approximately 1,000 square feet of blank, concrete wall surface area. Artists are not required to use every wall or surface. Artists can choose to utilize steps, railings, or adjacent surroundings. Artwork must be building code compliant. Measurements are approximate. The awarded finalist will be responsible for making their own measurements.

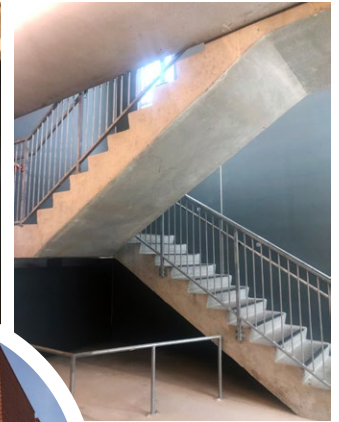
## Level 1



Looking west



Looking east



Stairs: 4' wide



East Walls: Approx. 10'x11'  
Windows/door: 8'4" wide

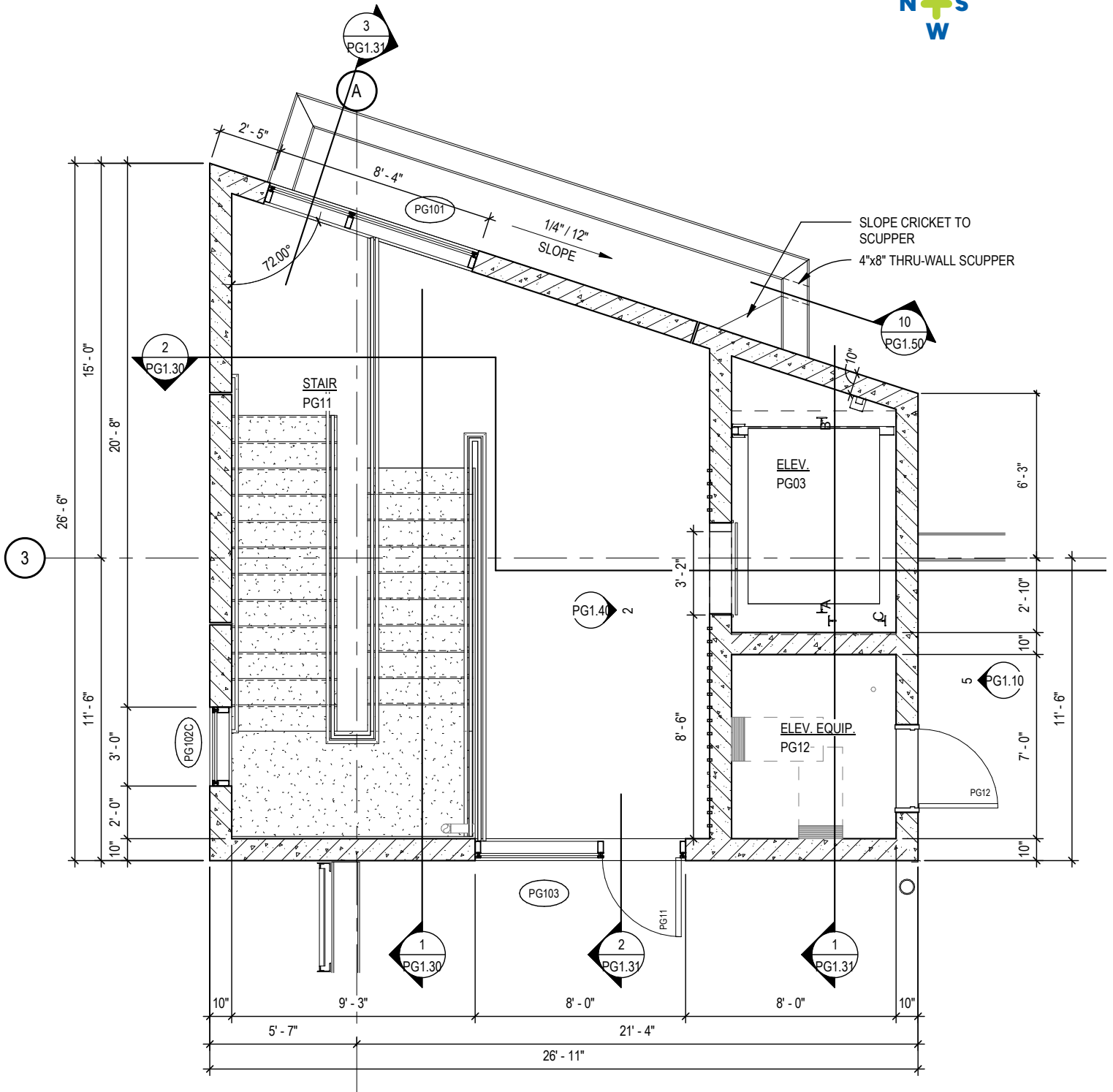
## Level 2



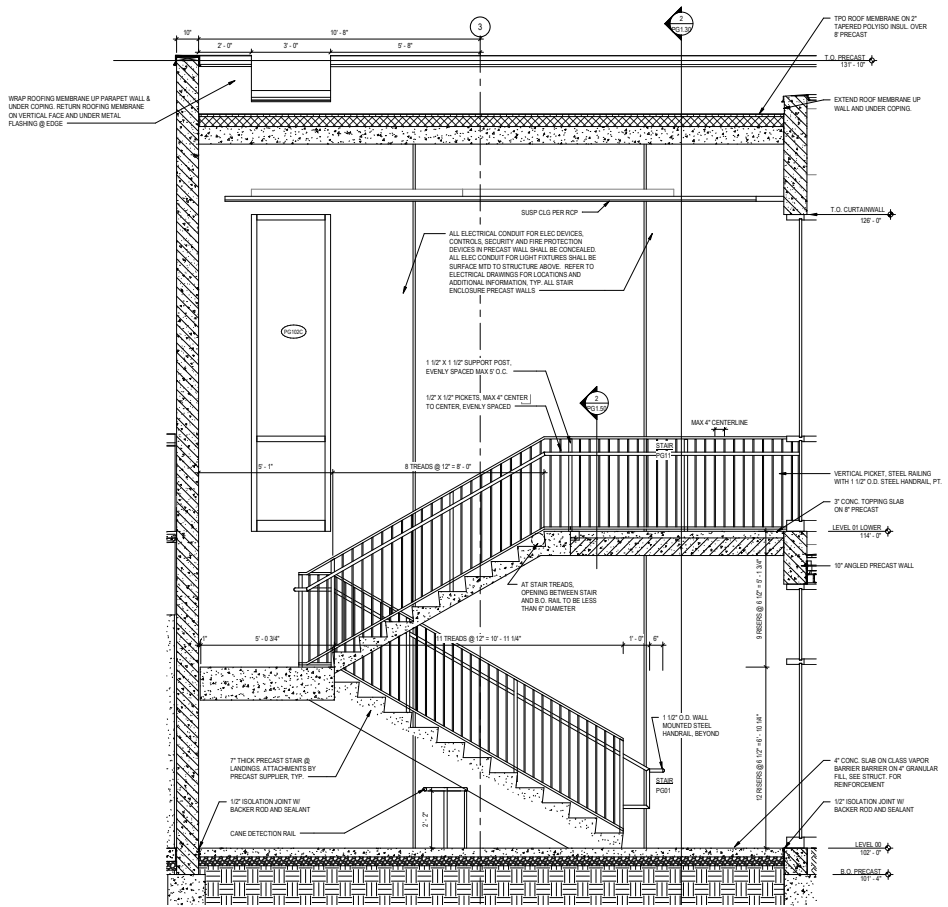
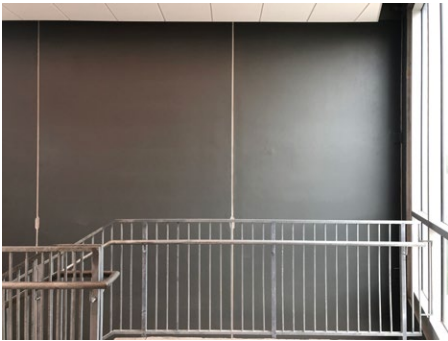
Panoramic of north and east walls  
from the Level 2 entrance  
North Wall: Approx. 24'x24'



# Interior Stairwell Floor Plan



# North Wall: Approx. 24'x24'



# West Wall: Approx. 8'x17' at landing

