

HOWARD COUNTY BUS SHELTER BEAUTIFICATION/ART PROJECT

HOWARD COUNTY, MARYLAND

CALL TO ARTISTS REQUEST FOR EXPRESSIONS OF INTEREST

No. EOI-02-2025

Issued: December 12, 2024

Application Deadline: February 7, 2025

Contact: Howard County Office of Procurement
and Contract Administration
Dean Hof, CPPO
Procurement Administrator
dhof@howardcountymd.gov
Phone: (410) 313-4239

Project Title: Howard County Bus Shelter Beautification/Art
Project

Apply online: CaFÉ: www.callforentry.org

Howard County History:

Howard County officially became the 21st of Maryland's 23 counties in 1851. It was named in honor of John Eager Howard, statesman, soldier and fifth governor of Maryland. Howard County was mainly farming and hunting grounds for the Native Americans until 1687 when Adam Shipley was granted property on the Patapsco River from Lord Baltimore and started the farming tradition. The County's history included the Carroll family, signers of the Declaration of Independence and one of America's wealthiest families, and the Ellicott brothers who established a flour mill on the Patapsco River and went on to create the largest pig iron foundry on the east coast, and Ellicott Mills, one of the greatest milling and manufacturing towns in the east at that time. They built roads, bridges, a wharf in Baltimore, schools, the first railroad terminal on the B & O railroad and the first part of the National Road that was later to become America's first interstate highway.

The county was predominately agricultural in character until 1966, when construction began on the new town of Columbia, which was planned and developed by the Rouse Company, led by its founder James Rouse. Beginning with an idea and the purchase of 14,000 acres in the mid-1960's, Columbia reached its original population projection of 100,000 residents by 2015 and has met or exceeded the goals put forth in its original proposal and advertising.

The county is ideally located midway between Baltimore and Washington, DC and has grown substantially in population to over 325,000 today. It is known for the best schools in Maryland and is now one of the top 10 wealthiest counties in the nation. Under a home rule charter since 1968, Howard County is governed by an elected County Executive and a five-member County Council.

Project Introduction:

Howard County Executive Calvin Ball and the Howard County Office of Transportation are excited to announce a Request for Qualifications (RFQ) from local artists to develop and install public artwork at designated transit stops in Howard County. This RFQ seeks to identify emerging or professional artists to create an original artwork display for Regional Transportation Agency of Central Maryland (RTA) bus shelters located along US Route 1/ Washington Boulevard and at local high schools in the county. The commissioned artwork will contribute to the County's bus stop beautification efforts, highlight the community's creative energy and vibrancy, engage with riders, and inspire all who are utilizing public transportation networks in Howard County.

Artwork Intent and Goal:

Art design concepts should be forward thinking, vibrant, and upbeat. Themes of transit can be included in the art but are not a requirement to be selected. The artwork design should be affirming and inspirational, evoking positivity. The artwork may relate to the location in design and content. For example, art could connect visually to the site or interpret historical, environmental, decorative, architectural, scientific, or cultural aspects of the site.

Artwork should be designed to last at least five years. Artwork may be open to the weather, and any permanent damage to the artwork may result in its early removal.

Proposed Artwork Details:

The selected artist(s) will receive a commission to create three (3) design concepts for review and design revision work. Sketch, mockup, and final design submissions of proposed artwork will be required from selected artists and must meet the outlined design criteria for the US 1 Bus Shelter Beautification Program. The selected artist(s) shall provide an installation plan (art implementation site workdays, hours, etc.) for approval by the Howard County Office of Transportation. Upon completion of the final artwork design and approval by the Howard County Office of Transportation, the selected artist(s) will receive an additional fee to implement and install the final artwork at the RTA bus shelters. The credited artwork will appear in

news releases, advertisements, and social media promotions. The artist(s) will be publicly acknowledged for their work. Acceptable design proposals are 2-D works (murals, clings, etc.) and 3-D works (mosaics, sculptures, etc.) All proposed designs must be delivered in a file no less than 300 dpi. Standard shelter dimensions are shown in Attachment A. However, measurements should be verified by the artist before submission of final design. The art will be displayed on each individual proposed shelter.

In order for artwork to function well on RTA bus shelters, it should not interfere with the primary use of the shelter. Proposed artwork must not completely block visibility into the shelter or obstruct the line of sight so that transit riders and bus drivers can see into and out of the shelter. Transparent artwork designs will be considered.

Budget and Fee Schedule:

Art project funding is inclusive of artist fees, material supplies, installation costs, transportation expenses, and income taxes. Artist payments will be administered in phases as deliverables are met.

- Phase One: Delivery of artwork concept design and final design, \$500
- Phase Two: Delivery and installation of final artwork design, \$1,000
- Total Budget Per Artwork: \$1,500

Site Work Requirements:

The selected artist(s) must comply with the following restrictions: Storage of paint or supplies on site is not permitted. The Howard County Office of Transportation will set approved work hours for the selected artist(s) in advance of the start of installation. The selected artist is required to abide by all laws, regulations, and safety measures outlined by the County.

Identified Bus Stop Locations:

- Route One Corridor RTA Bus Stop Shelters
 - Washington Blvd / Dorsey Road 40829
 - Rowanberry Dr / Washington Blvd (Northbound) 40541
 - Rowanberry Dr / Washington Blvd (Southbound) 40580 (library stop)
- High School Bus Stop Shelters
 - Hammond High School
 - Long Reach High School
 - Oakland Mills High School
 - Wilde Lake High School
 - Atholton High School
 - Howard Community College Bus Stop Shelter

High School Bus Shelter Dimensions

Shelter	Hammond	Oakland Mills	Wilde Lake	Long Reach	Atholton
Length	151"	151"	154 3/4"	98"	154 3/4"
Width	75"	75"	54 1/2"	55"	54 1/2"
Height	91"	91"	95 1/2"	99"	95 1/2"

Eligibility:

- This opportunity is open to emerging or professional artists over the age of 18.
- Howard County-based artists are encouraged to submit proposals.

- Staff or employees of the Howard County Government are not eligible to apply.

Submission Procedures:

Application Process: Artists shall apply online utilizing CaFÉ: www.callforentry.org.

Applications must be submitted by **Friday, February 7, 2025, 11:59 PM EST**

Online application shall include:

- Application Form including name and contact information
- Resume or CV
- At least three (3) image samples (pdf, png, jpeg) documenting completed artworks, designs, or models
- Preferred location(s) for installation of public artwork, if applicable
- A written description explaining the concept of the proposed artwork, focusing on how it reflects inspiration and evokes positivity. A description of the materials of the artwork must be included, explaining the durability of the materials and any unique maintenance requirements.

Selection Criteria:

Applications will be evaluated on the following criteria

- Quality of past work
- Professional experience
- Visual and technical sophistication

Notification of Selected Artist:

A review panel of project stakeholders assembled by the Howard County Office of Transportation will select and notify artists by February 28, 2025. The Howard County Office of Transportation reserves the right to not select any of the applicants and to reissue or reopen the RFQ.

Anticipated Project Timeline

December 12, 2024 – Request for Qualifications issued

February 7, 2025 – Deadline for RFQ applications

February 28, 2025 – Artist(s) selection and notification

March 28, 2025 – Artist(s) submit final design for approval

June 27, 2025 – Deadline for artwork completion and installation

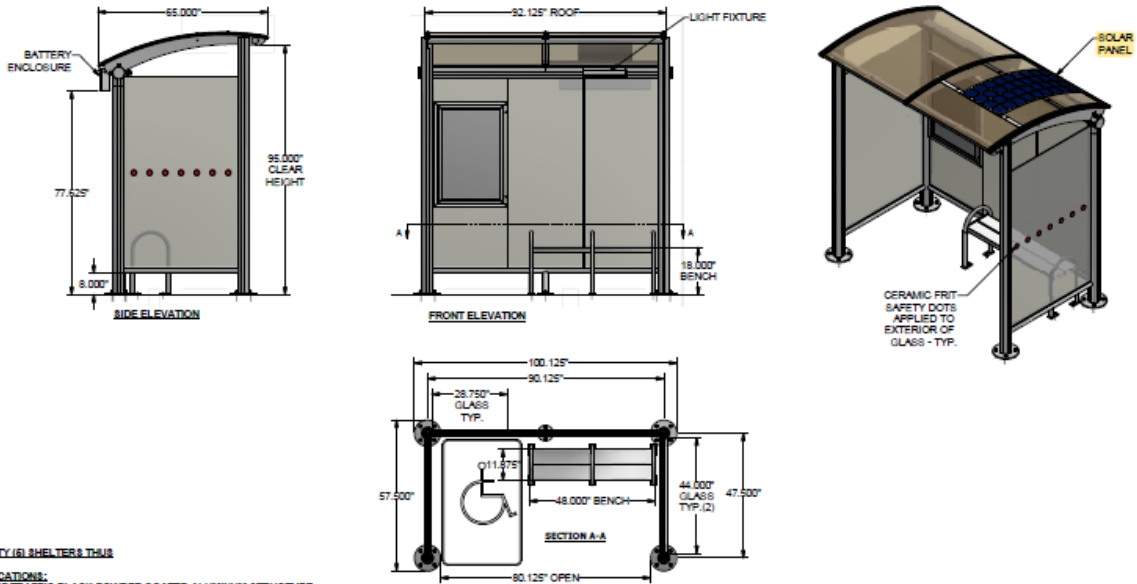
Questions:

For technical questions concerning the online application on CaFÉ, please go to:

<https://www.callforentry.org/cafehlp.phtml> or email cafe@westaf.org, M-F 9:00-5:00 PM Eastern Time.

ATTACHMENT A

RTA BUS TRANSIT SHELTER SPECIFICATIONS (LATEST MODEL)



QUANTITY (6) SHELTERS THIS

PECIFICATIONS:
 RAL8017 TRAFFIC BLACK POWDER COATED ALUMINUM STRUCTURE
 3/8" CLEAR TEMPERED SAFETY GLASS WITH RED CERAMIC FRIT SAFETY DOTS
 4" CURVELINE BENCH WITH RAL3001 SIGNAL RED BENCH SLATS
 28" x 40" DISPLAY CASE (LEFT REAR WALL)


8mm BRONZE ACRYLIC ARCHED ROOF WITH CLEAR ANODIZED RAFTERS
 AND RAL3001 POWDER COATED HEADER AND SUPPORT BAR
 SOLAR LIGHTING PACKAGE WITH L.E.D. LIGHT FIXTURE AND BATTERY ENCLOSURE

ADDITIONAL ITEMS:
 FULL SET OF REPLACEMENT GLASS

DUE TO THE UNIQUE CHEMICAL PROCESS OF ANODIZATION, THERE IS NOT A TOUCH
 UP PAINT AVAILABLE TO MATCH THE CLEAR ANODIZED FINISH

**THIS DRAWING IS CONFIDENTIAL AND IS FOR THE EXCLUSIVE USE OF
 OUR CUSTOMERS AND MAY NOT BE REPRODUCED OR COPIED
 WITHOUT WRITTEN PERMISSION FROM BRASCO INTERNATIONAL.
 LEAD TIME BEGINS UPON RECEIPT OF SIGNED APPROVAL.**

SIGNED: _____ DATE: _____

 BRASCO INTERNATIONAL, INC. 32400 INDUSTRIAL DR. MADISON HEIGHTS, MICHIGAN 48071 1-800-893-3685 WWW.BRASCO.COM	CUSTOMER:	HOWARD COUNTY	DRAWN:	HAUIS	DATE:	8-7-22
	PROJECT:	ECLIPSE STYLE TRANSIT SHELTER	DATE:	8-7-22	DATE:	8-7-22
THIS DRAWING IS CONFIDENTIAL AND IS FOR THE EXCLUSIVE USE OF OUR CUSTOMERS AND MAY NOT BE REPRODUCED OR COPIED WITHOUT WRITTEN PERMISSION FROM BRASCO INTERNATIONAL.	MODEL:	EC-0508-F-04R-PC-TG-0-0-0	JOB #	8988	SHEET:	8-001
					SCALE:	A