



CITY OF BEND

City of Bend Public Works Campus

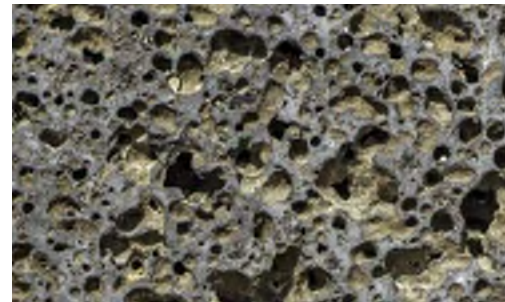
Site Structures on Campus

NOVEMBER 11, 2024

Project Background

CAMPUS CONTEXT & INSPIRATION

The campus is nestled in rock outcroppings and Junipers and takes inspiration both in form and material from the Central Oregon context of textured volcanic rock, lava tubes, weathered Junipers, and Cascade mountain peaks.



CAMPUS MATERIAL PALETTE

The natural weathering material on campus reflect the Central Oregon context such as red painted hills, lava rock, desert landscape, and the play of shadow and light create a variation of textures



CAMPUS PLAN

The new public works campus site design is driven by preservation of natural features, passive energy strategies, effective and safe operations, and equity.

main campus entry and exit

headquarters building

warm vehicle parking shops/warehouse building

campus exit



staff + public parking

bike and trash enclosures

central utility plant

fleet maintenance building

vehicle parking (covered + open)

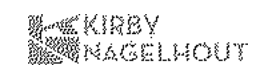
bulk storage (uncovered)

covered outdoor storage structure



CITY OF BEND

CITY OF BEND PUBLIC WORKS CAMPUS | ART - SITE STRUCTURES | NOVEMBER 11, 2024

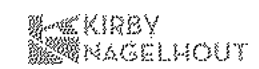


CAMPUS OVERVIEW



CITY OF BEND

CITY OF BEND PUBLIC WORKS CAMPUS | ART - SITE STRUCTURES | NOVEMBER 11, 2024



ENTRY TO CAMPUS

The main entrance to campus for both public visitors and on-campus employees is the entrance from Talus Place on the north side of campus.



MAIN ENTRY TO CAMPUS; THE HEADQUARTERS AND OPERATIONS BUILDINGS

CAMPUS VIEWS

The campus has a distinct language that relates & responds to its desert surroundings. Junipers are spread throughout and the natural Central Oregon landscape is very present on campus.



HEADQUARTERS SOUTH ELEVATION



HEADQUARTERS MAIN ENTRY

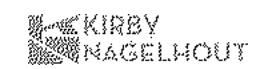


CAMPUS FROM THE INTERIOR COURTYARD



CITY OF BEND

CITY OF BEND PUBLIC WORKS CAMPUS | ART - SITE STRUCTURES | NOVEMBER 11, 2024



Art at Site Structures on Campus

ART AT SITE STRUCTURES ON CAMPUS

Rusted corten panels at the Bike, Trash, and the Utility Enclosures are canvases for “pixelated” graphic art murals that can celebrate and reinforce Public Works or share something unique and special about Central Oregon.



TRASH ENCLOSURE



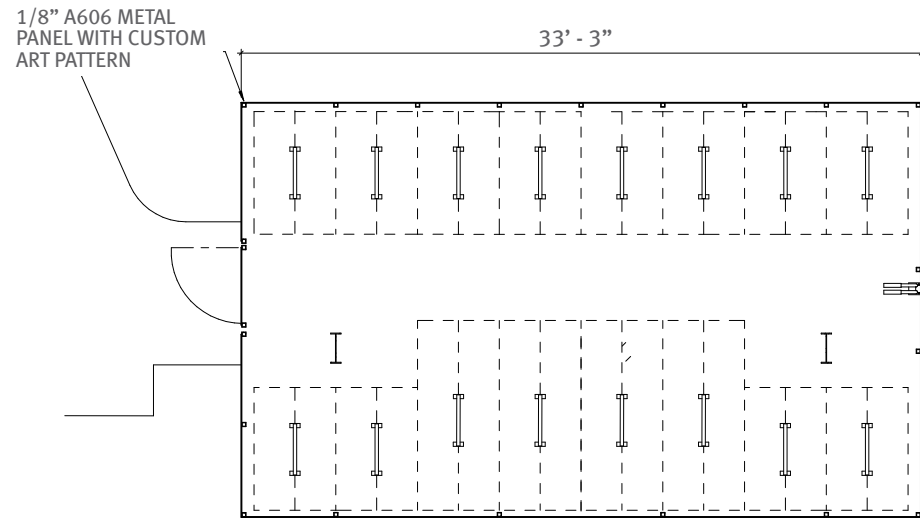
BIKE SHELTER



CENTRAL UTILITY PLANT ENCLOSURE

BIKE SHELTER

The small shelter will house bike parking and the north wall will serve as a canvas for graphic art to be pixelated in the form of perforations into the pre-rusted metal panel, allowing daylight into the shelter and allowing the structure to glow in the evenings, displaying the inspired graphic art for all to enjoy.



bike shelter

trash enclosure



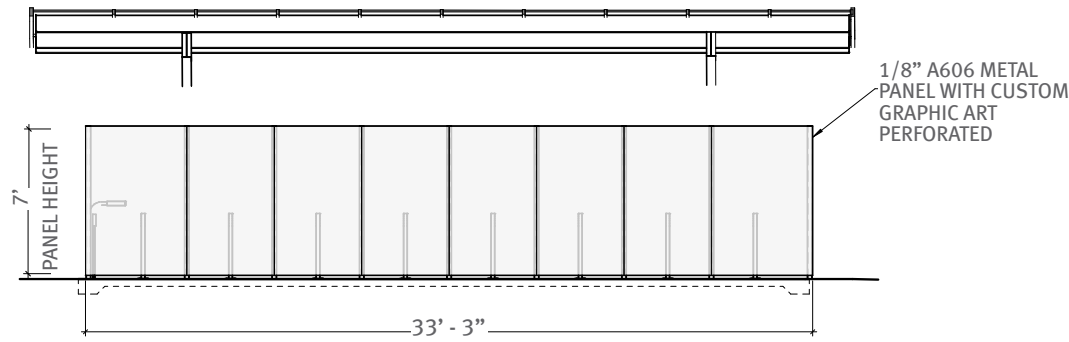
CAMPUS AXONOMETRIC



BIKE SHELTER

BIKE SHELTER

The small shelter will house bike parking and the north wall will serve as a canvas for graphic art to be pixelated in the form of perforations into the pre-rusted metal panel, allowing daylight into the shelter and allowing the structure to glow in the evenings, displaying the inspired graphic art for all to enjoy.



BIKE SHELTER - NORTH ELEVATION

1/8" A606 METAL PANEL WITH CUSTOM GRAPHIC ART PERFORATED



1/8" A606 METAL PANEL WITH CUSTOM GRAPHIC ART PERFORATED



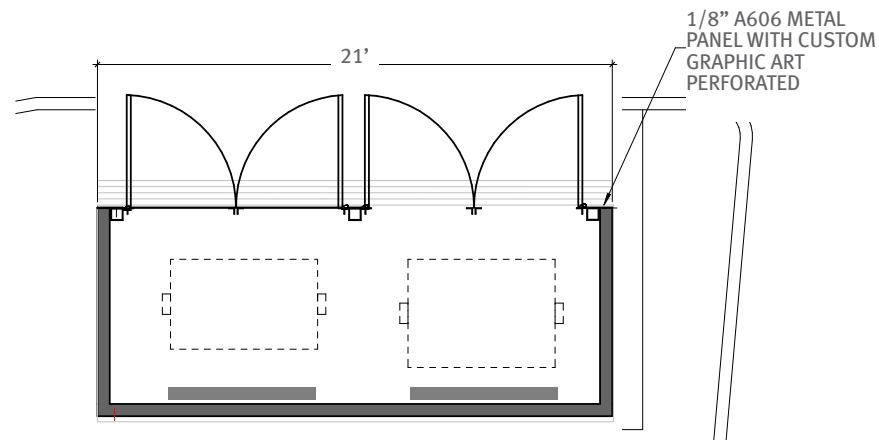
BIKE SHELTER - NORTH

BIKE SHELTER

TRASH ENCLOSURE

The trash enclosure is located in the main parking lot, and the north wall will serve as a canvas for graphic art to be pixelated in the form of perforations into the pre-rusted metal panel to be enjoyed by all staff and visitors to campus.

1/8" A606 METAL PANEL WITH CUSTOM GRAPHIC ART PERFORATED



TRASH ENCLOSURE - PLAN



TRASH ENCLOSURE - VIEW FROM PARKING LOT

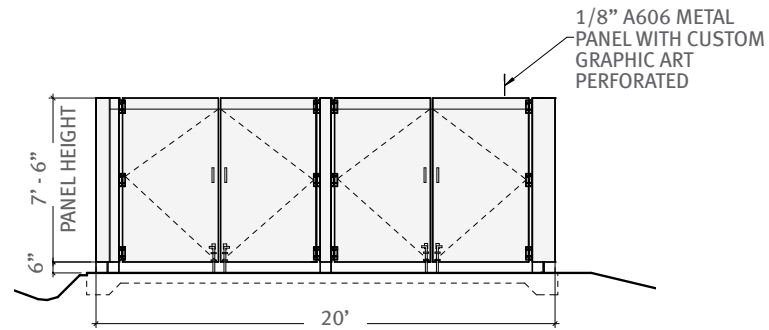
bike shelter
trash enclosure



CAMPUS AXONOMETRIC

TRASH ENCLOSURE

The trash enclosure is located in the main parking lot, and the north wall will serve as a canvas for graphic art to be pixelated in the form of perforations into the pre-rusted metal panel to be enjoyed by all staff and visitors to campus.



TRASH ENCLOSURE - NORTH



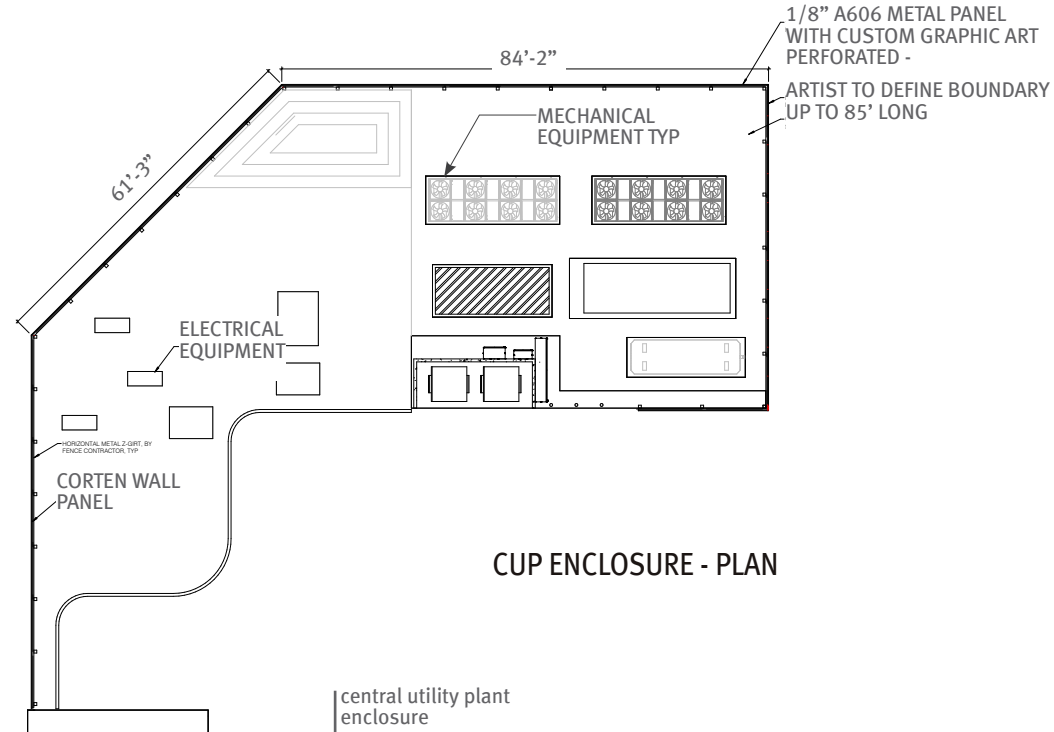
TRASH ENCLOSURE - NORTH



TRASH ENCLOSURE

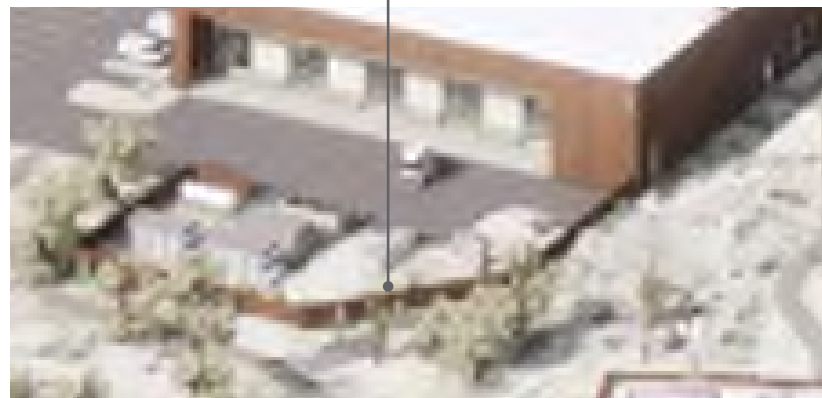
CENTRAL UTILITY PLANT ENCLOSURE

The Central Utility Plant (CUP) surround encloses the main campus mechanical and electrical services for the entire campus. Similar to the three major buildings and the small structures on campus, the CUP is wrapped in a pre-rusted metal panel and will serve as a canvas for inspired graphic art to be pixelated in the form of perforations. The art will be enjoyed by pedestrians and vehicles as they traverse to the Fleet Maintenance building.



1/8" A606 METAL PANEL WITH CUSTOM GRAPHIC ART PERFORATED -
ARTIST TO DEFINE BOUNDARY UP TO 85' LONG

CUP ENCLOSURE

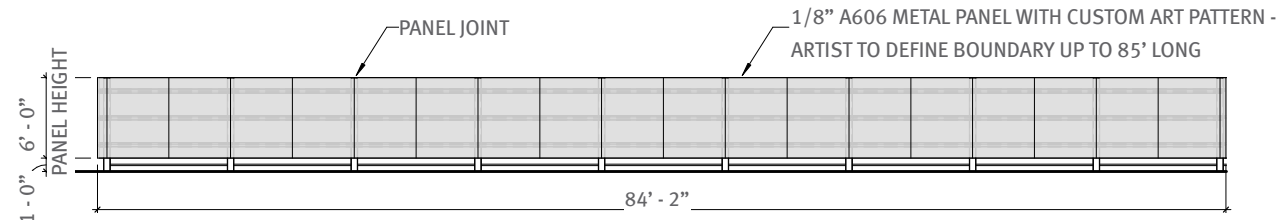


central utility plant enclosure

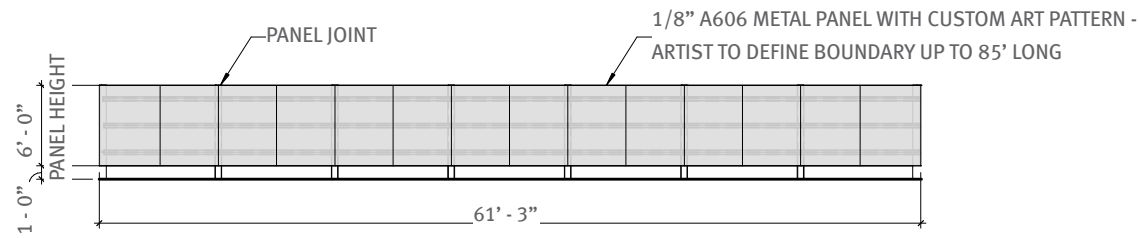
CAMPUS AXONOMETRIC

CENTRAL UTILITY PLANT ENCLOSURE

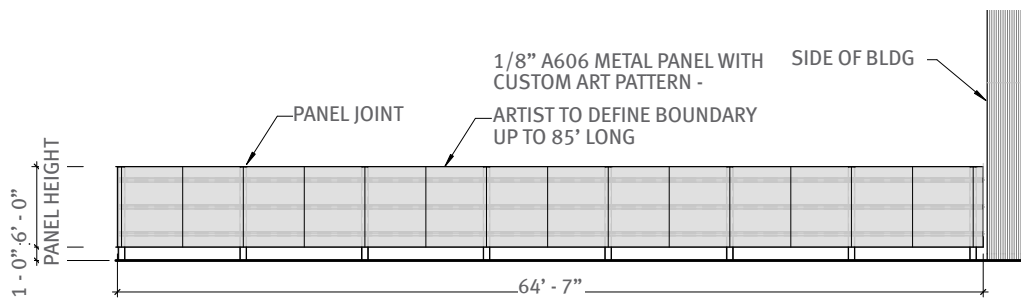
The Central Utility Plant (CUP) enclosure houses the main campus mechanical and electrical services for the entire campus. The enclosure is wrapped in a pre-rusted metal panel and will serve as a canvas for inspired graphic art to be pixelated in the form of perforations. The art will be enjoyed by pedestrians and vehicles as they traverse to the Fleet Maintenance building. The artist can choose the exact location of the art, allowing portions to wrap and continue around to adjacent walls.



CUP ENCLOSURE - NORTH



CUP ENCLOSURE - EAST



CUP ENCLOSURE - WEST

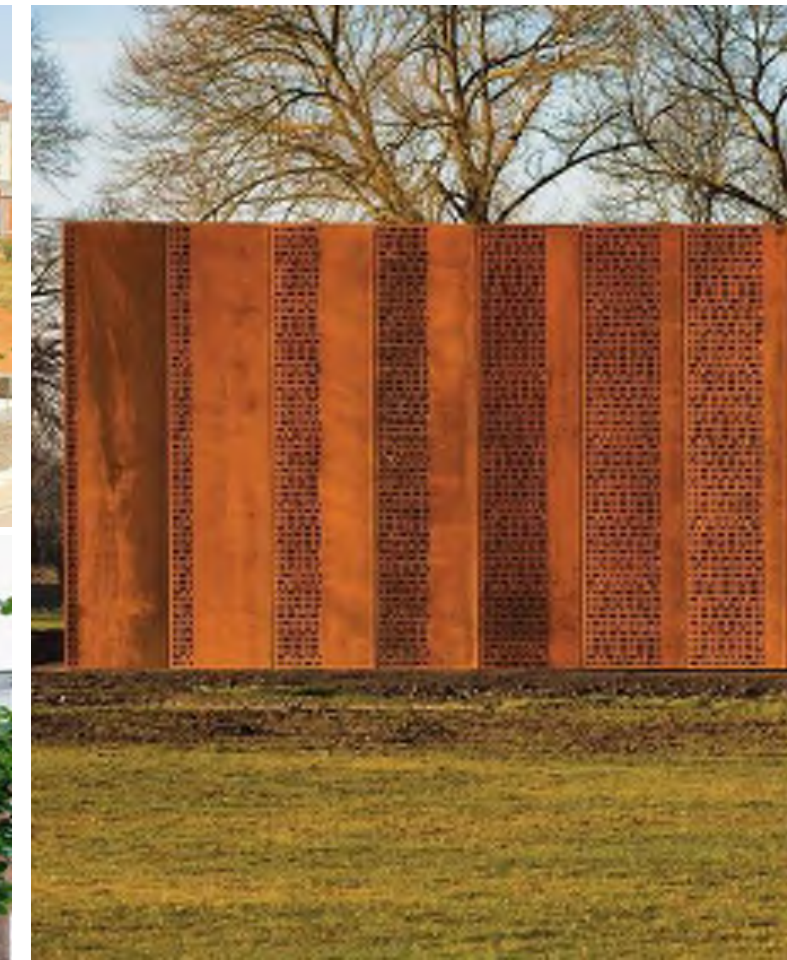
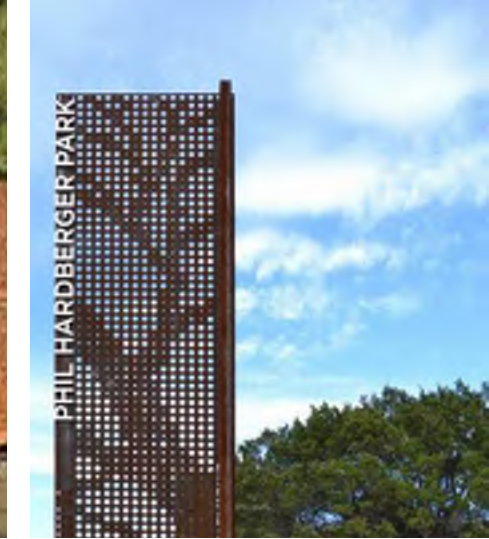
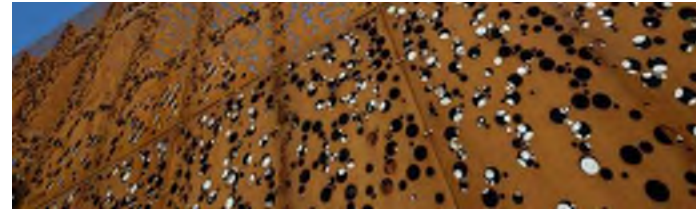


1/8" A606 METAL PANEL WITH CUSTOM GRAPHIC ART PERFORATED -
ARTIST TO DEFINE BOUNDARY UP TO 85' LONG

CUP ENCLOSURE

PERFORATED ART PRECEDENTS

The pixelated graphic art can be abstract, integrative, can change based on where it is viewed from, be discoverable, can teach or tell a story.



Additional Areas of Public Art on Campus

AREAS FOR PUBLIC ART

There are three major areas for public art to be integrated on campus.



A | HEADQUARTERS LOBBY AND TERRACE

Artist selected

The Headquarters building is the gateway to campus and will contain art in the public lobby and terrace spaces.



B | ENTRY AND SOUTH STREET EDGE SCULPTURAL ELEMENTS

Artist selected

Art will be integrated at the main entry at the north and at the south edge of the site, both to be viewed from public vehicular and pedestrians on Cooley and Talus.



C | SITE STRUCTURES

Current Call for Artists

Three small site structures on campus will have graphic art laser cut and perforated into the rusted Corten metal surrounds

