

02.18.25



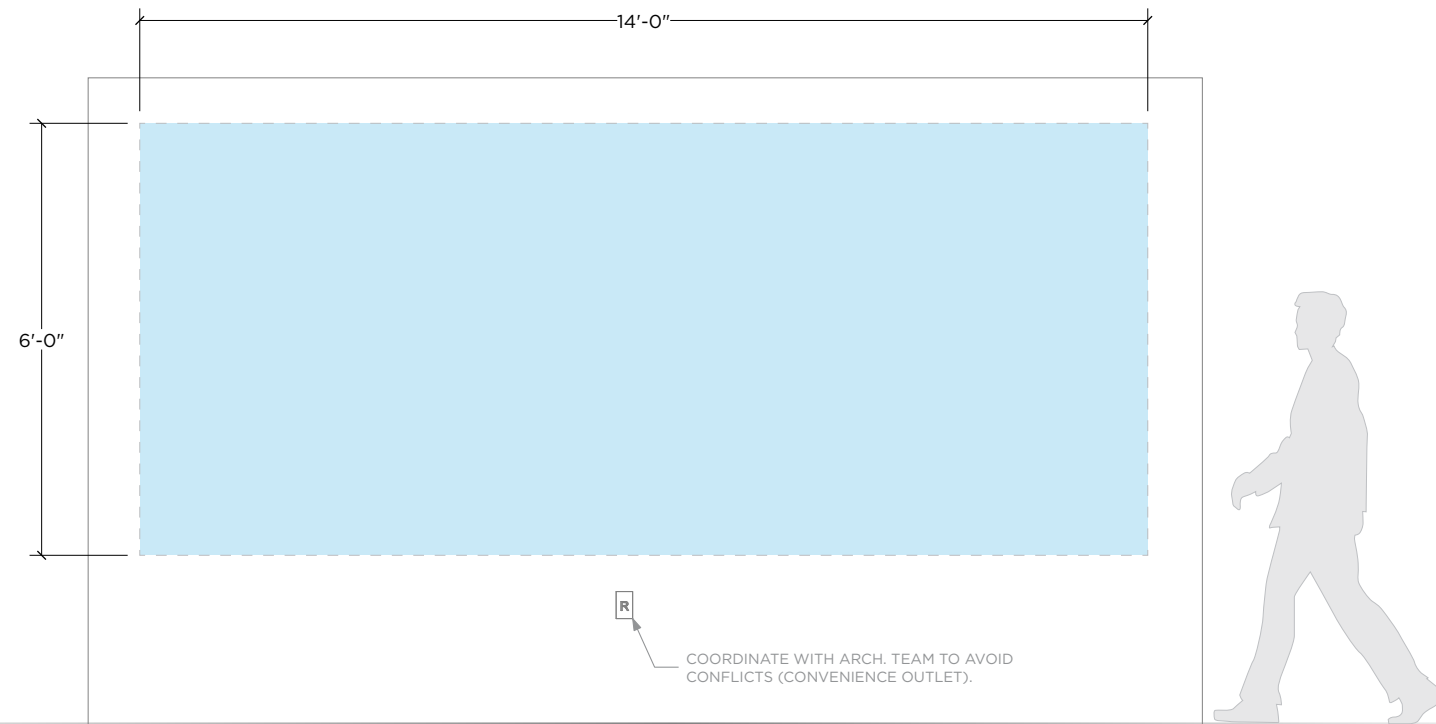
**RFQ/RFP CALL FOR ARTISTS
WALL-BASED ARTWORK**



PUBLIC ART PROGRAM AT NEW HIGHMARK STADIUM

100-A1

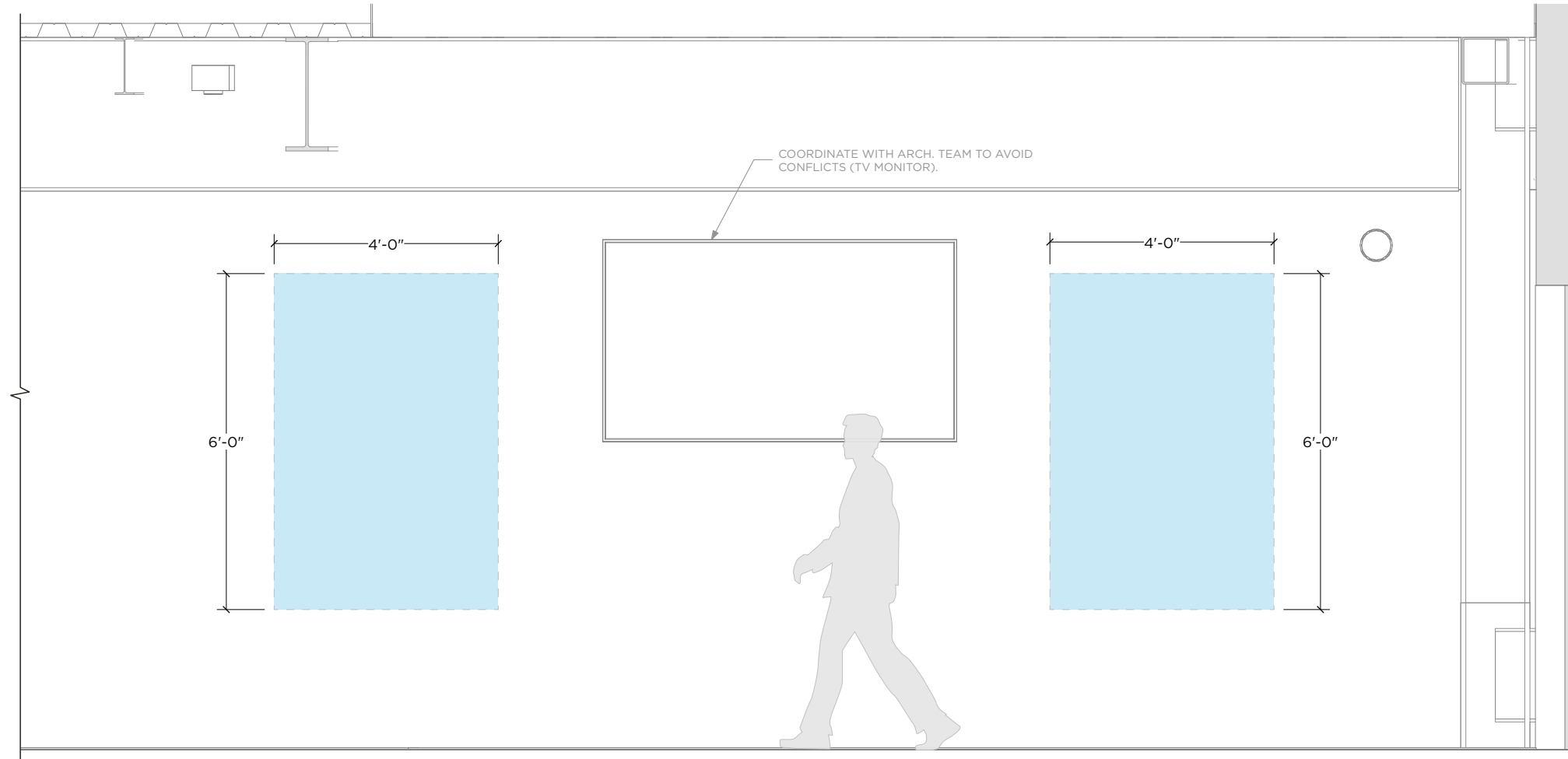
Artwork type: Wall-based (TBD electrical/data)



A CONTEXT ELEVATION
SCALE: 3/8" = 1'-0"

100-A5

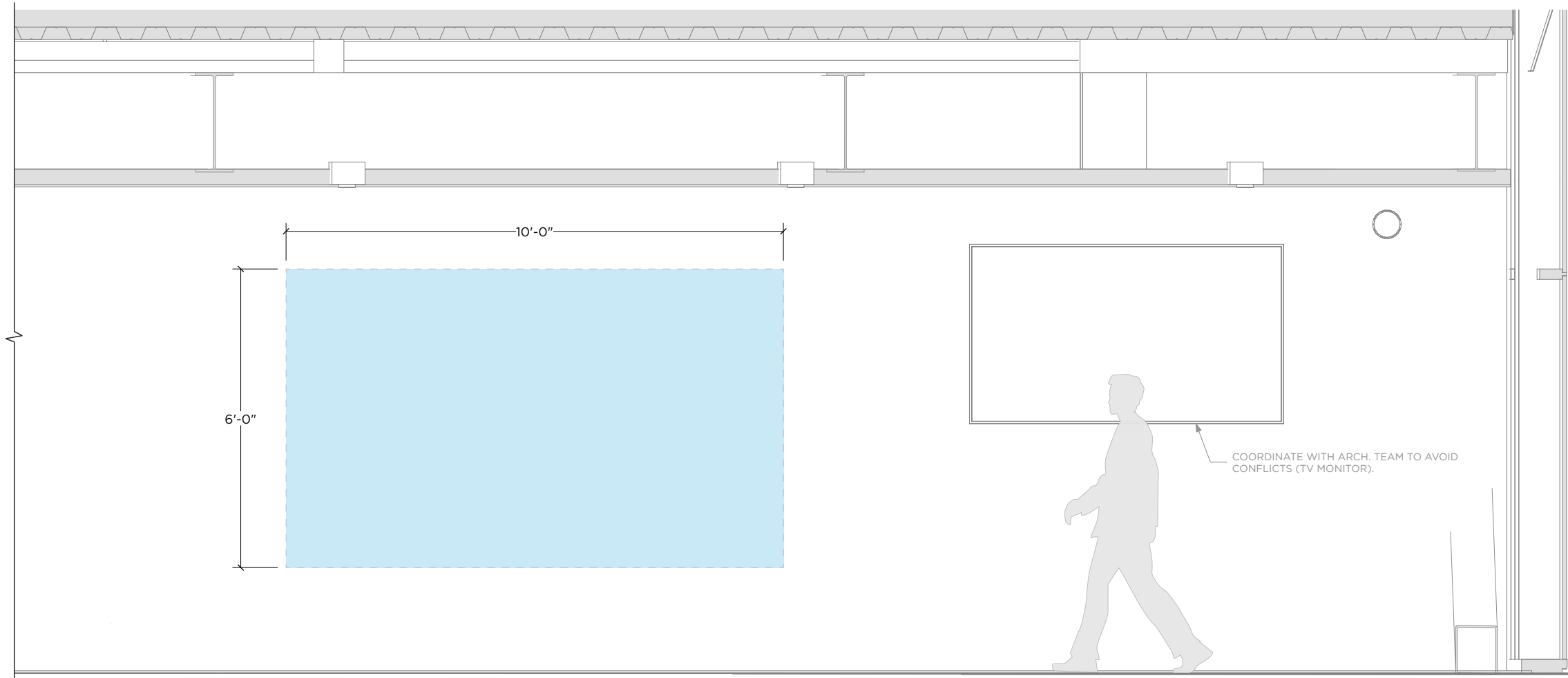
Artwork type: Wall-based



A CONTEXT ELEVATION
SCALE: 3/8" = 1'-0"

100-A6

Artwork type: Wall-based



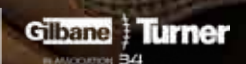
A CONTEXT ELEVATION
SCALE: 3/8" = 1'-0"

3D VISUALIZATION

FOUNDER'S CLUB 458

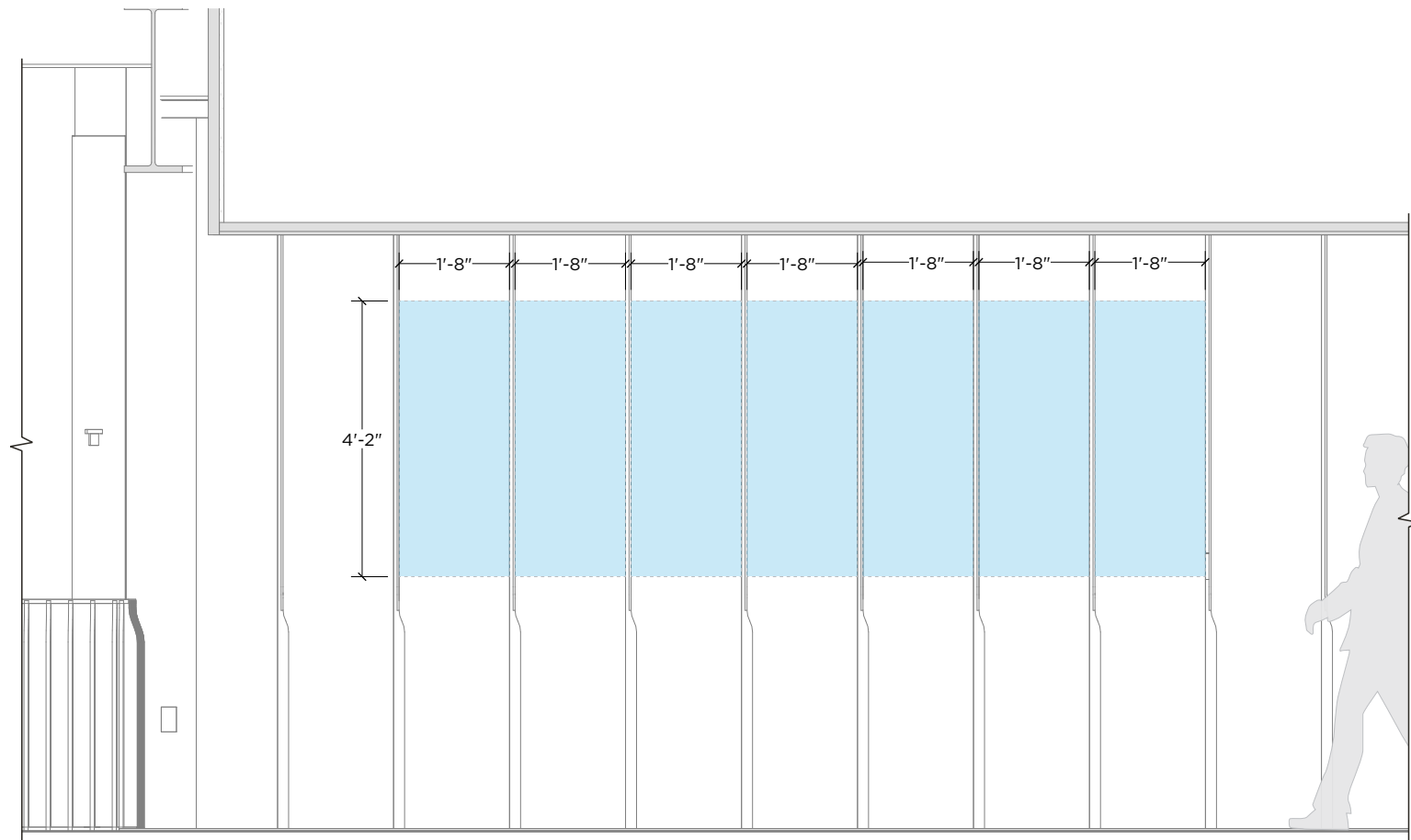


DISCLAIMER | TO ENSURE PROPER COORDINATION, OWNER TO KEEP ARCH. TEAM AWARE OF ANY DEVELOPMENTS



FC458-A1

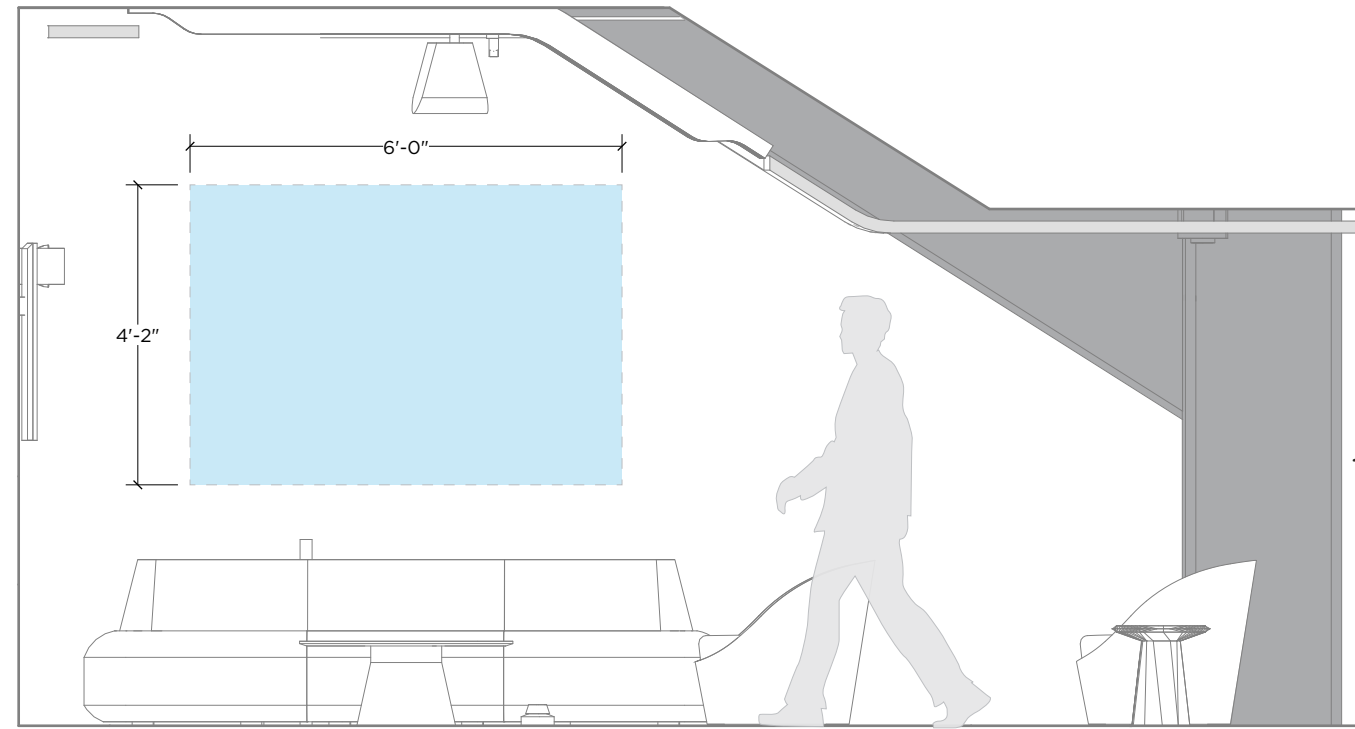
Artwork type: Wall-based



A CONTEXT ELEVATION
SCALE: 3/8" = 1'-0"

FC458-A2

Artwork type: Wall-based

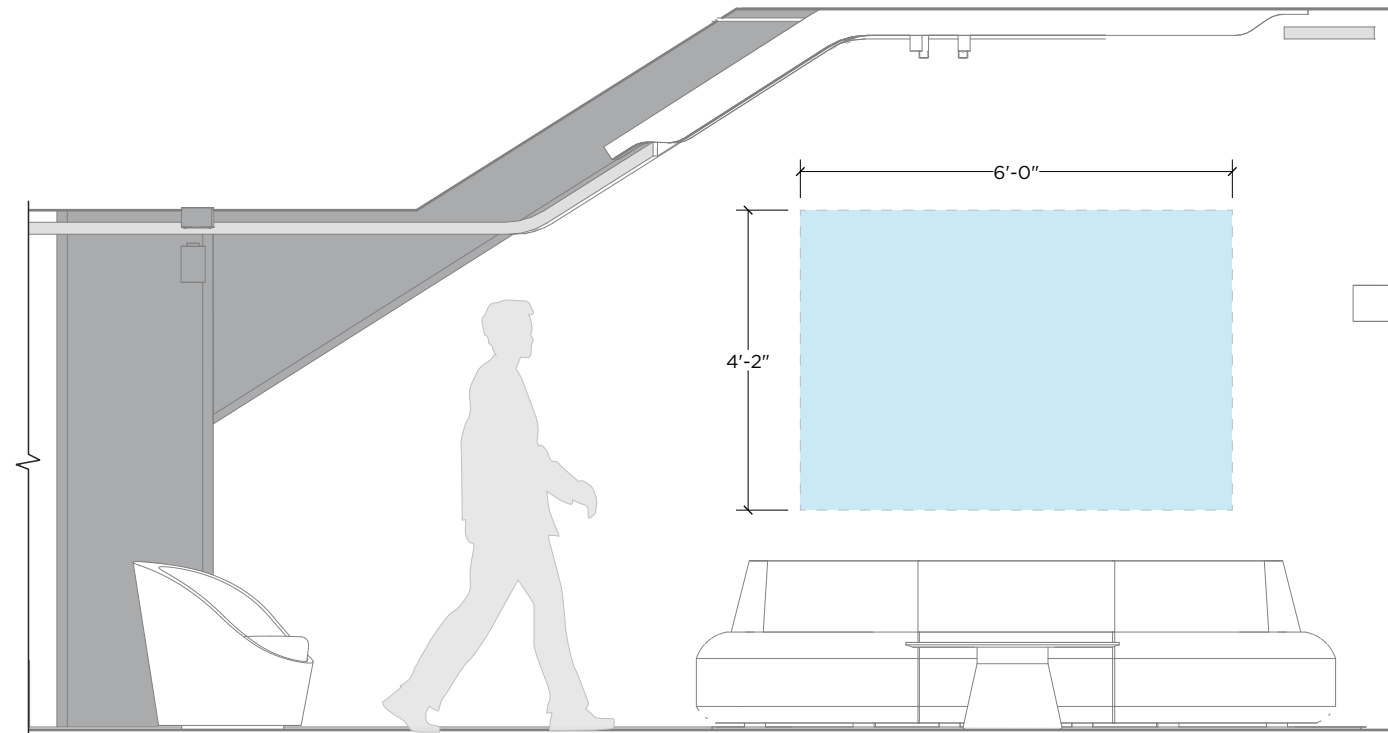


A CONTEXT ELEVATION

SCALE: 3/8" = 1'-0"

FC458-A3

Artwork type: Wall-based



A CONTEXT ELEVATION
SCALE: 3/8" = 1'-0"

3D VISUALIZATION
SUITE ATRIUM



DISCLAIMER | TO ENSURE PROPER COORDINATION, OWNER TO KEEP ARCH. TEAM AWARE OF ANY DEVELOPMENTS

NEW HIGHMARK STADIUM | ART PROGRAM

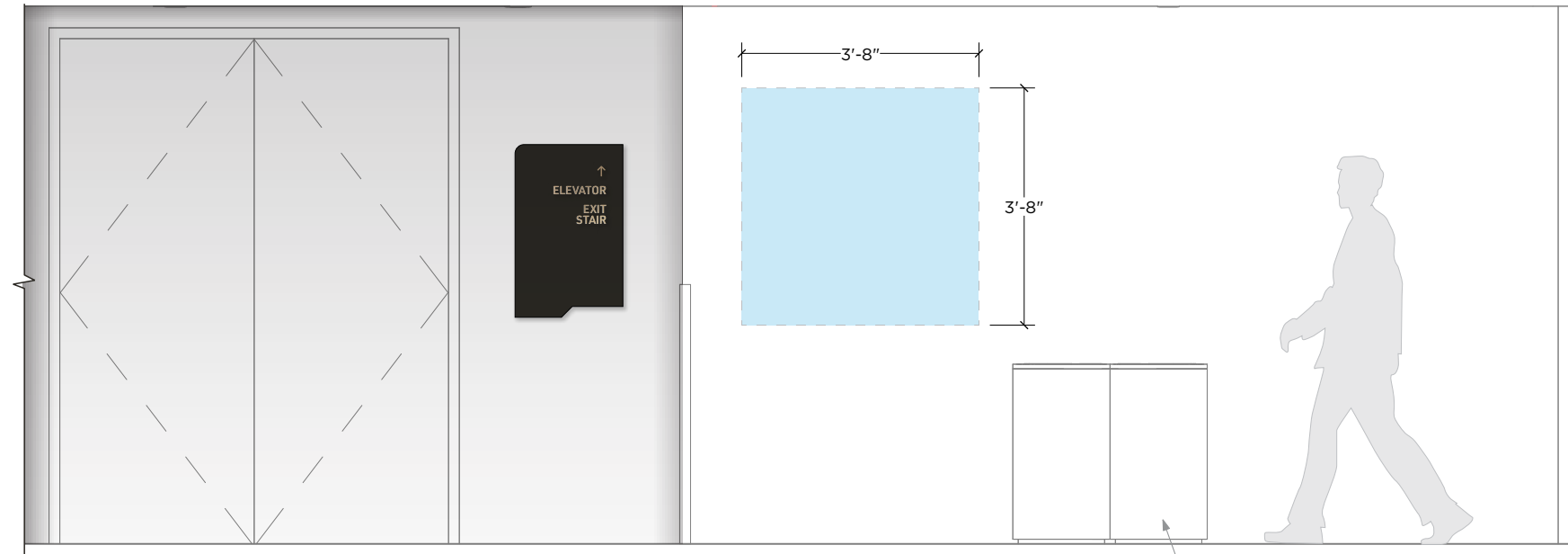
3D VISUALIZATION
SUITE ATRIUM



DISCLAIMER | TO ENSURE PROPER COORDINATION, OWNER TO KEEP ARCH. TEAM AWARE OF ANY DEVELOPMENTS

SL-A2

Artwork type: Wall-based

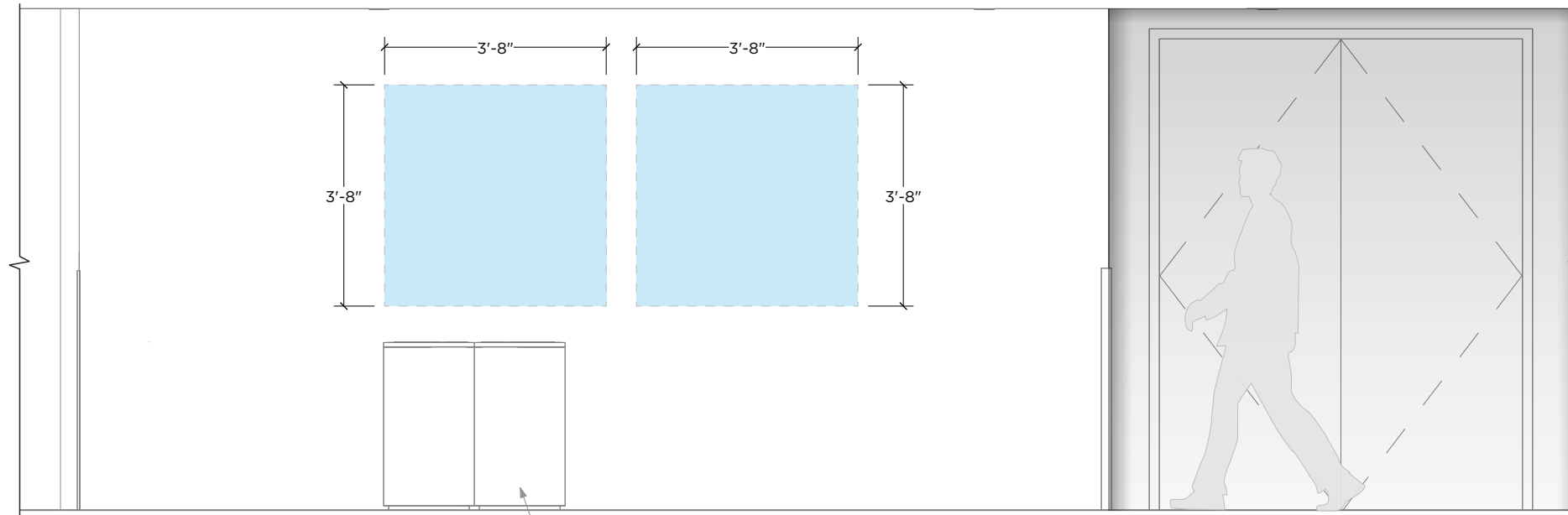


A CONTEXT ELEVATION
SCALE: 3/8" = 1'-0"

COORDINATE WITH ARCH. TEAM TO AVOID CONFLICTS (TRASH CANS).

SL-A3

Artwork type: Wall-based

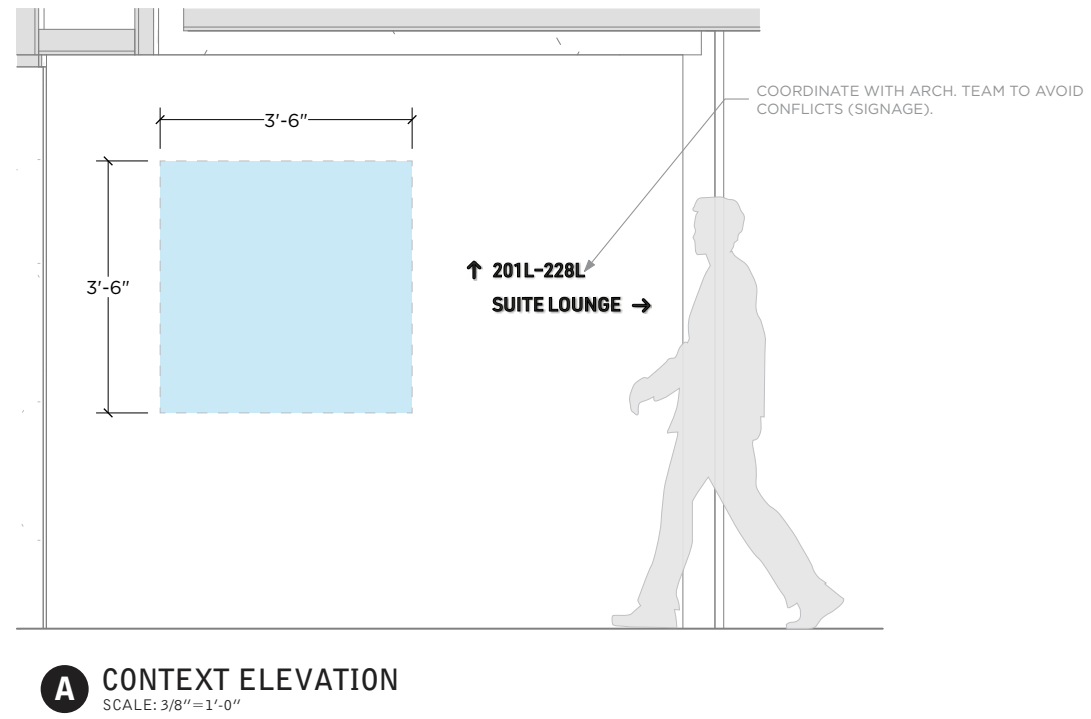


A CONTEXT ELEVATION
SCALE: 3/8"=1'-0"

COORDINATE WITH ARCH. TEAM TO AVOID
CONFLICTS (TRASH CANS).

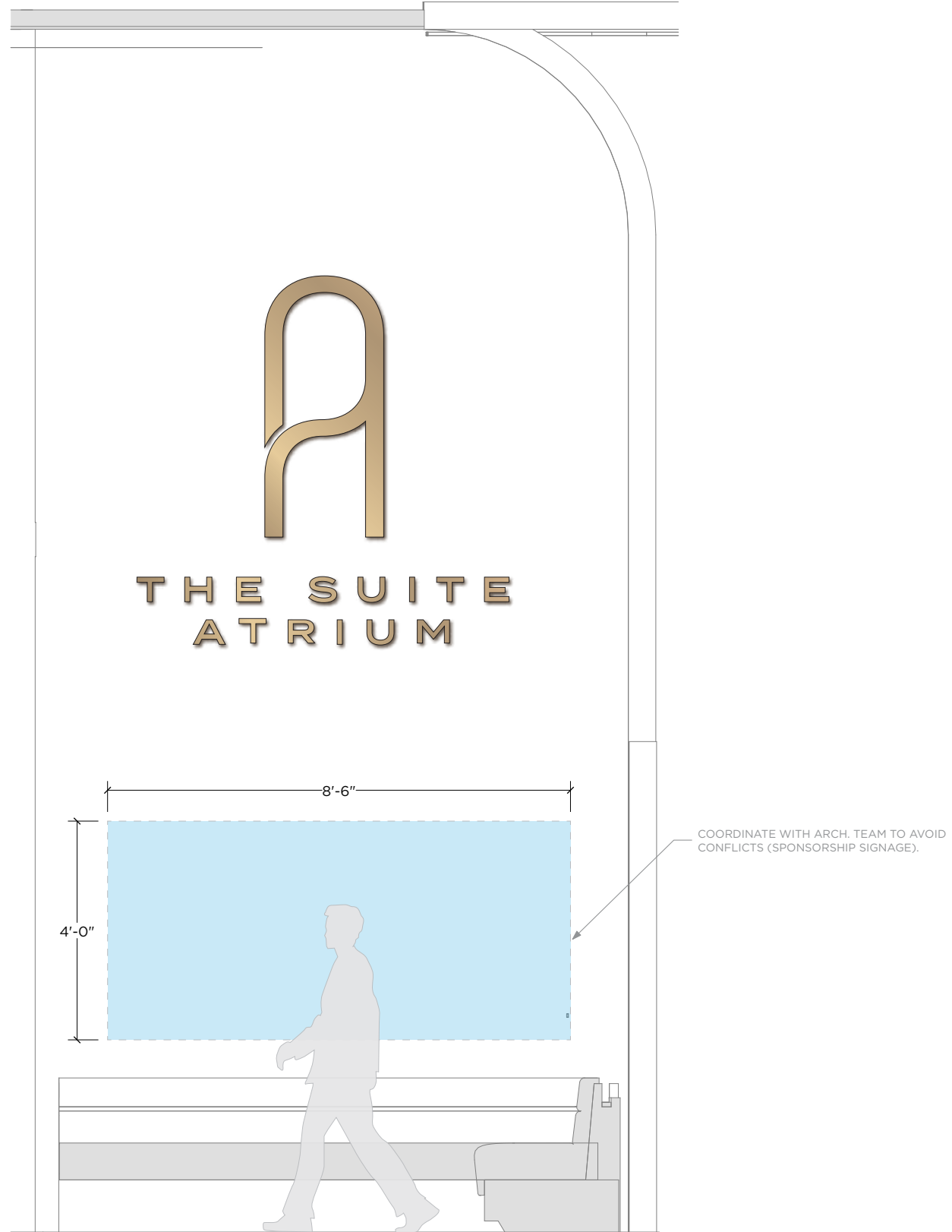
SL-A4

Artwork type: Wall-based



SL-A5

Artwork type: Wall-based

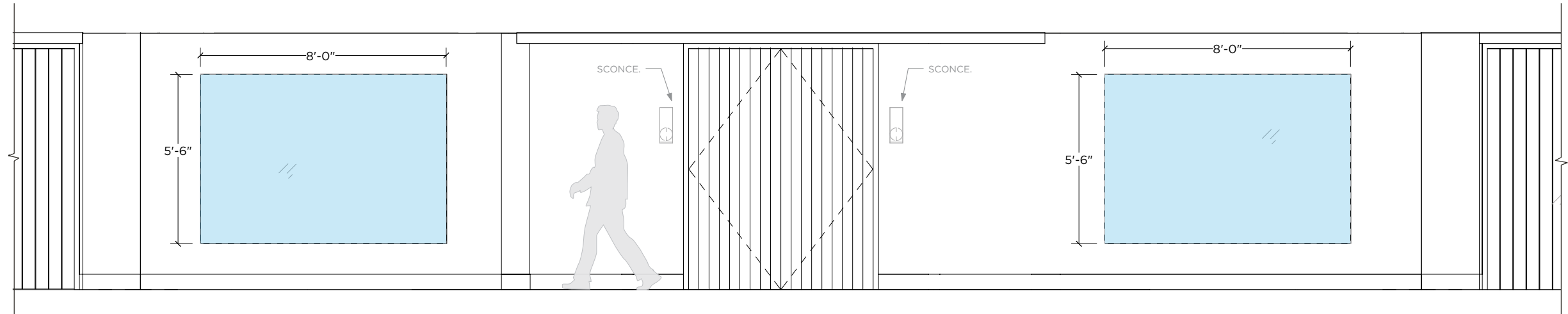


A CONTEXT ELEVATION
SCALE: 3/8" = 1'-0"

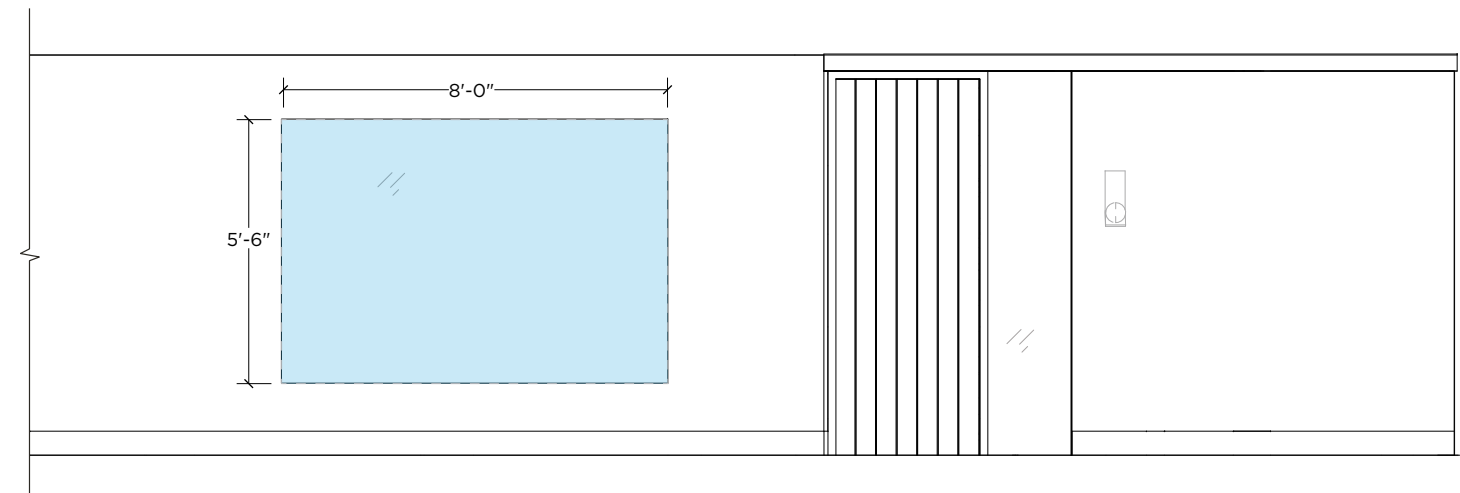
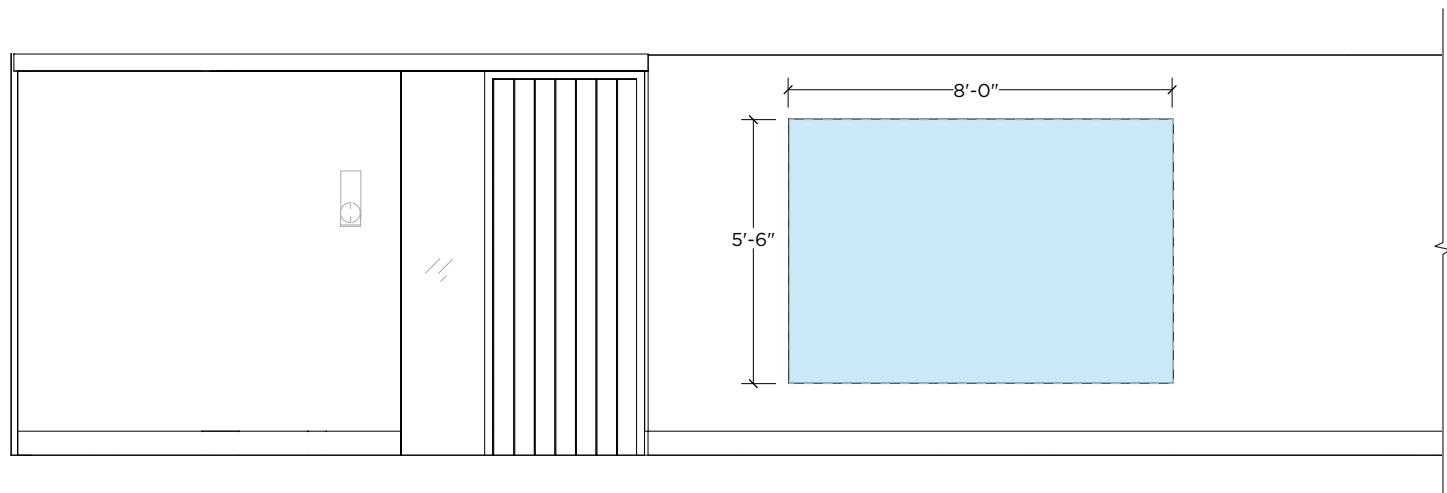
DISCLAIMER | TO ENSURE PROPER COORDINATION, OWNER TO KEEP ARCH. TEAM AWARE OF ANY DEVELOPMENTS

SL-A6

Artwork type: Wall-based

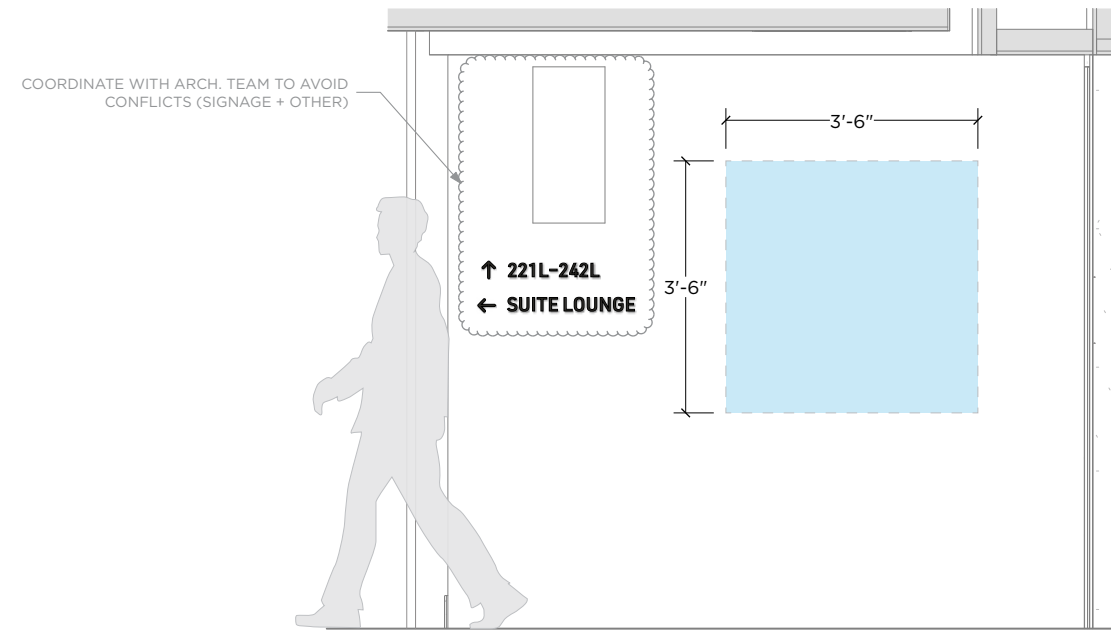


A CONTEXT ELEVATION



SL-A7

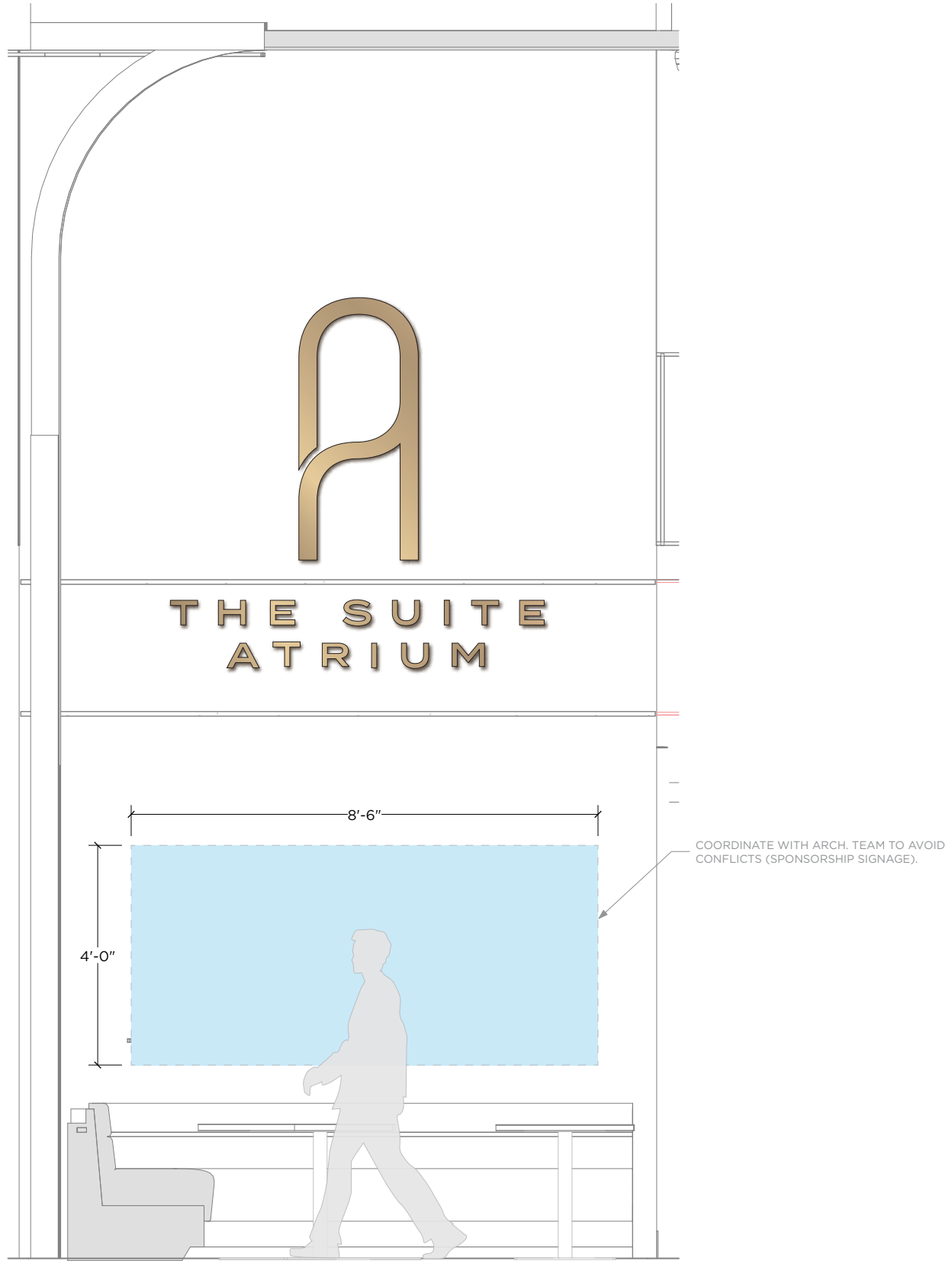
Artwork type: Wall-based



A CONTEXT ELEVATION
SCALE: 3/8" = 1'-0"

SL-A8

Artwork type: Wall-based

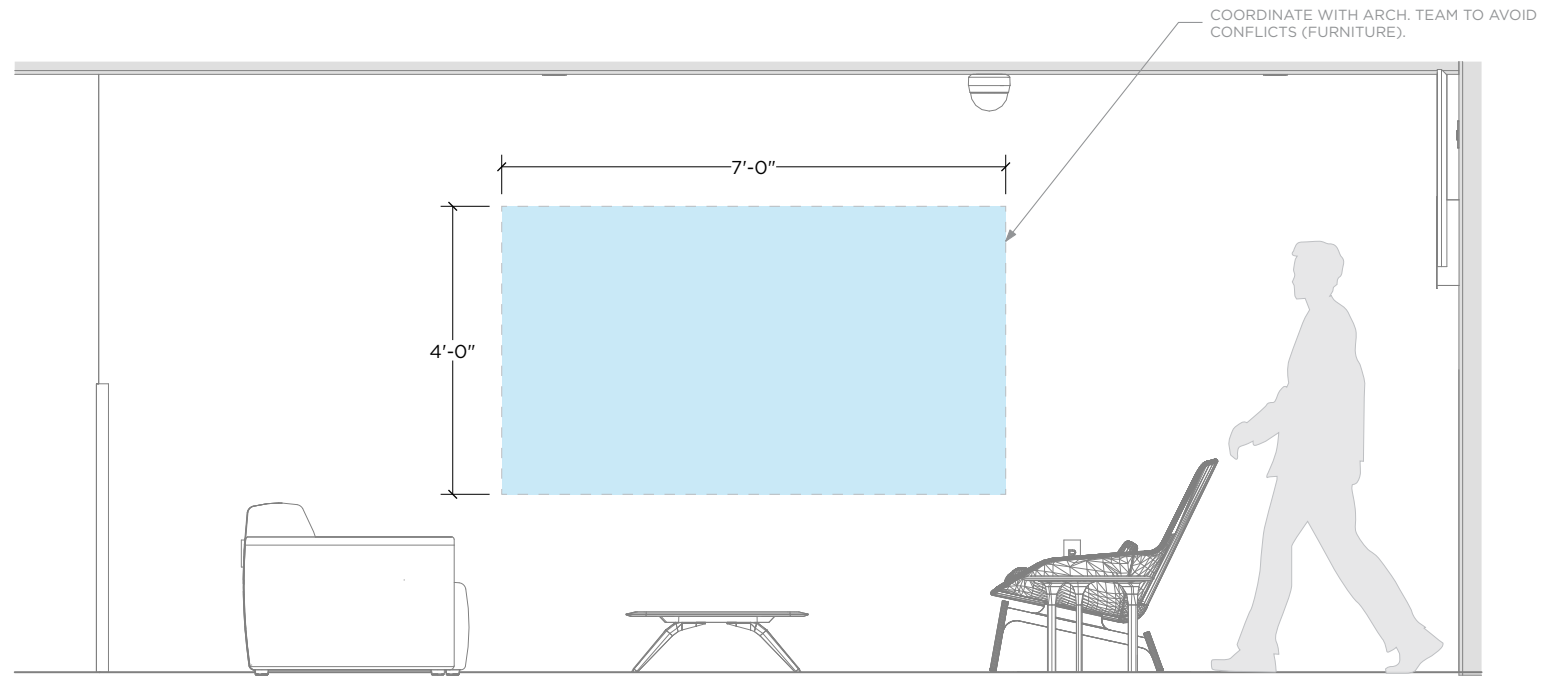


A CONTEXT ELEVATION
SCALE: 3/8"=1'-0"

DISCLAIMER | TO ENSURE PROPER COORDINATION, OWNER TO KEEP ARCH. TEAM AWARE OF ANY DEVELOPMENTS

SL-A9

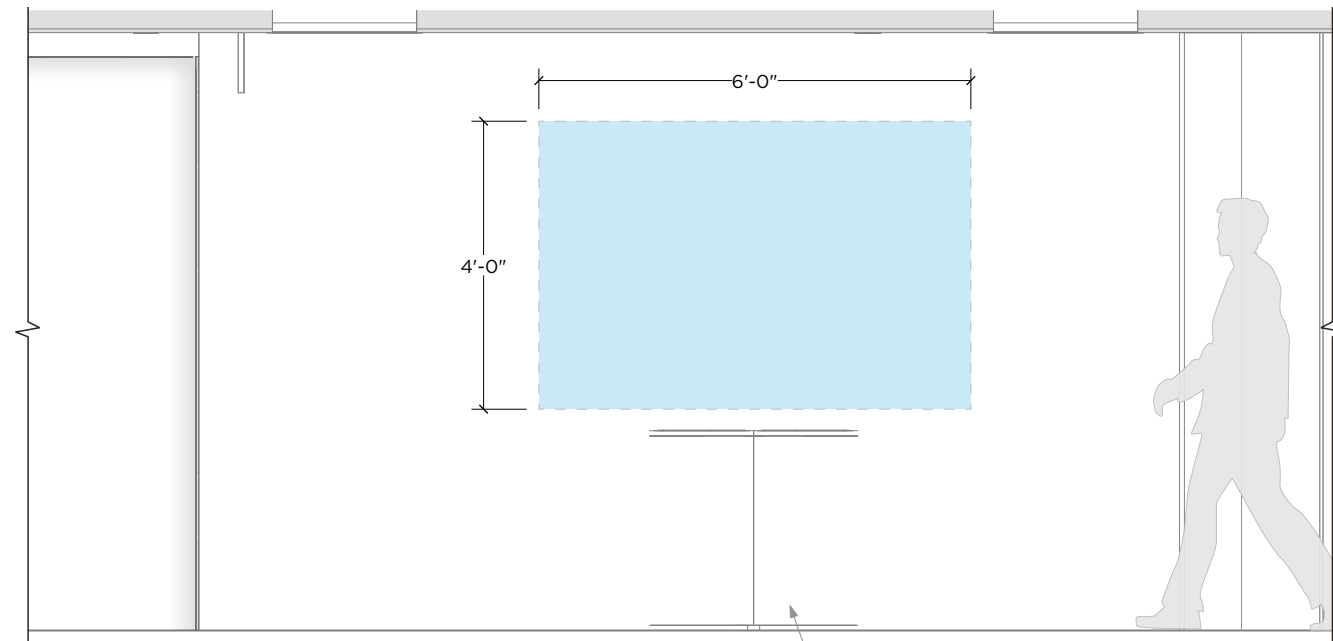
Artwork type: Wall-based



A CONTEXT ELEVATION
SCALE: 3/8" = 1'-0"

SL-A10

Artwork type: Wall-based

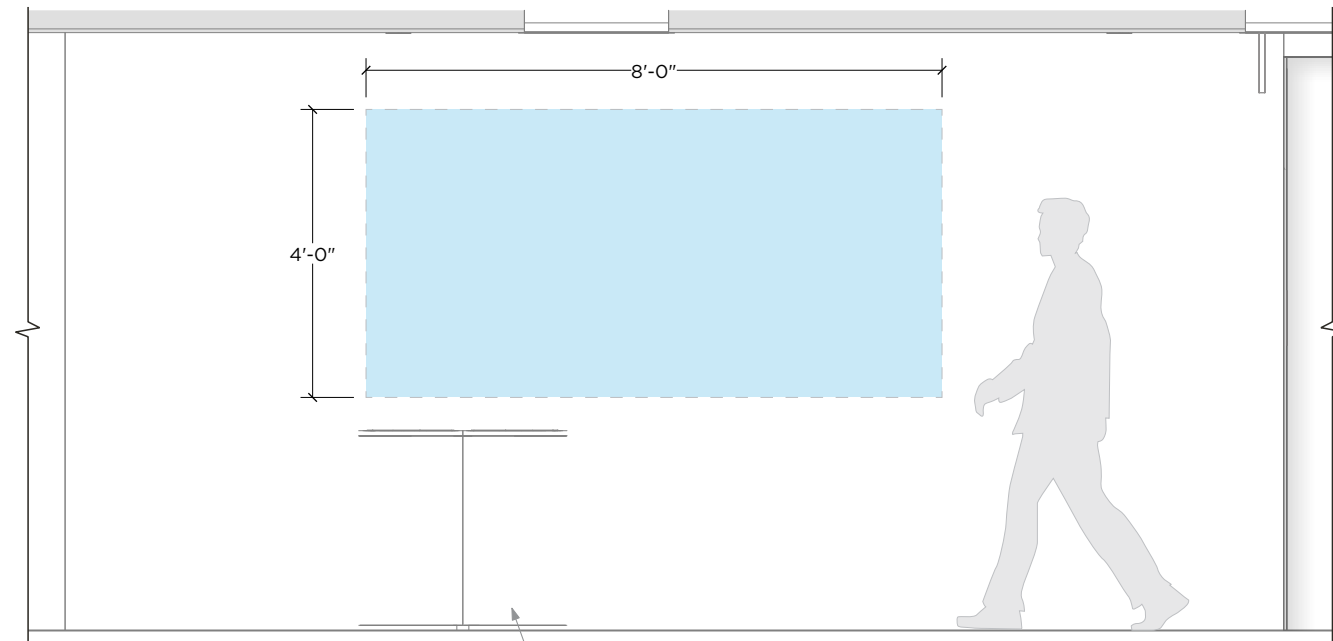


A CONTEXT ELEVATION
SCALE: 3/8"=1'-0"

COORDINATE WITH ARCH. TEAM TO AVOID CONFLICTS (TRASH CANS).

SL-A11

Artwork type: Wall-based

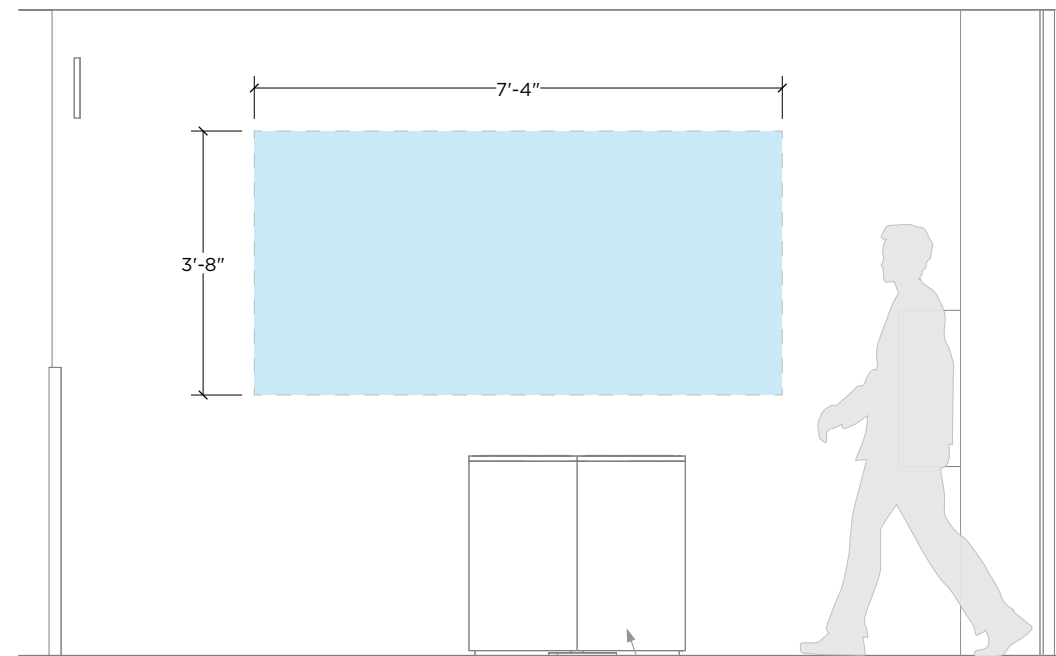


A CONTEXT ELEVATION
SCALE: 3/8"=1'-0"

COORDINATE WITH ARCH. TEAM TO AVOID CONFLICTS (TRASH CANS).

SU-A2

Artwork type: Wall-based

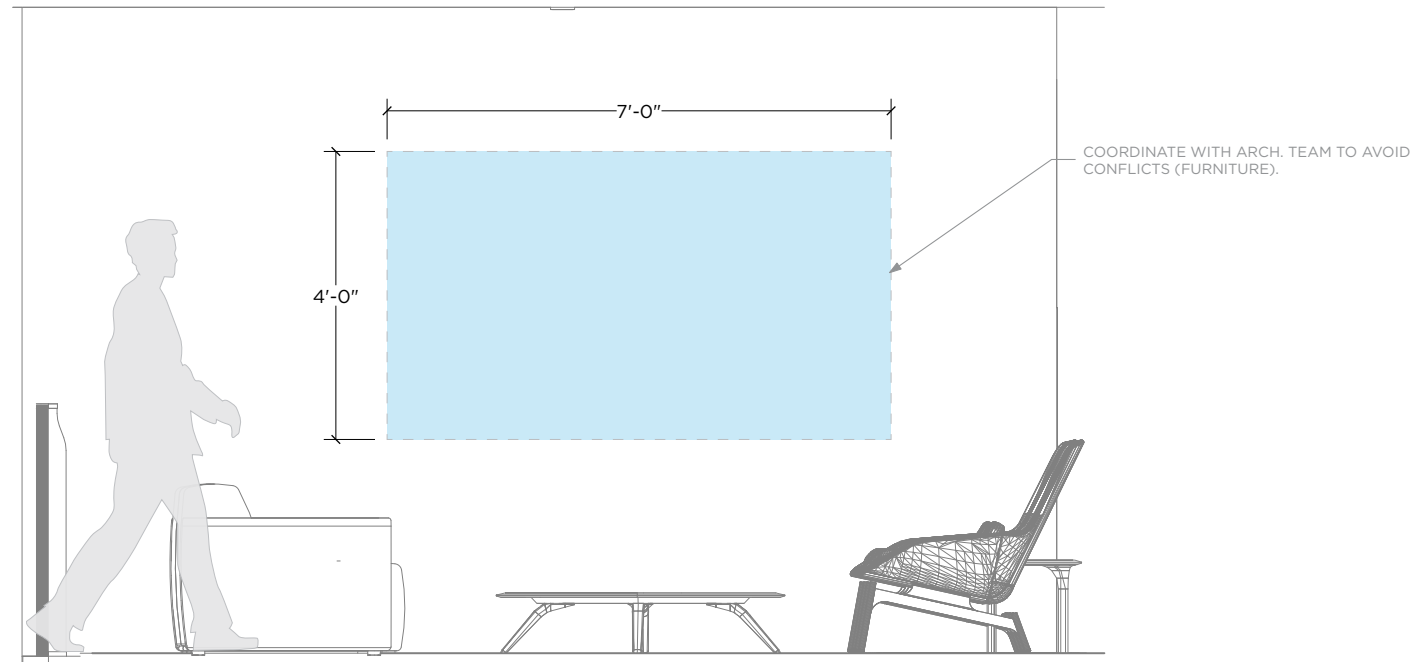


A CONTEXT ELEVATION
SCALE: 3/8"=1'-0"

COORDINATE WITH ARCH. TEAM TO AVOID CONFLICTS (TRASH CANS).

SU-A5

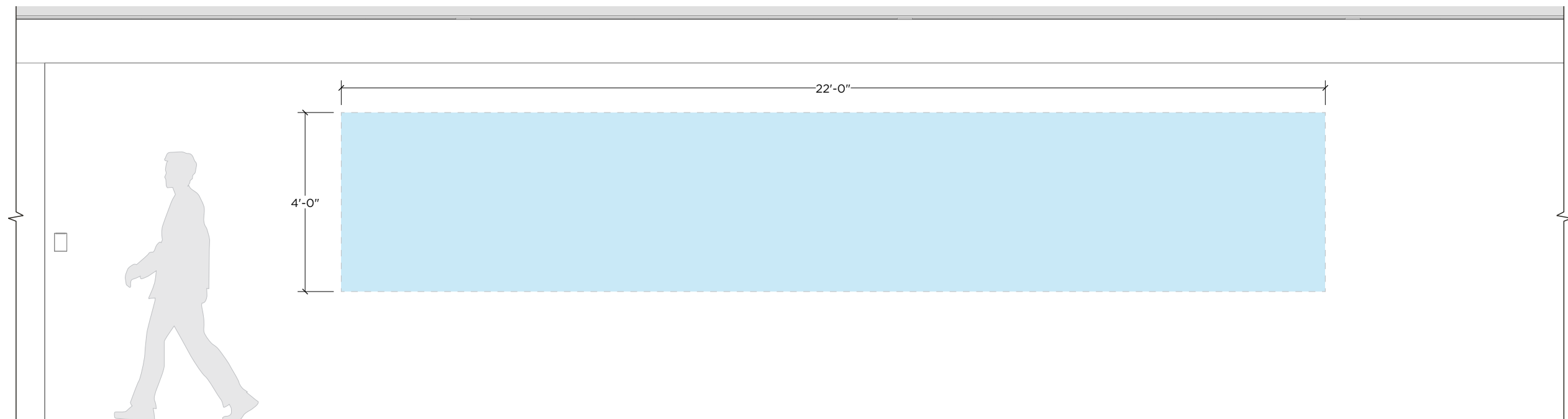
Artwork type: Wall-based



A CONTEXT ELEVATION
SCALE: 3/8" = 1'-0"

SU-A6

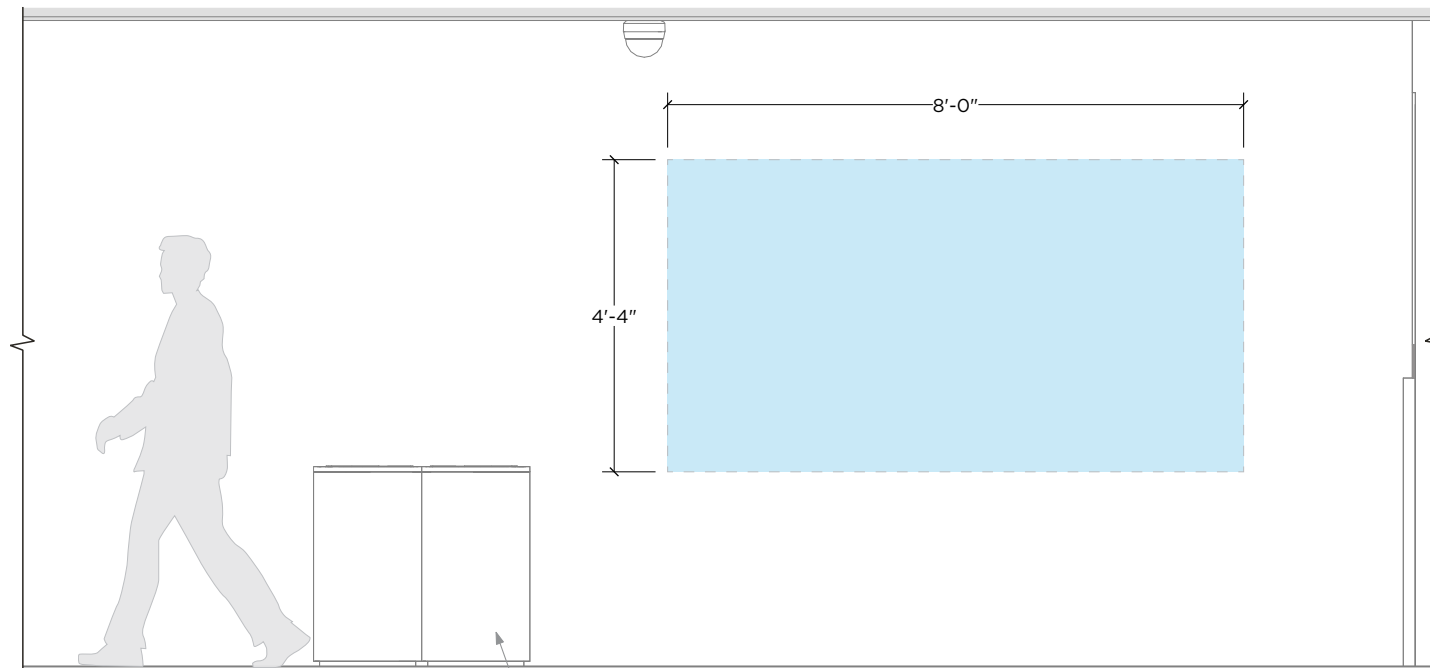
Artwork type: Wall-based



A CONTEXT ELEVATION
SCALE: 3/8" = 1'-0"

SU-A10

Artwork type: Wall-based



A CONTEXT ELEVATION
SCALE: 3/8"=1'-0"

COORDINATE WITH ARCH. TEAM TO AVOID CONFLICTS (TRASH CANS).

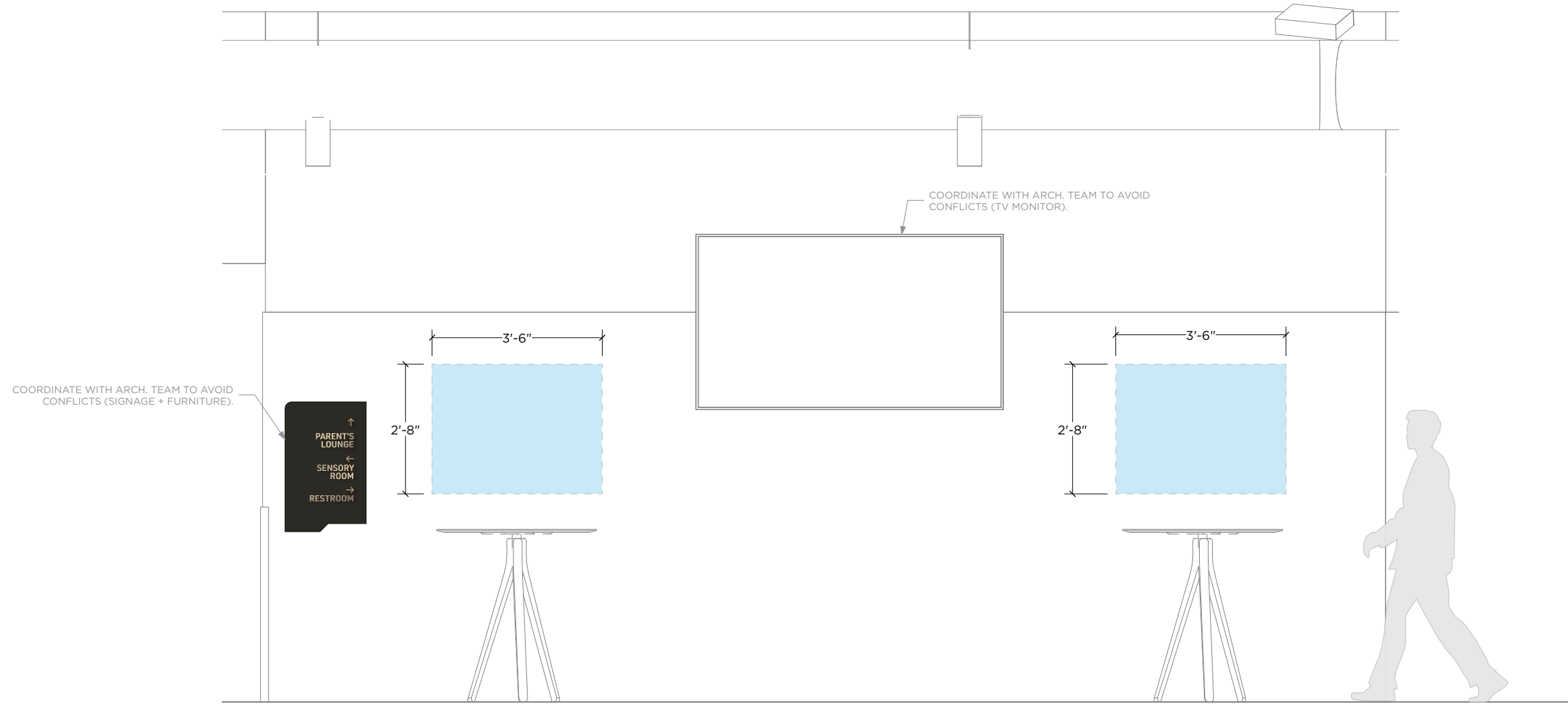
3D VISUALIZATION
EAST CLUB



DISCLAIMER | TO ENSURE PROPER COORDINATION, OWNER TO KEEP ARCH. TEAM AWARE OF ANY DEVELOPMENTS

CL-A1

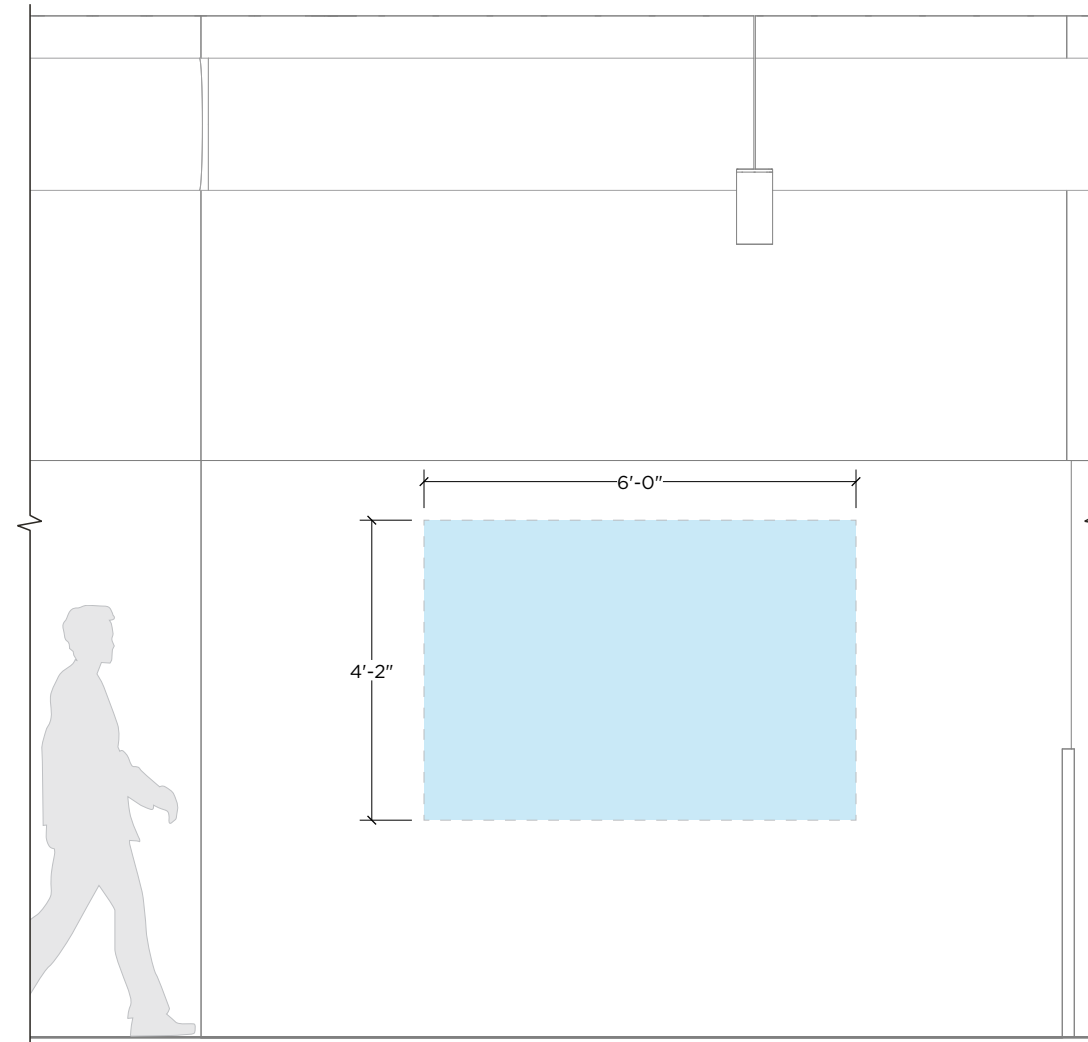
Artwork type: Wall-based



A CONTEXT ELEVATION
SCALE: 3/8" = 1'-0"

CL-A2

Artwork type: Wall-based



A CONTEXT ELEVATION
SCALE: 3/8" = 1'-0"

CL-A4

Artwork type: Wall-based

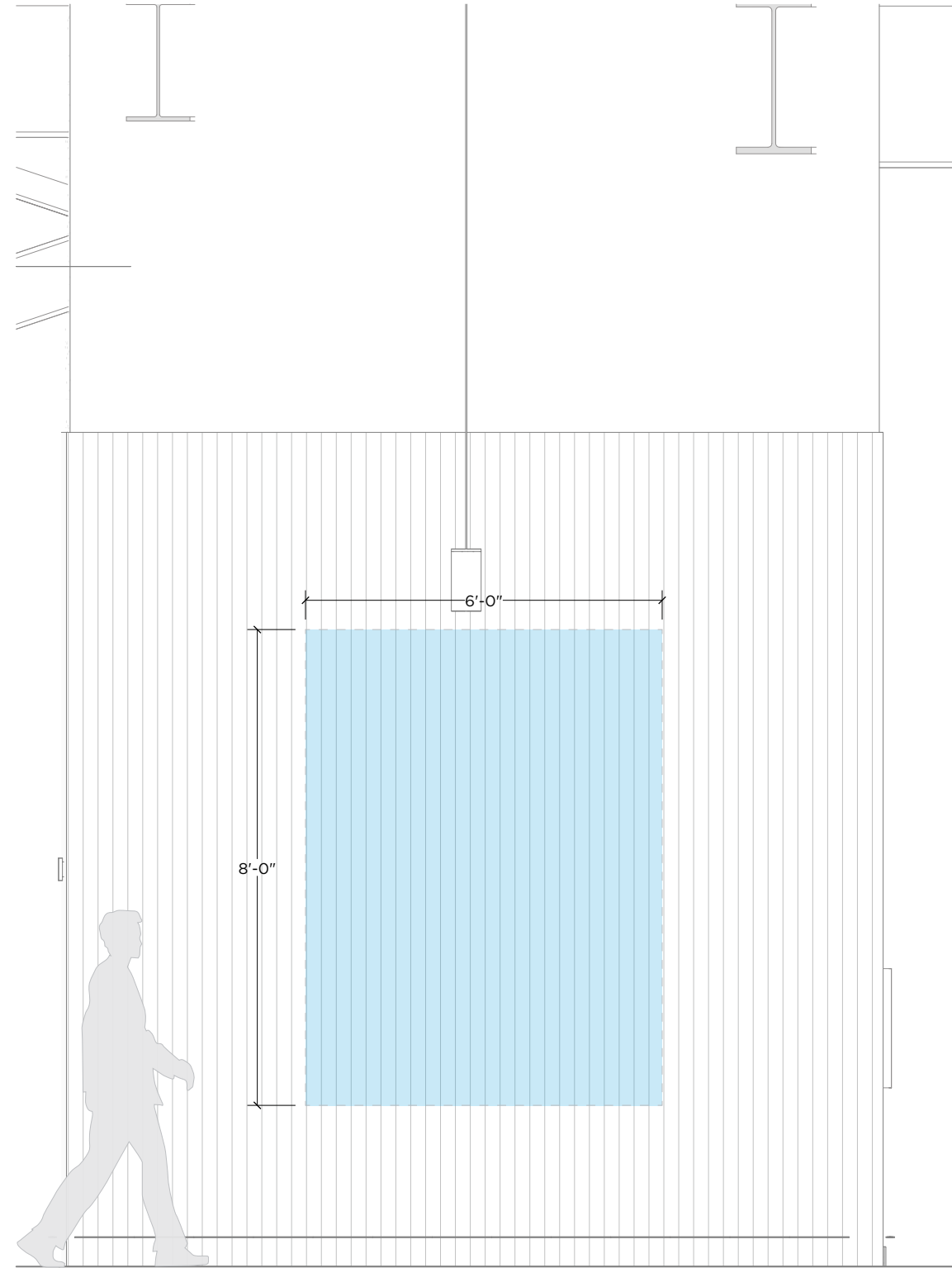


A CONTEXT ELEVATION
SCALE: 3/8"=1'-0"



CL-A5

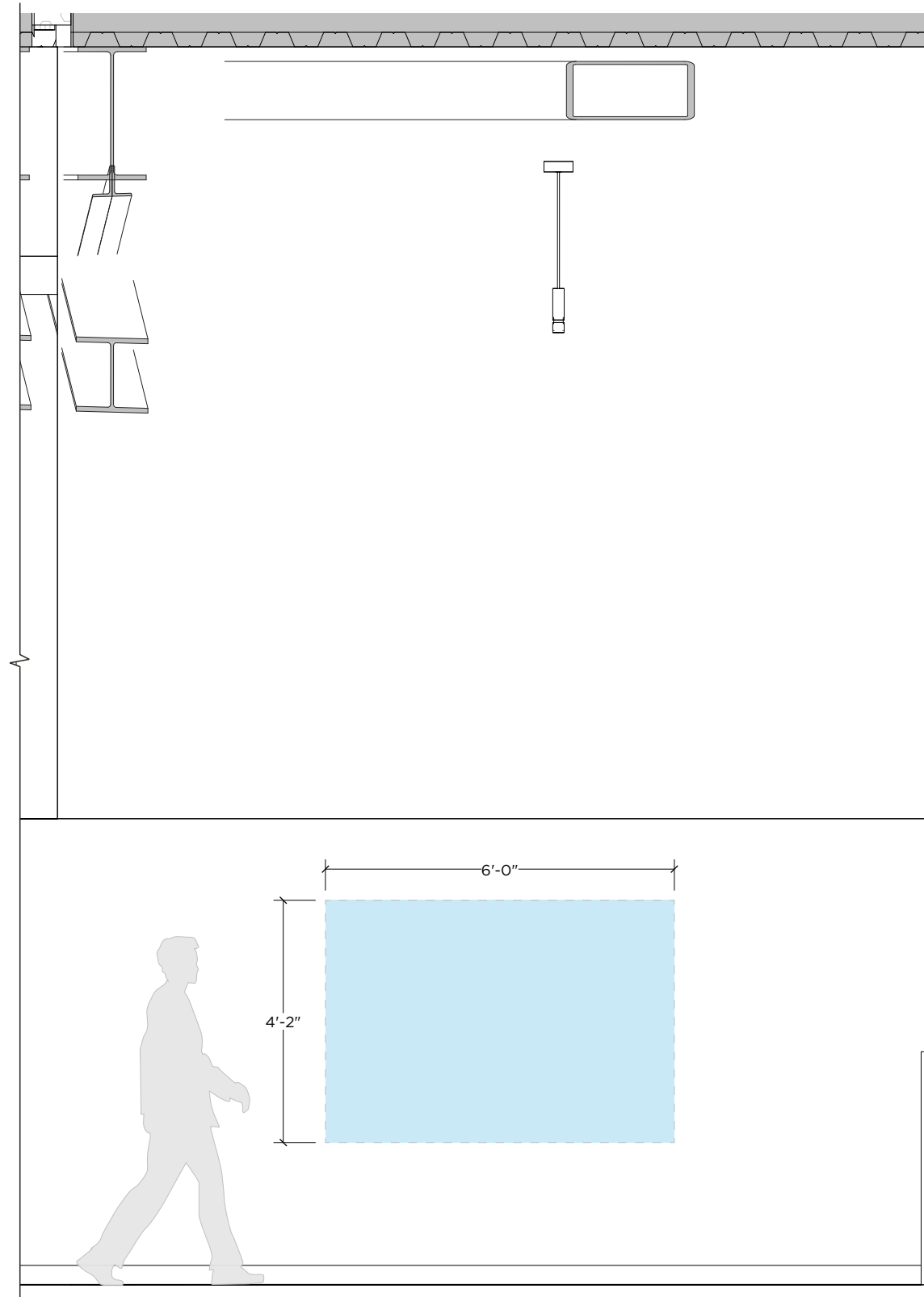
Artwork type: Wall-based



A CONTEXT ELEVATION
SCALE: 3/8" = 1'-0"

CL-A6

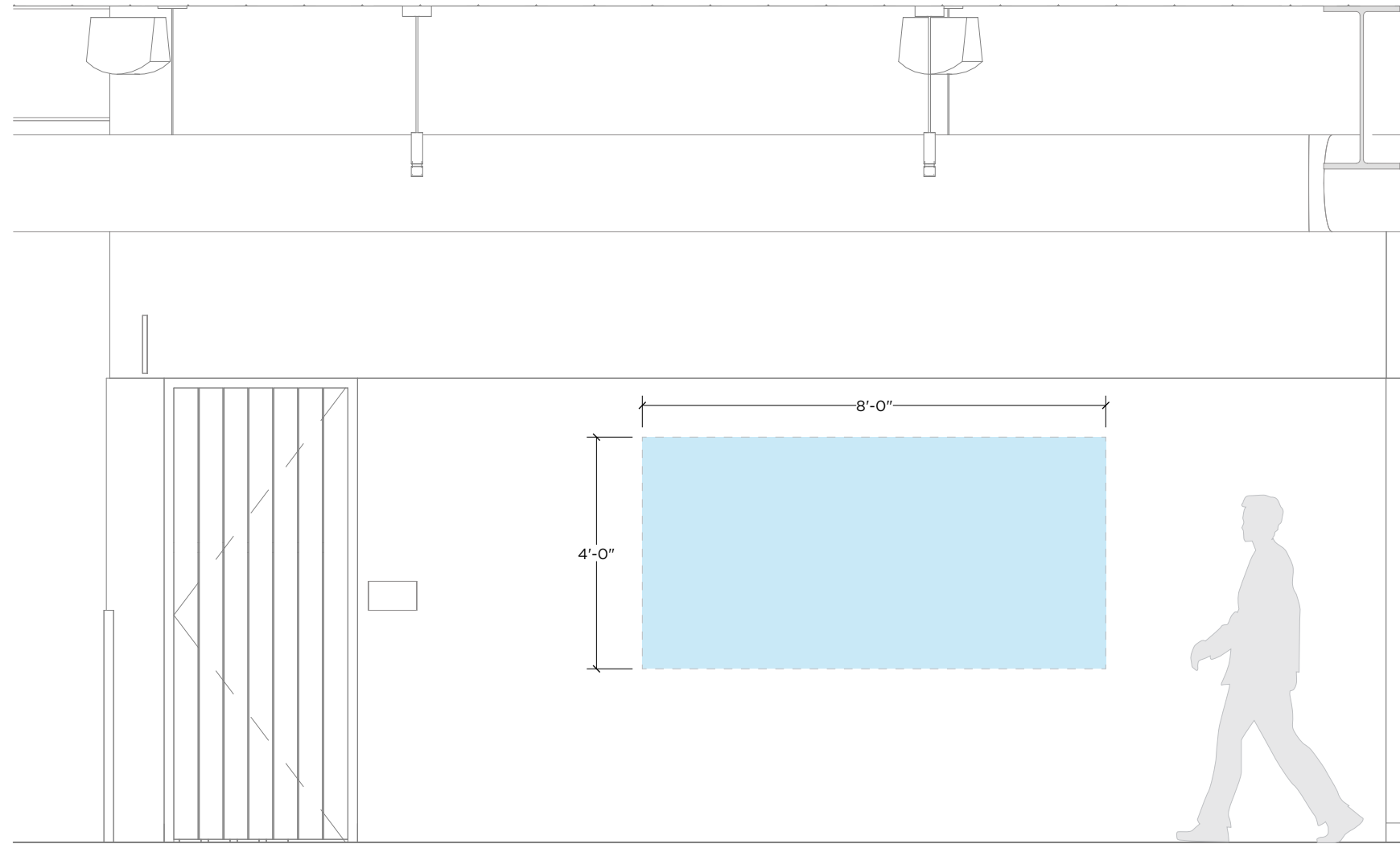
Artwork type: Wall-based



A CONTEXT ELEVATION
SCALE: 3/8"=1'-0"

CU-A1

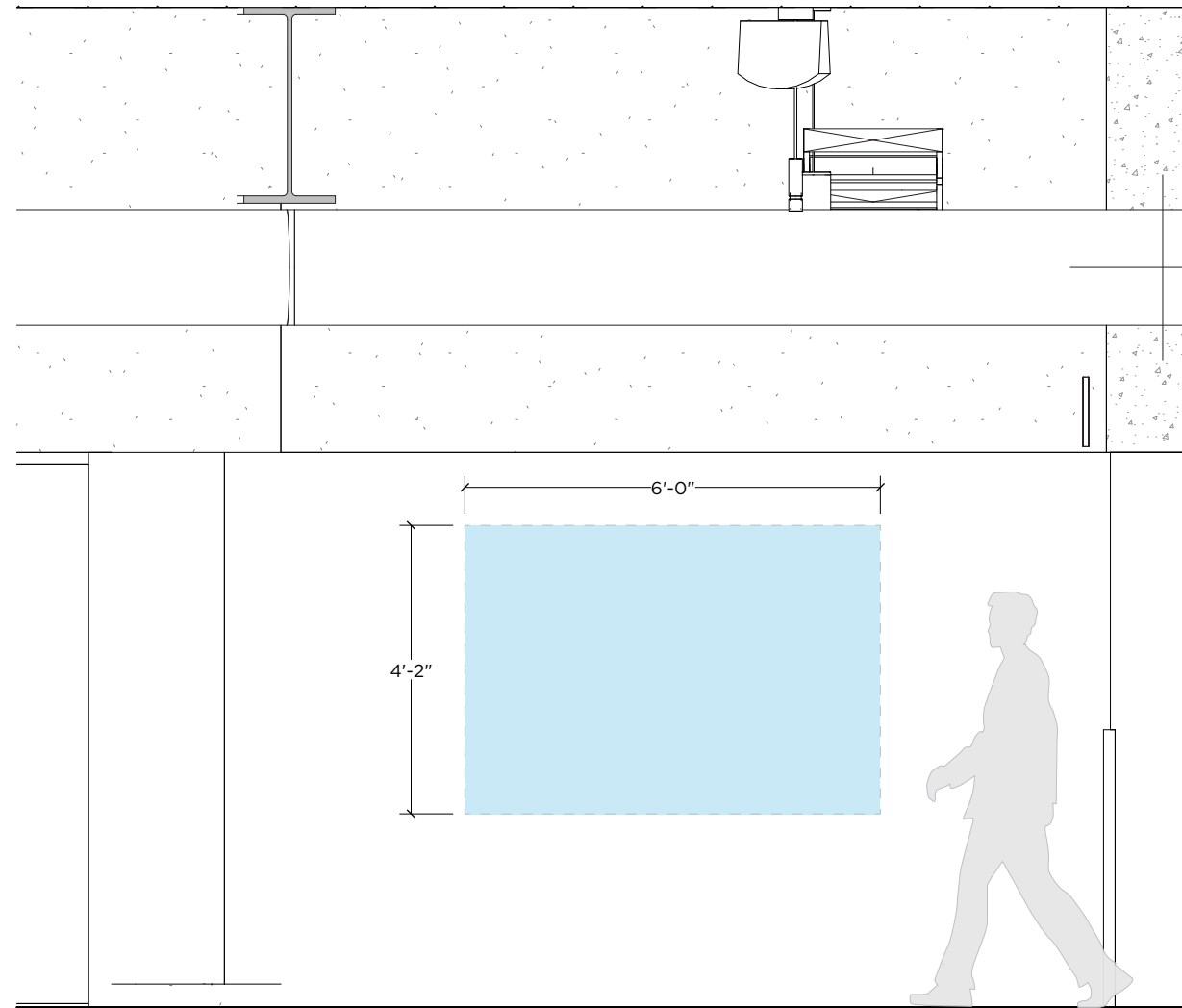
Artwork type: Wall-based



A FRONT DETAIL
SCALE: 3/8"=1'-0"

CU-A2

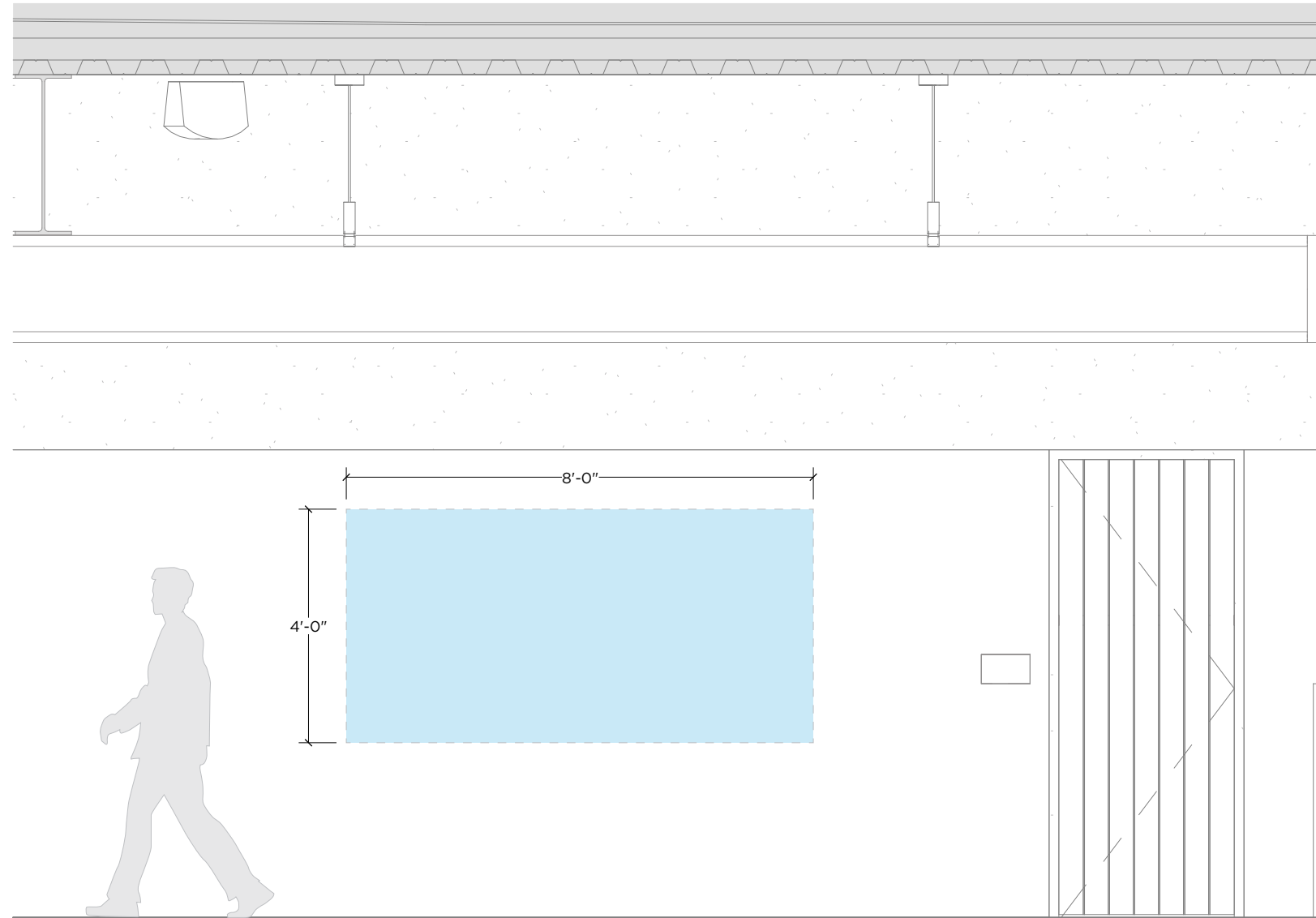
Artwork type: Wall-based



A CONTEXT ELEVATION
SCALE: 3/8" = 1'-0"

CU-A5

Artwork type: Wall-based



A CONTEXT ELEVATION
SCALE: 3/8" = 1'-0"



NEW HIGHMARK STADIUM

For Public Art Program Questions
Contact: stadiumpublicart@gmail.com

POPULOUS
BUFFALO BILLS
NEW STADIUM



Gilbane

Turner

IN ASSOCIATION WITH 34 GROUP

BUILT FOR THE
GAME





HIGHMARK
STADIUM

