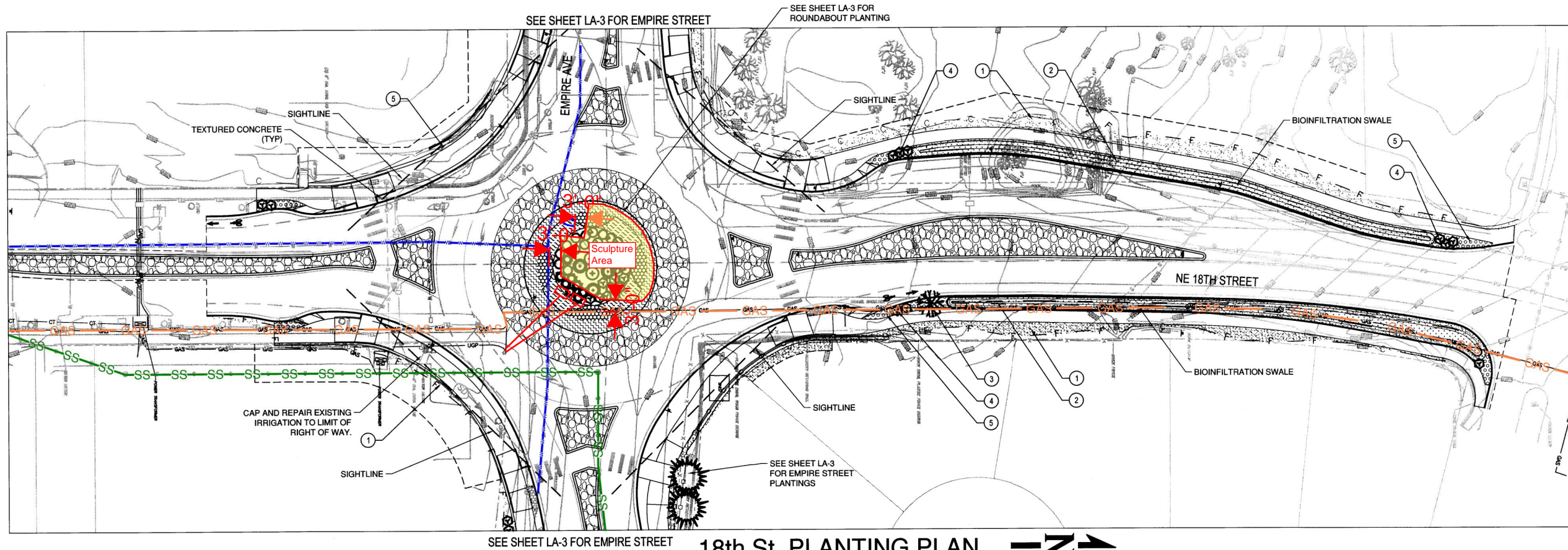


P:\HDXR00000048\0400CAD\LA18th & Empire\DWG\Sheet\175706-la-18th

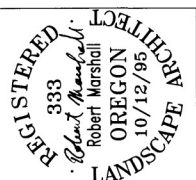


SYMBOLS KEY

- PONDEROSA PINE
- INCENSE CEDAR
- FASTIGATE SCOTCH PINE
- GREENLEAF MANZANITA
- WESTERN REDBUD
- 'TOLLESONS BLUE' WEEPING JUNIPER
- GOLDEN CURRANT
- TOMATO ROSE - PINK FLOWERING
- CARPET ROSE 'APPLEBLOSSOM'
- KINNIKINNICK
- ROCK GARDEN & ROCK GARDEN PLANT COMMUNITY
- PERMANENT SEED MIX NO. 1
- PERMANENT SEED MIX NO. 2
- ROCK MULCH

- 1 SEED WITH PERMANENT SEED MIX NO. 1
- 2 SEED WITH PERMANENT SEED MIX NO. 2
- 3 PLANT CONIFER TREE, 8' - 10' HT., INCENSE CEDAR (SEE DETAIL 1, SHEET LA-2 FOR DETAIL)
- 4 PLANT SHRUB, NO. 5 CONTAINER, WESTERN REDBUD (SEE DETAIL 3, SHEET LA-2 FOR DETAIL)
- 5 INSTALL ROCK MULCH, 2" THICKNESS

18th St. PLANTING PLAN
SCALE: 1" = 30'



EMPIRE AVE & NE 18TH STREET
ROUNDABOUT
18TH ST. PLANTING PLAN
DESCHUTES COUNTY, OREGON



REVISIONS:

1.	
2.	
3.	

DAVID EVANS
AND ASSOCIATES, INC.
2100 Southwest River Parkway
Portland Oregon 97201
Phone: 503.223.6663

DESIGNED BY: BUS
DRAWN BY: KDB
SCALE: AS SHOWN
FILE: 175706-la-18th
DATE: 5/7/12

VERIFY SCALES
0 1"
BAR EQUALS ONE INCH
ON ORIGINAL DRAWING

SHEET: 19/29
LA-4

COB #ST12CB