

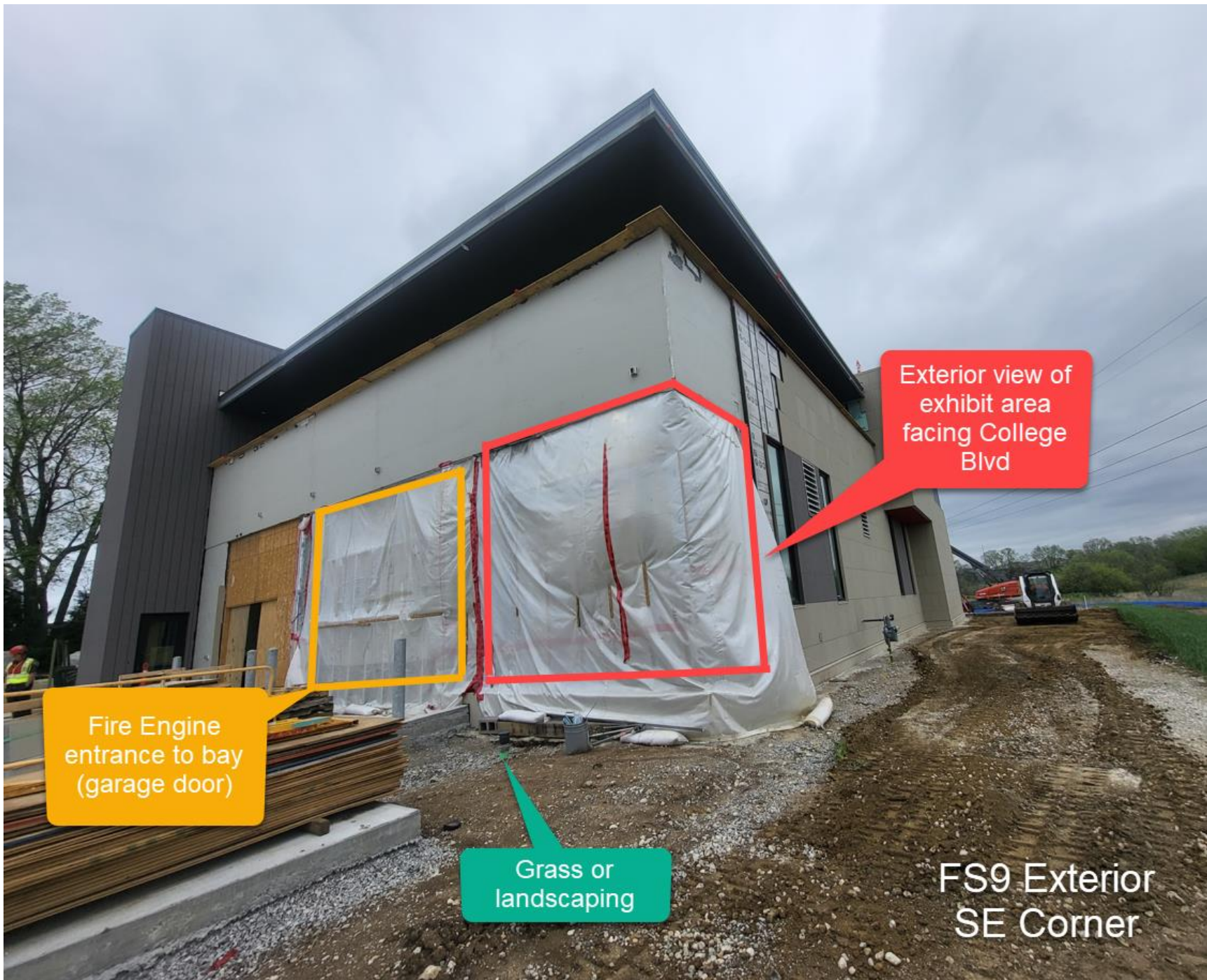
Fire Station 9
20500 College Blvd. Olathe, KS 66061



FS9 Front
Entrance

Memorial
Exhibit
Windows

FS9 Exterior
Rendering



Fire Engine
entrance to bay
(garage door)

Exterior view of
exhibit area
facing College
Blvd

Grass or
landscaping

FS9 Exterior
SE Corner

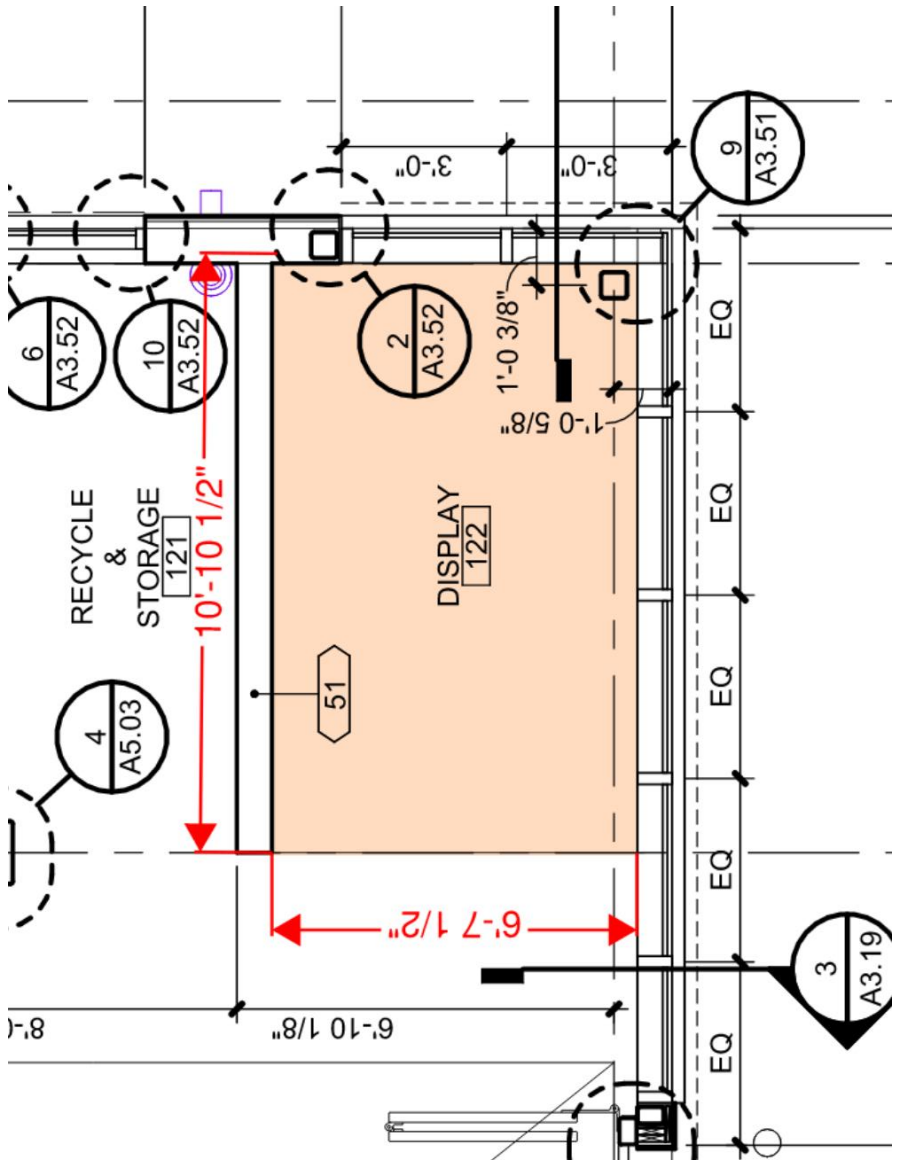
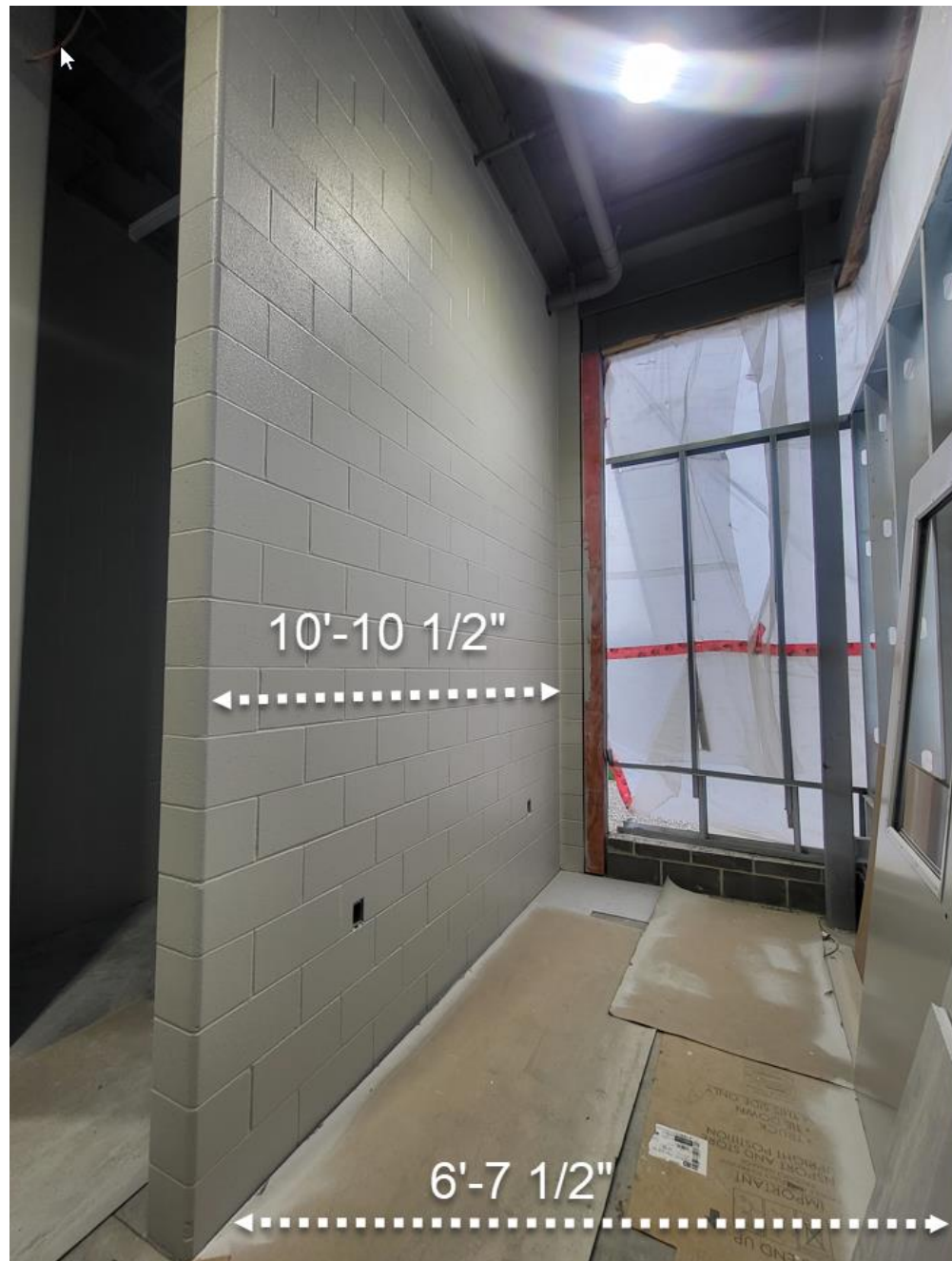


Exhibit Space Video Clip



View of exhibit wall from inside FS9

College Blvd



Engine Bay





Open Walkway

Fire Engine Parking

View of exhibit space from inside FS9

Exhibit space open to fire engine parking

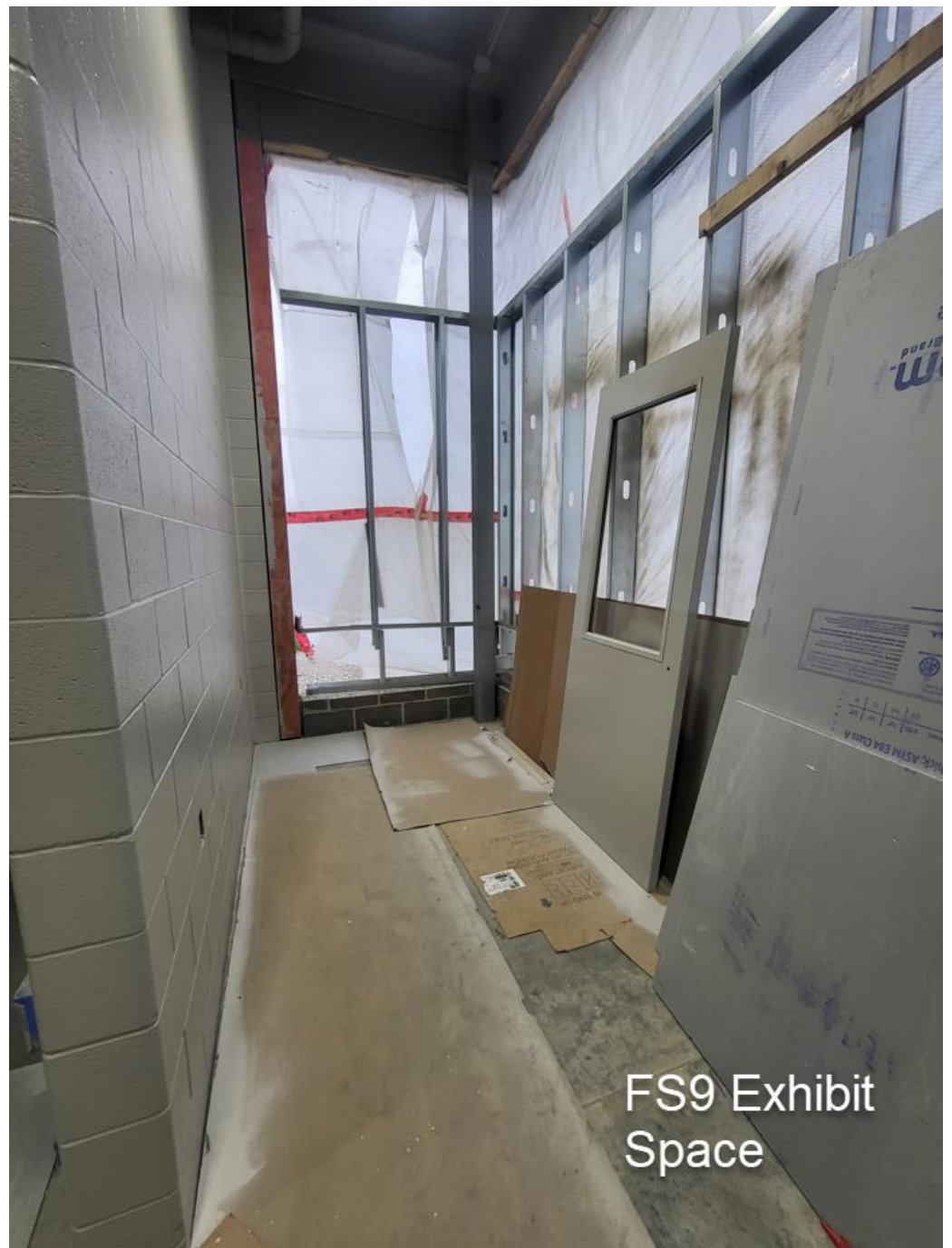


Exterior Window Material Sample



Finished Window Example
(this is not the exhibit space)

FS9 Exterior
SW Corner



FS9 Exhibit
Space



9-11 Steel

Three steel pieces with the same cross-section, measuring 15" tall × 15" deep.

Two pieces are approximately 12" long, weighing 127 lbs and 131 lbs.

The third piece is 45" long, which we estimate to weigh approximately 495 lbs based on an average of about 11 lbs per inch of length.