

12/29/2015 11:57:57 AM C:\Users\jgreeth\Documents\14-142\_Station9-A.model\_lboyer.rvt

IF THIS DIMENSION DOES NOT MEASURE ONE INCH (1") EXACTLY, THIS DRAWING HAS BEEN ENLARGED OR REDUCED, AFFECTING ALL LABELED SCALES

1/8" = 1'-0"



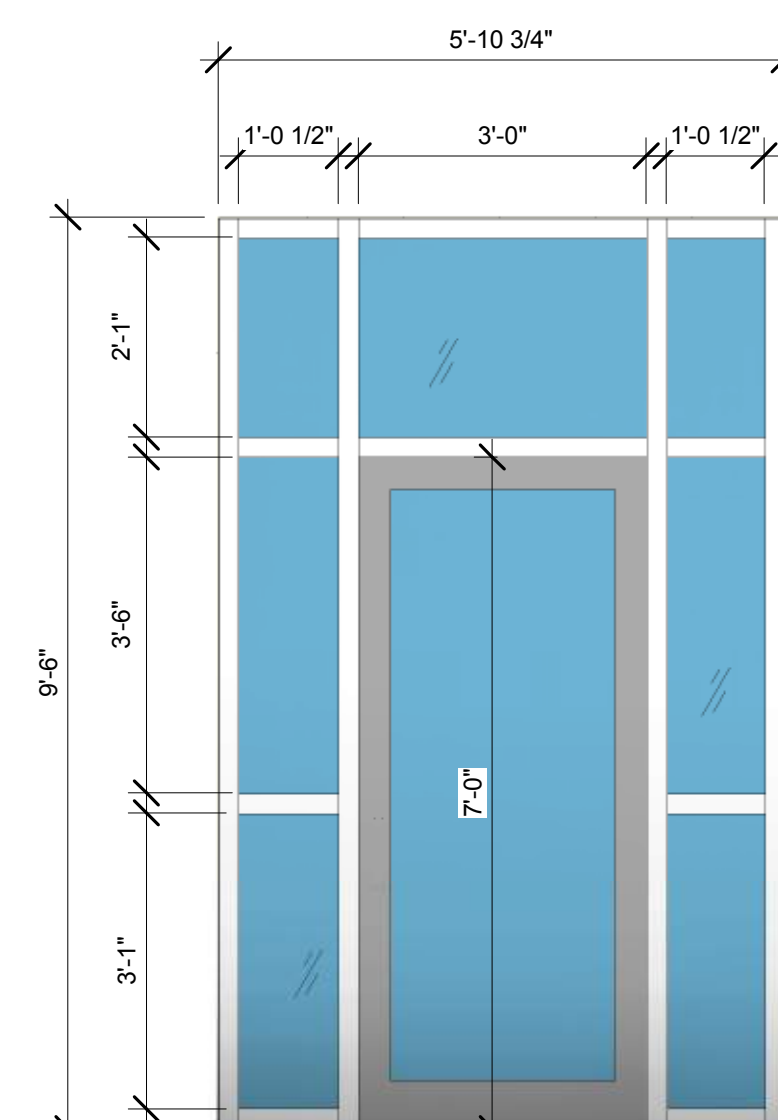
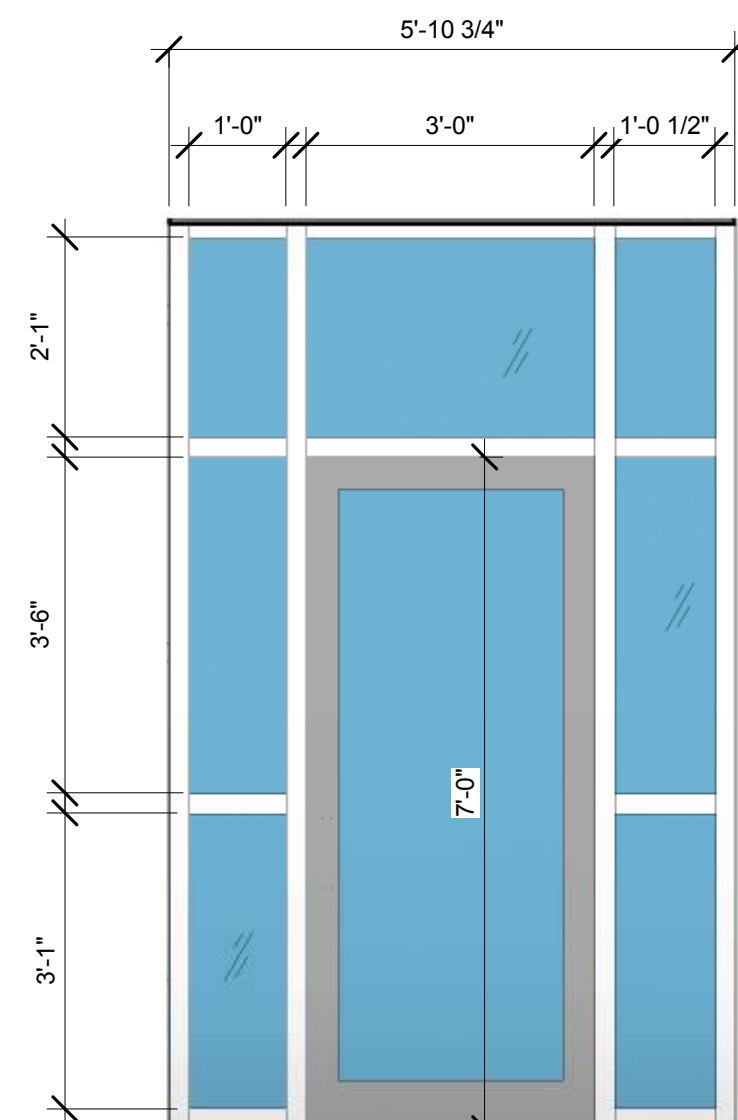
RENDERING OF FIRE APPARATUS BAYS



RENDERING OF APPROACH TO PUBLIC ENTRANCE



ART LOCATION - GLASS OF EXTERIOR DOOR AND INTERIOR DOOR OF VESTIBULE AT PUBLIC ENTRANCE



**FIRE STATION 9  
 REPLACEMENT**

ANCHORAGE, ALASKA  
 MUNICIPALITY OF ANCHORAGE

CONSULTANT:

PROJECT NO: 14-142  
 DATE: DEC. 8, 2015  
 DRAWN BY: -  
 CHECKED BY: -

Symbol	Description	Date

NOT FOR CONSTRUCTION

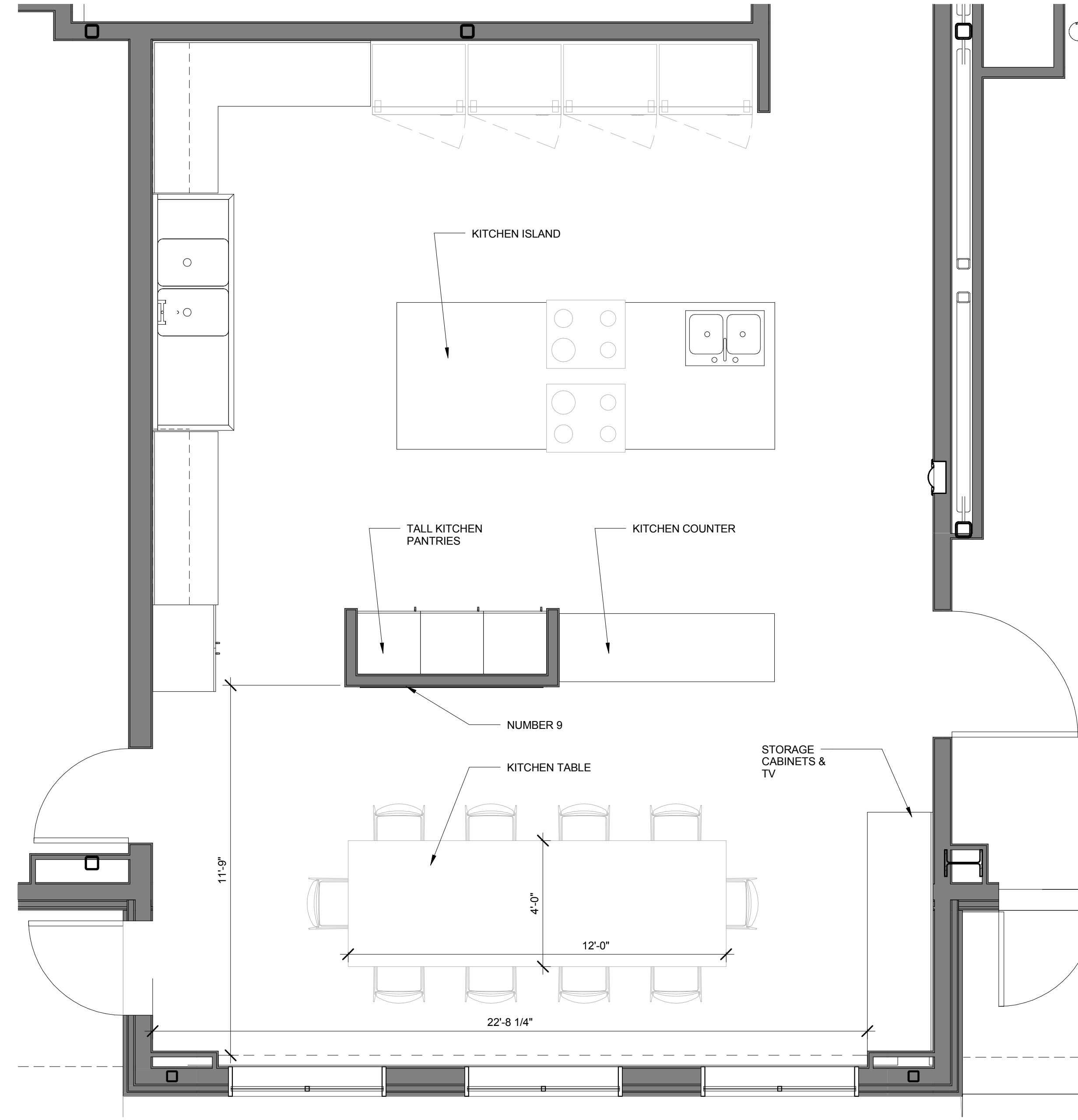
**ART LOCATIONS**  
**ART 1**

IF THIS DIMENSION DOES NOT MEASURE ONE INCH (1") EXACTLY, THIS DRAWING HAS BEEN ENLARGED OR REDUCED, AFFECTING ALL LABELED SCALES

3/8" = 1'

C:\Users\jgreth\Documents\14-142\_Station9-Armodel\_Boyer.rvt

12/8/2015 11:27:22 AM



ART LOCATION - TABLE IN KITCHEN/ DINING AREA

**FIRE STATION 9  
 REPLACEMENT**

ANCHORAGE, ALASKA  
 MUNICIPALITY OF ANCHORAGE

CONSULTANT:

PROJECT NO: 14-142  
 DATE: DEC. 8, 2015  
 DRAWN BY: -  
 CHECKED BY: -

Symbol	Description	Date

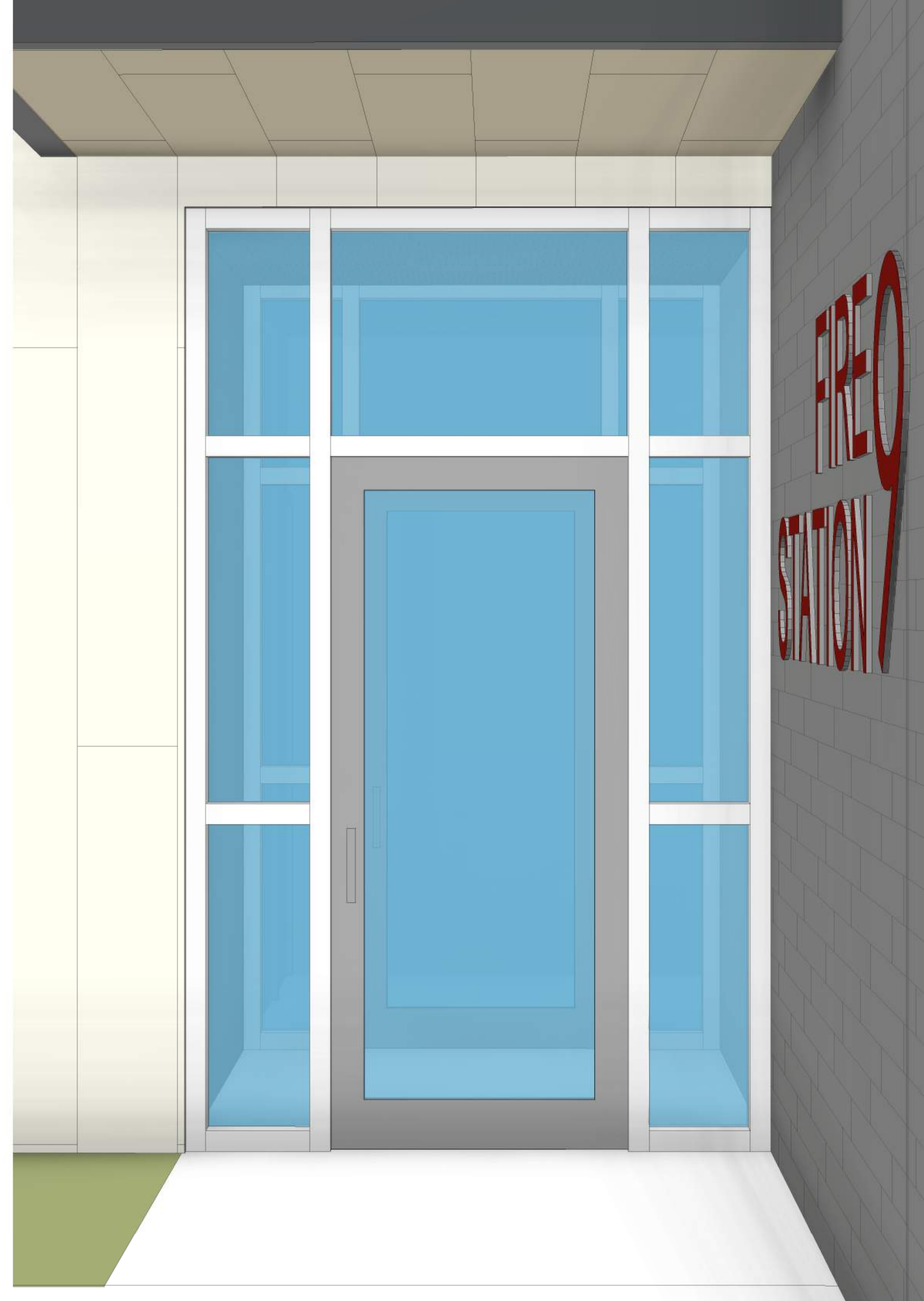
ART LOCATIONS

**ART 2**

IF THIS DIMENSION DOES NOT MEASURE ONE INCH (1") EXACTLY, THIS DRAWING HAS BEEN ENLARGED OR REDUCED. AFFECTING ALL LABELED SCALES.

C:\Users\jgreenk\Documents\14-142\_Station9-Artmodel\_1bayer.rvt

12/8/2015 11:57:53 AM



GLASS OF EXTERIOR DOOR AT VESTIBULE



GLASS OF INTERIOR DOOR AT VESTIBULE

CONSULTANT:  
PROJECT NO: 14-142  
DATE: DEC. 8, 2015  
DRAWN BY: -  
CHECKED BY: -

Symbol	Description	Date

ART LOCATIONS  
**ART 3**

# FIRE STATION 9 REPLACEMENT

ANCHORAGE, ALASKA  
MUNICIPALITY OF ANCHORAGE

NOT FOR CONSTRUCTION