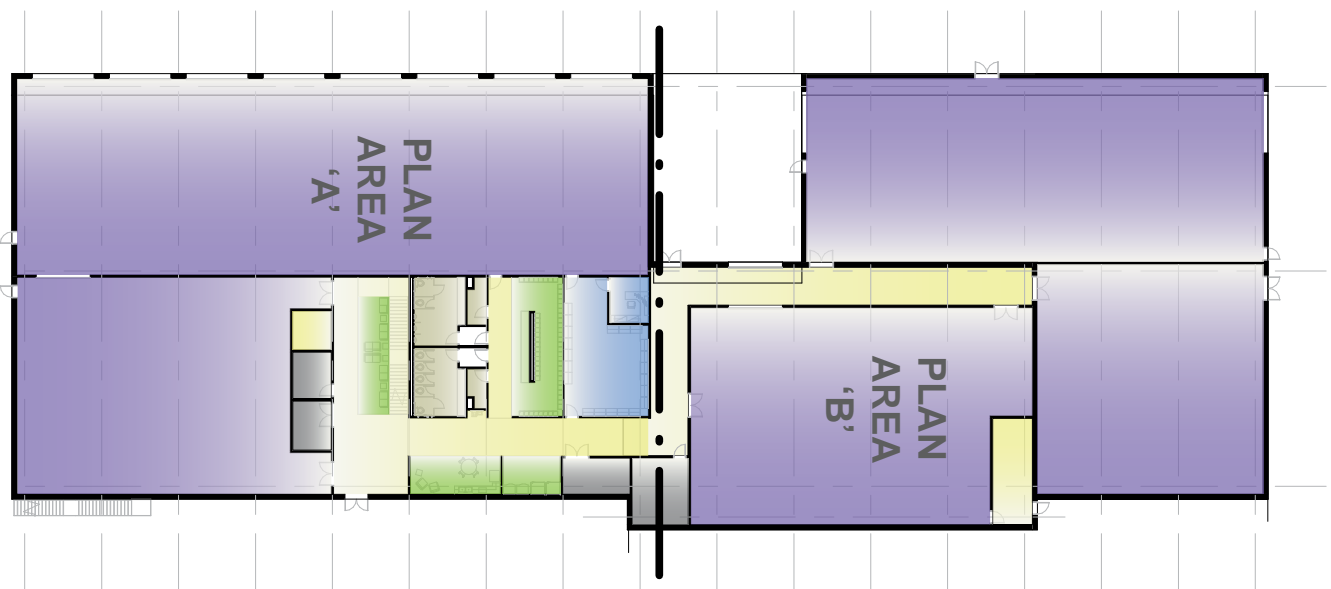


SITE PLAN

INDUSTRIAL BUILDING:
 LEVEL 1 AREA: 35,110 S.F.
 LEVEL 2 AREA: 16,445 S.F.
 TOTAL AREA: 51,555 S.F.

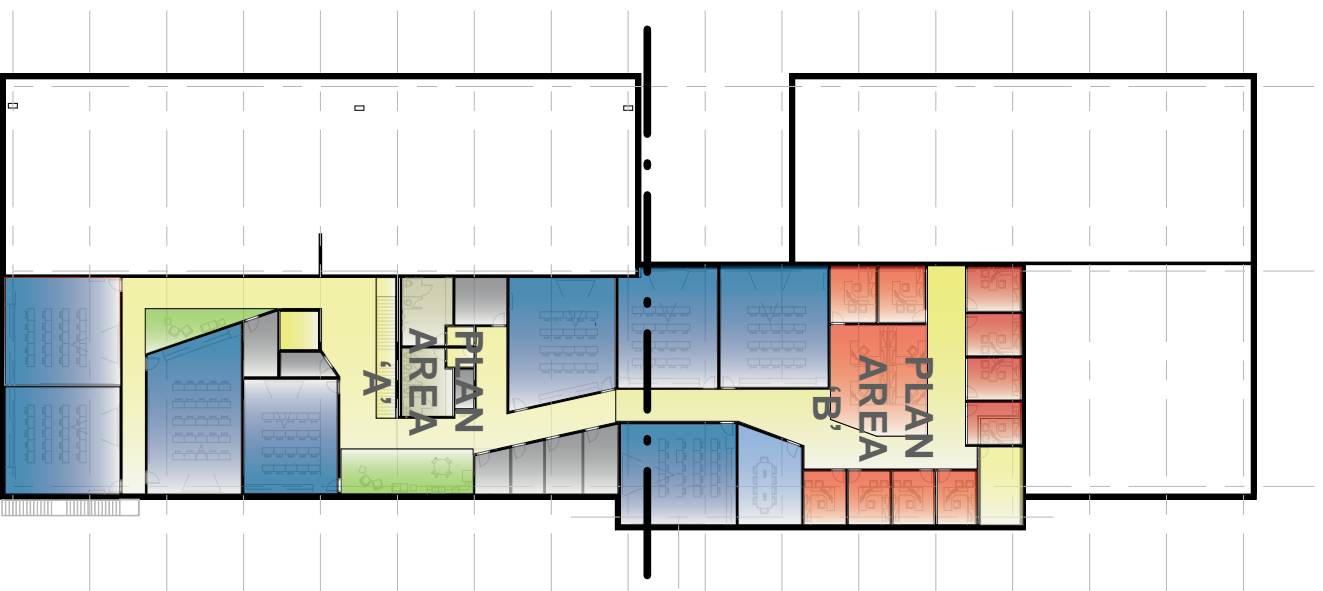


PROFESSIONAL BUILDING:
 LEVEL 1 AREA: 33,882 S.F.
 LEVEL 2 AREA: 30,893 S.F.
 LEVEL 3 AREA: 31,579 S.F.
 TOTAL AREA: 96,354 S.F.



LEVEL 1 FLOOR PLAN - OVERALL

INDUSTRIAL BUILDING:
LEVEL 2 AREA: 16,445 S.F.



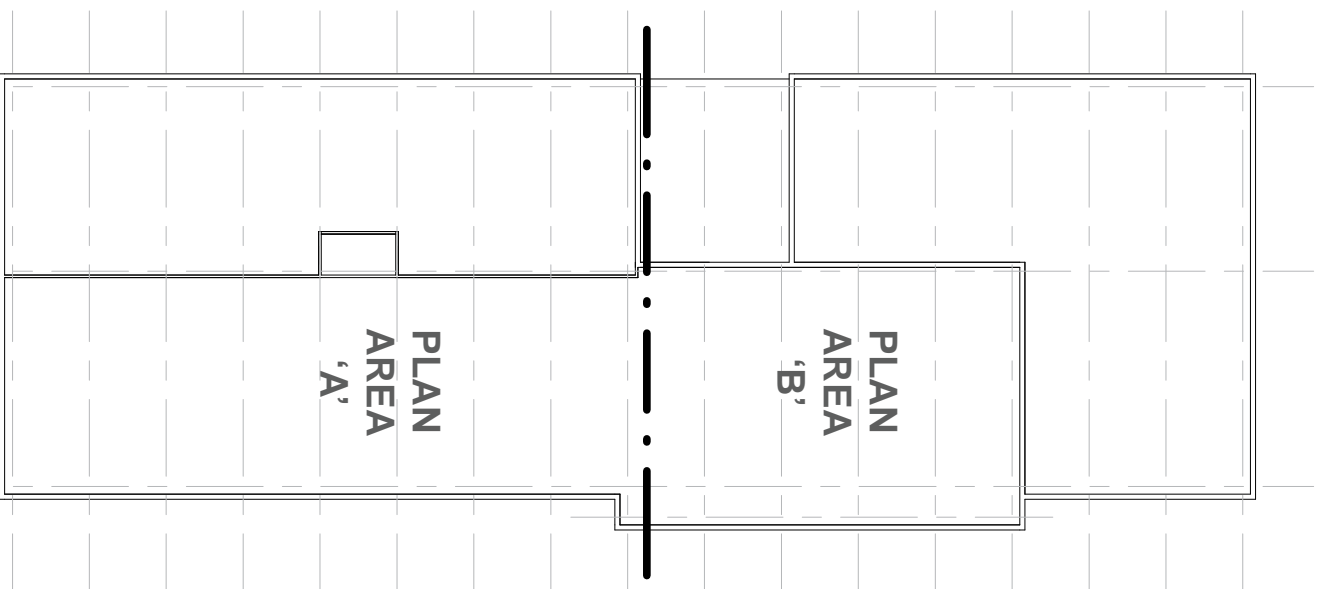
PROFESSIONAL BUILDING:
LEVEL 2 AREA: 30,893 S.F.



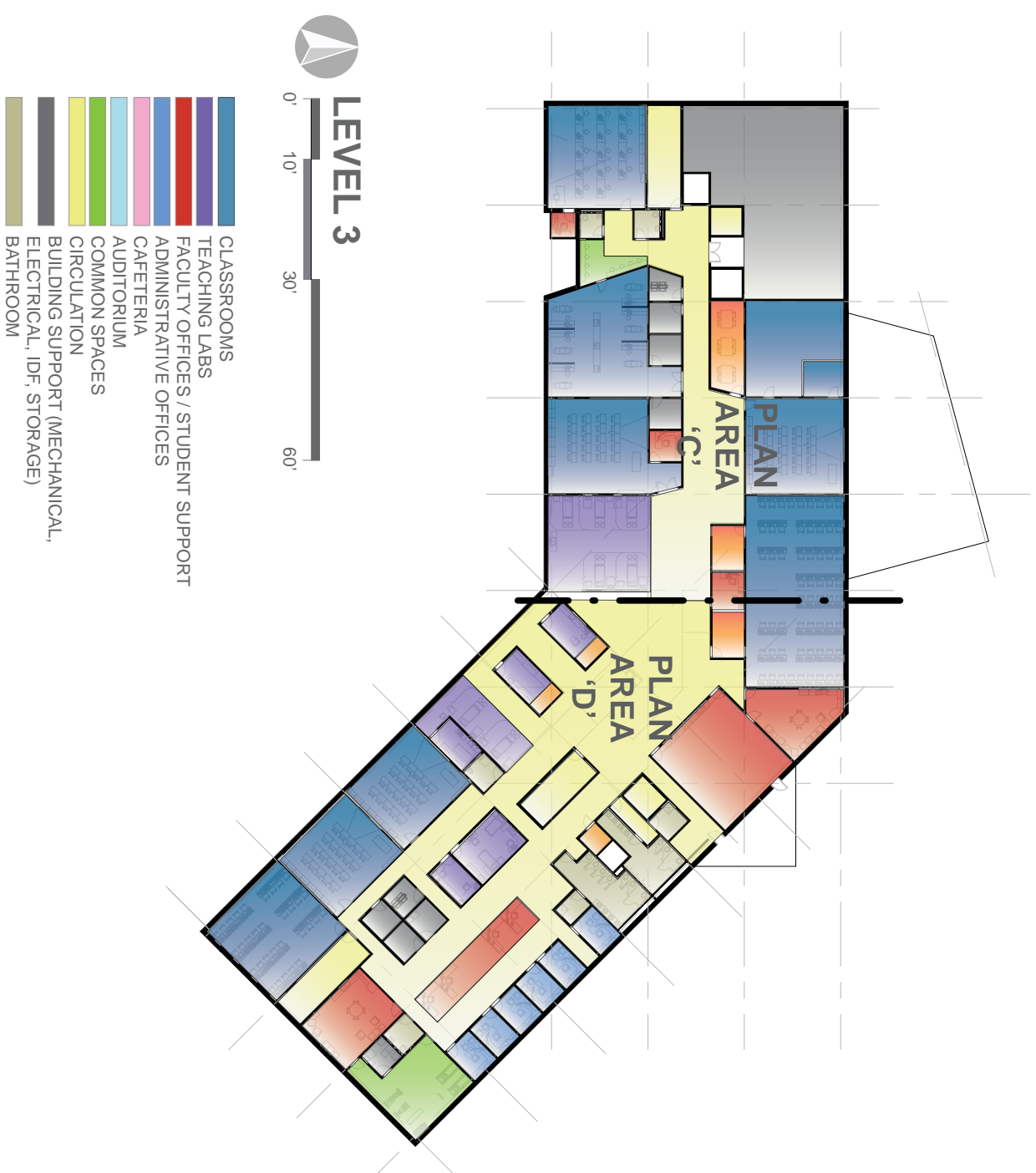
- LEVEL 2**
- CLASSROOMS
 - TEACHING LABS
 - FACULTY OFFICES / STUDENT SUPPORT
 - ADMINISTRATIVE OFFICES
 - CAFETERIA
 - AUDITORIUM
 - COMMON SPACES
 - CIRCULATION
 - BUILDING SUPPORT (MECHANICAL, ELECTRICAL, IDF, STORAGE)
 - BATHROOM

LEVEL 2 FLOOR PLAN - OVERALL

INDUSTRIAL BUILDING



PROFESSIONAL BUILDING:
LEVEL 3 AREA: 31,579 S.F.



LEVEL 3 FLOOR PLAN - OVERALL



NORTH PERSPECTIVE



SOUTH PERSPECTIVE