

## Photographs of Orange Ave. and Ringling Blvd. Intersection, Sarasota Florida



Orange Ave. & Ringling Blvd. intersection:  
Standing North on Orange Avenue looking South.



Orange Ave. & Ringling Blvd. intersection:  
Standing South on Orange Avenue looking North.



Orange Ave. & Ringling Blvd. intersection:  
Standing West on Ringling Boulevard looking East.



Orange Ave. & Ringling Blvd.  
intersection:  
Standing East on Ringling  
Boulevard looking West.



Orange Ave. & Ringling Blvd.  
intersection:  
View down from Southeast  
corner.

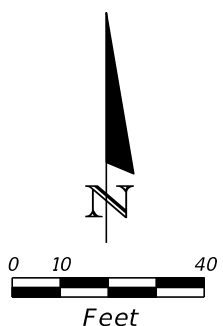
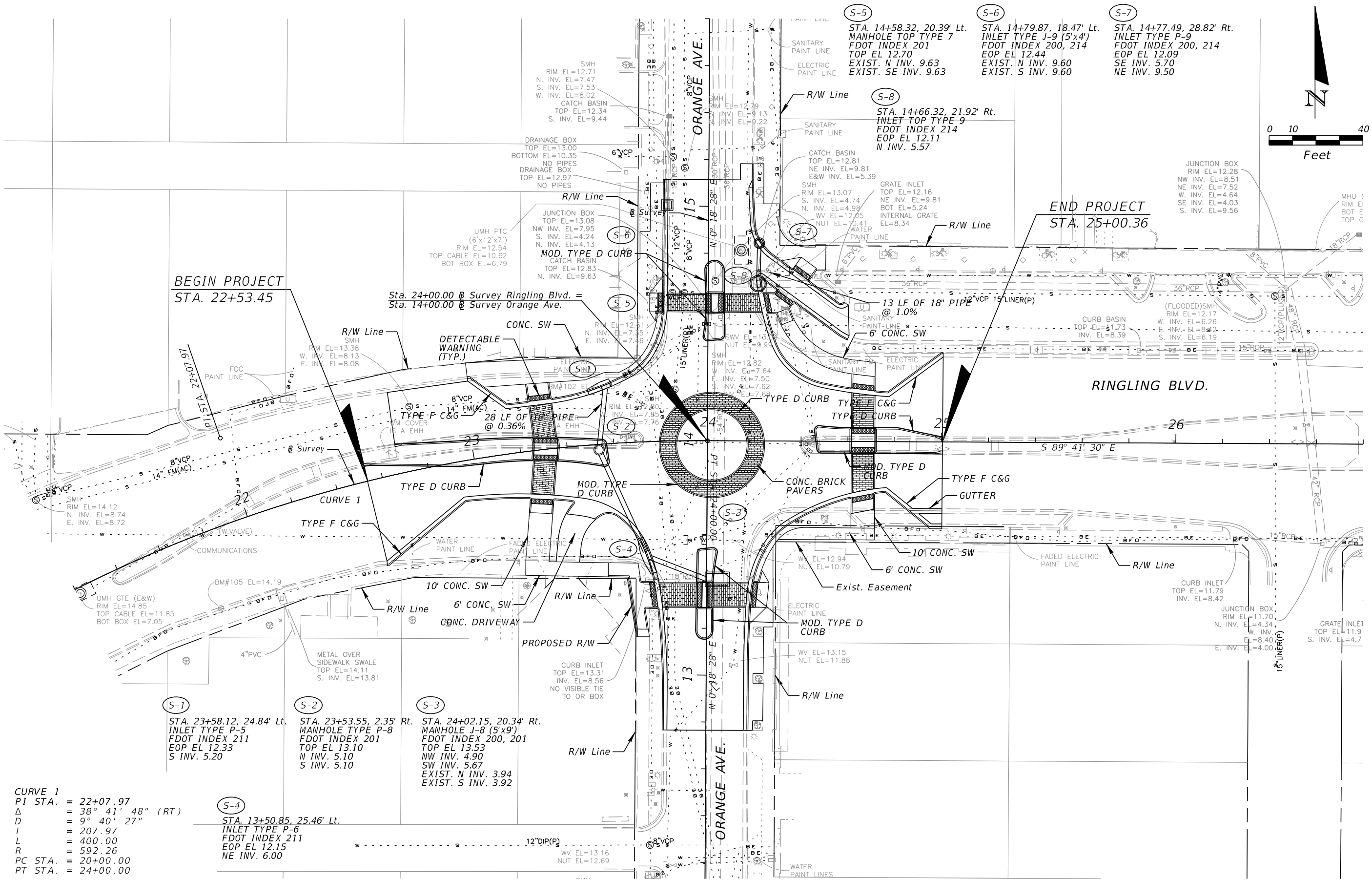


Example of a similar roundabout recently constructed; this is located two blocks north at the intersection of Orange Avenue and Main Street.



Sculpture was installed in the middle island on April 17, 2016.

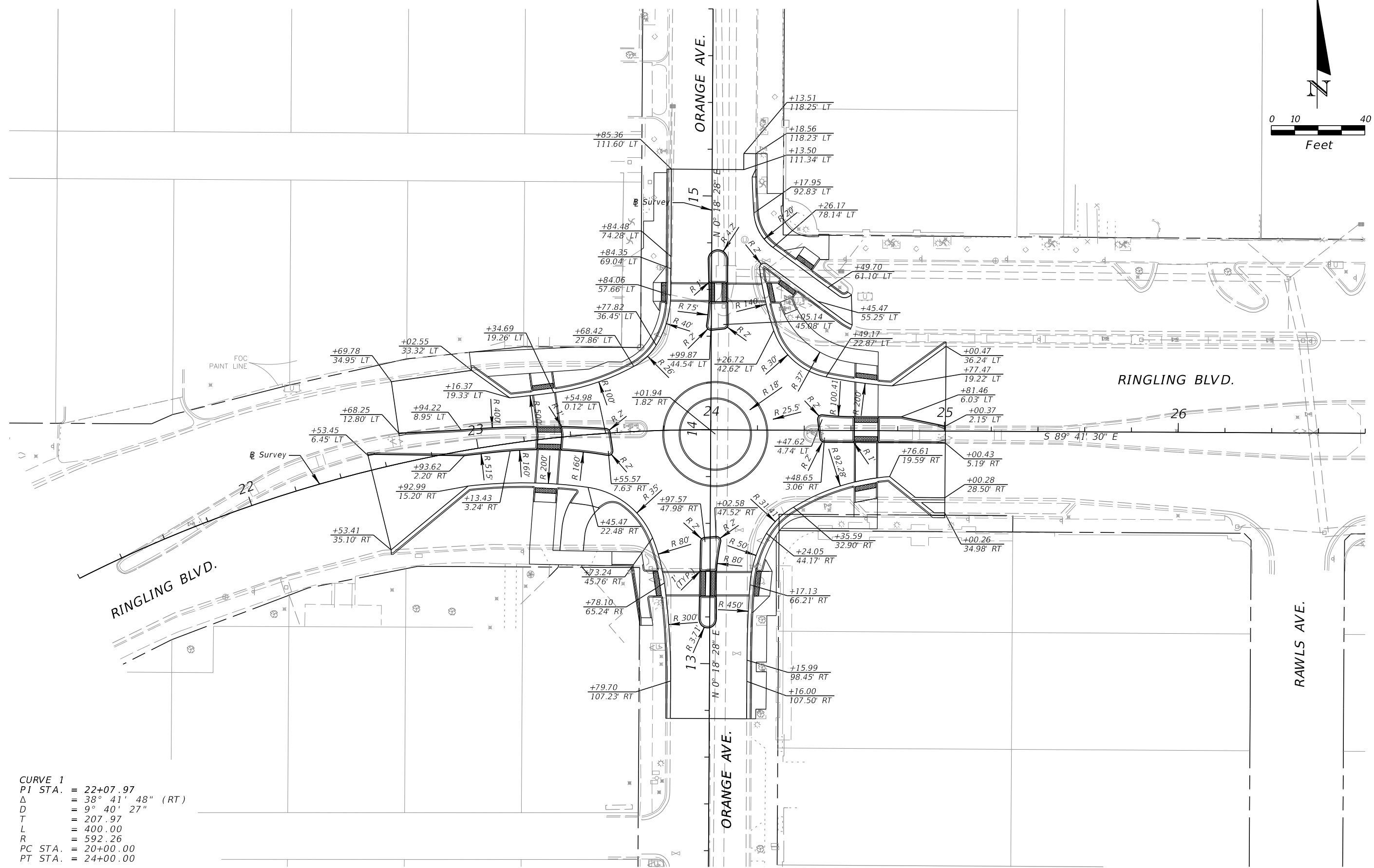
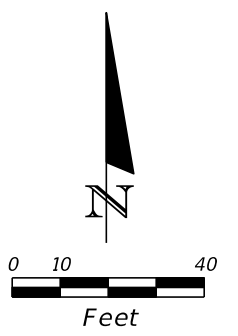




**CURVE 1**  
 PI STA. = 22+07.97  
 Δ = 38° 41' 48" (RT)  
 D = 9° 40' 27"  
 T = 207.97  
 L = 400.00  
 R = 592.26  
 PC STA. = 20+00.00  
 PT STA. = 24+00.00

- (S-1) STA. 23+58.12, 24.84' Lt.  
INLET TYPE P-5  
FDOT INDEX 211  
EOP EL 12.33  
S INV. 5.20
- (S-2) STA. 23+53.55, 2.35' Rt.  
MANHOLE TYPE P-8  
FDOT INDEX 201  
TOP EL 13.10  
N INV. 5.10  
S INV. 5.10
- (S-3) STA. 24+02.15, 20.34' Rt.  
MANHOLE J-8 (5'x9')  
FDOT INDEX 200, 201  
TOP EL 13.53  
NW INV. 4.90  
SW INV. 5.67  
EXIST. N INV. 3.94  
EXIST. S INV. 3.92
- (S-4) STA. 13+50.85, 25.46' Lt.  
INLET TYPE P-6  
FDOT INDEX 211  
EOP EL 12.15  
NE INV. 6.00

REVISIONS				GREGORY S. TRIM, P.E. P.E. LICENSE NUMBER 52935 SAM SCHWARTZ ENGINEERING, D.P.C., PA 2709 N. ROCKY POINT DR., SUITE 104 TAMPA, FL 33607 CERTIFICATE OF AUTHORIZATION 30268	CITY OF SARASOTA TRANSPORTATION ENGINEERING DIVISION		ROADWAY PLAN Page 4 of 5	SHEET NO. 7
DATE	DESCRIPTION	DATE	DESCRIPTION		ROAD	PROJECT ID		
					RINGLING BLVD. & ORANGE AVE.	435451-158/68-01		



**CURVE 1**  
 PI STA. = 22+07.97  
 $\Delta$  = 38° 41' 48" (RT)  
 D = 9° 40' 27"  
 T = 207.97  
 L = 400.00  
 R = 592.26  
 PC STA. = 20+00.00  
 PT STA. = 24+00.00

REVISIONS				GREGORY S. TRIM, P.E. P.E. LICENSE NUMBER 52935 SAM SCHWARTZ ENGINEERING, D.P.C., PA 2709 N. ROCKY POINT DR., SUITE 104 TAMPA, FL 33607 CERTIFICATE OF AUTHORIZATION 30268	CITY OF SARASOTA TRANSPORTATION ENGINEERING DIVISION		ROADWAY GEOMETRIC PLAN Page 5 of 5	SHEET NO. 8
DATE	DESCRIPTION	DATE	DESCRIPTION		ROAD	PROJECT ID		
					RINGLING BLVD. & ORANGE AVE.	435451-1-58/68-01		