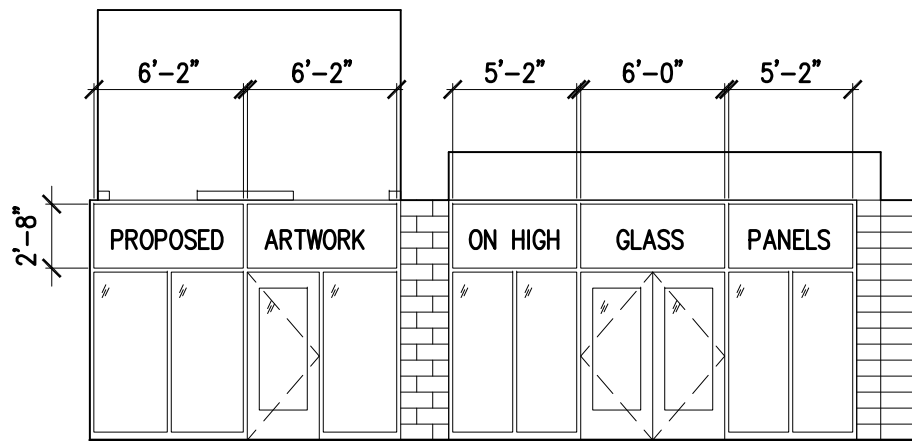
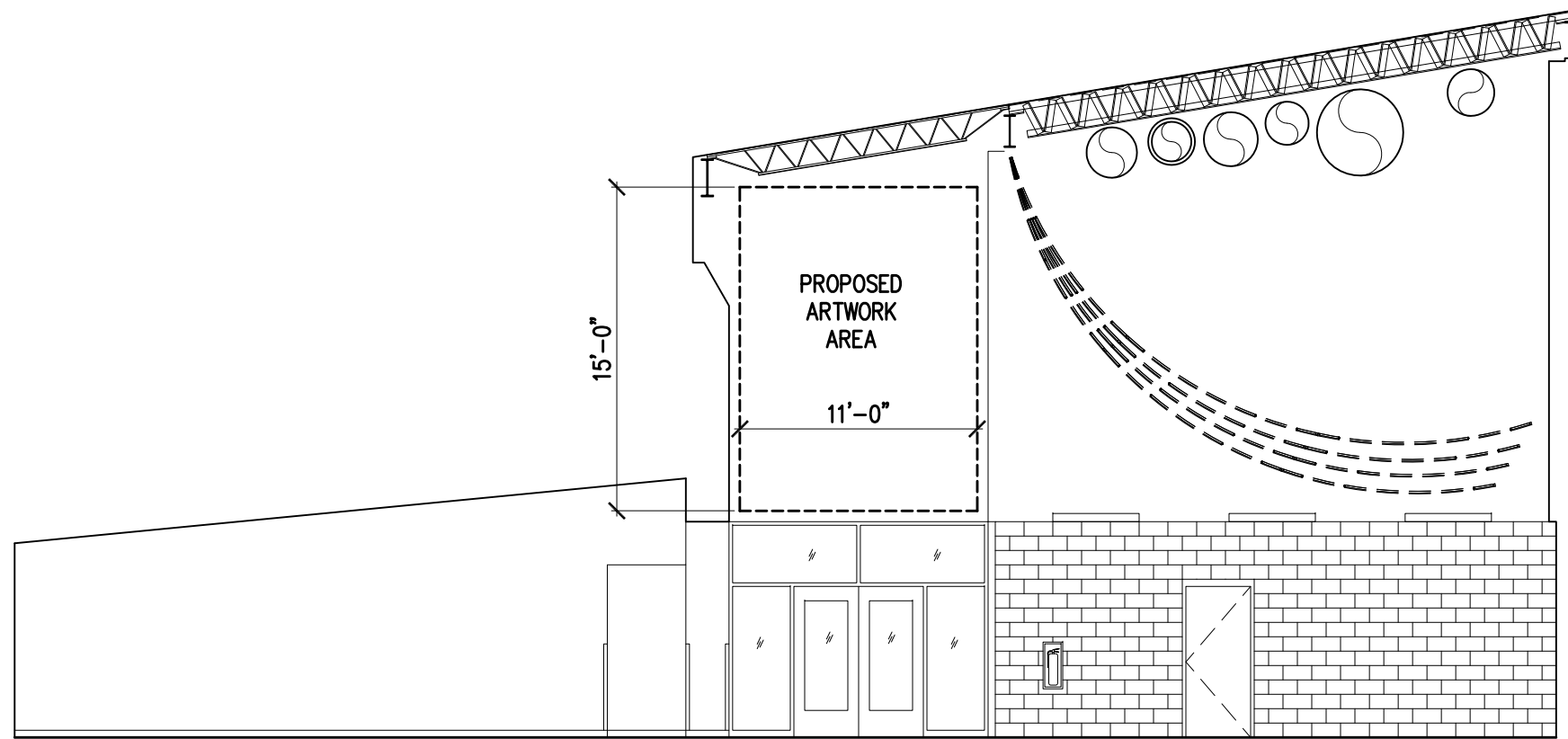


DRAWING FILE: w:\2012\12044.01 - regional aquatic health & safety center.dwg\art\_dwg\interior\_elevations\_1.dwg

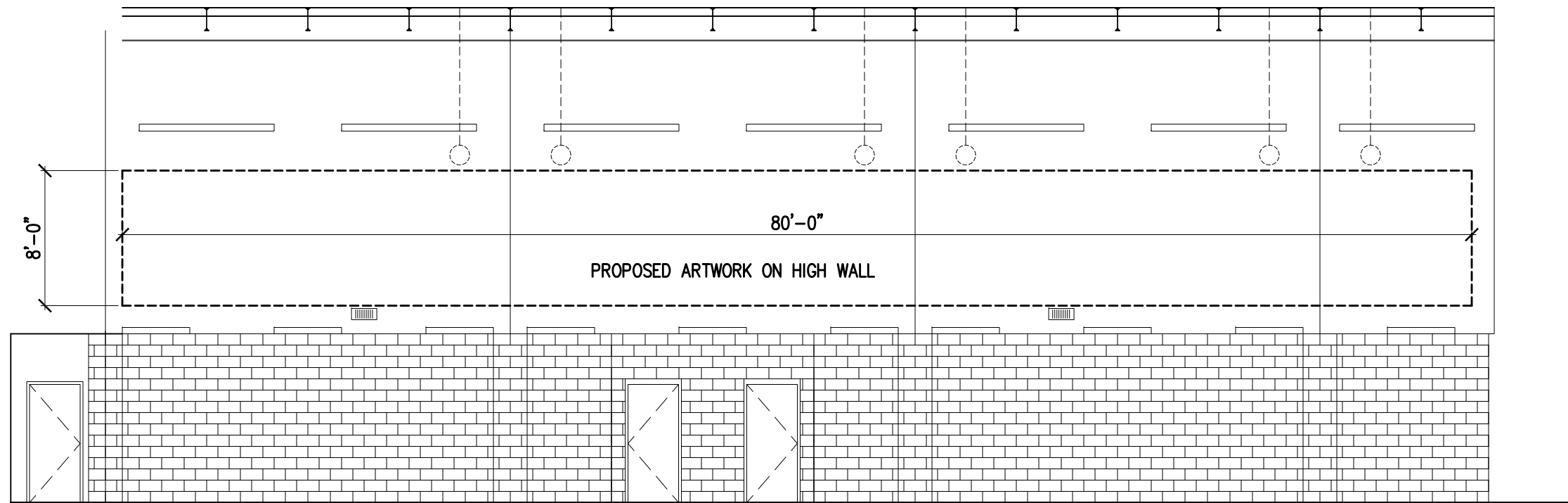
PLOT DATE: 3/29/2017 12:06 PM



**B** GLASS OVER DOORS TO POOL AREA  
1/8" = 1'-0"



**C** HIGH WALL AT END OF CORRIDOR  
1/8" = 1'-0"



**A** HIGH WALL ABOVE LOCKER ROOMS IN GALLERY  
1/8" = 1'-0"



Architects Alaska, Inc.  
architectsalaska.com

900 W. 5th Ave. Suite 403  
Anchorage, Alaska 99501-2029  
907.272.3567 • 907.277.1732 fax

191 E. Swanson Ave. Suite 203  
Wasilla, Alaska 99634-7025  
907.373.7503 • 907.376.3166 fax

Consultant

City of Bethel  
**YUKON KUSKOKWIM REGIONAL  
 AQUATIC HEALTH AND SAFETY CENTER**  
 Bethel, Alaska

Revisions		
No.	Description	Date

Drawn by	Date
DLM	28 MARCH 17
Checked	Job No.
DLM	12044.01

Sheet Contents  
INTERIOR WALL  
ARTWORK LOCATIONS

Category	Sheet No.
A	3