

**A1**  
**PA100**  
**SITE PLAN**  
1" = 10'-0"



**ARCHITECTURE • PLANNING • INTERIORS**  
649 E SOUTH TEMPLE • SLC, UT 84102  
801.355.5915 • www.crsa-us.com

|  |  |
|--|--|
| <b>STRUCTURAL ENGINEER</b><br>REAVELEY ENGINEERS + ASSOC.<br>675 EAST 500 SOUTH, SUITE 400<br>SALT LAKE CITY, UT 84102   | C/O MIKE BUEHNER<br>mbuehner@reaveley.com<br>(801)486-3883       |
| <b>MECHANICAL ENGINEER</b><br>COLVIN ENGINEERING ASSOCIATES<br>244 WEST 300 NORTH, SUITE 200<br>SALT LAKE CITY, UT 84103 | C/O STEVE CONNOR<br>sconnor@cea-ut.com<br>(801)322-2400          |
| <b>ELECTRICAL ENGINEER</b><br>SPECTRUM ENGINEERS<br>324 S STATE STREET, SUITE 400<br>SALT LAKE CITY, UT 84111            | C/O DAVE WESEMANN<br>dew@spectrum-engineers.com<br>(801)328-5151 |
| <b>CIVIL ENGINEER</b><br>TALISMAN CIVIL CONSULTANTS<br>5217 S STATE STREET, SUITE 200<br>MURRAY, UT 84107                | C/O RYAN CATHEY<br>ryanc@talismancivil.com<br>(801)743-1300      |
| <b>LANDSCAPE ARCHITECT</b><br>CRSA SITE STUDIO<br>649 EAST SOUTH TEMPLE<br>SALT LAKE CITY, UT 84102                      | C/O KELLY GILLMAN<br>kelly@crsa-us.com<br>(801)355-5915          |
| <b>MATERIALS HANDLING CONSULTANT</b><br>TROMMER & ASSOCIATES<br>150 SPRINGSIDE DR. UNIT A-100<br>AKRON, OH 44333         | C/O STEVE TROMMER<br>strommer@trommerinc.com<br>(330)668-3700    |



DFCM PROJECT NUMBER: 17138310

**REFERENCE ONLY**  
**NOT FOR CONSTRUCTION**

**UTAH STATE ARCHIVES EXPANSION PROJECT**  
346 S RIO GRANDE STREET  
SALT LAKE CITY, UT 84101

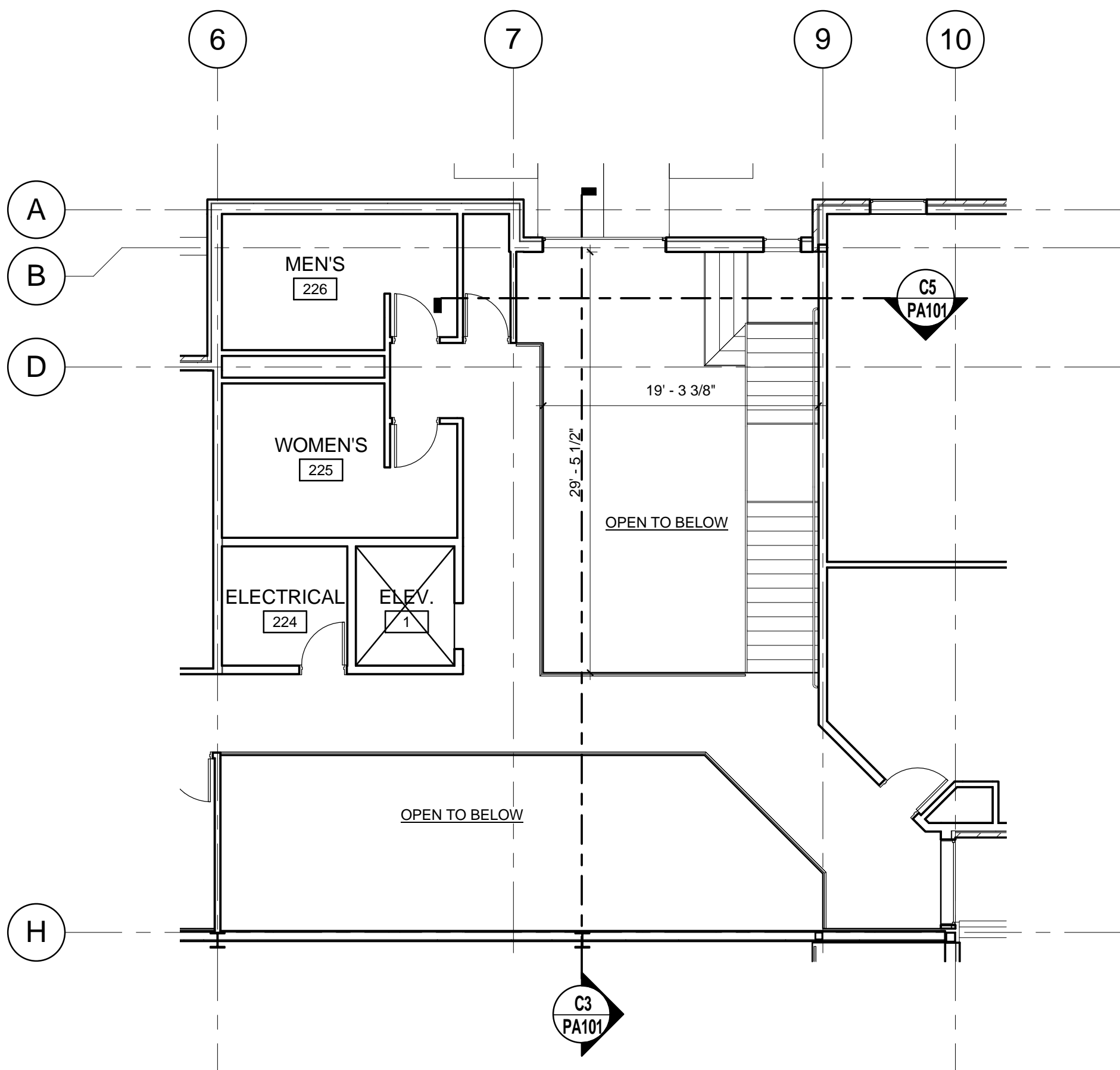
**UTAH STATE ARCHIVES**  
346 S RIO GRANDE STREET  
SALT LAKE CITY, UT 84101

|                         |                         |
|-------------------------|-------------------------|
| CD                      | 07/17/2017              |
| DD                      | 06/14/2017              |
| PROJECT NUMBER: B16-068 | FILE NAME: filename.rvt |
| DRAWN BY: Author        | CHECKED BY: Checker     |

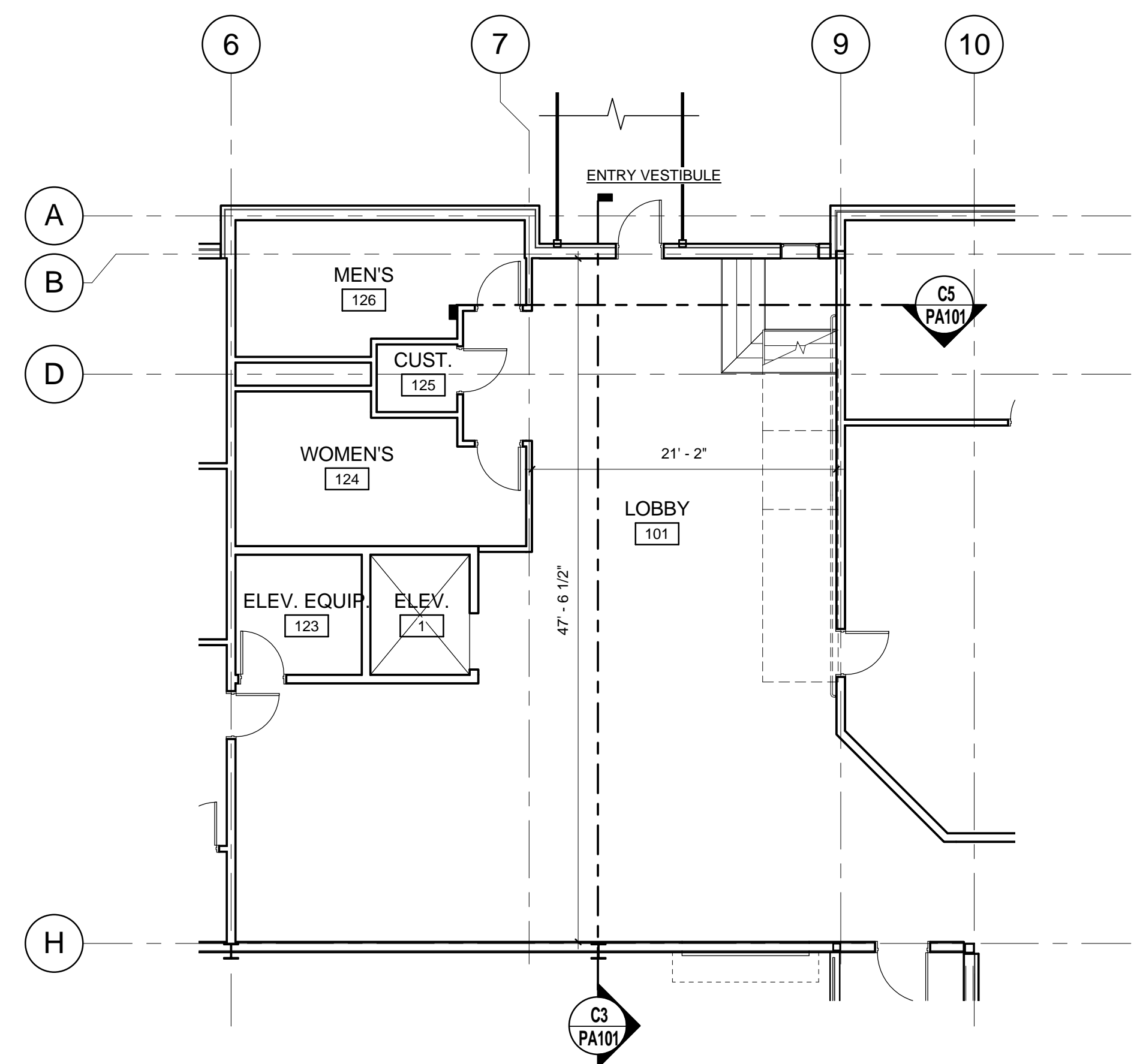
**SITE PLAN**

**PA100**

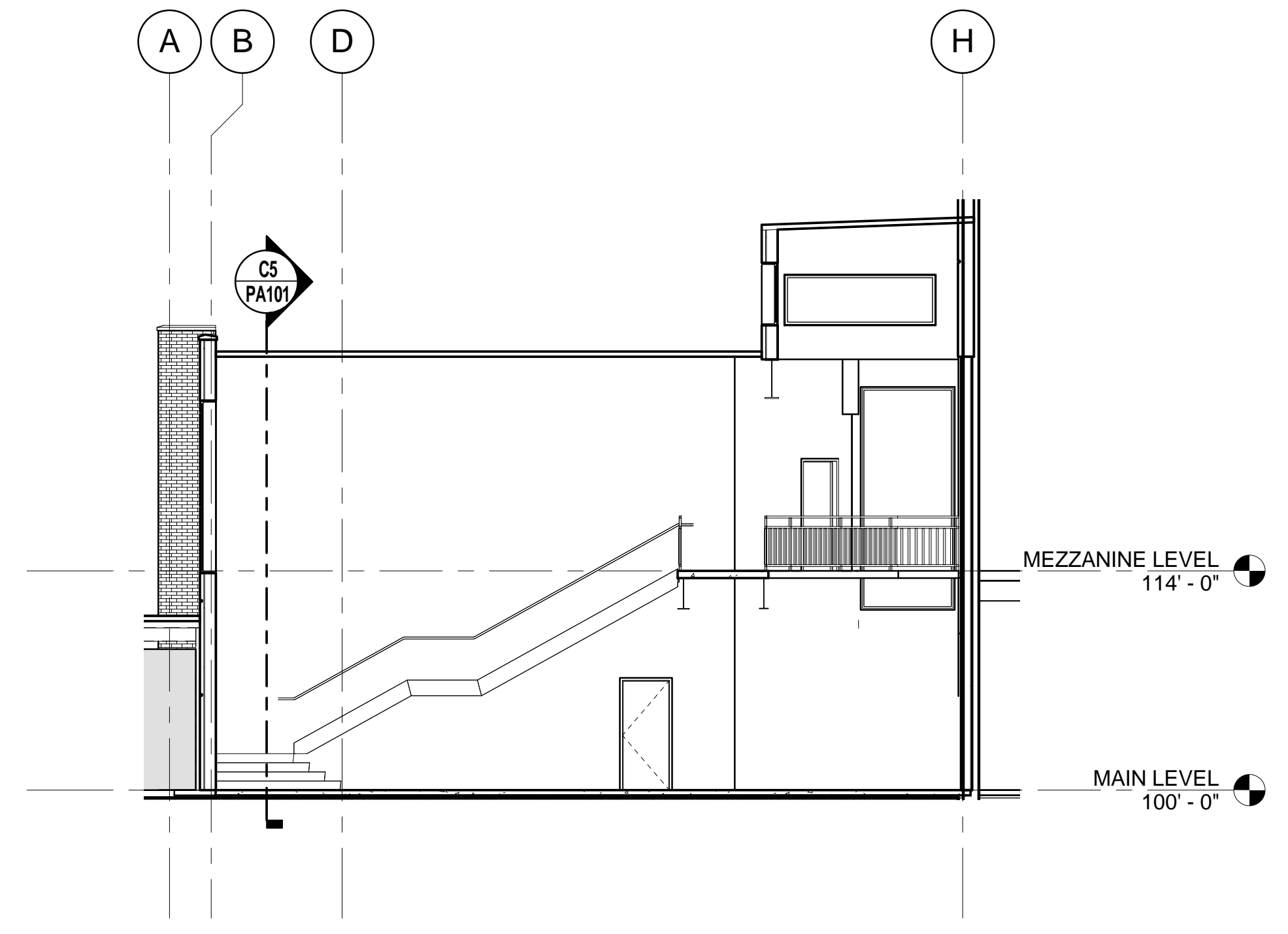
REFERENCE ONLY



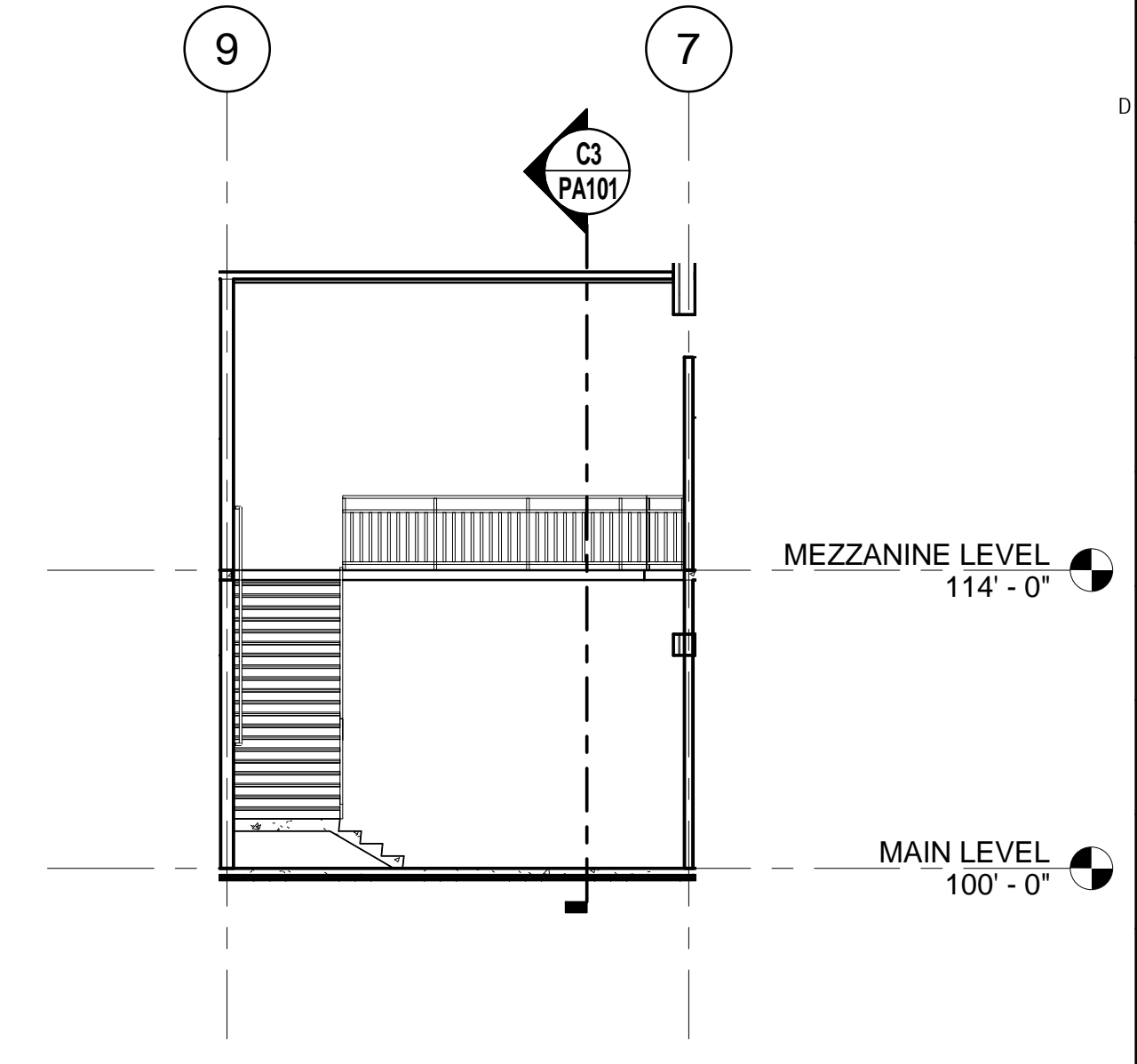
C1 PA101 1/8" = 1'-0"  
**SECOND LEVEL FLOOR PLAN**



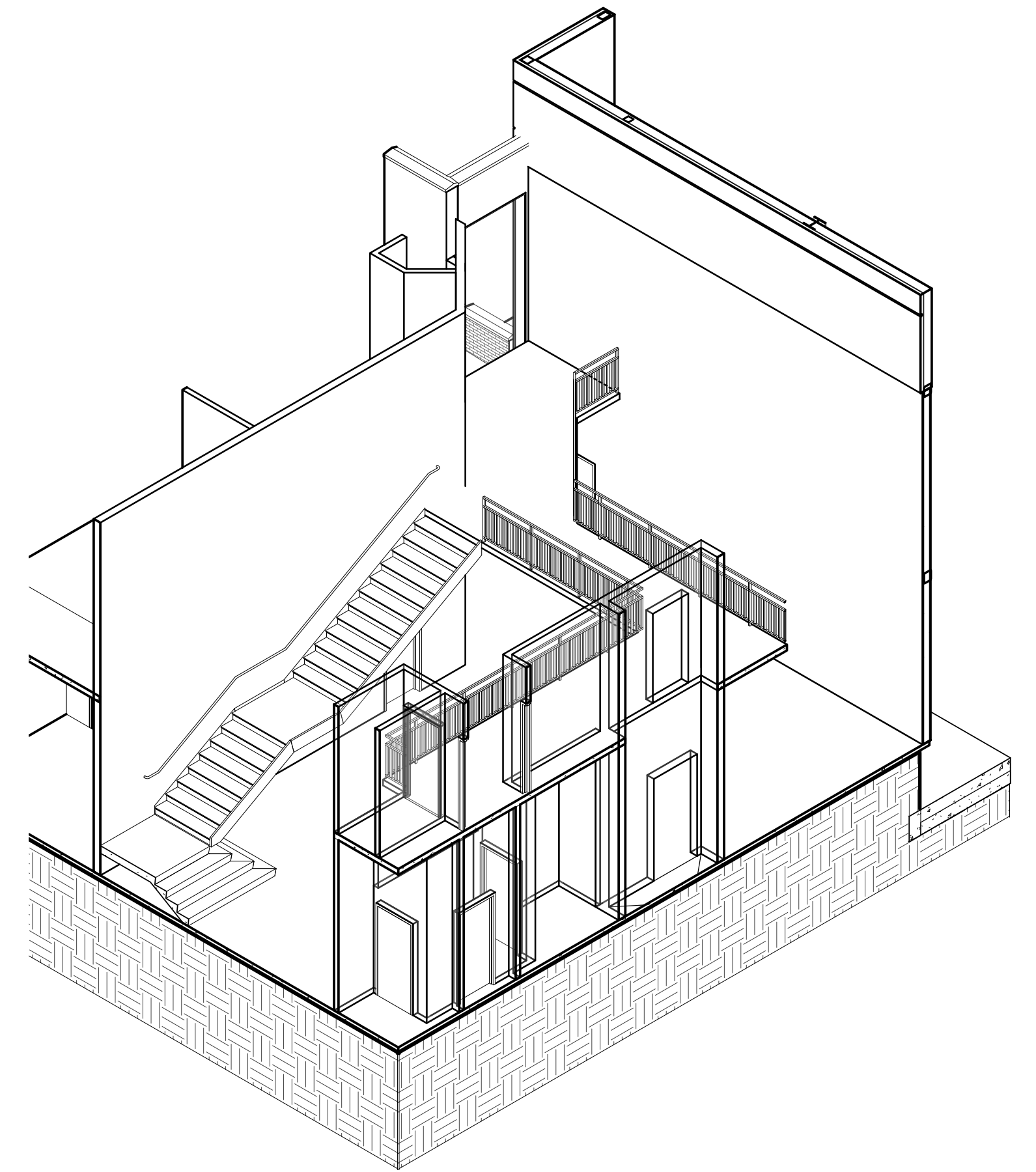
A1 PA101 1/8" = 1'-0"  
**MAIN LEVEL FLOOR PLAN**



C3 PA101 1/8" = 1'-0"  
**LOBBY SECTION 1**



C5 PA101 1/8" = 1'-0"  
**LOBBY SECTION 2**



A3 PA101  
**LOBBY AXONOMETRIC**



ARCHITECTURE • PLANNING • INTERIORS  
 649 E SOUTH TEMPLE • SL, UT 84102  
 801.355.5915 • www.crsa-us.com

- STRUCTURAL ENGINEER  
 REAVELEY ENGINEERS + ASSOC.  
 675 EAST 500 SOUTH, SUITE 400  
 SALT LAKE CITY, UT 84102  
 C/O MIKE BUEHNER  
 mbuehner@reaveley.com  
 (801)486-3883
- MECHANICAL ENGINEER  
 COLVIN ENGINEERING ASSOCIATES  
 244 WEST 300 NORTH, SUITE 200  
 SALT LAKE CITY, UT 84103  
 C/O STEVE CONNOR  
 scconnor@cea-ut.com  
 (801)322-2400
- ELECTRICAL ENGINEER  
 SPECTRUM ENGINEERS  
 324 S STATE STREET, SUITE 400  
 SALT LAKE CITY, UT 84111  
 C/O DAVE WESEMANN  
 dwe@spectrum-engineers.com  
 (801)328-5151
- CIVIL ENGINEER  
 TALISMAN CIVIL CONSULTANTS  
 5217 S STATE STREET, SUITE 200  
 MURRAY, UT 84107  
 C/O RYAN CATHEY  
 ryan@talismancivil.com  
 (801)743-1300
- LANDSCAPE ARCHITECT  
 CRSA SITE STUDIO  
 649 EAST SOUTH TEMPLE  
 SALT LAKE CITY, UT 84102  
 C/O KELLY GILLMAN  
 kelly@crsa-us.com  
 (801)355-5915
- MATERIALS HANDLING CONSULTANT  
 TROMMER & ASSOCIATES  
 150 SPRINGSIDE DR. UNIT A-100  
 AKRON, OH 44333  
 C/O STEVE TROMMER  
 strommer@trommerinc.com  
 (330)668-3700



DFCM PROJECT NUMBER: 17138310

**REFERENCE ONLY**  
**NOT FOR CONSTRUCTION**

**UTAH STATE ARCHIVES EXPANSION PROJECT**  
 346 S RIO GRANDE STREET  
 SALT LAKE CITY, UT 84101

**UTAH STATE ARCHIVES**  
 346 S RIO GRANDE STREET  
 SALT LAKE CITY, UT 84101

|                         |                         |
|-------------------------|-------------------------|
| CD                      | 07/17/2017              |
| DD                      | 06/14/2017              |
| PROJECT NUMBER: B16-068 | FILE NAME: filename.rvt |
| DRAWN BY: Author        | CHECKED BY: Checker     |

LOBBY DRAWINGS

**PA101**



ARCHITECTURE • PLANNING • INTERIORS  
 649 E SOUTH TEMPLE • SLC, UT 84102  
 801.355.5915 • www.crsa-us.com

|  |  |
|--|--|
| <b>STRUCTURAL ENGINEER</b><br>REAVELEY ENGINEERS + ASSOC.<br>675 EAST 500 SOUTH, SUITE 400<br>SALT LAKE CITY, UT 84102   | C/O MIKE BUEHNER<br>mbuehner@reaveley.com<br>(801)486-3883       |
| <b>MECHANICAL ENGINEER</b><br>COLVIN ENGINEERING ASSOCIATES<br>244 WEST 300 NORTH, SUITE 200<br>SALT LAKE CITY, UT 84103 | C/O STEVE CONNOR<br>sconnor@ceaa-ut.com<br>(801)322-2400         |
| <b>ELECTRICAL ENGINEER</b><br>SPECTRUM ENGINEERS<br>324 S STATE STREET, SUITE 400<br>SALT LAKE CITY, UT 84111            | C/O DAVE WESEMANN<br>dew@spectrum-engineers.com<br>(801)328-5151 |
| <b>CIVIL ENGINEER</b><br>TALISMAN CIVIL CONSULTANTS<br>5217 S STATE STREET, SUITE 200<br>MURRAY, UT 84107                | C/O RYAN CATHEY<br>ryan@talismancivil.com<br>(801)743-1300       |
| <b>LANDSCAPE ARCHITECT</b><br>CRSA SITE STUDIO<br>649 EAST SOUTH TEMPLE<br>SALT LAKE CITY, UT 84102                      | C/O KELLY GILLMAN<br>kelly@crsa-us.com<br>(801)355-5915          |
| <b>MATERIALS HANDLING CONSULTANT</b><br>TROMMER & ASSOCIATES<br>150 SPRINGSIDE DR, UNIT A-100<br>AKRON, OH 44333         | C/O STEVE TROMMER<br>strommer@trommerinc.com<br>(330)668-3700    |



DFCM PROJECT NUMBER: 17138310

REFERENCE ONLY  
 NOT FOR CONSTRUCTION

**UTAH STATE ARCHIVES  
 EXPANSION PROJECT**  
 346 S RIO GRANDE STREET  
 SALT LAKE CITY, UT 84101

**UTAH STATE ARCHIVES**  
 346 S RIO GRANDE STREET  
 SALT LAKE CITY, UT 84101

|               |   |
|---------------|---|
| <b>LEGEND</b> |   |
| ---           | (E) TO REMAIN (GRAY LINE)   |
| - - - -       | (E) TO BE DEMOLISHED (DASHED LINE)  |
| - - - -       | (N) CONSTRUCTION (BLACK LINE)   |
| -----         | LIMIT OF CONSTRUCTION LINE  |
| [Pattern]     | CMU-1- SPLIT-FACE CONCRETE MASONRY UNIT, COLOR TO MATCH (E) METAL PANELS. |
| [Pattern]     | CMU-2- HONED-FACE CONCRETE MASONRY UNIT, COLOR TO MATCH (E) METAL PANELS. |
| [Pattern]     | MASONRY WALL TO MATCH EXISTING CMU-BRICK BANDING.                         |

|                         |                     |                         |
|-------------------------|---------------------|-------------------------|
| CD                      | 07/17/2017          | FILE NAME: filename.rvt |
| DD                      | 06/14/2017          |                         |
| PROJECT NUMBER: B16-068 |                     |                         |
| DRAWN BY: Author        | CHECKED BY: Checker |                         |

EXTERIOR ELEVATIONS

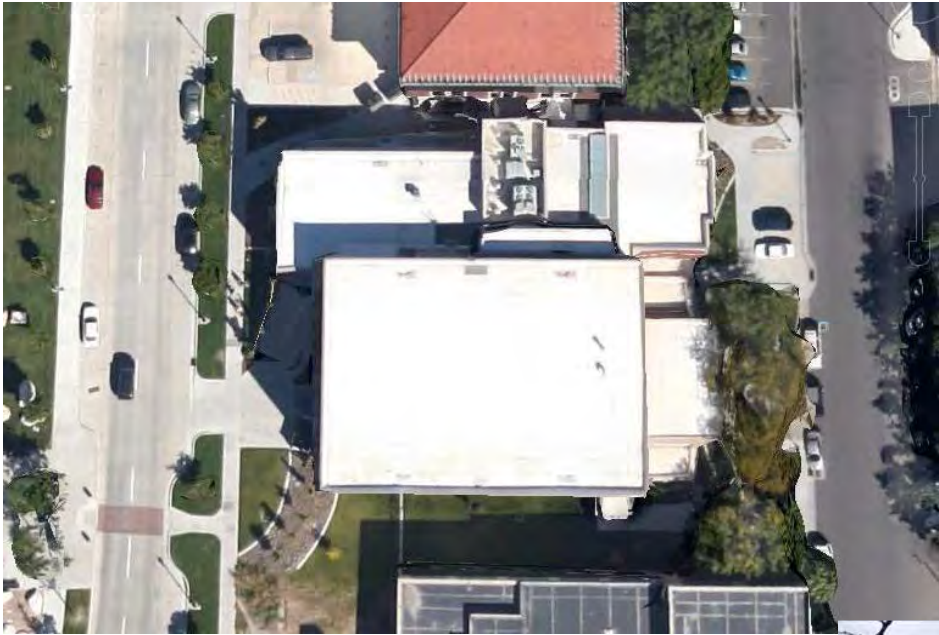
**PA102**



**C1 WEST ELEVATION**  
 1/8" = 1'-0"



**A1 SOUTH ELEVATION**  
 1/8" = 1'-0"



Northeast corner



East side

Lobby from mezzanine



Lobby



Lobby ceiling