

MHTN
ARCHITECTS
Hastings-Chivetta
Interior Architecture • Landscape Architecture



Interior View - Lobby

Dixie State - Human Performance Building





Interior View - Second Level Lounge

Dixie State - Human Performance Building

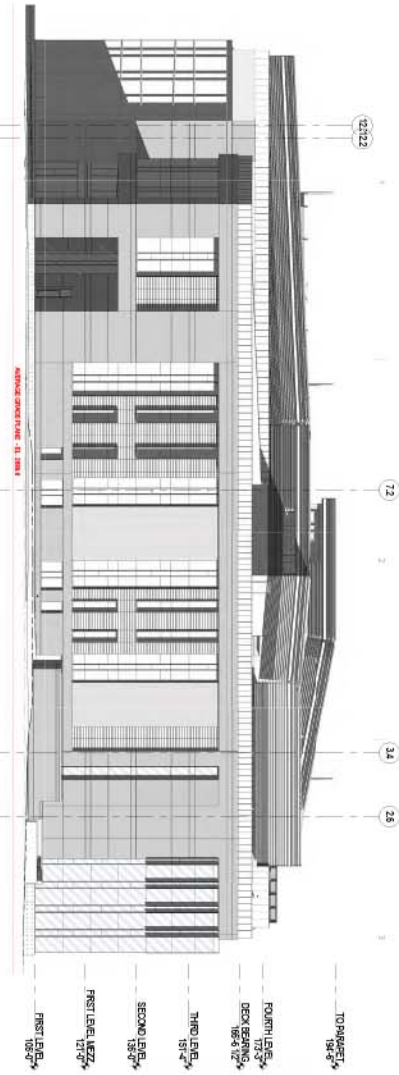


MHTN
ARCHITECTS

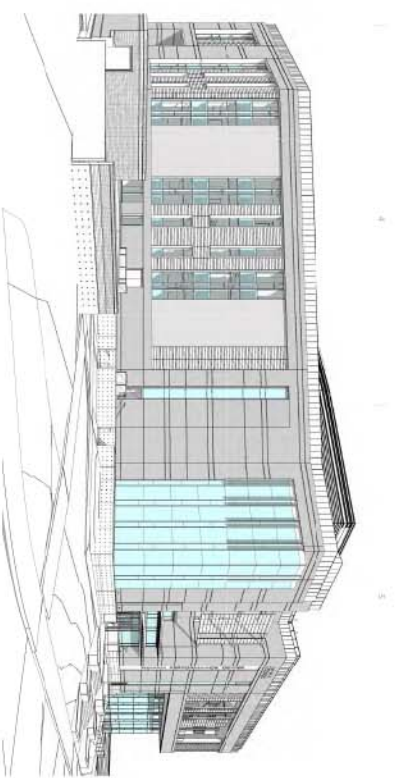
Hastings+Chivetta

ARCHITECTURE • PLANNING • ENGINEERING

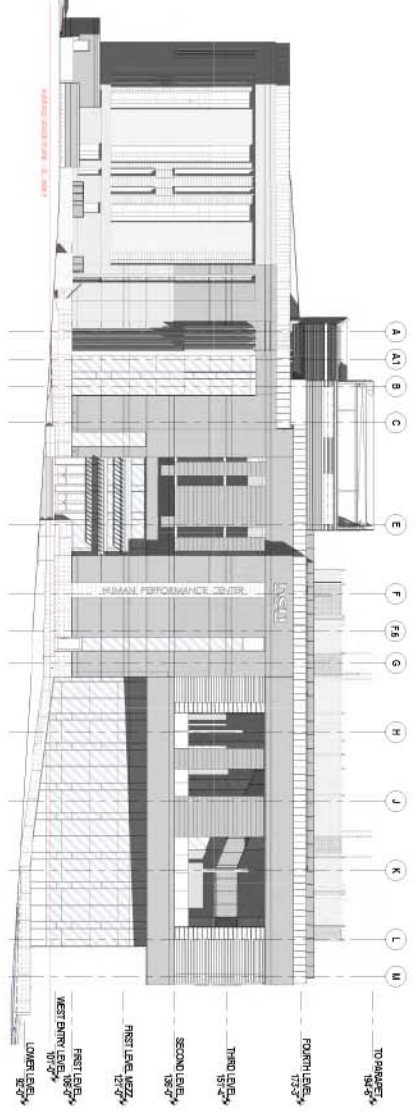
Copyright 2018 Hastings & Chivetta Architects, Inc.
March 21, 2018



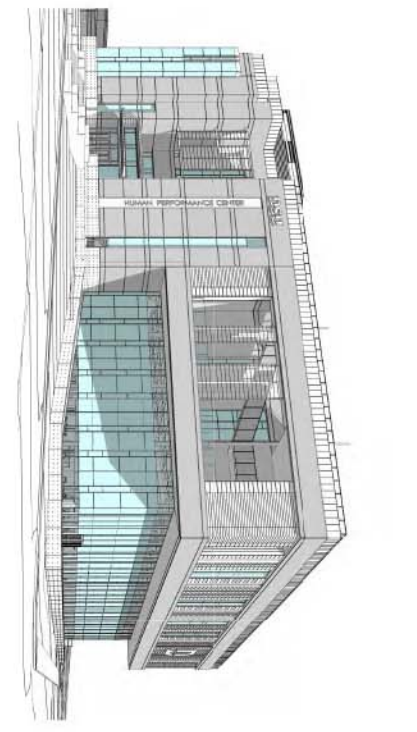
A1 OVERALL NORTH ELEVATION
SCALE: 1/8" = 1'-0"



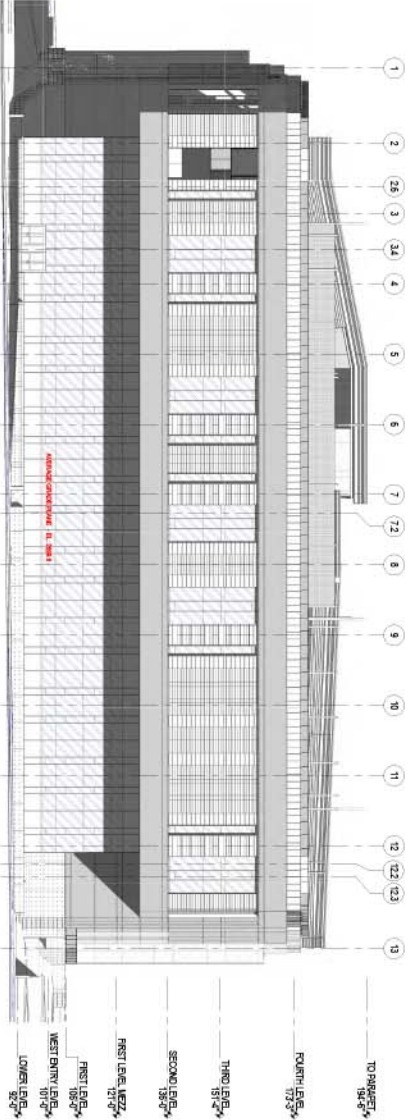
A5 PERSPECTIVE - NORTHWEST (FOR REFERENCE ONLY)
SCALE:



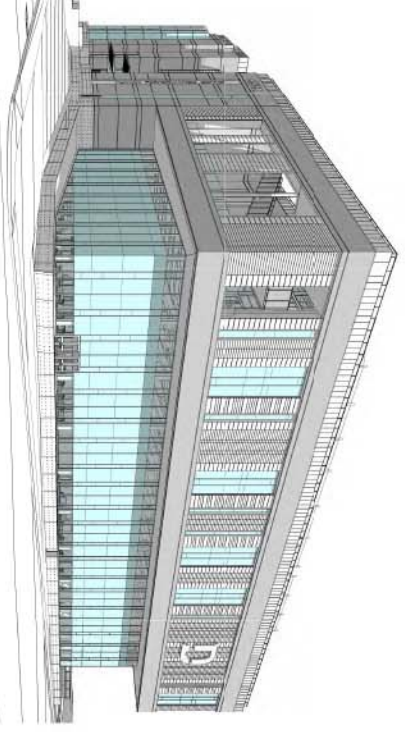
C1 OVERALL WEST ELEVATION
SCALE: 1/8" = 1'-0"



C5 PERSPECTIVE - WEST (FOR REFERENCE ONLY)
SCALE:



E1 OVERALL SOUTH ELEVATION
SCALE: 1/8" = 1'-0"



E5 PERSPECTIVE - SOUTHWEST (FOR REFERENCE ONLY)
SCALE:

MHTN ARCHITECTS
MHTN Architects, Inc.
401 East South Temple
Salt Lake City, Utah 84143
Tel: (801) 525-8177
www.mhtn.com

Hastings+Chivetta
ARCHITECTURE - PLANNING - ENGINEERING
4227 FARMINGTON BLVD. SUITE 200 | SALT LAKE CITY, UT 84119
Tel: (801) 487-2200
www.hastingschivetta.com

DIXIE STATE UNIVERSITY
HUMAN PERFORMANCE CENTER
225 S UNIVERSITY AVE.
ST. GEORGE, UT 84770

DESIGNED BY: MHTN ARCHITECTS
ARCHITECTURE - PLANNING - ENGINEERING
4227 FARMINGTON BLVD. SUITE 200 | SALT LAKE CITY, UT 84119
Tel: (801) 487-2200
www.hastingschivetta.com



CHAD N. MADSEN
Professional Engineer
License No. 46721
Mechanical
State of Utah

A200a

OVERALL BUILDING ELEVATIONS

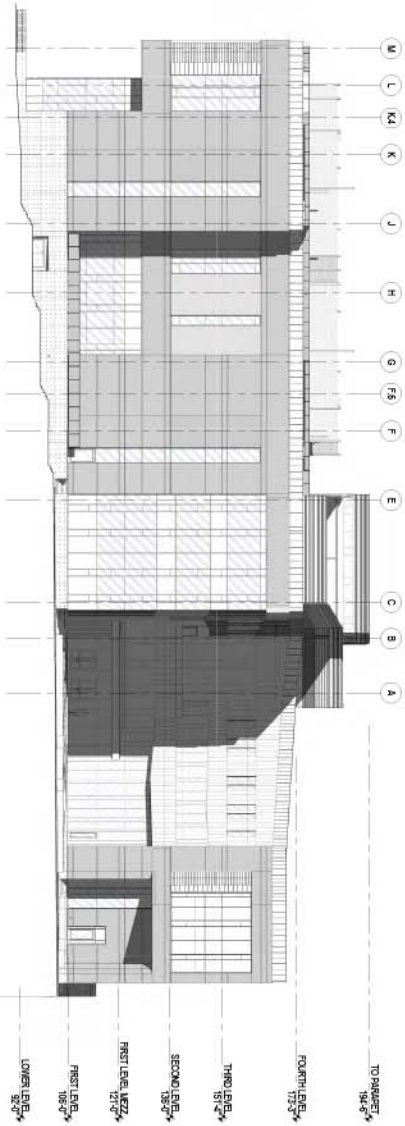
DATE: 04/27/2016
SCALE: 1/8" = 1'-0"

PROJECT: DIXIE STATE UNIVERSITY HUMAN PERFORMANCE CENTER

DESIGNED BY: MHTN ARCHITECTS

E1
SCALE: 1/8" = 1'-0"

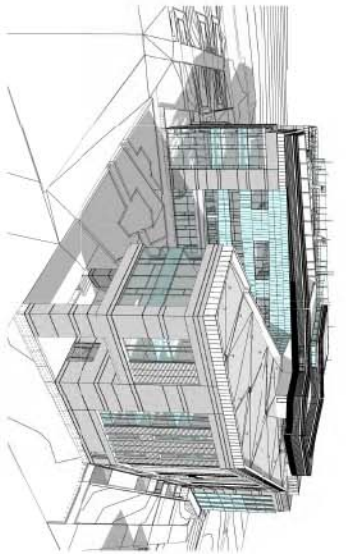
OVERALL EAST ELEVATION



B2
SCALE:

AERIAL - NORTHEAST

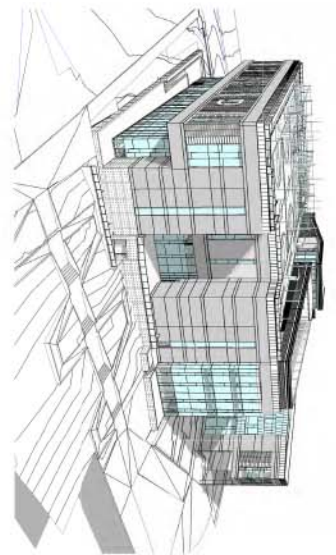
(FOR REFERENCE ONLY)



B4
SCALE:

AERIAL - SOUTHEAST

(FOR REFERENCE ONLY)



C2
SCALE:

AERIAL - NORTH

(FOR REFERENCE ONLY)



C4
SCALE:

AERIAL - WEST

(FOR REFERENCE ONLY)



E4
SCALE:

PERSPECTIVE - EAST

(FOR REFERENCE ONLY)



A200b

OVERALL BUILDING ELEVATIONS

DATE: 04/27/2016
TIME: 12:42:42 PM

DATE: 04/27/2016
TIME: 12:42:42 PM



DATE: 04/27/2016
TIME: 12:42:42 PM

DIXIE STATE UNIVERSITY
HUMAN PERFORMANCE CENTER
225 S UNIVERSITY AVE.
ST. GEORGE, UT 84770

MHTN
ARCHITECTS
MHTN Architects, Inc.
501 East South Temple
Salt Lake City, Utah 84143
Tel: 801.533.1111
Fax: 801.533.1111
www.mhtn.com

Hastings+Chivetta
ARCHITECTURE • PLANNING • ENGINEERING
422 East Main, Suite 200, 1st Floor, Provo, Utah
Tel: 801.733.1111
Fax: 801.733.1111
www.hastingschivetta.com

