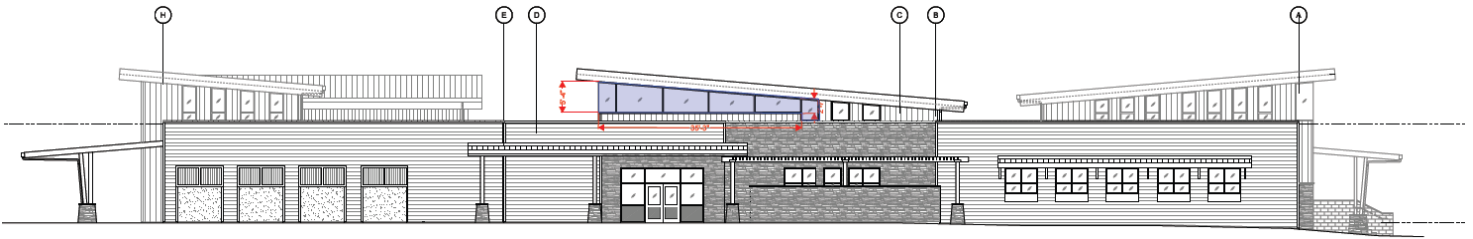
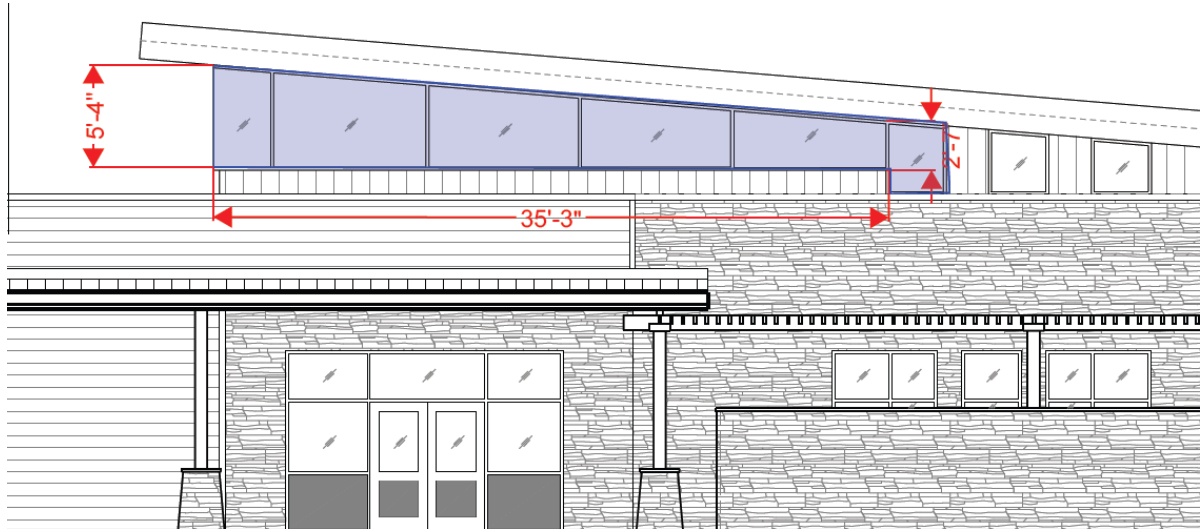


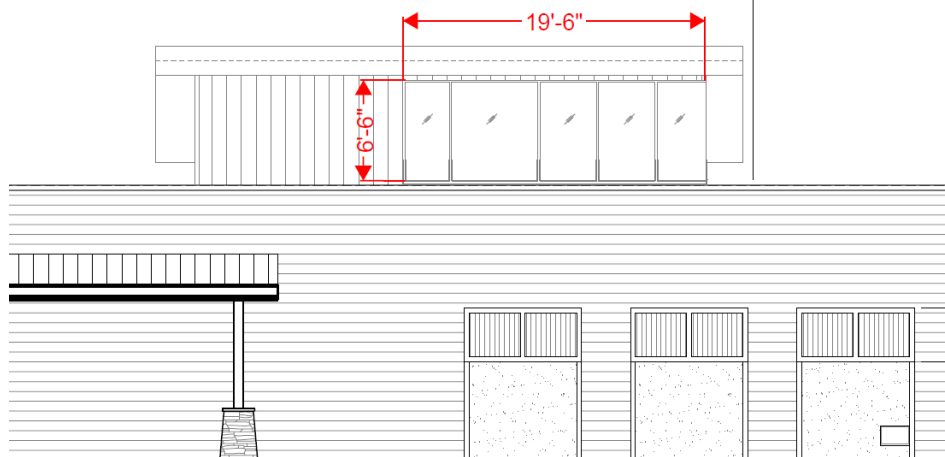
Santa Clarita Sheriff's Station



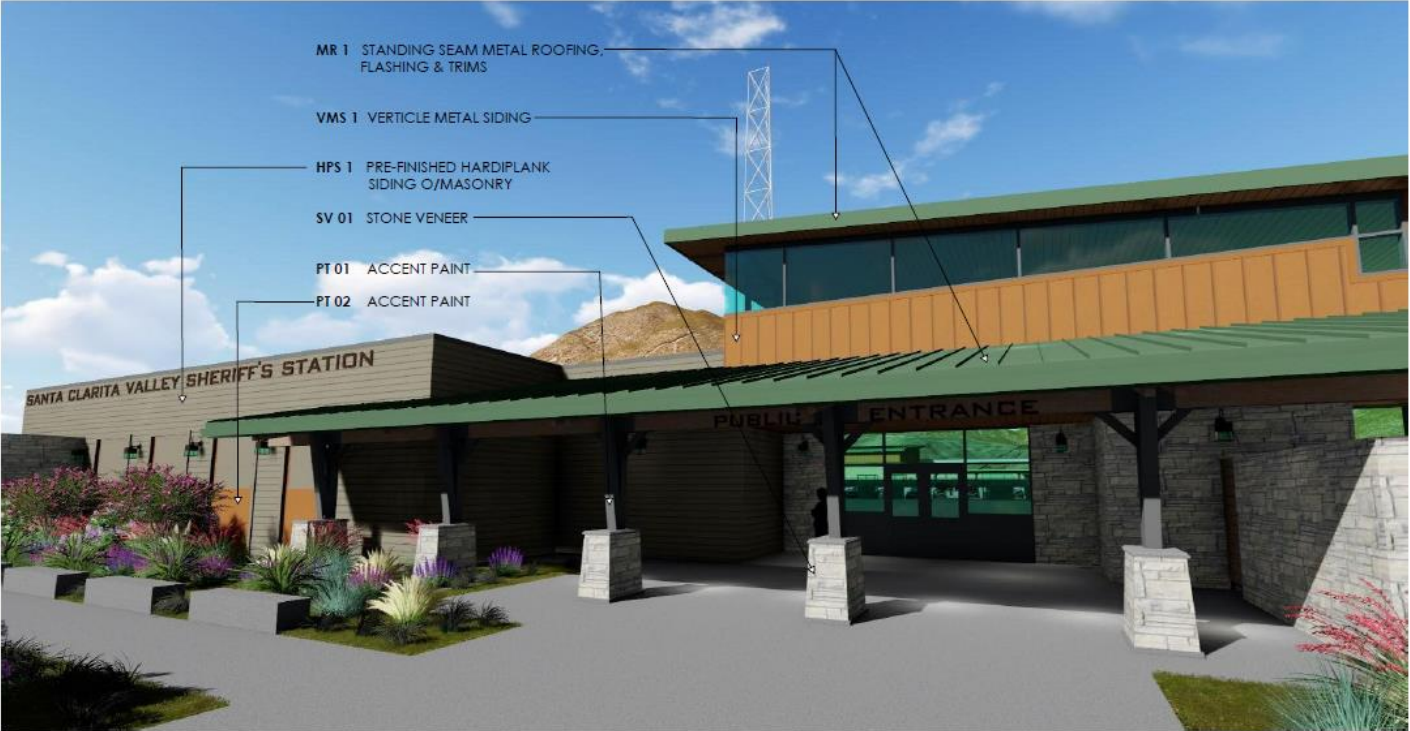
1) Windows: Identified in red



The identified window locations for potential artwork are the upper set of lobby windows that wrap around the same tower. The connected windows face both east and south.



Exterior Color Board



MR 1 Standing Seam Metal Roofing



PT 01 Accent Paint



VMS 1 Vertical Metal Siding



PT 02 Accent Paint



HPS 1 Pre-Finished Hardiplank Siding
Cedarmill Woodgrain



SV 01 Stone Veneer - Eldorado Stone Fieldledge Padova

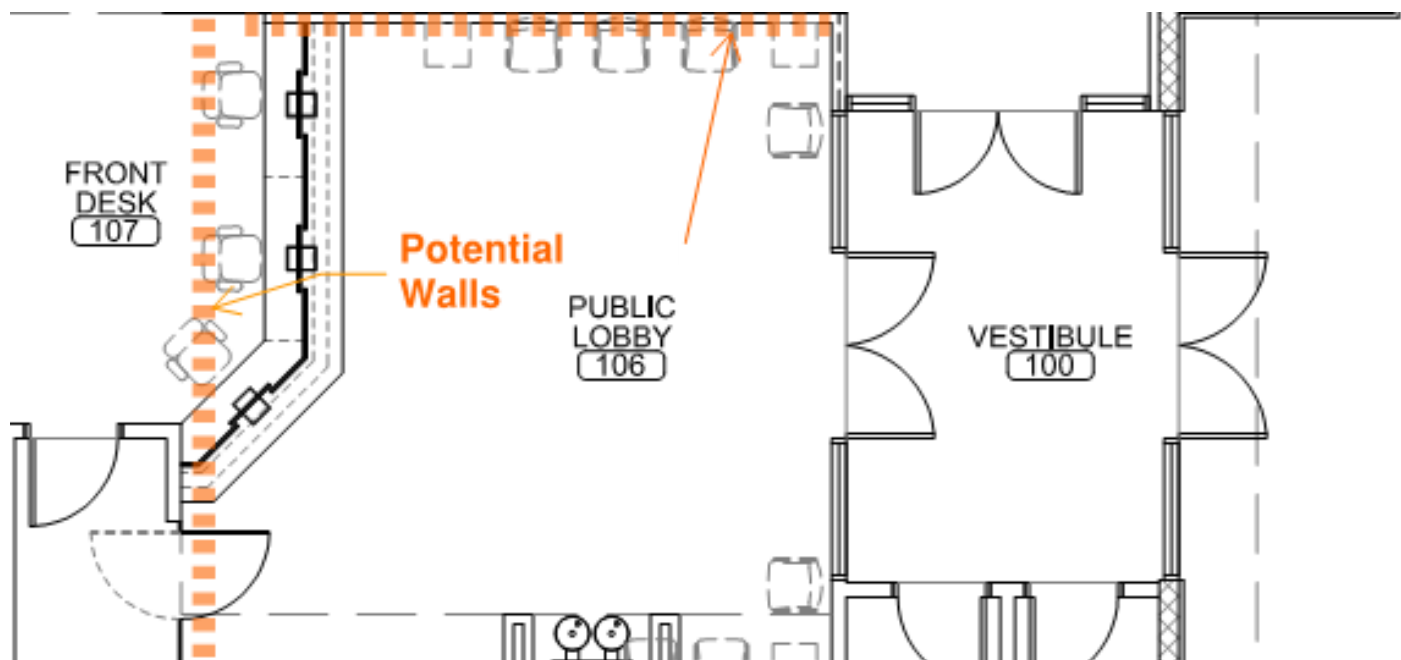
CMU 2 Concrete Unit
Masonry Accent



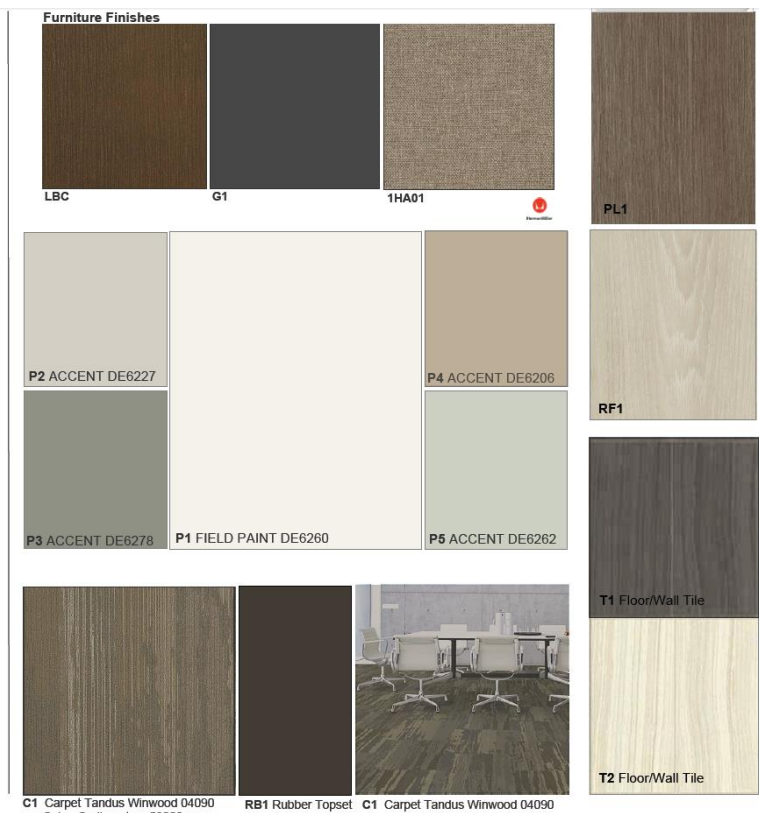
CMU 1 Concrete Unit
Masonry Field

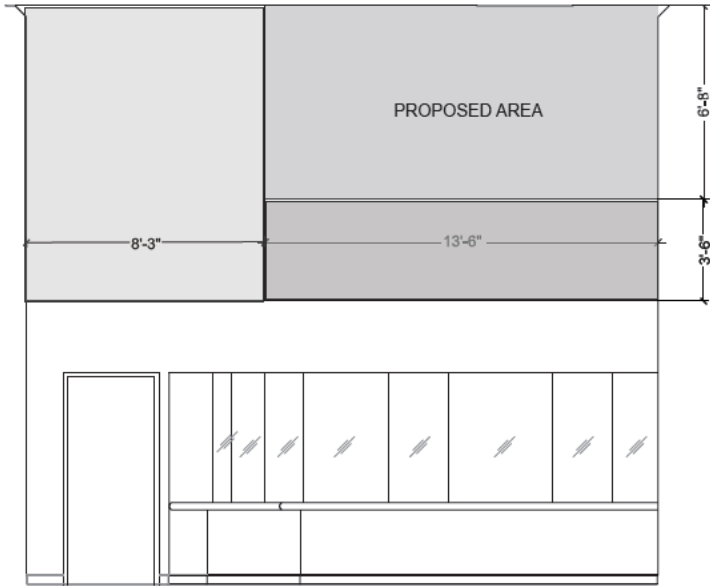


2) Lobby: Identified in orange



Interior Color Board





LOBBY 106

WEST



