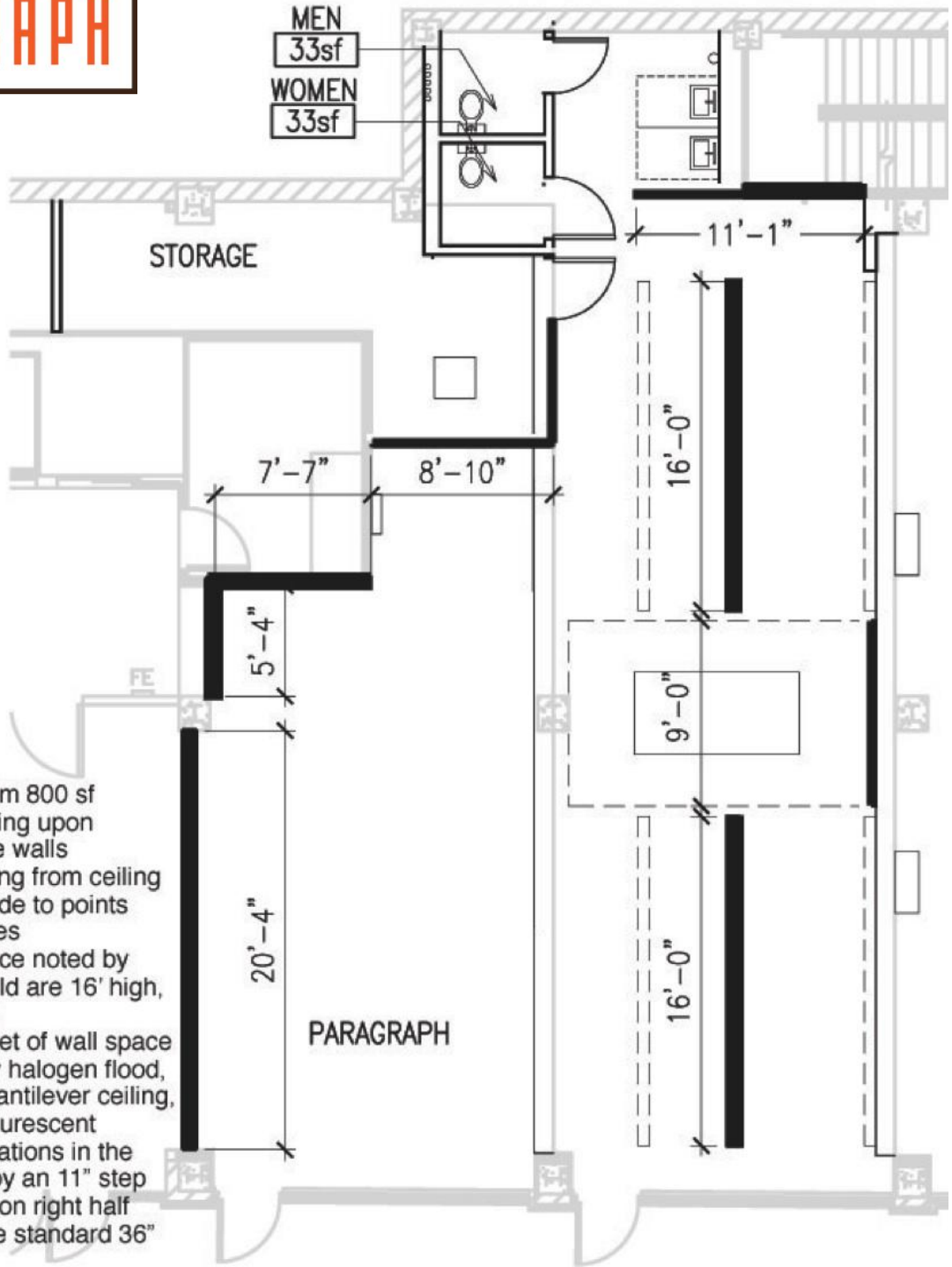
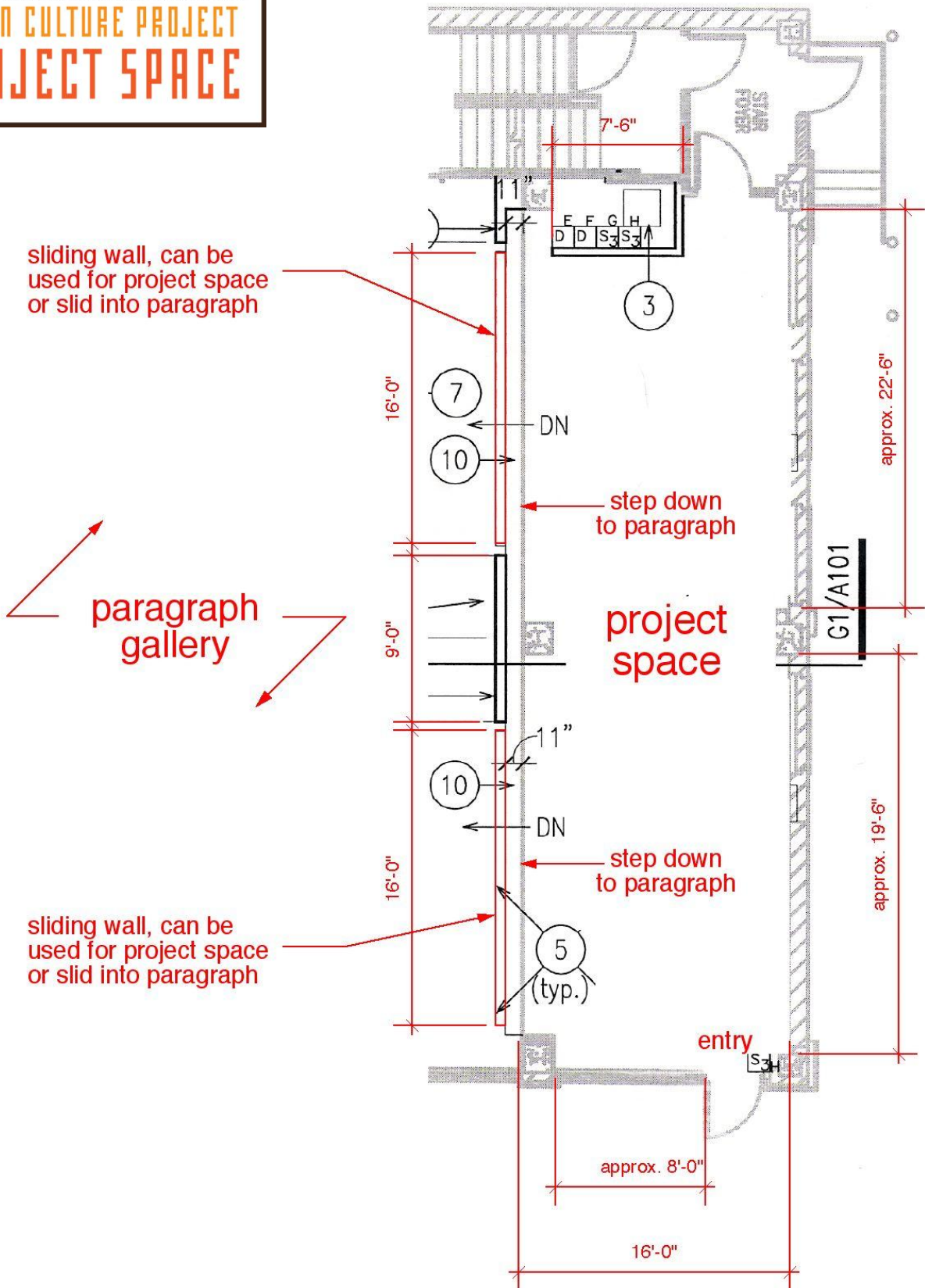


CHARLOTTE STREET  
 URBAN CULTURE PROJECT  
**PARAGRAPH**



- gallery ranges from 800 sf to 1400 sf, depending upon position of movable walls
- movable walls hang from ceiling mounted tracks, slide to points noted by dotted lines
- hangable wall space noted by bold lines, extra bold are 16' high, bold are 8-10' high
- up to 133 linear feet of wall space
- all lighting is 300w halogen flood, except under the cantilever ceiling, where recessed fluorescent
- there are two elevations in the space, separated by an 11" step higher elevation is on right half
- both entrances are standard 36" doors
- polished concrete floors

**CHARLOTTE STREET**  
**URBAN CULTURE PROJECT**  
**PROJECT SPACE**



sliding wall, can be used for project space or slid into paragraph

paragraph gallery

sliding wall, can be used for project space or slid into paragraph

step down to paragraph

project space

step down to paragraph

entry

approx. 8'-0"

16'-0"

approx. 22'-6"

G1/A101

approx. 19'-6"

7'-6"

16'-0"

9'-0"

16'-0"

F F G H  
D D S<sub>3</sub> S<sub>3</sub>

DN

DN

5 (typ.)

11"

1"

STAR PORTER

3

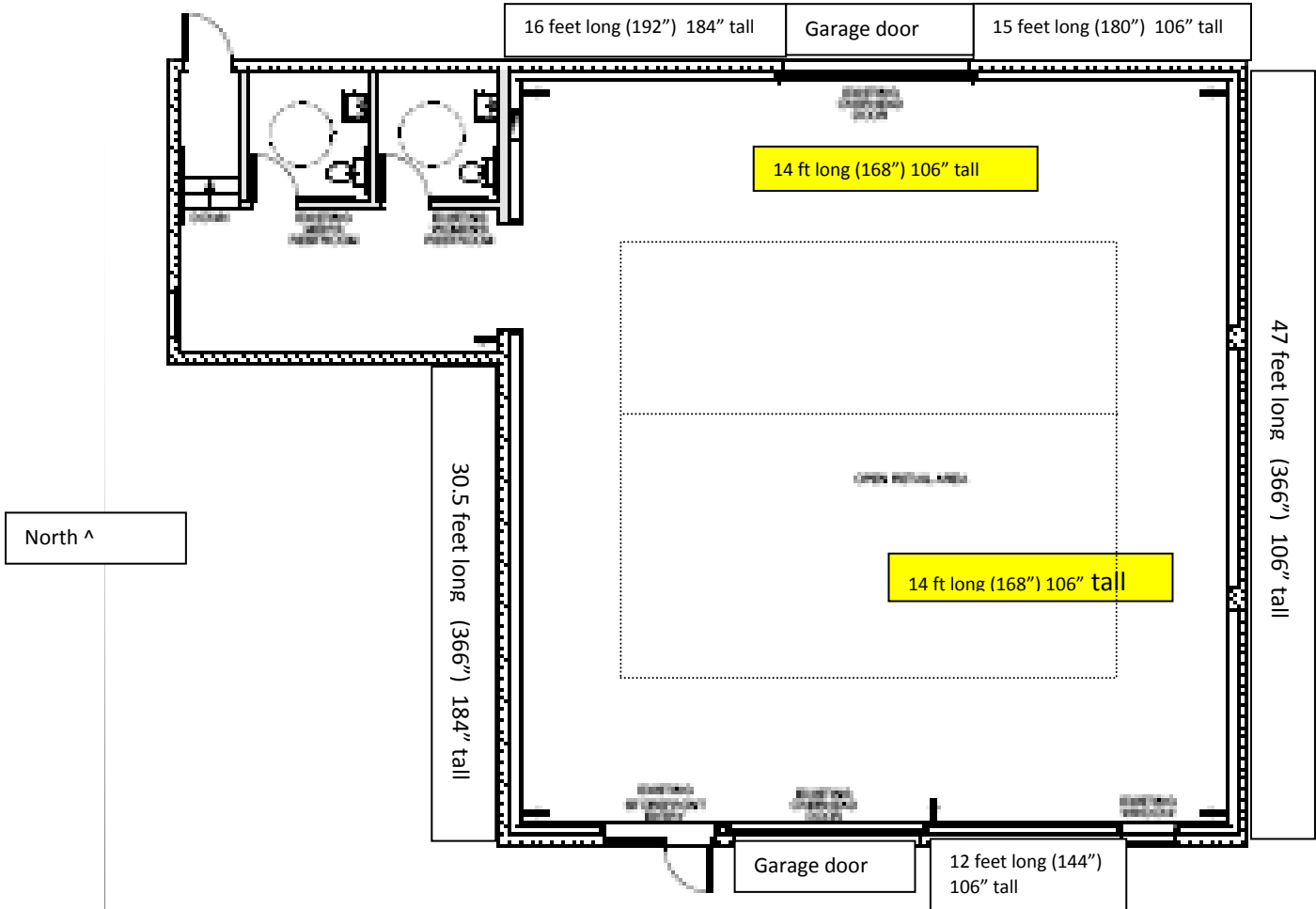
7

10

10

S<sub>3</sub>H

CHARLOTTE STREET  
 URBAN CULTURE PROJECT  
 LA ESQUINA



North ^

Parking lot located to south of gallery, with stairs leading up to gallery. Garage door on north side of gallery allows for loading in at street level.

Yellow walls on floorplan are moveable walls. They can be moved, but must remain parallel to as show (running east-west; not north-south.)

Dashed line of floorplan indicated track lighting grid.