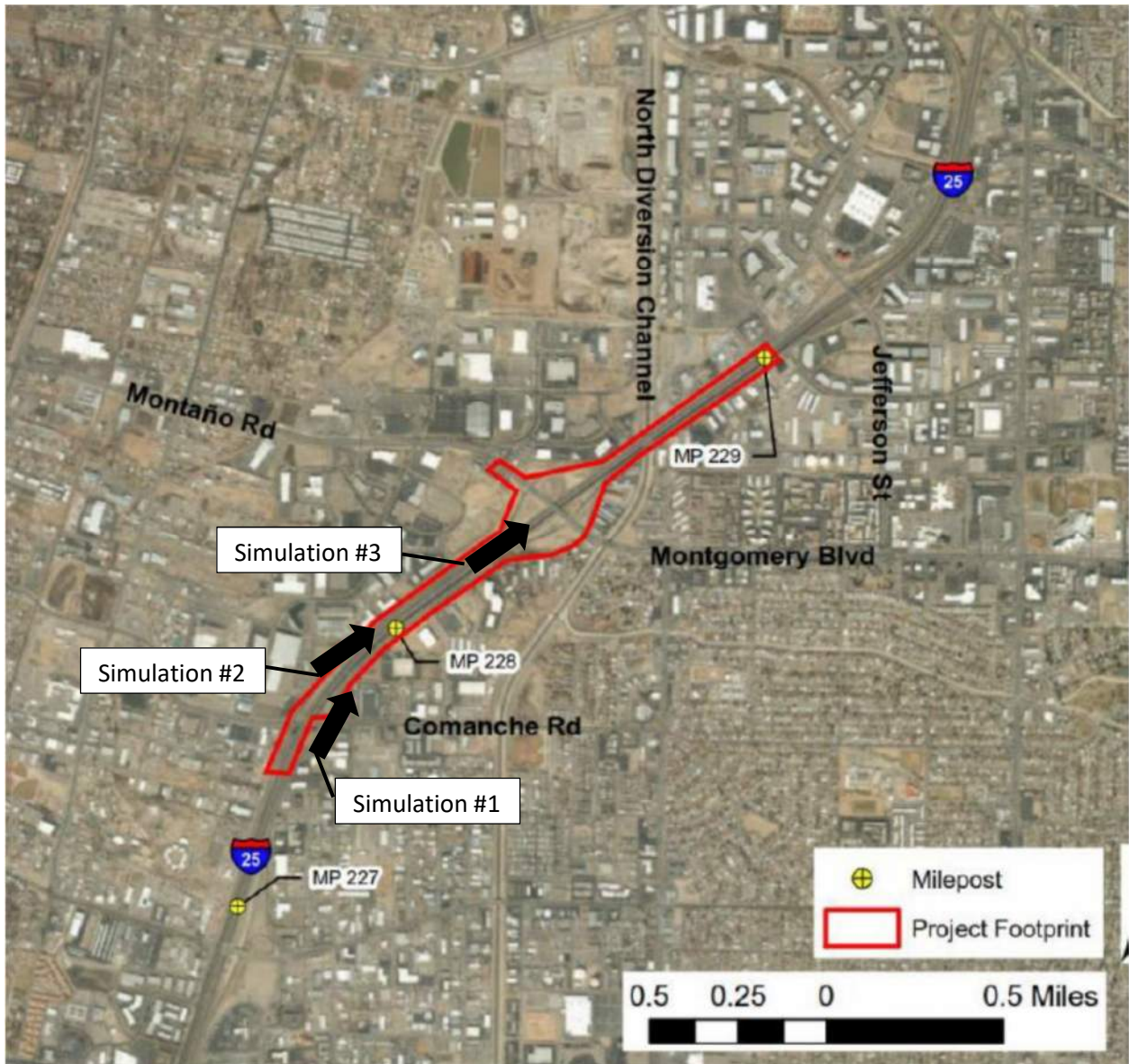
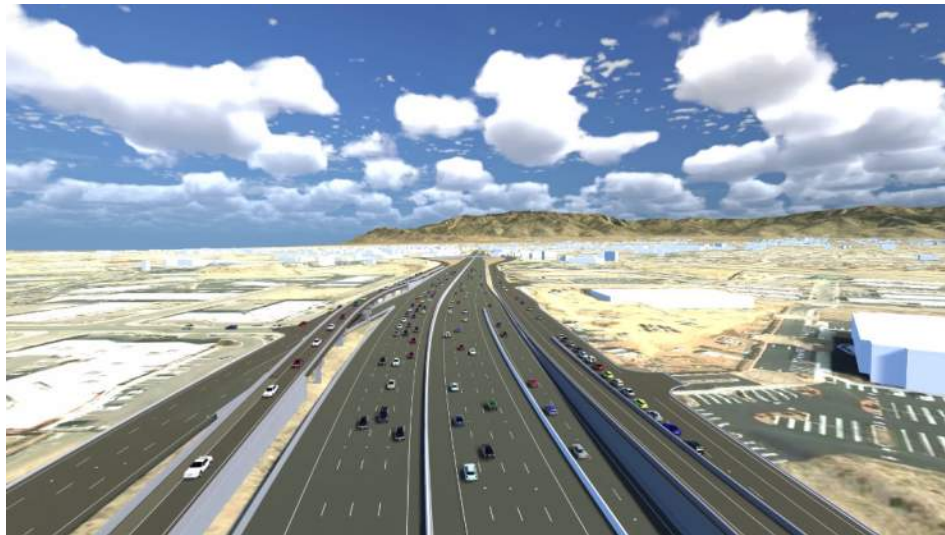


NMDOT CN-A301900 I-25 Montgomery Interchange Aesthetic Treatment Project

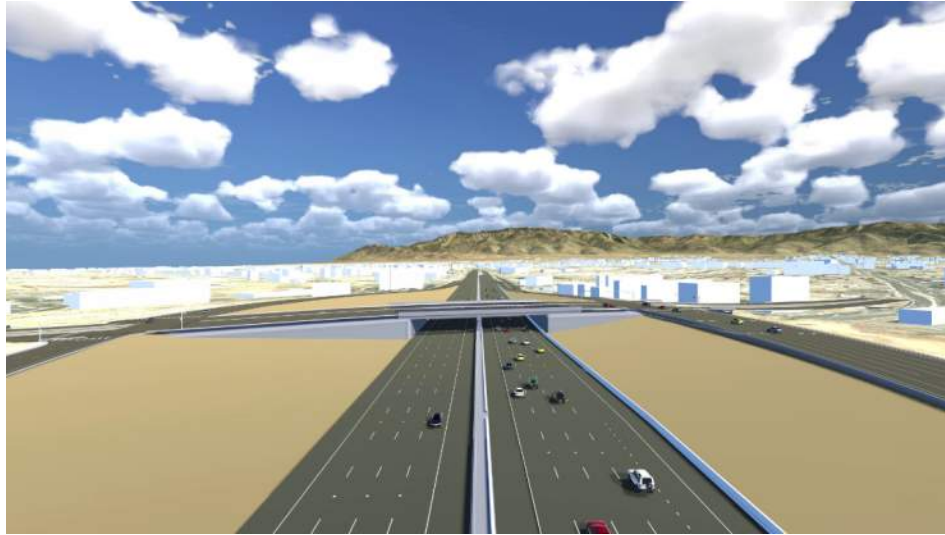




Simulation #1 – Computer generated simulation of the ultimate project.  
The view is looking North along the Northbound Frontage Road and Comanche On-Ramp showing the braided ramp bridge.



Simulation #2 - Simulation of the ultimate project.  
The view is looking North on Interstate 25 with the Southbound braided ramp bridge to the left and Northbound ramp and frontage road to the right.



Simulation #3 - Simulation of the ultimate project.  
The view is looking North on Interstate 25 with the proposed Montgomery Blvd. Bridge crossing the interstate.