

Possible art installation locations:

Entry Path: 24' (long) x 9.5' (wide) - Suitable for possible integral concrete-based artwork

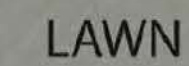
Planting area adjacent to Entry Path: 15' (deep) x 16' (wide) - Suitable for possible sculpture

Sliding Perforated Metal Wall Panels: two 8' (high) x 12' (wide). So 8' (high) x 24' (wide) when together. Suitable for applied surface decoration.

Interior Lobby wall: 8' (high) x 15' (wide). There will be a bench seat here so assume any art piece would be at least 2' above finish floor. The ceiling height is 10'.

## EAST 15TH AVENUE

## EXISTING CAMPUS RESIDENCES



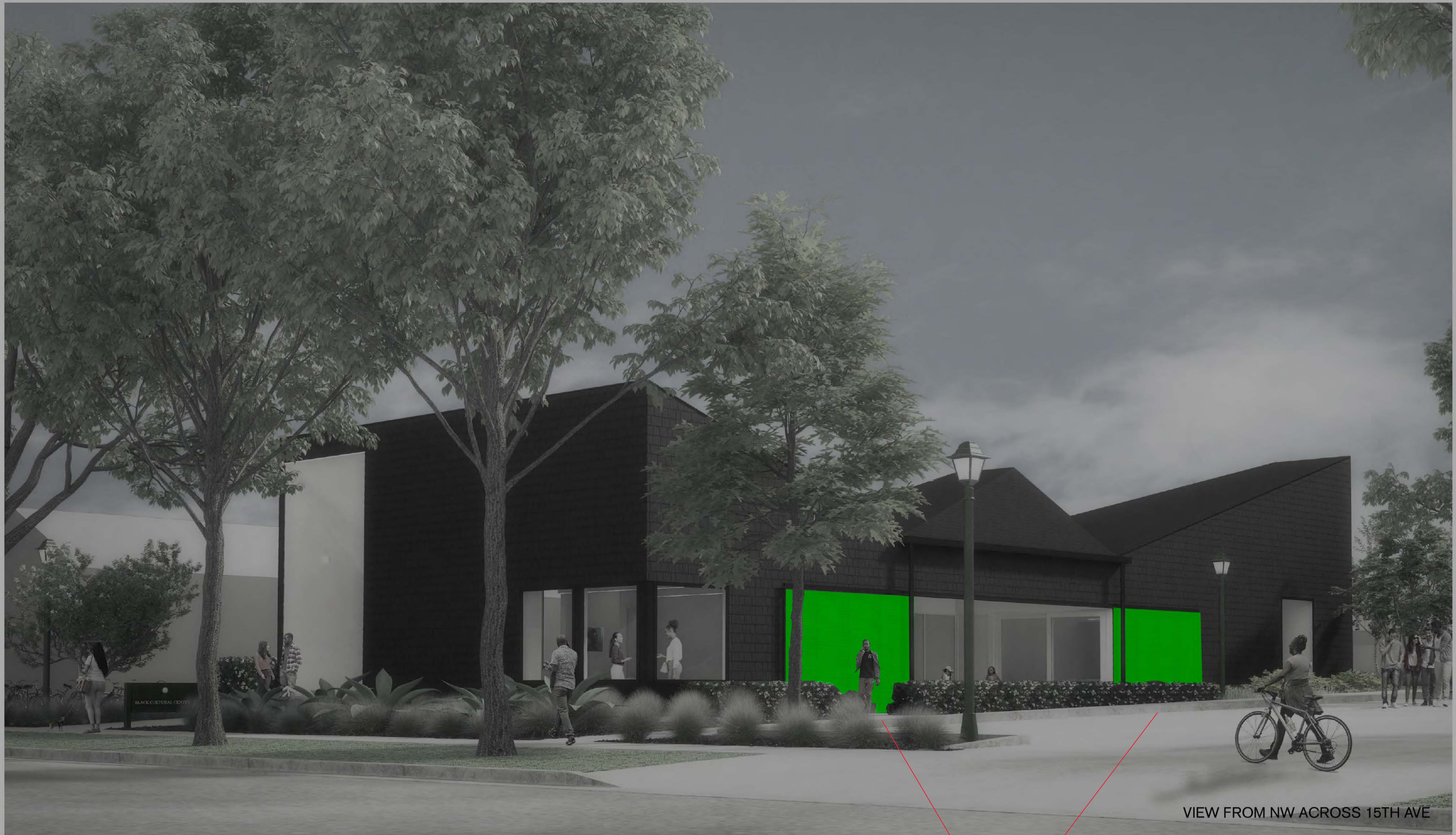
STOP

- 1 STREET TREES
- 2 MAIN ENTRY
- 3 LAYERED PLANTINGS
- 4 THE "PORCH"
- 5 RAMP
- 6 TRASH ENCLOSURE
- 7 INFILTRATION PLANTER
- 8 ORNAMENTAL TREES
- 9 ACCESSIBLE EGRESS
- 10 BIKE PARKING

ARCHITECTURE  
BUILDING  
CULTURE

**M**AXINE  
HOERR SCHAUDT

# Sliding Perforated Metal Wall Panels



**O BLACK CULTURAL CENTER**  
UNIVERSITY OF OREGON DESIGN DEVELOPMENT | OCTOBER 10, 2018

Sliding Perforated  
Metal Wall Panels





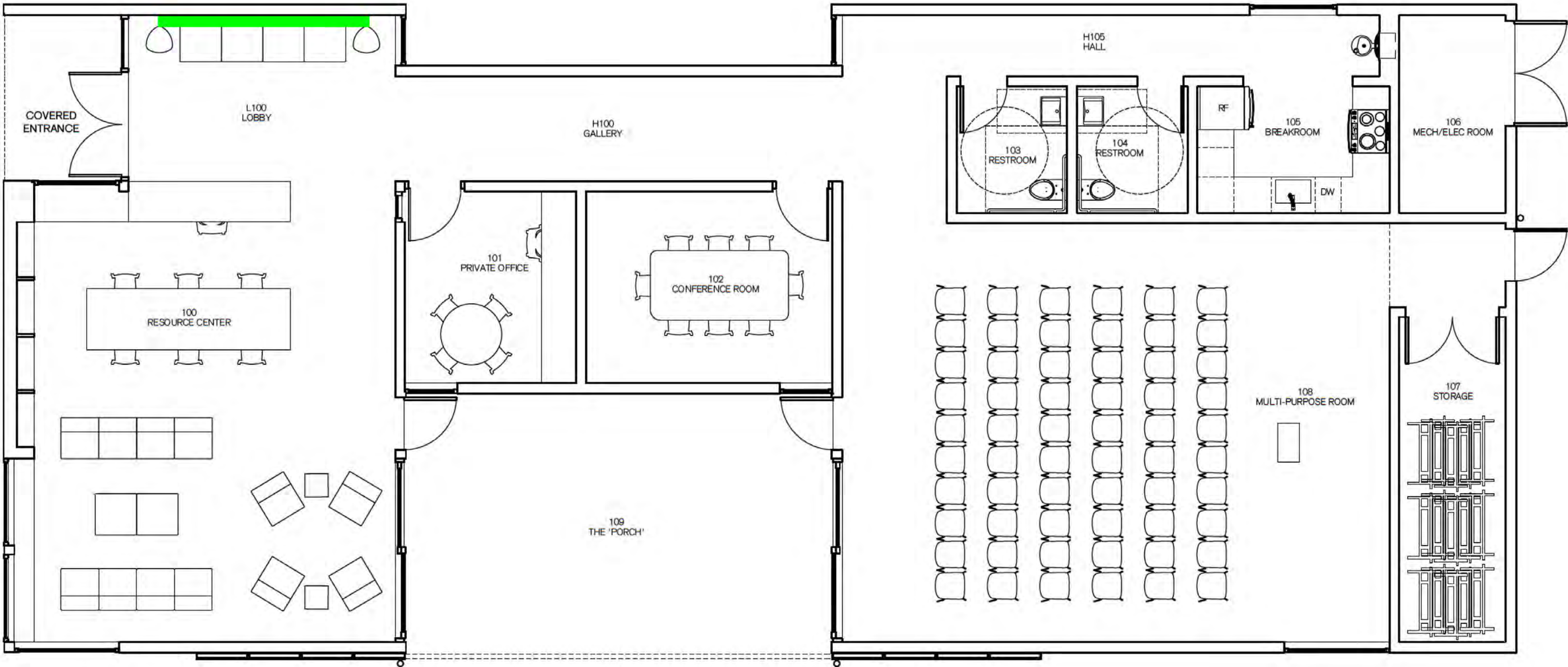
VIEW OF MAIN ENTRANCE

Entry Path

Planting area adjacent to Entry Path

FLOOR PLAN

Interior Lobby wall



FLOOR PLAN  
SCALE: 1/4" = 1'-0"

