

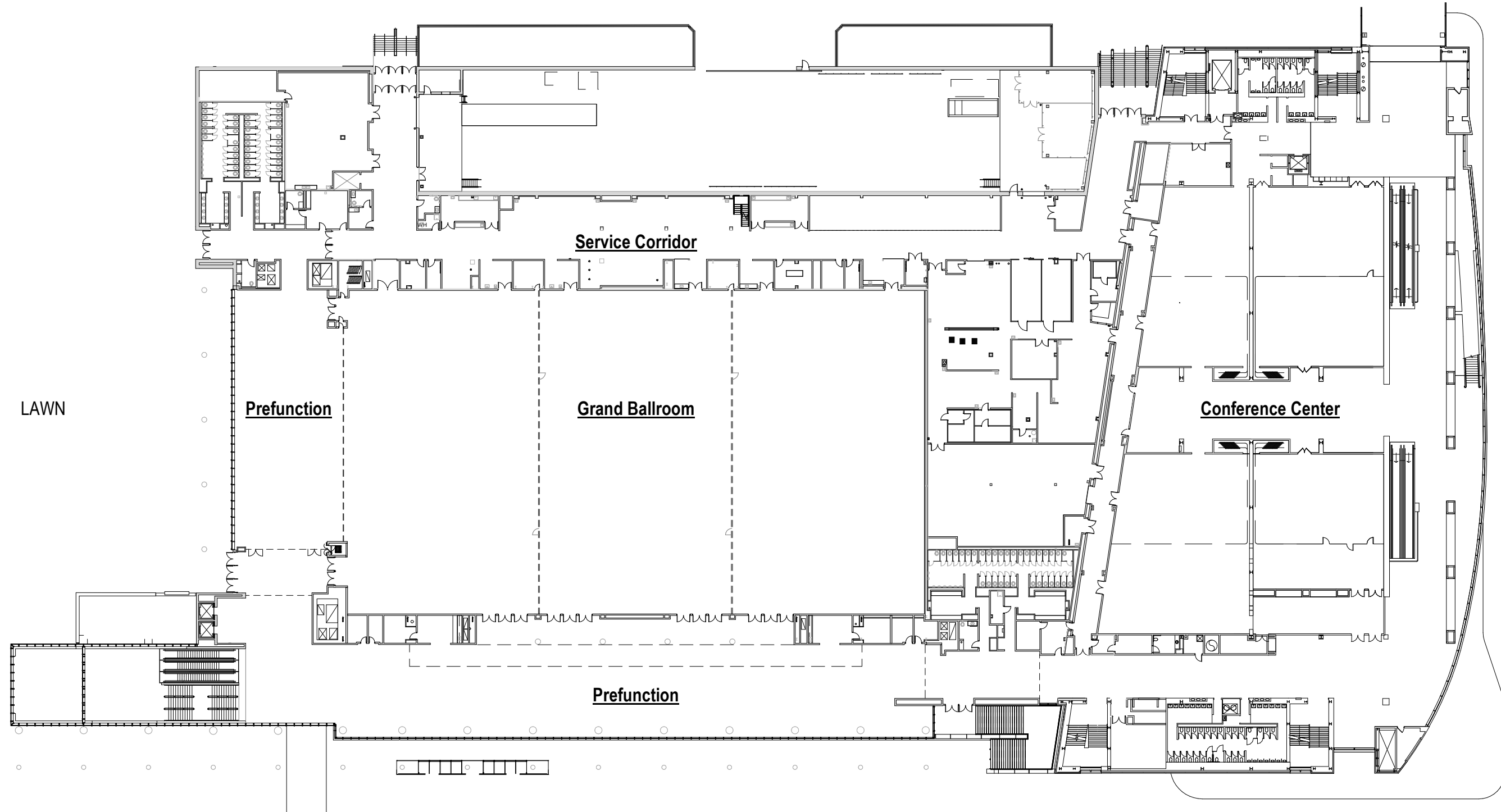
CONVENTION CENTER COMPLEX

GRAND BALLROOM

NEW LOEWS HOTEL



CENTRAL STREET



LAWN

Prefunction

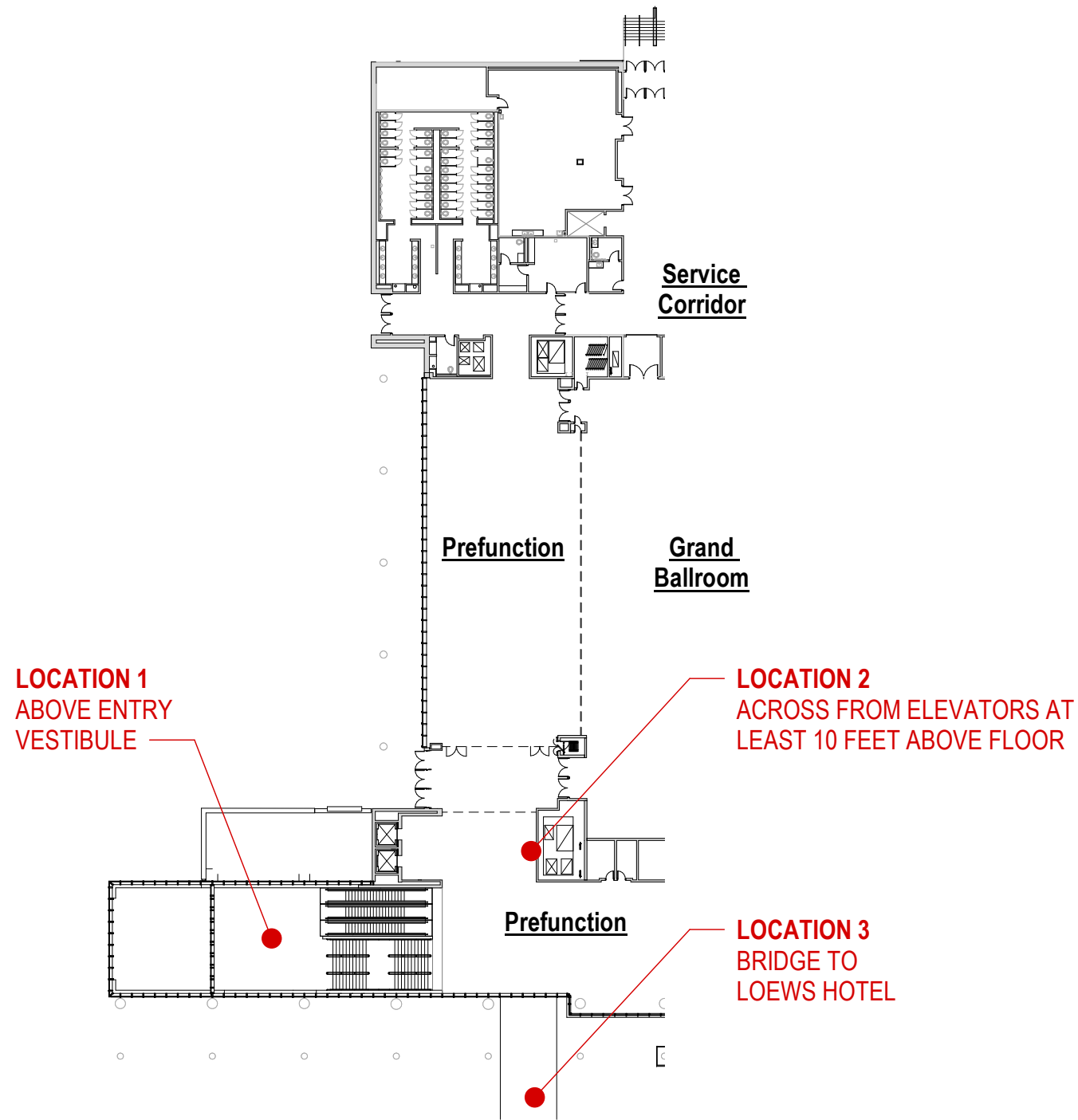
Grand Ballroom

Conference Center

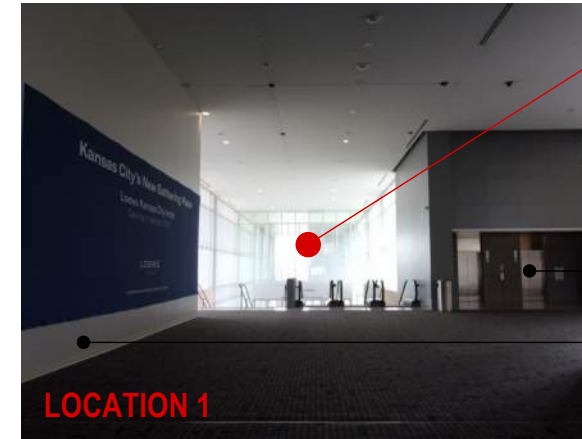
Prefunction

BRIDGE TO
LOEWS HOTEL

WYANDOTTE STREET

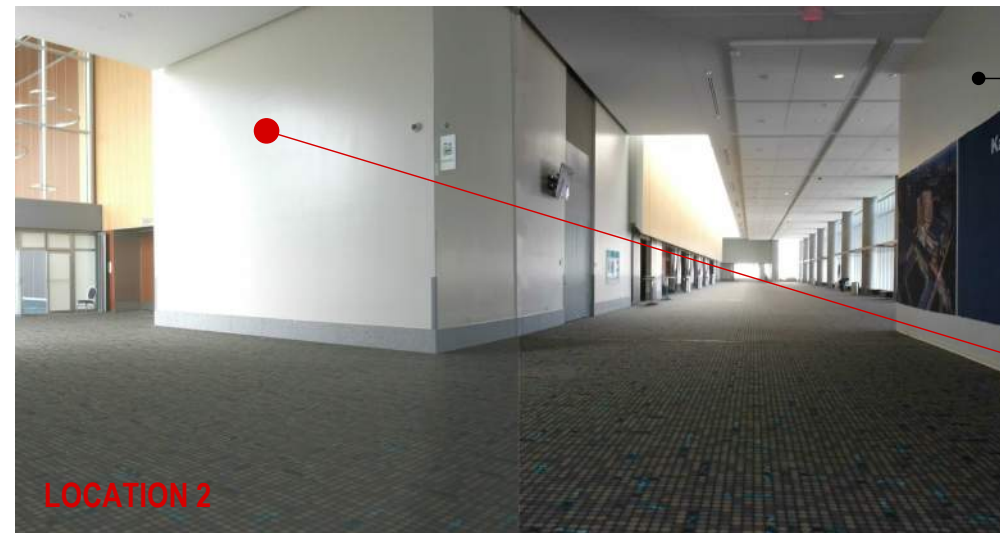


SUGGESTED LOCATIONS FOR ARTWORK



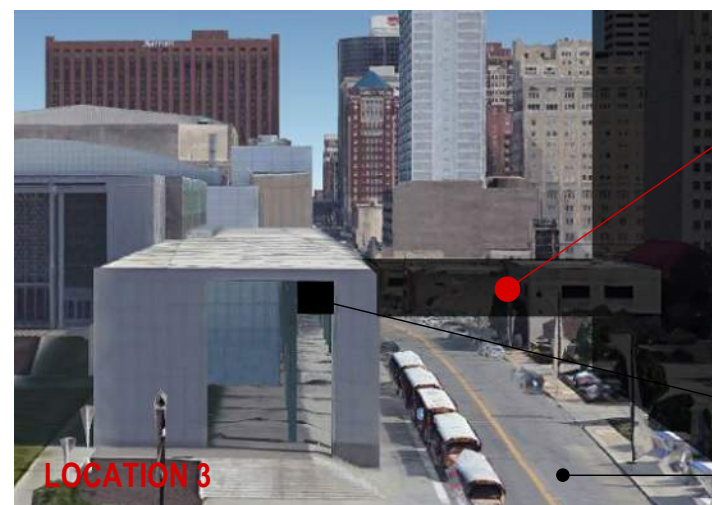
LOCATION 1
Ceiling area: 74' x 35' (length x width)
Ceiling height:
31'- 6" at Entry Level
20'- 6" at Ballroom Level

Elevators
Bridge Connection (Future)



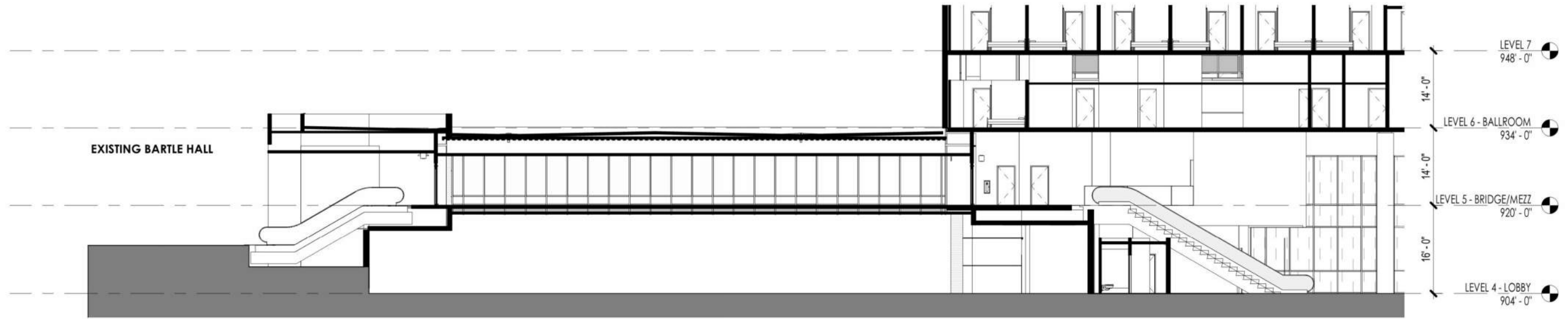
Bridge Connection (Future)

LOCATION 2
Wall dimensions:
20'- 6" x 24' (height x width)
Art shall be at least 10' above floor

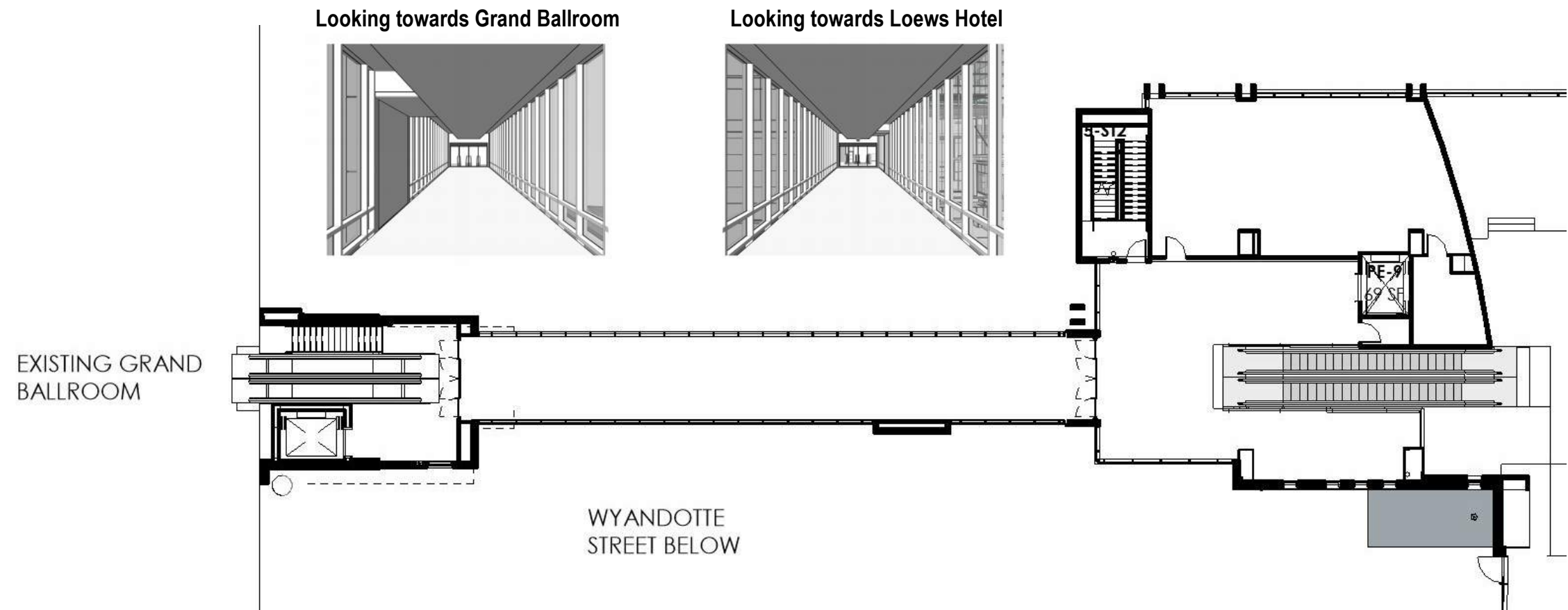


LOCATION 3
Bridge dimensions:
89'- 9" x 14' x 15'- 10" (exterior length x width x height)
97' x 12'- 10" (interior length x width)
Ceiling height: 10'- 9"
Artwork may be an interior or exterior installation

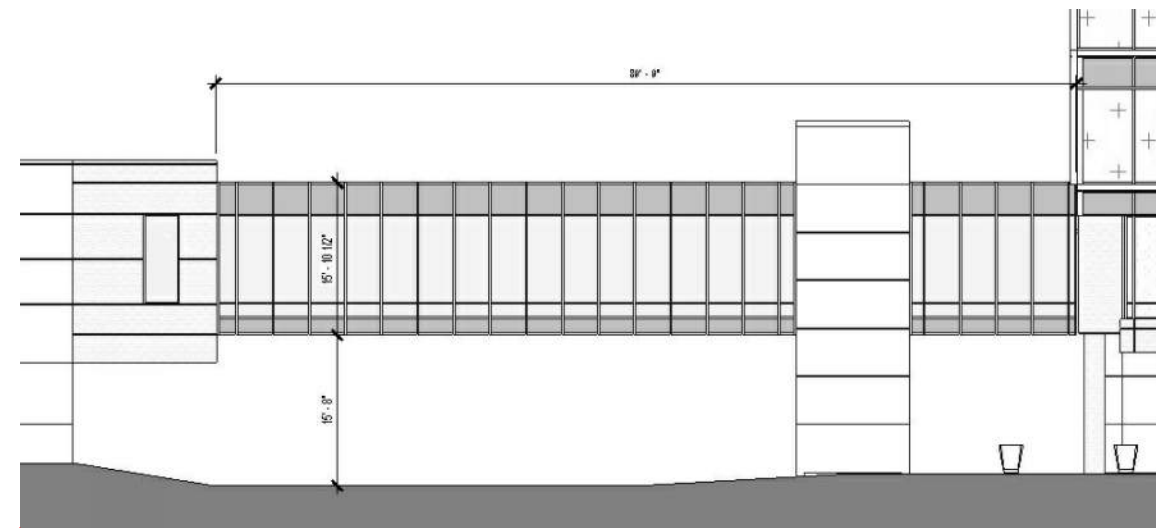
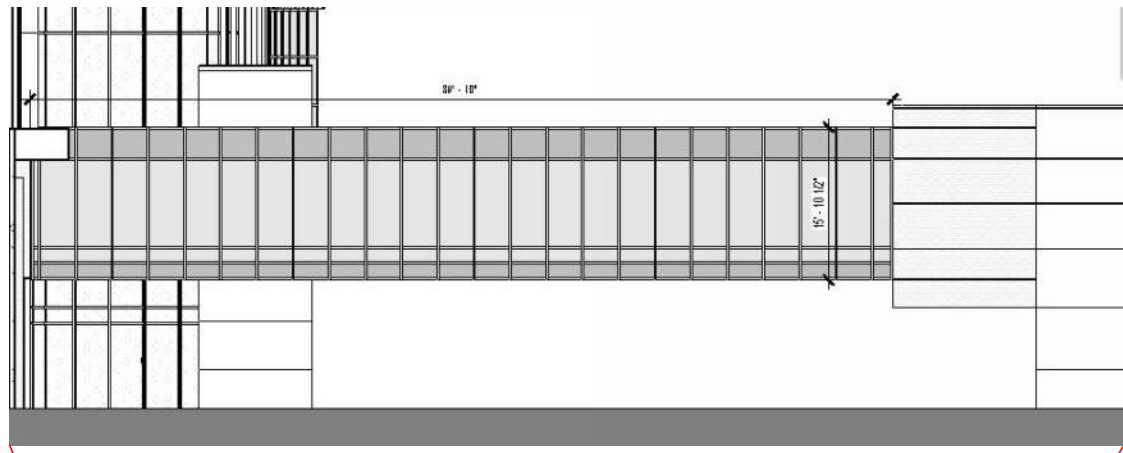
Bridge Connection (Future)
Wyandotte Street



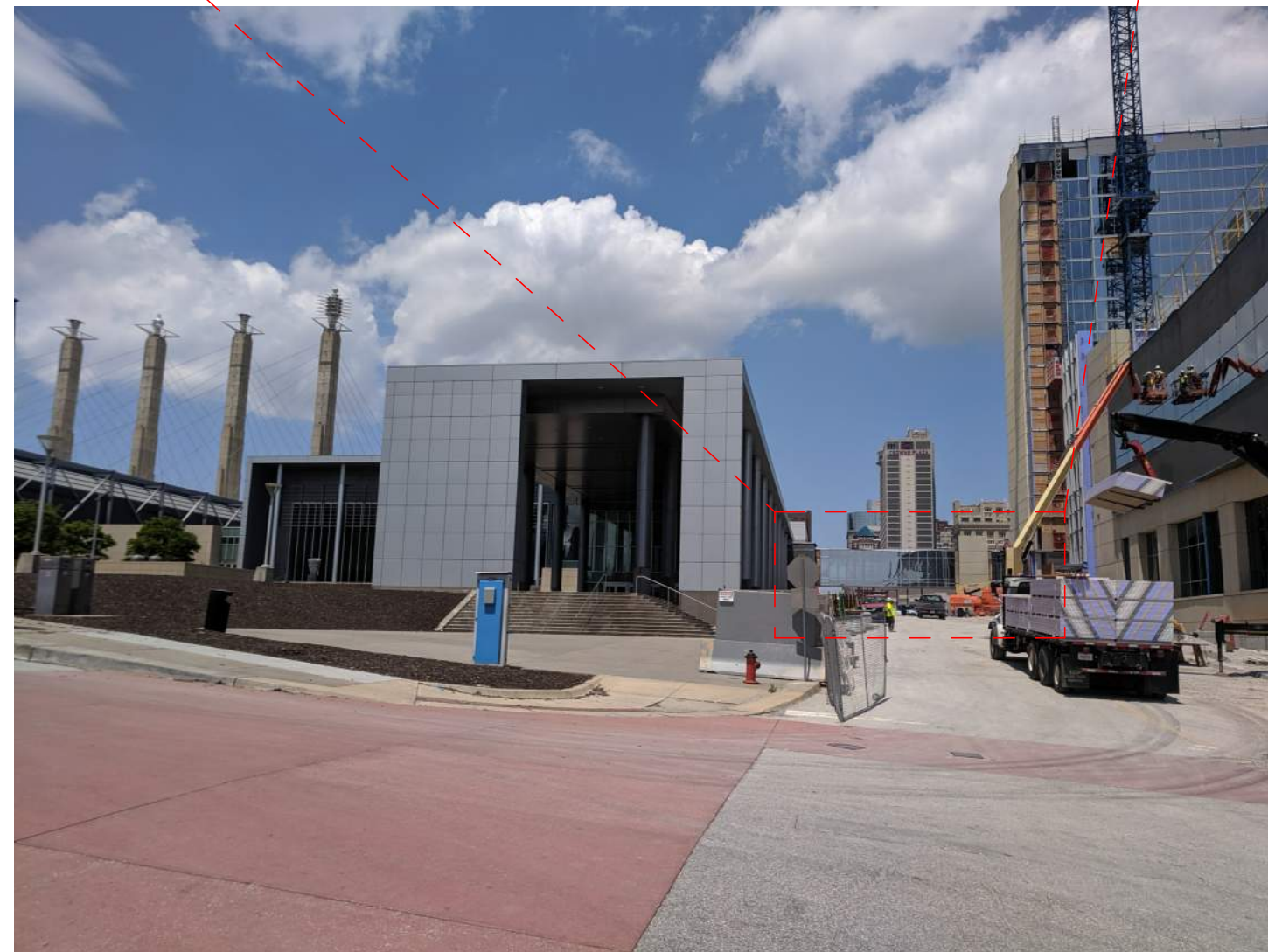
SECTION VIEW



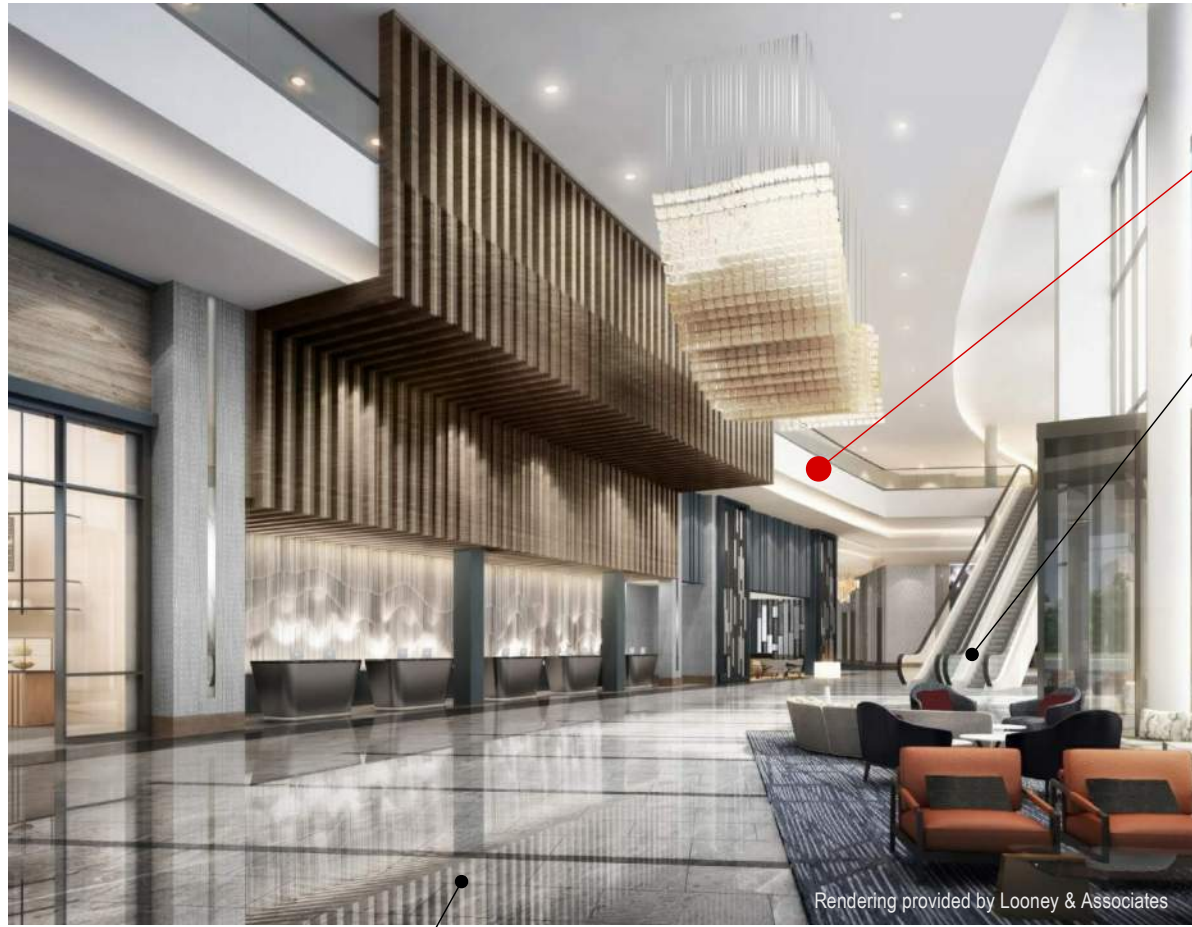
FLOOR PLAN VIEW



WYANDOTTE STREET VIEW LOOKING SOUTH



WYANDOTTE STREET VIEW LOOKING NORTH

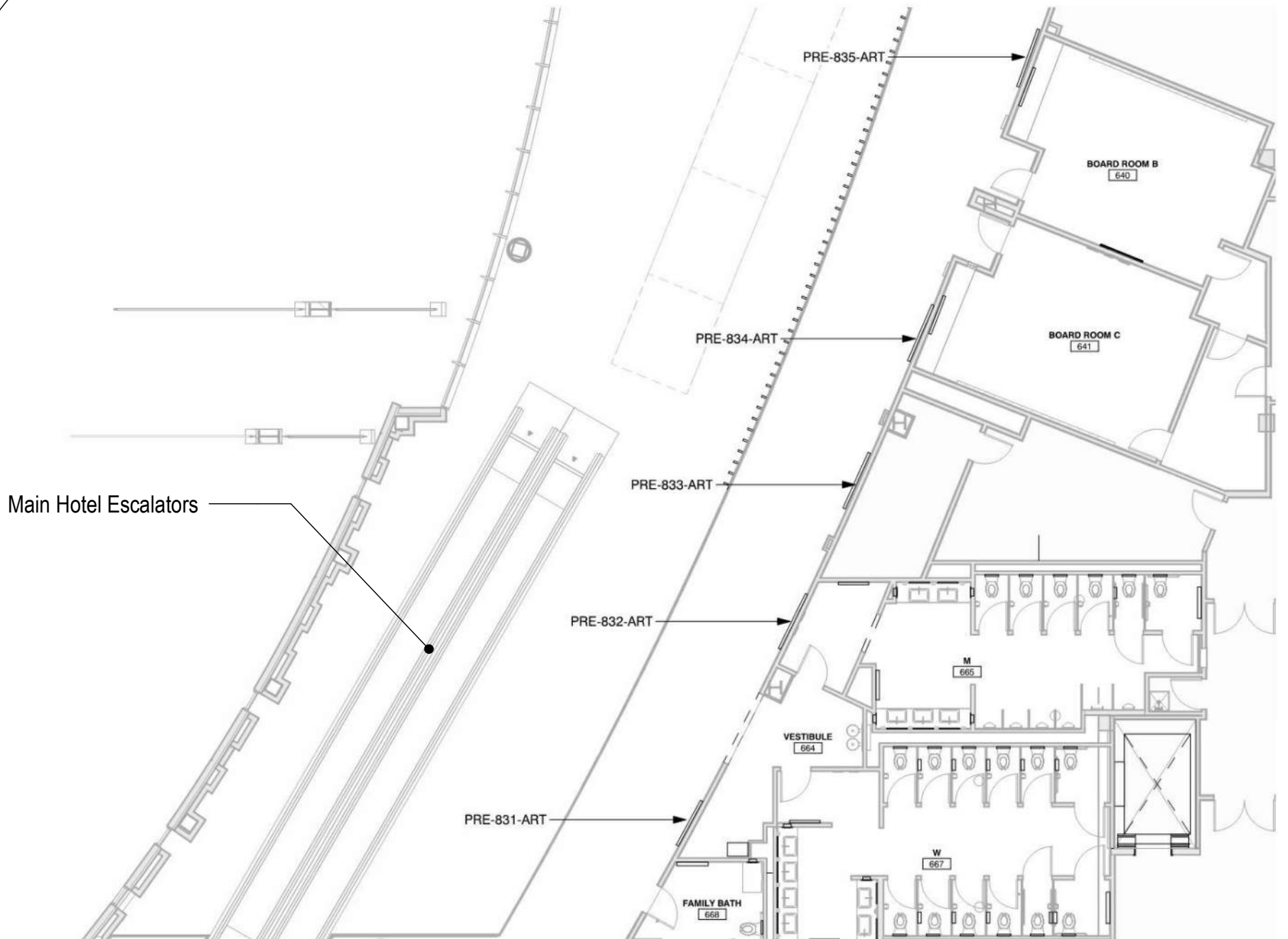


Loews Hotel Lobby Level

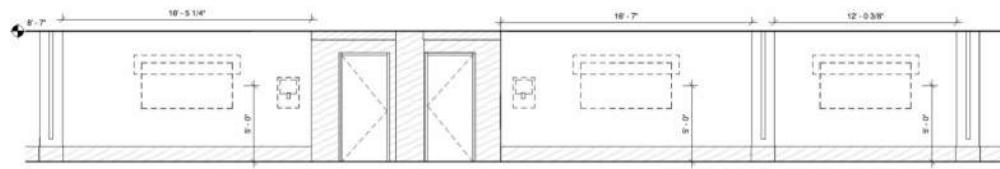
Rendering provided by Looney & Associates

LOCATION 4
LOEWS HOTEL MEZZANINE LEVEL

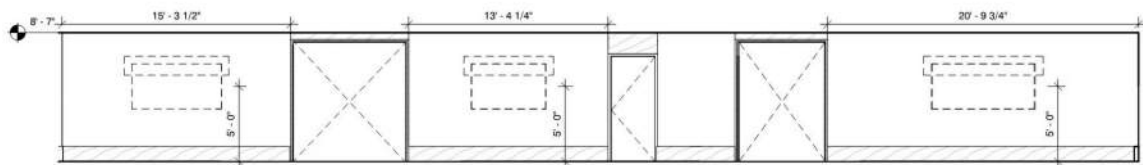
Main Hotel Escalators



Main Hotel Escalators



LOCATION 4A - SERIES A



LOCATION 4B - SERIES B