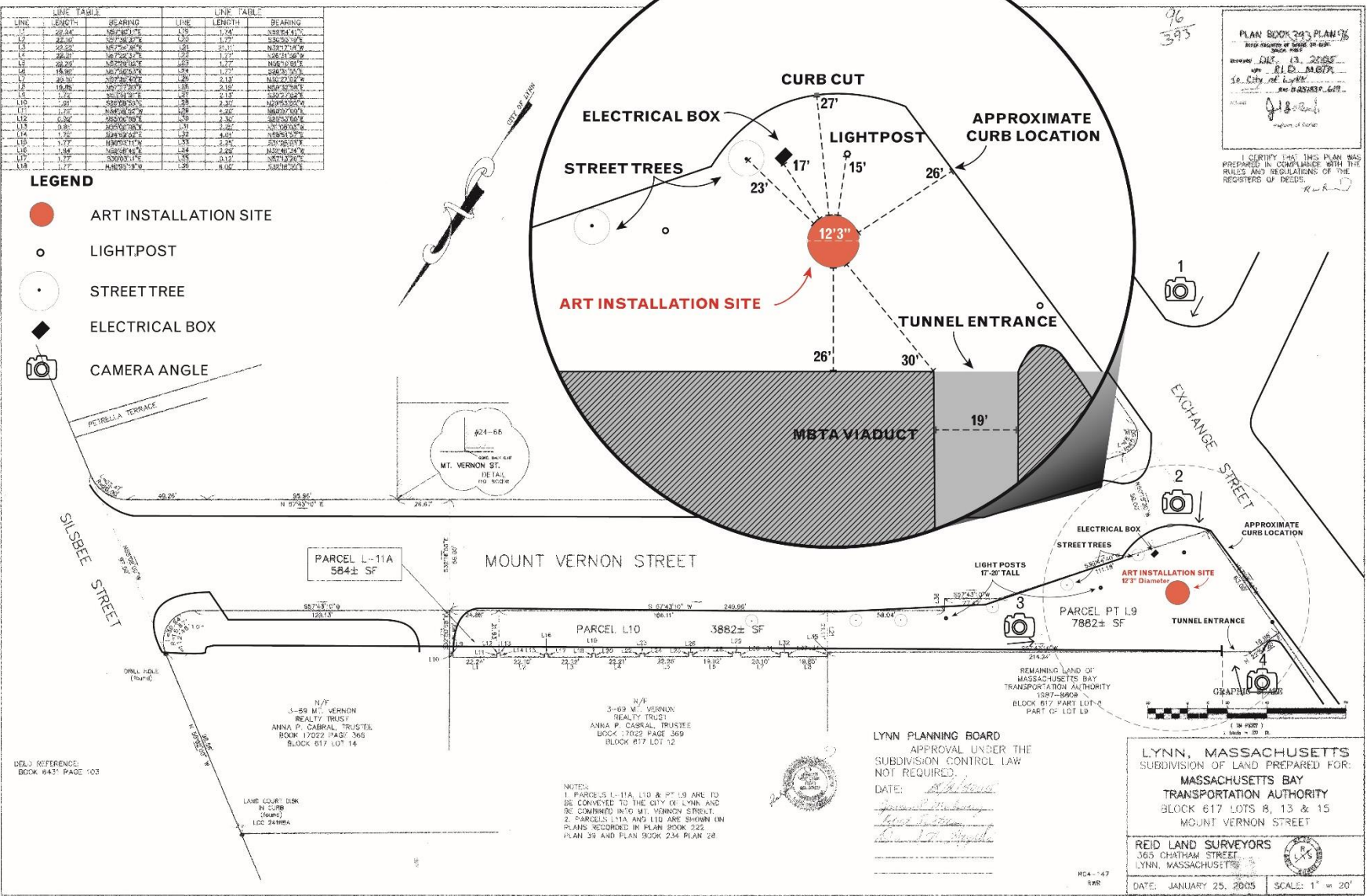


2019 CALL FOR ARTISTS
APPENDIX D: SITE PLAN CONSIDERATIONS

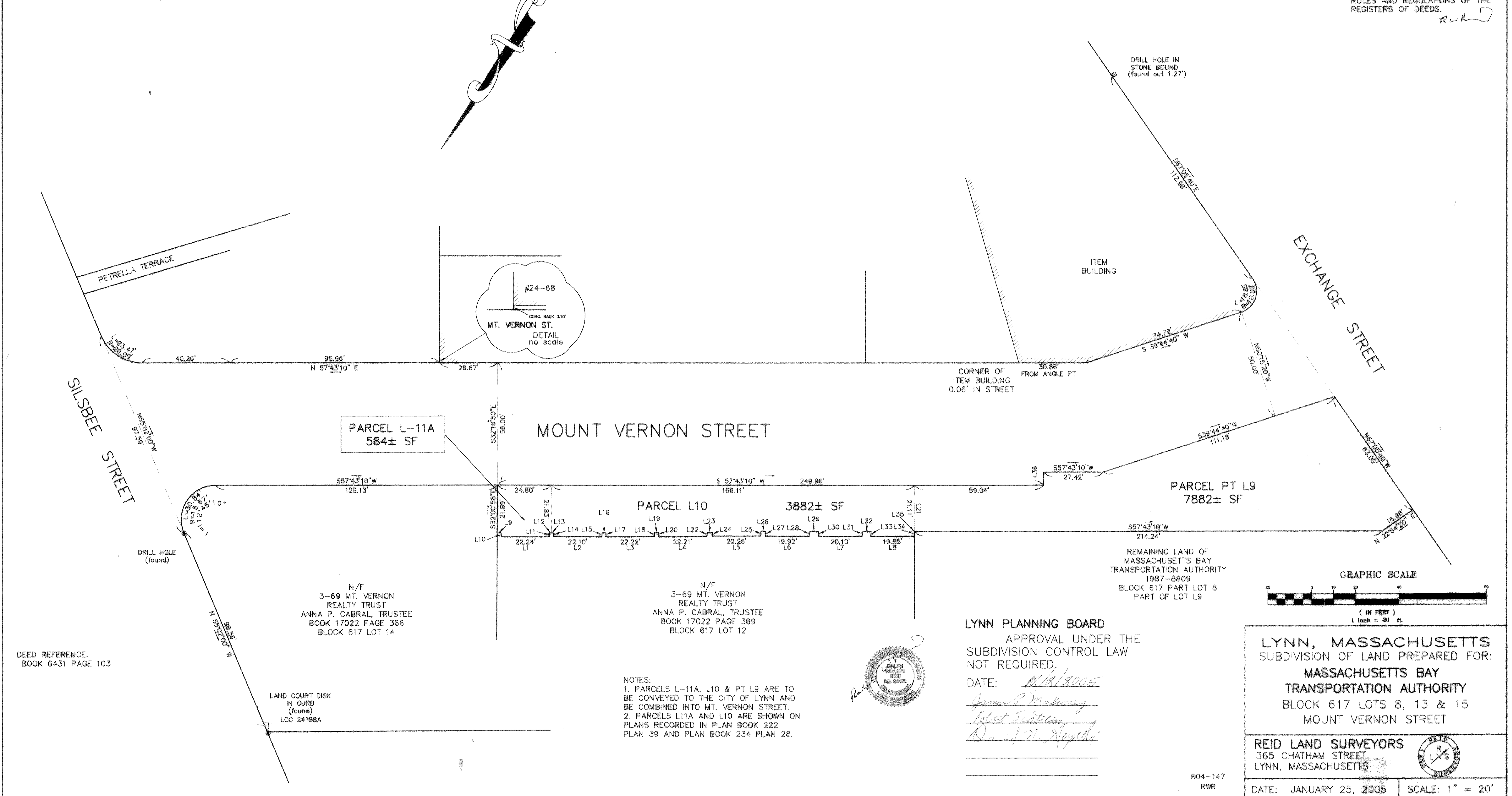


LINE TABLE			LINE TABLE		
LINE	LENGTH	BEARING	LINE	LENGTH	BEARING
L1	22.24'	N57°40'11"E	L19	1.74'	N59°04'41"E
L2	22.10'	N57°39'37"E	L20	1.77'	S30°55'19"E
L3	22.22'	N57°24'36"E	L21	21.11'	N32°17'16"W
L4	22.21'	N57°22'37"E	L22	1.77'	N26°31'55"W
L5	22.26'	N57°29'02"E	L23	1.77'	N55°10'51"E
L6	19.92'	N57°50'53"E	L24	1.77'	S26°31'55"E
L7	20.10'	N57°20'40"E	L25	2.13'	N30°27'02"W
L8	19.85'	N57°27'00"E	L26	2.19'	N59°32'58"E
L9	1.72'	N53°51'01"E	L27	2.13'	S30°27'02"E
L10	1.91'	S36°08'59"E	L28	2.30'	N29°53'00"W
L11	1.79'	N34°59'52"W	L29	4.20'	N60°07'00"E
L12	0.92'	N55°00'08"E	L30	2.30'	S29°53'00"E
L13	0.81'	N55°00'08"E	L31	2.25'	N31°08'03"W
L14	1.79'	S34°59'52"E	L32	4.01'	N58°51'57"E
L15	1.77'	N30°03'11"W	L33	2.25'	S31°08'03"E
L16	1.84'	N59°56'49"E	L34	2.25'	N32°46'34"W
L17	1.77'	S30°03'11"E	L35	0.12'	N57°13'26"E
L18	1.77'	N30°55'19"W	L36	6.00'	S32°16'50"E

96
393

PLAN BOOK 393 PLAN 96
 ESSEX COUNTY OF DEEDS SO DIST.
 SALEM MASS.
 Received DEC 13, 2005
 with RLD, MBTA
 to City of Lynn
 Rec D 25183P 619
 Attest: *J. B. O'Connell*
 Registrar of Deeds

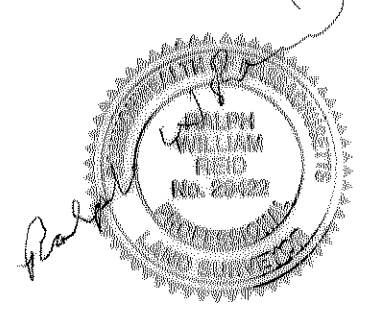
I CERTIFY THAT THIS PLAN WAS PREPARED IN COMPLIANCE WITH THE RULES AND REGULATIONS OF THE REGISTERS OF DEEDS.
RWR



DEED REFERENCE:
BOOK 6431 PAGE 103

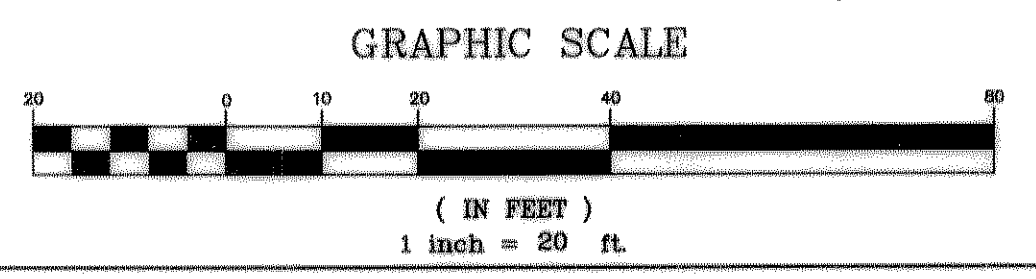
LAND COURT DISK
IN CURB
(found)
LCC 24188A

NOTES:
 1. PARCELS L-11A, L10 & PT L9 ARE TO BE CONVEYED TO THE CITY OF LYNN AND BE COMBINED INTO MT. VERNON STREET.
 2. PARCELS L11A AND L10 ARE SHOWN ON PLANS RECORDED IN PLAN BOOK 222 PLAN 39 AND PLAN BOOK 234 PLAN 28.



LYNN PLANNING BOARD
 APPROVAL UNDER THE
 SUBDIVISION CONTROL LAW
 NOT REQUIRED.

DATE: *11/2/2005*
James P. Mahoney
Robert J. Sullivan
David M. Angello



LYNN, MASSACHUSETTS
 SUBDIVISION OF LAND PREPARED FOR:
 MASSACHUSETTS BAY
 TRANSPORTATION AUTHORITY
 BLOCK 617 LOTS 8, 13 & 15
 MOUNT VERNON STREET

REID LAND SURVEYORS
 365 CHATHAM STREET
 LYNN, MASSACHUSETTS

R04-147
RWR

DATE: JANUARY 25, 2005 SCALE: 1" = 20'