

**UF ASB 619 IHLC - Institute of Hispanic Latino Cultures “La Casita”**  
**Art Budget: \$20,000**

**Site for Art:** The primary focus for a mural is the courtyard, with walls on the north, east and south sides. These walls are heavily shadowed on a sunny day by abstracted flag designs cast from the ceiling.

The committee is looking for art that supports the identities of the IHLC which includes 27 countries and several languages.

The walls are made of a fiber panel known as Nichiha (<https://www.nichiha.com/product/architecturalblock>) with a decorative concrete masonry unit along the base of the walls.

**IHLC COURTYARD:**

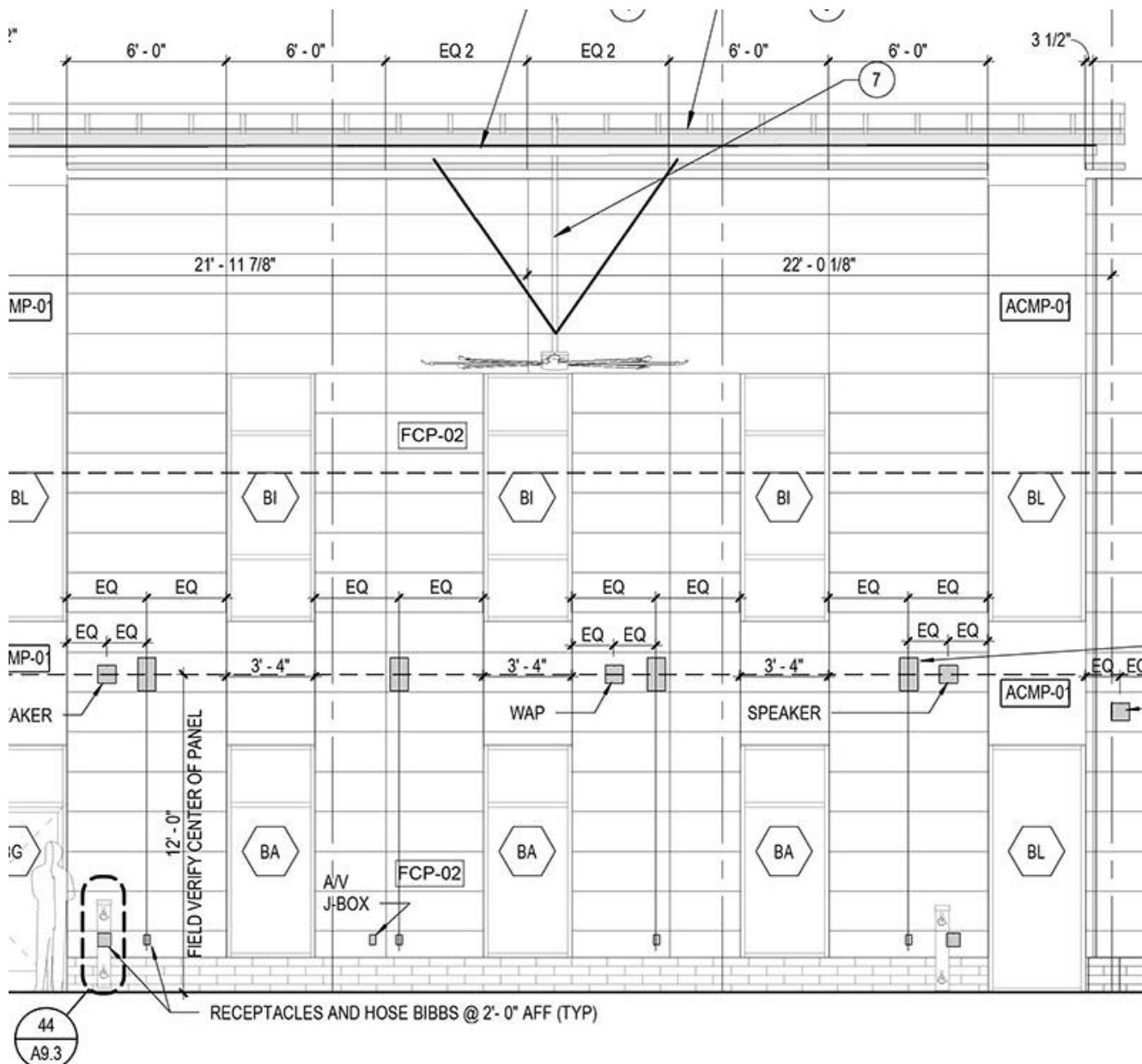


Panoramic view showing mostly east and south walls

East Courtyard Wall:



East Wall Rendering– Exterior Courtyard Wall is patterned with shadows

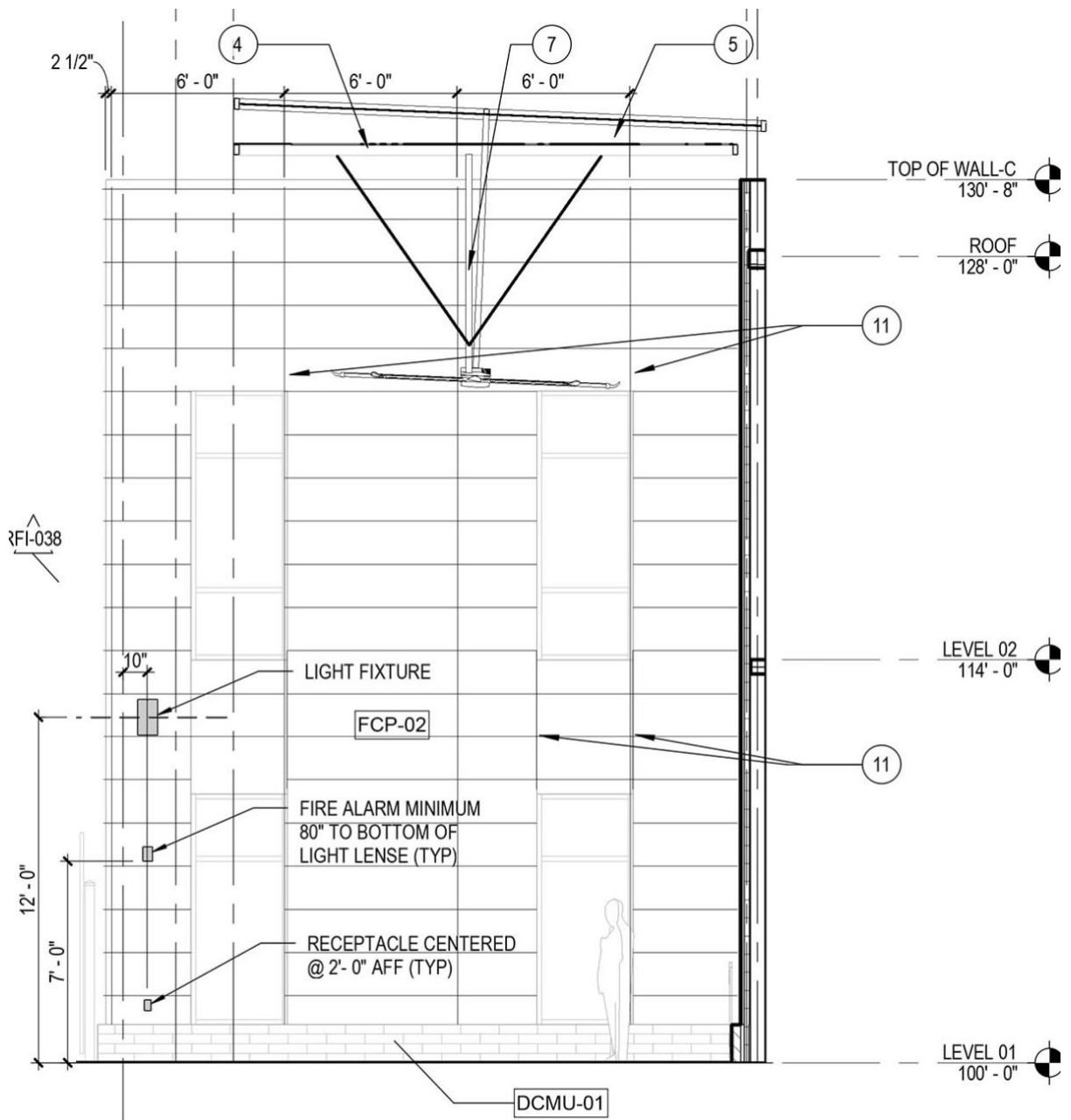


Elevation of East Courtyard wall

## North Courtyard Wall:



Photograph of North Courtyard Wall with cast shadows.



7 COURTYARD - NORTH ELEVATION - IHLC

A5.2

SCALE: 3/16" = 1'-0"

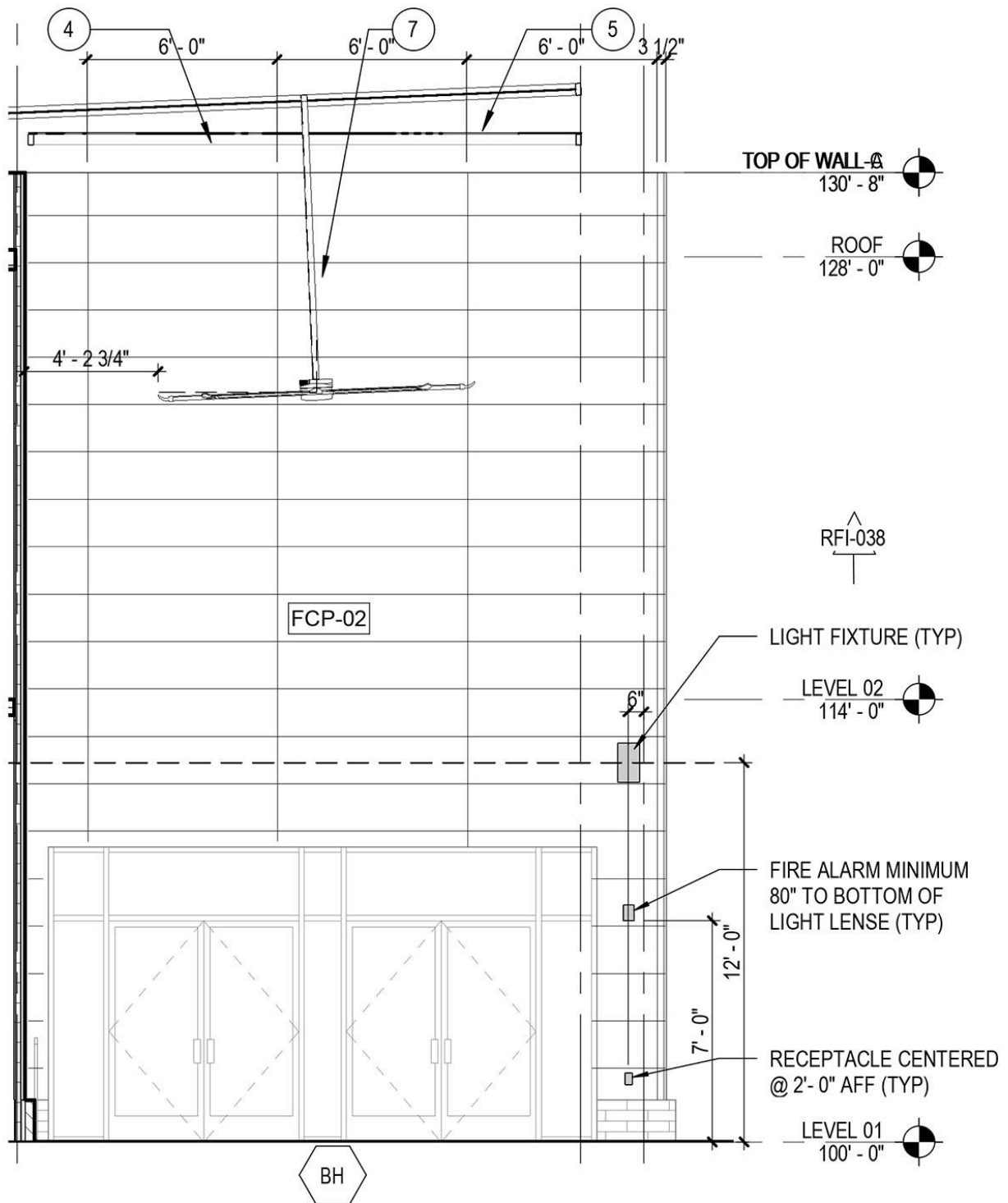
Elevation of North Courtyard Wall



## South Courtyard Wall:



The south courtyard wall is the largest uninterrupted space and will receive the lease amount of shadows on a sunny day.



# 6 COURTHYARD - SOUTH ELEVATION - IHLC

A5.2 SCALE: 3/16" = 1'-0"

Elevation of South Courtyard Wall

## Alternate Views of IHLC – Provided for Context only



View of South facing Main Entrance



View of south west corner towards courtyard