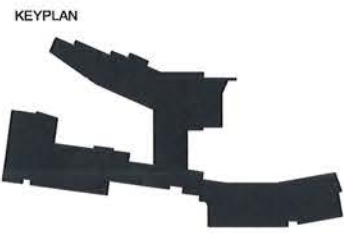


- LEGEND:**
- 4" CONCRETE PAVING 6000 PSI
 - 8" CONCRETE EDGE RESTRAINT
 - PERMEABLE CONCRETE UNIT PAVERS
 - BRICK PAVERS
 - WASHED GRAVEL 4" THICK
 - CONCRETE BENCH
 - TRUNCATED DOME PAVEMENT
 - DIAPHRAGM
 - 4" STEEL EDGING
 - SIDEWALK CONTROL JOINT
 - DECORATIVE METAL FENCE
 - PROPERTY LINE
 - EXISTING CONTOUR
 - PROPOSED SPOT ELEVATION
 - PROPOSED CONTOUR
 - FFE FINISH FLOOR ELEVATION
 - CB CATCH BASIN
 - INV INVERT ELEVATION
 - TS TOP OF STEP
 - BS BOTTOM OF STEP
 - TW TOP OF WALL
 - BW BOTTOM OF WALL



REVISIONS

No.	Description	Date

PROJECT NO: 19-627-13-01, Part 01, F.19001123
 Site Code 7-35-007
 PROJECT DATE: 17 Jan 2019 | April 12, 2019



New Dormitory - Louisiana School for Math, Science, and the Arts
 Natchitoches, Louisiana

- GRADING NOTES**
1. CONTRACTOR TO GRADE FOR POSITIVE DRAINAGE CONFORMING TO THE DRAINAGE PATTERNS SHOWN ON PLANS.
 2. ELEVATION DATA IS BASED ON THE TOPOGRAPHICAL SURVEY INCLUDED IN THE DRAWINGS.
 3. PRIOR TO PLACING FILL CONTRACTOR TO CLEAR AND GRUB ANY ORGANIC MATERIAL FROM SOIL STRIPPING TO A DEPTH OF 4" IF SOIL DEPTH.
 4. FILL MATERIAL SHALL BE LEAN CLAYS PLACED IN LIFTS NOT EXCEEDING 12" AND COMPACTED TO 90%.
 5. REFER TO CIVIL DRAINAGE PLAN FOR SUBSURFACE DRAINAGE AND INLETS.

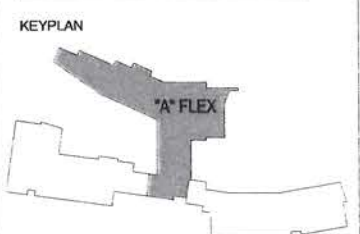


Scale: 1" = 10'
 0 5 10 20 Feet

Thursday, December 13, 2018 3:57:52 PM

Note: See EXTERIOR ELEVATIONS and GLAZED OPENING TYPES for additional glazing information.

WINDOW MARKS ADDED



REVISIONS

No.	Description	Date
3	Addendum 4	2019.02.15
4	Addendum 5	2019.02.20

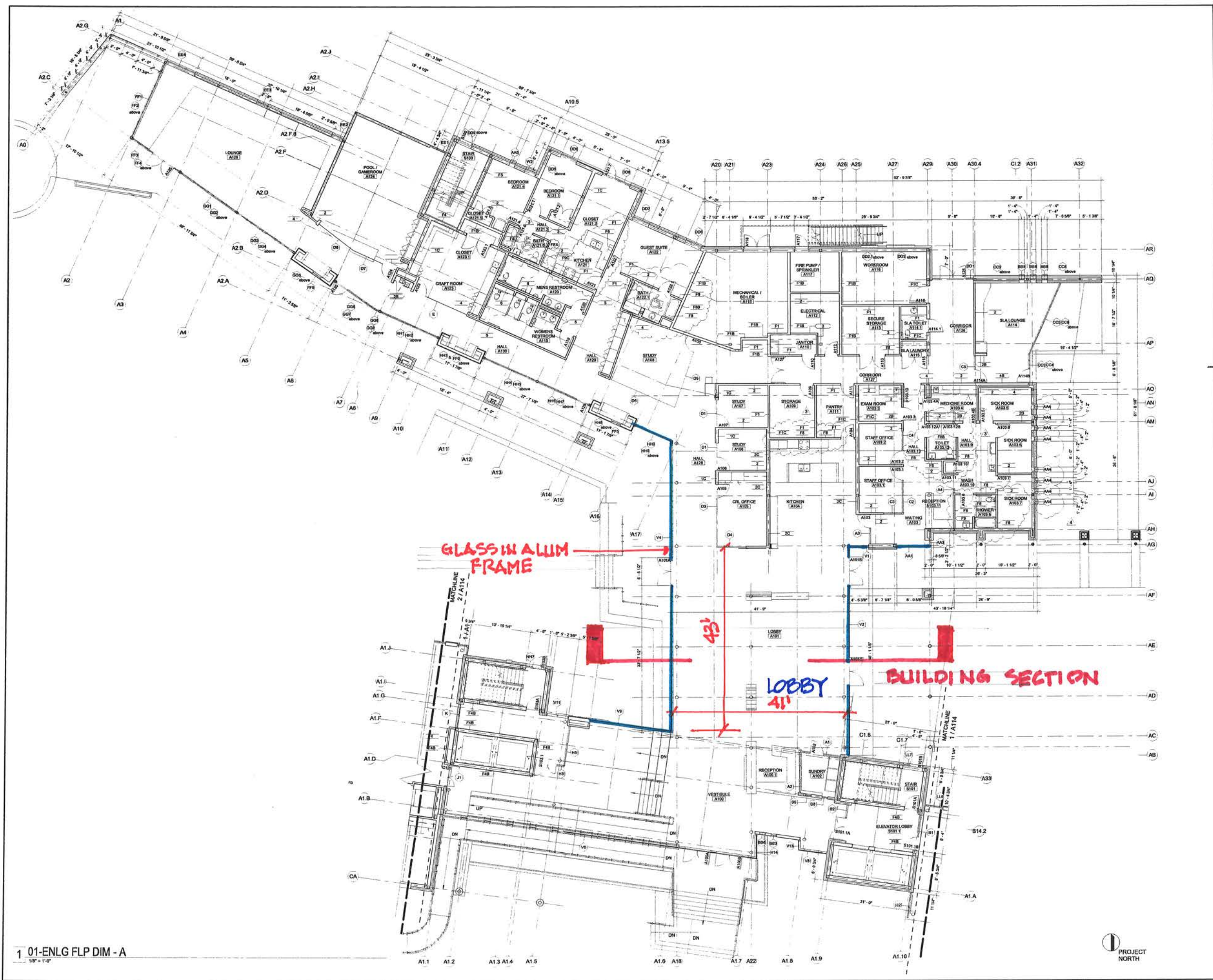
PROJECT NO:
 19-657-13-01, Part 01, F.19001123
 Site Code 7-35-007
 PROJECT DATE:
 17 Jan 2019 | April 12, 2019



New Dormitory - Louisiana School for Math, Science, and the Arts

Natchitoches, Louisiana

FIRST FLOOR DIMENSIONED PLAN "A"
 DWG NO. **A112**



1 01-ENLG FLP DIM - A
 1/8" = 1'-0"



