

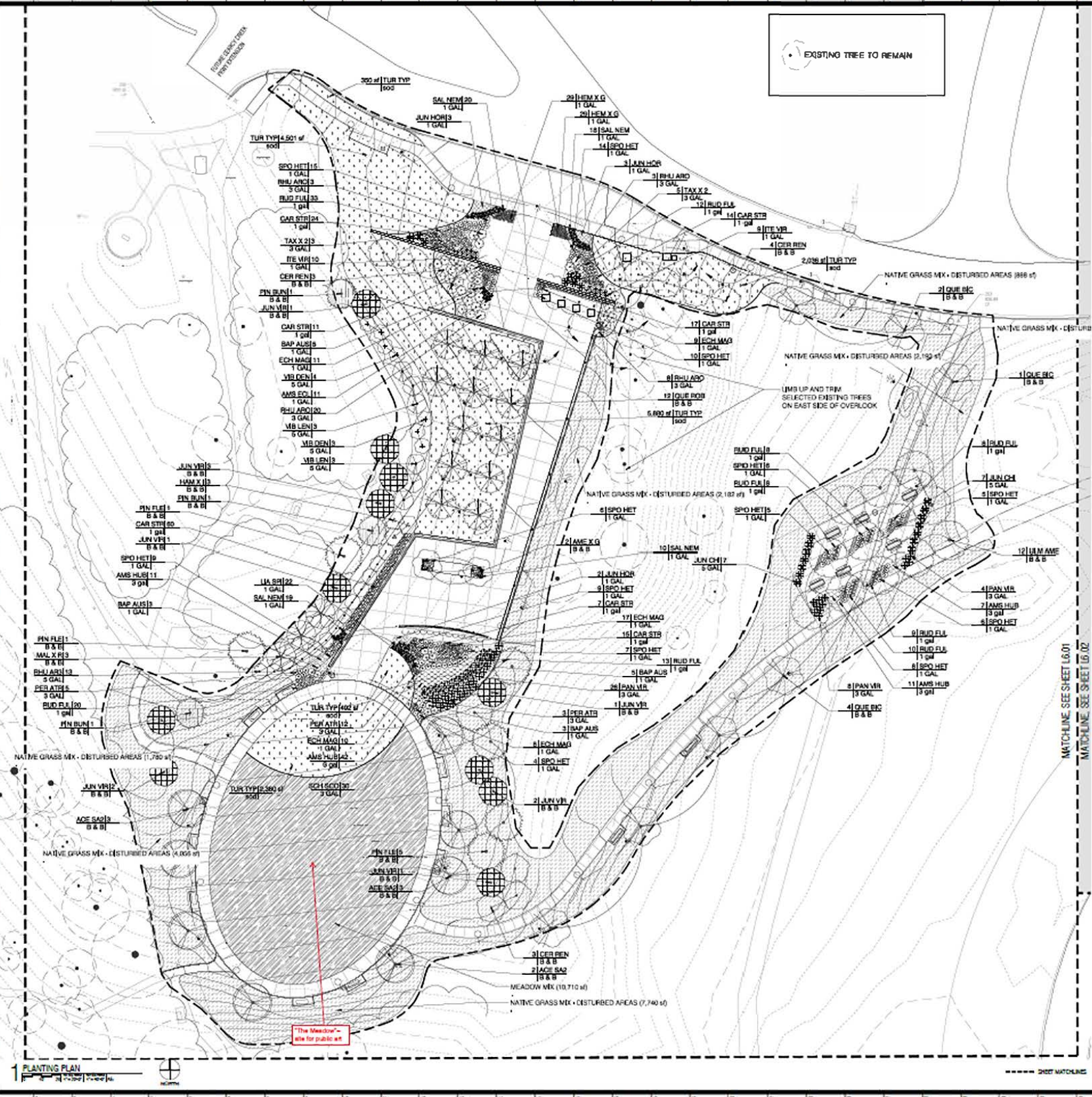


HONORING THE PAST, CELEBRATING THE PRESENT

The Regional Law Enforcement Memorial Garden honors and celebrates the men and women who have laid down their lives in the line of duty. Located at the Regional Police Academy, the garden is envisioned as a sequence of ever-changing spaces that tell the stories of those who made the ultimate sacrifice, as well as to honor past and current officers and their families, who make daily sacrifices to serve and protect.

The individual spaces in the garden create experiences that change through the seasons and over time, ranging from quiet contemplation and intimate scales to grand and celebratory spaces. These spaces are woven into the natural settings of the site: from the high bluff overlooking the Academy and the forests of the Northland, to the forest grove, through the native prairie. The project is designed to be accessible and open to all.

EXISTING TREE TO REMAIN



PLANT SCHEDULE

TREES	CODE	NOTATION / COMMON NAME
	ACE 6A2	ACER BACCHARIFOLIUM 'JONH' P & B
	AME X 0	AULACOSTERIS GRANDIFLORA 'AUTUMN BRILLIANCE' AUTUMN BRILLIANCE NURSERY
	CER PEN	CERCIS BENTONICA 'OKLAHOMA' OKLAHOMA RED BUD
	HWM X 1	HAMMILLIS 'BENTONIC' 'GENA' GENA WITCH HAZEL
	JUN 4R	JUNIPERUS HORIZONTALIS 'HUGHES' HUGHES JUNIPER
	MAL X R	MALUS 'ROYAL REDBROS' ROYAL REDBROS CRABAPPLE
	PN 6UN	PNUS BURGIANA LACINIAE PINE
	PN 6LC	PNUS FLORENS LINDLEY PINE
	QU 7B	QUERCUS BICOLOR SWAMP WHITE OAK
	QU 7OB	QUERCUS FERRUGINEA 'CHIMBORAZO' TM CHIMBORAZO WHITE OAK
	ULM AME	ULMO AMERICANA 'PRACITON' AMERICAN LINDEN
	COL 60	COLLEA 'LITTLE LINDEN' LITTLE LINDEN
	BAP ALB	BALUS ALBESCENS BALUS ALBESCENS
	ITV 6B	ITEA VIRGINICA 'LITTLE LINDEN' TM LITTLE LINDEN
	JUN 04	JUNIPERUS CHINENSIS 'SEA GREEN' SEA GREEN JUNIPER
	PN 4 1/2	PNUS ARIZONICA 'DRAGON' DRAGON PINE
	TAX X 2	TAXUS NEXIA 'DWARF' DWARF YEW
	ULM AME	ULMO AMERICANA 'PRACITON' AMERICAN LINDEN
	COX 60	COXIA 'LITTLE LINDEN' LITTLE LINDEN
	HWM X 2	HAMMILLIS 'GENA' GENA WITCH HAZEL
	LA 91	LACTUCA SEROTINERA LACTUCA SEROTINERA
	FOR 4TR	FORSYTHIA ATREBICATA 'LITTLE JOAN BAPT' BLUE JOAN BAPT FORSYTHIA
	RUD 6L	RUDEBEDIA PALOIDEA 'GOLDSTREK' GOLDSTREK
	SA 404	SALIX NICHOLSONIA 'VOLUT' VOLT BIRCH
	COX 60	COXIA 'LITTLE LINDEN' LITTLE LINDEN
	CAR 6TR	CAREX ERECTA 'L. SERRA' L. SERRA
	PN 4R	PNUS BURGIANA 'LACINIAE' LACINIAE PINE
	BOH 600	BOENNINGHAUSIA BOENNINGHAUSII 'THE BLUE' THE BLUE BOENNINGHAUSIA
	SPO 6HT	SPOERDIA HETEROPHYLLA 'PAIRE' PAIRE
	COX 60	COXIA 'LITTLE LINDEN' LITTLE LINDEN
	PN 4 1/2	PNUS ARIZONICA 'DRAGON' DRAGON PINE
	1 DCA	1 DCA
	1 B 1/2	1 B 1/2
	COX 60	COXIA 'LITTLE LINDEN' LITTLE LINDEN
	AM 7	AMORPHOSA 'ARIZONA' ARIZONA
	JUN 4R	JUNIPERUS HORIZONTALIS 'HUGHES' HUGHES JUNIPER
	MEADOW MIX	MEADOW MIX
	TUR TYP	TURF TYPE TALL FESCUE 'YARD MAN' TURF TALL FESCUE



bnim
 bennett | nelson | hennrich | mowbray | architects
 200 West 10th Street, Suite 100
 Minneapolis, MN 55401
 Tel: 612.338.1111
 Fax: 612.338.1112
 www.bnim.com

Landscaping Architect
 Civil Engineering / Survey
 Lighting Design / Electrical
 Structural Engineer
 Designer
 Structural
 Irrigation Designer

Regional Law
 Enforcement - Memorial
 Garden
 Searcy Creek Park
 Searcy, AR 72156
 Project No. 14026.00

Permit Documents

Issued: 14 OCTOBER 2015

Date	Description	Date Issued
10/14/15	PERMIT TO CONSTRUCT	10/14/15



PLANTING PLAN
L6.01