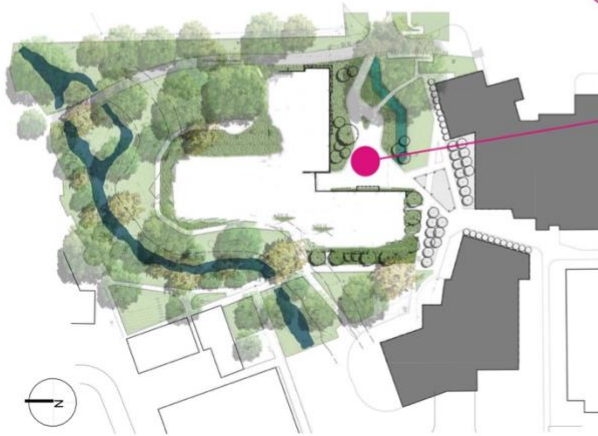


UF ASB 394 PKY – Site 1 morning/afternoon student gathering space at Main Entrance



Site Development

The location of the new building on the 31-acre site presents a unique context for learning with the Tumbler Creek, a protected wetland that meanders east to west through the campus. The site is also surrounded by mature oak trees, including a state champion bluff oak which serves as a visual focal point for two of the classroom wings. To take full advantage of this exceptional site, the design incorporates an educational pathway with environmental classrooms to provide a direct connection to the outdoors. Additionally, a wetland/stormwater demonstration area has been incorporated into the front entry courtyard to reinforce the understanding of the environmental impact of the building on its site.



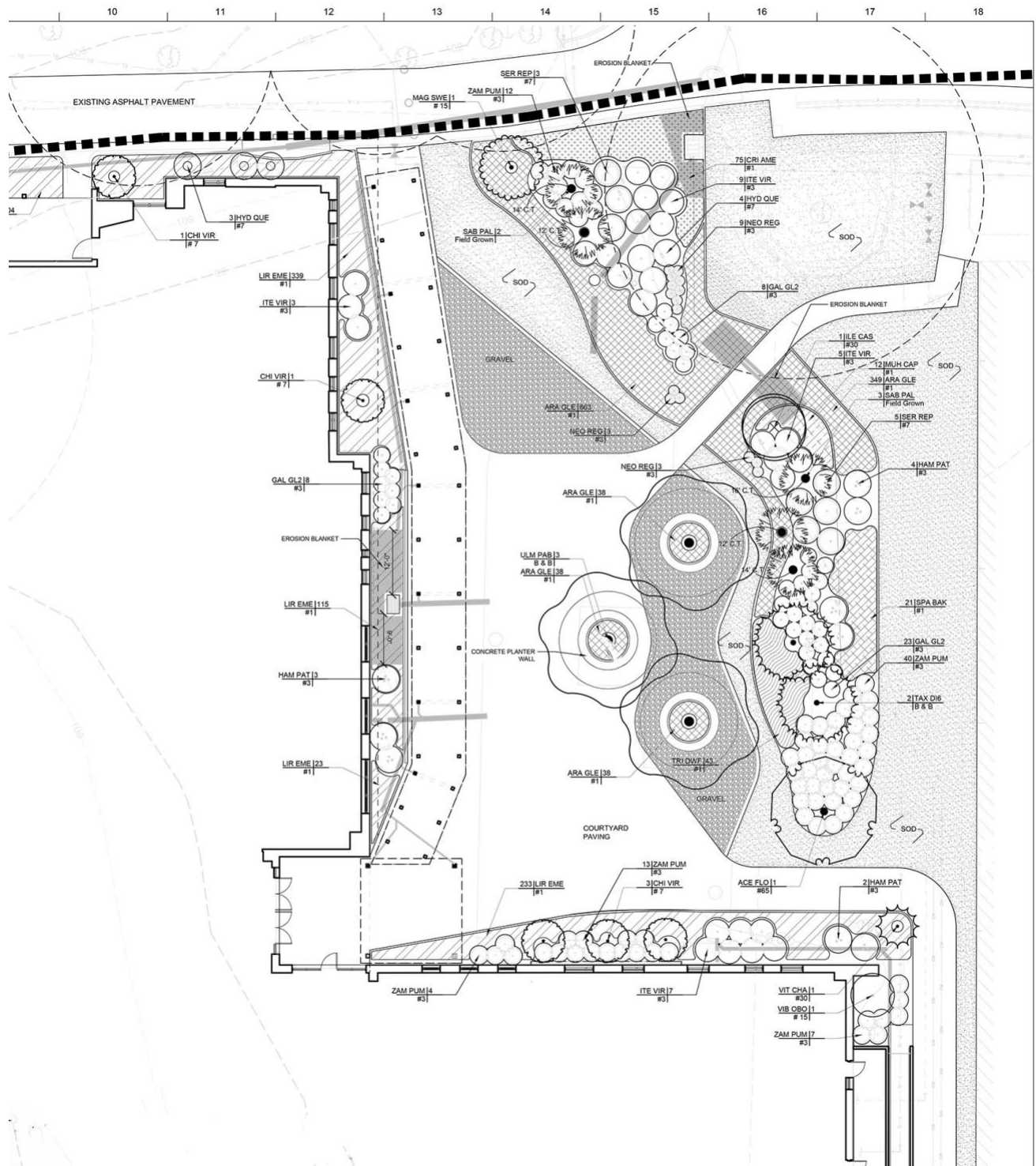
ZONE/LOCATION FOR ART

- main entrance to school
- exterior and subject to the elements
- unobstructed vertically
- landscaping scheduled within the area (see landscape plans)

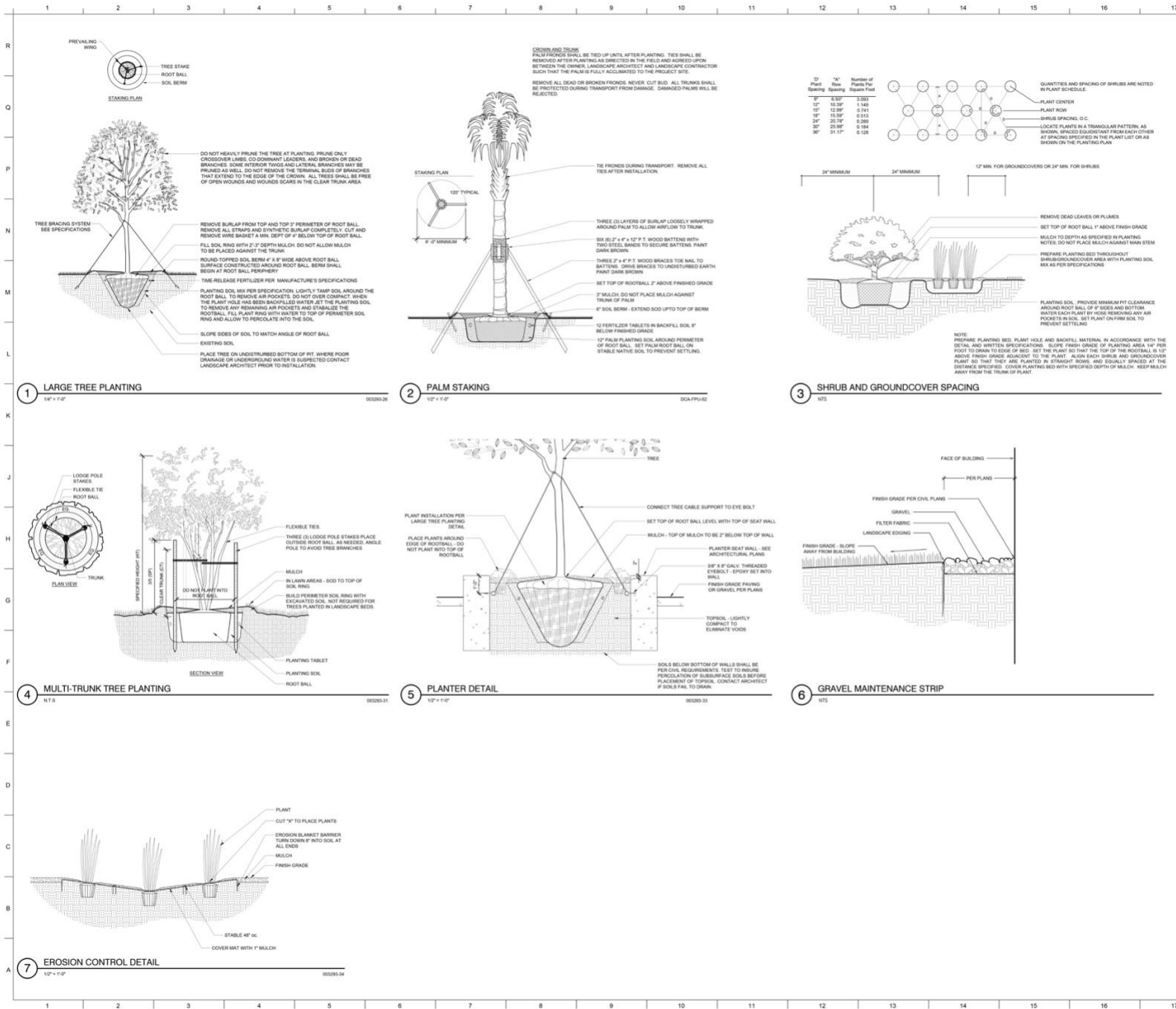
SCHENKELSHULTZ
ARCHITECTURE



Site 1 – Alternate view



Site 1 – Landscape Plan



Site 1 – Plant Listing