



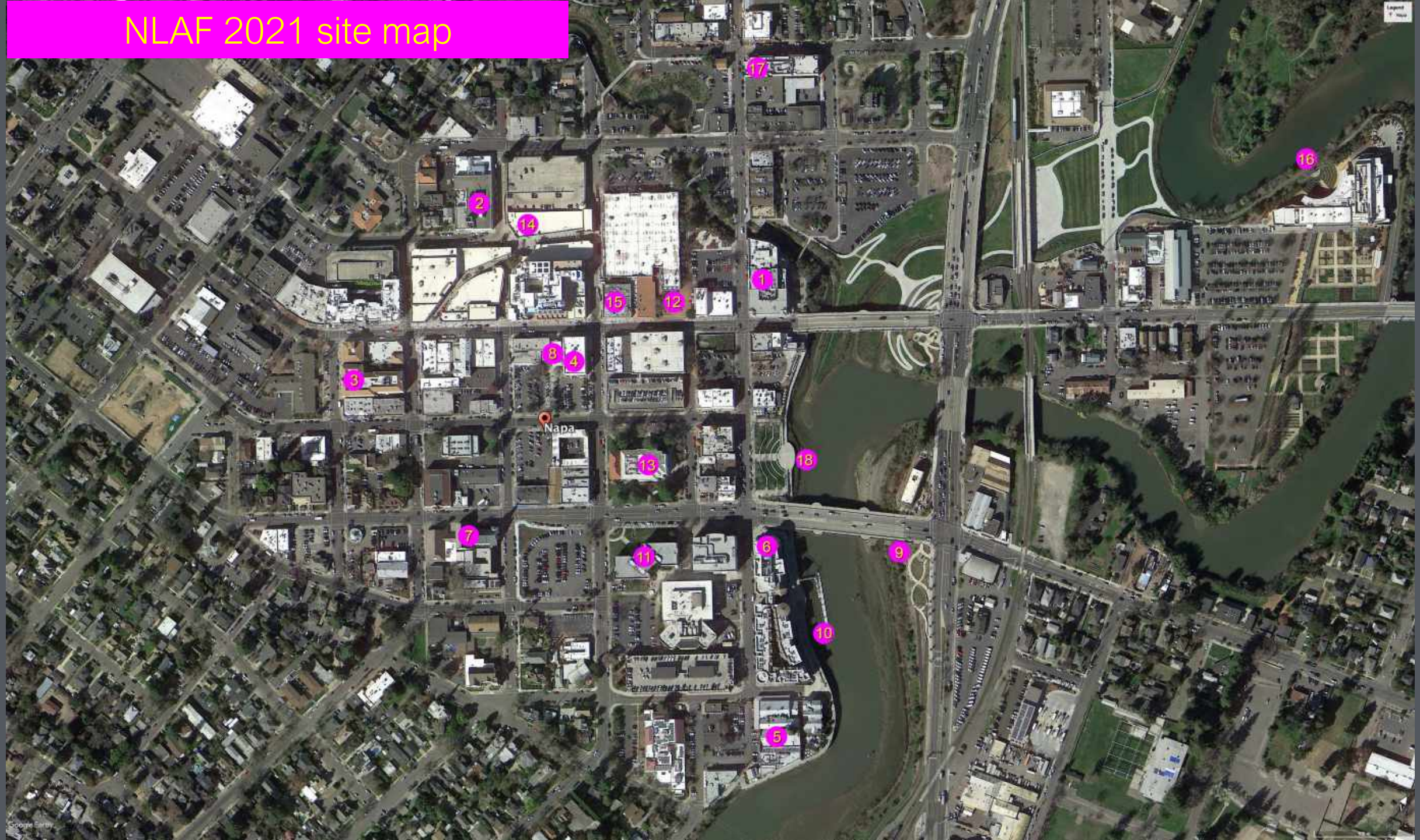
## 2021 Potential Sites Overview

# Napa Sites Notes

- Napa Lighted Art Festival have budgeted for all technical equipment to be provided at each site.
- If you wish to provide elements of your own technical equipment as part of the installation, this is possible but only in conversation with our technical team.
- The notes next to each photograph reflect the equipment that we have earmarked for this site. We are happy for the artists to suggest other technologies and to propose that in their submission.
- We are open to new technologies or uses of technologies that are new or unusual.



# NLAF 2021 site map





# Blue Note

## **Site 1** (65' x 30')

Blue Note Napa is a live music jazz club venue occupying the first floor of the historic Napa Valley Opera House

### **Equipment budgeted for:**

Video projector and playback.  
Stereo audio system.



# AT&T Building

**Site 2**  
**(61'x31')**

**Equipment budgeted for:**

Video projector and playback.  
Stereo audio system.



# Napa Square

**Site 3**  
**(98'x36')**

Equipment budgeted for:  
2 x video projectors and media server.  
Stereo audio system.



# Native Sons of the Golden West

## **Site 4** (69'x34')

The Native Sons of the Golden West is a fraternal service organization founded in 1875, limited to native born Californians and dedicated to historic preservation, documentation of historic structures and places in the state, the placement of historic plaques and other charitable functions within California.

### **Equipment budgeted for:**

Video projector and playback.  
Stereo audio system.



# Napa Historic Mill Silo

## **Site 5** **(21' x 44')**

The Hatt Building and the Napa Mill Complex, constructed between 1884 and 1887, are Napa's oldest large brick industrial buildings.

### **Equipment budgeted for:**

Video projector and playback.  
Stereo audio system.





# Riverfront Building

## Site 6

(85'x 48')

### Equipment budgeted for:

Video projector and playback.

Stereo audio system.



# Presbyterian Church

## **Site 7** **(67' x 105')**

The landmark First Presbyterian Church sits at the corner of Third and Randolph Streets in Downtown Napa. Since its construction in 1874 it has stood as a truly unique example of Victorian Gothic Architecture, notable for its ornate spire and striking stained glass windows. Built by architects R.H. Daley and Theodore Eisen, the building achieved landmark status in 1975.

## **Equipment budgeted for:**

Video projector and playback.  
Stereo audio system.



# Goodman Library

## **Site 8** **(36'x46')**

The Goodman Library is one of the oldest continually occupied library buildings in California. Built between 1901 and 1902 through a donation of land and money by local bank magnate George E. Goodman, the library offered a permanent solution to Napa's struggle to find a home for its free library.

## **Equipment budgeted for:**

Video projector and playback.  
Stereo audio system.





# Riverfront Green

## Site 9

The Riverfront Green is across the river from downtown Napa and links Napa to the Oxbow District. We require a large scale light installation here to create a landmark 'gateway' to the festival area.

### **Equipment budgeted for:**

We would like to commission a light sculpture for this space.



# Riverfront Promenade

## Site 10

This is an extended walkway along the river. It is around 250 yards long and has several small areas to install artworks.

### **Equipment budgeted for:**

We would like to commission a light sculpture for this space that will take advantage of its extended length and create a 'promenade' opportunity.



# Napa County Office Lawn

## Site 11

We would like to commission a light sculpture for this space.





# Dwight Murray Plaza

## Site 12

We would like to commission a light sculpture for this space.



# Napa Court House

## **Site 13 (62' x 45')**

The High Victorian Italianate courthouse was built in 1878 to replace the original 1856 courthouse. The courthouse continues to operate as part of the Napa County. The building suffered major damage under the 2014 earthquake and reopened in 2018.

**Equipment budgeted for:**  
Video projector and playback.  
Stereo audio system.



# First Street Napa

## Site 14

Newly renovated outdoor shopping and restaurant corridor.

### **Equipment budgeted for:**

We would like to commission a light sculpture for this space.





# Gordon Building

## Site 15

Newly renovated heritage building.

### **Equipment budgeted for:**

Video projector and playback.  
Stereo audio system.



# CIA Amphitheater

## Site 16

Outdoor amphitheater at the Culinary Institute of America

### **Equipment budgeted for:**

We would like to commission a large-scale light sculpture for this space.



# Main & Clinton

## Site 17

Office Building

**Equipment budgeted for:**  
Video projector and playback.  
Stereo audio system.





# Veterans Park

## Site 18

Downtown park area.

### **Equipment budgeted for:**

We would like to commission a large-scale light sculpture for this space.

