

# Tubman-Garrett Riverfront Park

---

## Wilmington, Delaware

Tubman-Garrett Riverfront Park, Wilmington, Delaware  
Request for Qualifications (RFQ)/Request for Proposals (RFP)  
Public Sculpture for the TGRP  
Requested by: Riverfront Wilmington Sculpture Committee

---

May 19, 2011

# contents

---

1	Introduction
2	History and Background
3	RFQ/RFP Overview and Timeline
4	Request for Qualifications
5	Selection Committee Review of Qualifications
6	Request for Formal Proposals
7	Site Information / Design Criteria
8	Exhibits

Figure 1.2 - Park Context (Riverfront Wilmington)

Figure 1.3 - Park site plan with sculpture envelope identified

Figure 1.4 - Proposed sculpture location

Figure 1.5 - View A from Rosa Parks Drive park entrance

Figure 1.6 - View B from pathway of park interior

Figure 1.7 - View C from park interior

Figure 1.8 - View D looking west from park interior

The City of Wilmington, in conjunction with the Riverfront Development Corporation of Delaware and Riverfront Wilmington Sculpture Selection Committee, is seeking artists or artist teams to participate in a competitive design process for the creation of a public sculpture. This sculpture will serve as a focal point for Tubman-Garrett Riverfront Park a public space and special events venue on Wilmington, Delaware's riverfront.

The goal of the open selection and design process is to identify an artist or team with the skills, experience, resources, and vision to create and install a high quality piece of public art. The available budget (provided by both public and private funds) for the sculpture is up to \$220,000 inclusive of all artist/designer expenses, insurance, research, design, travel, fabrication, construction, transportation, materials, fees, and installation costs. Interested artists or artist teams are invited to submit their qualifications, as described in Section 4, to the selection committee no later than **September 30, 2011**. Three to four qualified artists will be identified through this process and will be asked to submit formal proposals as described in Section 6 of this document. Artists selected to submit formal proposals will be notified in writing and provided with additional information regarding the proposals, review of proposals, and final commission.

The following document describes in detail the submission of Request For Qualifications (RFQ), artist selection criteria, submission of Request For Proposals (RFP), a history and context of the site, brief history of the Underground Railroad, and the design requirements for the sculpture.

## **Riverfront**

Throughout the 1800's and 1900's the banks of the Christina River were a source of local industry for the Wilmington economy. Leather tanneries, railroads, warehouses, and ship building were among the many industries that located along the riverfront. The Philadelphia, Baltimore and Washington Railroad occupied a large portion of the land adjacent to the river and had facilities which included two round houses. The Dravo Corporation was a prominent shipbuilder along the riverfront. During World War II the shipbuilding industry produced more than 200 ships and in 1943 employed nearly 11,000 people. Cranes used by the riverfront industries were preserved and incorporated into the Riverfront Wilmington; however, the post-war period marked the slow decline of industry along the riverfront, and by the 1990's the riverfront was occupied by dilapidated warehouses and the remains of industrial production.

In 1995, local officials, business leaders, and citizens began an effort to revitalize the riverfront. The Riverfront Development Corporation of Delaware (RDC) was formed to guide and coordinate these development efforts. Gradually, and with the cooperation of many groups and individuals, the banks of the Christina River transformed from an abandoned and neglected industrial brownfield to a popular destination for dining, shopping, entertainment, business, recreation, and residential living. The development of the Riverfront Wilmington, and Tubman-Garrett Riverfront Park(TGRP) in 1998-99 provided Wilmington residents with public recreational access to the riverfront for the first time, and produced a spark for additional investment and development that followed its development.

## **Tubman-Garrett Riverfront Park**

Riverfront Park is adjacent to the Market Street Bridge where slaves were transported to Freedom. Named for Harriet Tubman and fellow abolitionist Thomas Garrett, the park was designed in the amphitheater style to complement the architecture of the train station district designed in the early 1900's by the renowned Philadelphia architect Frank Furness.

Ideal for passive recreation, the 2.4 acre Tubman-Garrett Riverfront Park is conveniently located adjacent to the Joseph R. Biden Jr. Railroad Station, normally called Wilmington Station which is a passenger rail station in Wilmington, Delaware, that provides much foot traffic to and from financial and other businesses located in the city center nearby. Due to the convenience and the scenic location of the park, it is used for many civic uses and events throughout the year such as The People's Festival, Riverfront Blues Festival, River Fest and many others. The park serves as a crucial part of the community bringing relief to the hard urban landscape and a gathering space for people's activities.

## Harriet Tubman

Harriet was born in slavery; she was one of eleven children of Benjamin and Harriet (Green) Ross. Her birthplace was on an estate in Dorchester County, Maryland, and the time has been fixed as in the decade of 1815 – 1825. “I grew up like a neglected weed--ignorant of liberty, having no experience of it,” declared Tubman in an 1855 interview with Benjamin Drew, an educator and part-time journalist.



Her premier claim to recognition rests in the wonderful manner in which she operated for 15 years the Underground Railroad. Her shrewdness in doing this work was nothing short of miraculous. She made no less than 19 trips to the South, and this in the face of dangerous obstacles. In every railroad station and post office were placards by State of Maryland that offering \$12,000 reward for her body-dead or alive. Also a reward of \$40,000 additional was offered by an association of Southern planters whose slaves she was spiriting away to freedom.

## Thomas Garrett

Born on August 21, 1789 in Upper Darby, PA, to a white Quaker, whose family lived in Wilmington’s nearby Quaker Hill neighborhood. It was here, when Garrett was a child, that slaves traveling through the Underground Railroad often found refuge hid runaway in his farmhouse which was known as “Thornfield.”



Garrett credited that experience as transcendental later directing his life’s work toward aiding in the escapes of slaves. The incident, in which a black servant employed by Garrett’s family was kidnapped and nearly forced into slavery, was a watershed event for the young Garrett, who would devote his life to the abolitionist cause.

Thomas Garrett is one of the most prominent figures in the history of the Underground Railroad. He has been called Delaware’s greatest humanitarian and once acknowledged helping more than 2,700 slaves received financial assistance, directions, and moral encouragement in their flight from bondage to freedom. No other point along the entire Underground Network handled as much human traffic as did the Garrett house. For many fugitive slaves en route to Philadelphia and other points North, the City of Wilmington became known as “A Last Stop Before Freedom”.

## **Tubman and Garrett and the Underground Railroad**

Harriett Tubman and Thomas Garrett worked closely together on the abolitionist cause playing key roles in separate areas. Tubman who led the slaves seeking refuge often took shelter in Garrett's homestead in Wilmington who provided her with money and shoes to carry on with the mission. Garrett worked closely with his younger brother Edward to pass Tubman and freedom-seeking slaves through Upper Darby, by way of the Underground Railroad.

For more information about Garret, Tubman, and the Underground Railroad review these background information websites:

<http://www.harriettubman.com/plaque.html>

<http://www.fee.org/pdf/the-freeman/folsom0105.pdf>

a. Why is this being done?

Public art has the power to: transform how we perceive the places where we live, work, and play; enliven our public spaces; awaken our thinking about our history; and change our communities into environments that invite interaction. Public art can connect strangers, invite children to ask questions, and provide a place for respite that can calm hurried lives. Public art enhances the quality of life by encouraging a deeper understanding of place with aesthetic objects that touch people and can be touched by people today and in the future.

Wilmington, Delaware was a major station on the Underground Railroad. The Harriet Tubman/Thomas Garrett public art project should speak to and about the relationship that was forged between Harriet Tubman and Thomas Garrett (who lived in Wilmington) in the efforts to free slaves from the bonds and inhumanity of slavery. The project should also symbolize and recognize the importance and necessity of whites and blacks working together on the underground railroad to aid fugitive slaves escaping the south in search of freedom in the North.

b. Who is sponsoring the commission of the sculpture?

- Mayor James M. Baker, City of Wilmington
- Mayor's Office of Cultural Affairs
- Wilmington Arts Commission
- Riverfront Development Corporation of Delaware

c. What is the funding source?

- Funding is secured and provided by the City of Wilmington's Percent for Art Fund.

d. What role does the project play in Wilmington's public art objectives?

- Attracts cultural tourism to the City
- Makes the City more dynamic
- Major component in the City's economic development strategy
- Provides a creative historical marker that celebrates the role that Harriett Tubman and Thomas Garrett played in the Underground Railroad movement.

The artist selection process is a two-phase process with a Request For Qualifications in Phase I and a formal Request For Proposals in Phase II for selected artists.

## Phase I - Overview

A. Request for Qualifications (RFQ) – Interested artists are invited to submit portfolios and 2- dimensional sketches of initial ideas for the sculpture electronically. Refer to Section 4 for complete Portfolio submission and RFQ requirements.

B. Review of Qualifications – The Selection Committee will review eligible portfolios and select at least three (3) artists or teams as semifinalists to submit formal proposals in Phase II of the selection process.

## Phase II - Overview

A. Request for Proposals (RFP) - Artists or teams selected semifinalists for Phase II of the process will respond to a formal Request for Proposals, which shall include necessary supporting sketches and materials, a written narrative, a work plan and fee schedule.

B. Review of Proposals – Selection Committee will review proposals, select preferred proposal, and enter into a contract for commission of the selected sculpture.

## Timeline

<b>September 30, 2011</b>	Deadline for submission of Request For Qualifications (RFQ).
<b>October 5, 2011</b>	Selection Committee meets to review qualifications and portfolios.
<b>October 11, 2011</b>	Artists selected to submit formal Request for Proposals – notified in writing via e-mail by this date.
<b>December 18, 2011</b>	Deadline for submission of Request For Proposals (RFP).
<b>January 13, 2012</b>	Selection Committee meets to review proposals.
<b>February 1, 2012</b>	Selection Committee announces winning artist.
<b>No Later than August 15, 2012</b>	Sculpture to be installed.
<b>August 21, 2012</b>	Dedication ceremony. (on Harriet Tubman’s birthday)



## **Eligible Portfolios**

Only artists with previous experience in the design, construction, and installation of figurative sculpture for outdoor public spaces are encouraged to apply.

## **Submission of Qualifications**

Interested, eligible artists must submit qualifications, as described below, no later than **September 30, 2011** in order to be considered. All submissions will be electronic through [callforentry.org](http://callforentry.org) CaFE website. All applicants must go to the specified online submission site, create a profile/account, fill in the application and go through Checkout before the due date to qualify. Items listed below are required as part of your submission. The information that can be uploaded as \*PDFs to the website.

---

1. Current resume or similar document of no more than three (3) pages describing the artist's relevant experience. Artist teams shall submit a resume for each principal team member.
  2. Up to (10) images (JPG format only - size is listed on the CaFE site) of recent and/or relevant work. Include detail views.
  3. Three (3) references with complete contact information from the artist's most recent or relevant projects.
  4. A maximum of three (3) selections of supporting materials (reviews, news articles, gallery guides, etc.)
  5. A letter of interest with a discussion of style; conceptual sculpture theme; \*black-and-white preliminary sketch/renderings no larger than 8 ½ x 11" of possible ideas (no 3-D work); and the statement on the artist's ability to complete, direct, and coordinate the installation of the project by the deadline.
- 

\* Individual submission elements (multi page resume, resumes of team members...etc.) should be submitted as a single bundled PDF as the CaFE web site only allows a single upload per category.

RFQ CHECKLIST: ( Multiple pages must be bundled into a single PDF for each category)

\_\_\_ CURRENT RESUME

\_\_\_ SUPPORTING DIGITAL IMAGES (UP TO 10 IMAGES)

\_\_\_ REFERENCES

\_\_\_ SUPPORTING MATERIALS

\_\_\_ LETTER OF INTEREST

---

All RFQs must be submitted on CaFE website and have gone through “Check Out” no later than **September 30, 2011**. Late or incomplete submissions will not be considered. No emailed or faxed RFQs will be accepted.

- Step 1. Log on to  
<https://www.callforentry.org>  
create your page
- Step 2. Submit all RFQs to City of Wilmington:Tubman-Garrett Riverfront Park Sculpture.
- Step 3. After the application is complete, go through ‘Check Out’ to submit your application.

All eligible, complete RFQs will be evaluated by the Sculpture Selection Committee. The Selection Committee will be comprised of individuals from the City of Wilmington, the Riverfront Development Corporation of Delaware, the Delaware Art Museum, Christina Cultural Arts Center, two community members, and the landscape architect. The committee will evaluate RFQs based on the following criteria:

- Artistic excellence and originality as evidence by portfolio images and supporting materials.
- Appropriateness of the artist's medium, style, and experience in relation to the project goals as determined by the consensus of the Selection Committee.
- Artist's ability to respond creatively and uniquely to the site-specific design challenges, special limitations, and site character.
- Artist's experience with similar projects and demonstrated ability to successfully meet the requirements of this project.
- Artist's ability to capture the essence of the City of Wilmington's role in the Underground Railroad as exhibited by Harriet Tubman and Thomas Garrett.

Prior to scoring the submitted portfolios, the Selection Committee will meet as a group to review and discuss each portfolio. Individual Committee members will then score each portfolio based on the following criteria:

- 50% - Images of previous figurative work
- 30% - Conceptual drawings and discussion of artistic intent/theme
- 20% - Overall evaluation

Each artist will receive an individual score from each committee member. Artists' scores will be tallied and 3 will be selected as semifinalists for Phase II of the selection process. All scores shall be kept in possession of the committee and not released to the public nor shared with the artist.

Following the scoring of portfolios all artists will be notified of their status and semifinalists selected for the second phase will be asked to submit formal proposals (RFP).

## Formal Request for Proposals

### Proposal Submission

Upon notice in writing from the Selection Committee, three (3) to four (4) artists will be selected to submit formal proposals (RFP) based upon their submissions for the portfolios. Semifinalists will be given a stipend to complete the requirements of the RFP and the Selection Committee will schedule interviews with each semifinalist.

Below is a description of the process in brief:

1. Semifinalists will prepare a proposal based upon the design criteria (See section 7) and deliver it to the Sculpture Committee at or before **December 18, 2011**. Proposals should be delivered to:

Attn: Sculpture Selection Committee c/o Megan McGlinchey  
Riverfront Development Corporation of Delaware  
800 South Madison Street.  
Wilmington, DE 19801

2. The Proposal shall consist of the following items:

- A. A scaled maquette of the proposed sculpture. This will be made to a prescribed scale and will provide sufficient detail for the Selection Committee to understand the scope, detail, and intent of the work.
- B. A written narrative of the proposed sculpture detailing the thematic development and interpretation of symbolic details.
- C. A schedule of proposed materials, fees, and work plan/calendar up to and including the installation of the sculpture in the park.

3. The Committee will meet in closed session for discussion and scoring of the proposals according to criteria similar to those applied to scoring the portfolios.

4. The sculpture commission will be awarded to the artist receiving the highest cumulative score.

5. After the selected sculpture is delivered and installed at the specified location, the ownership of all images, written materials, maquette, and finished works of art shall be the property of the City of Wilmington. The City may relocate the original art work at any time.

### **Proposal Stipend**

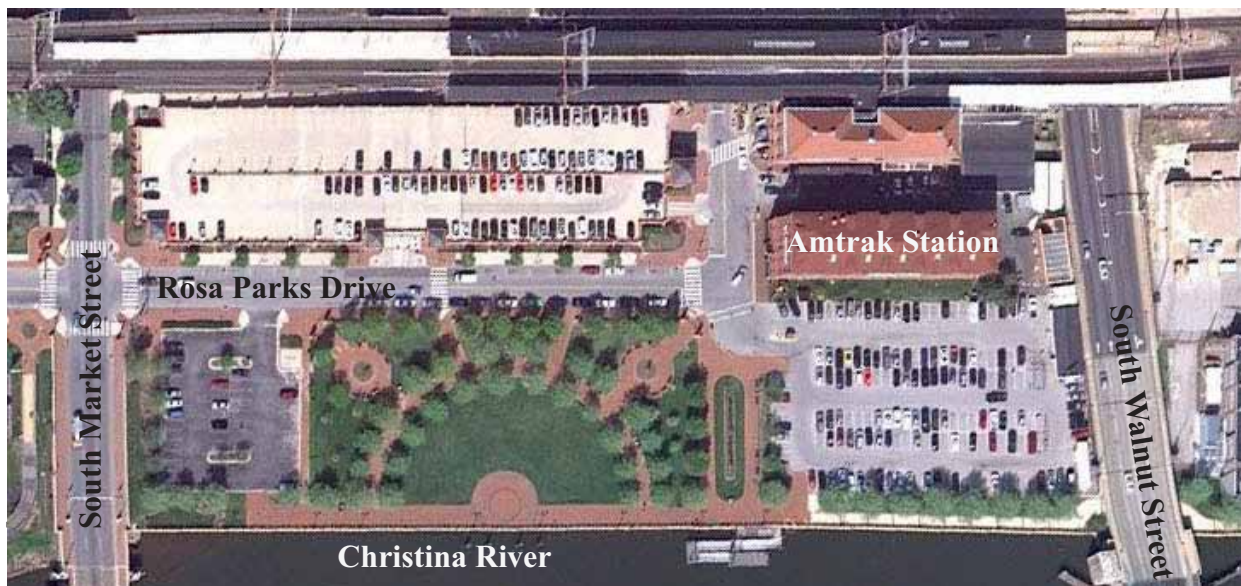
Artist selected to submit formal proposals shall be provided a stipend consistent with the assignment to submit a maquette that demonstrates the proposed work using the specified medium and subject matter, plus suggested modifications.

The stipend shall be \$5,000 per artist. The contract for the artist receiving the final commission will include the stipend.

As previously mentioned, the goal of this RFP/RFQ is for the creation and installation of a high quality piece of public sculpture that will serve as a focal point for the existing TGRP park. The sculpture should contribute to a sense of place and identity for the park. Likewise, it is expected that the sculpture will be designed and constructed so that it will gracefully age as an integral piece of the civic landscape.

### **Park Context**

The park in which the selected sculpture will be placed is along the bank of the Christina River. (See figure 1.0 below) It is an urban re-development with residential, retail and business functions. Immediately adjacent to the park is the river, parking garage, surface parking, and Amtrak station.



**Figure 1.0**



The park lies at the heart of the Riverfront re-development located at the intersection of Market Street and Rosa Parks Drive; nestled in between Christina River and the Joseph R. Biden Jr. Railroad Station (Wilmington Amtrak station). The park (See figure 1.1 below) gives relief to the urban setting to the city center of an otherwise harsh hardscape environment. The brick paving that defines the sidewalks of the Waterfront Park streetscapes extends into the park creating one large unified space separated by delicate wrought iron fence and tree lined turf panels. At the center of the park, facing the river is an amphitheater space for concerts and summer gatherings. A large semicircular lawn panel gives ample space for people to stretch out and enjoy the view of the river. Extending outward from the amphitheater plaza are four pathways. Two leading to the corner of larger thoroughfare streets, Market and Chestnut and two leading to the train station. The outer two leading to the streets are broken up by a small circular seating space with a circular flower bed as a focal point. The most prominent space in the plaza has been reserved for a piece of public art (See Figures 1.3-1.4). Given its location and the surrounding land uses the sculpture will be viewed by a diverse audience and from many vantage points. Nighttime lighting is planned for the sculpture.

**Design Envelope**



**Figure 1.1**

The height of the sculpture is flexible, but should be in context to the parks gateway entry. Initial discussions with the landscape architect suggest a height range between 7'-9'. Figures 1.4-1.8 provide various renderings of the park and indicate the sculpture envelope with a yellow box.

### **Design Themes**

The piece should celebrate the partnership between Tubman and Garrett and the commitment and sacrifices they made for the cause of emancipation. The piece should also be representative of the efforts of a greater community of sympathizers who worked within the greater movement to free African Americans from slavery. It is envisioned that the piece would contain figurative representation of both Tubman and Garrett and contain other elements that symbolize the various aspects of the movement. Fountains and other water elements are discouraged.

### **Design Budget**

The budget available for the selected artist is \$220,000. This amount includes, but is not limited to, the artist/designer expenses, insurance, research, design, travel, fabrication, construction, transportation, materials, fees, and installation costs of the sculpture. All structural foundation design work will be completed by the project engineer.

### **Notice of Cancellation**

The Selection Committee reserves the right to cancel or withdraw this Request for Qualifications/Request for Proposals at any time. In doing so, the Selection Committee will not reimburse artists for any costs associated with the development or submission of the Qualifications Portfolio. However, if the Selection Committee cancels the selection process after the notification of semifinalists, and after the semifinalists have been working for a period of at least two weeks, the Board shall compensate the artists with the approved stipend as noted above and no more.

### **Notice of Ownership**

After the selected sculpture is delivered and installed at the specified location, the ownership of all images, written materials, and maquettes shall be the property of the City of Wilmington. The City may relocate the original art work at any time.

inclusive of all artist/designer expenses, insurance, research, design, travel, fabrication, construction, transportation, materials, fees, and installation costs.



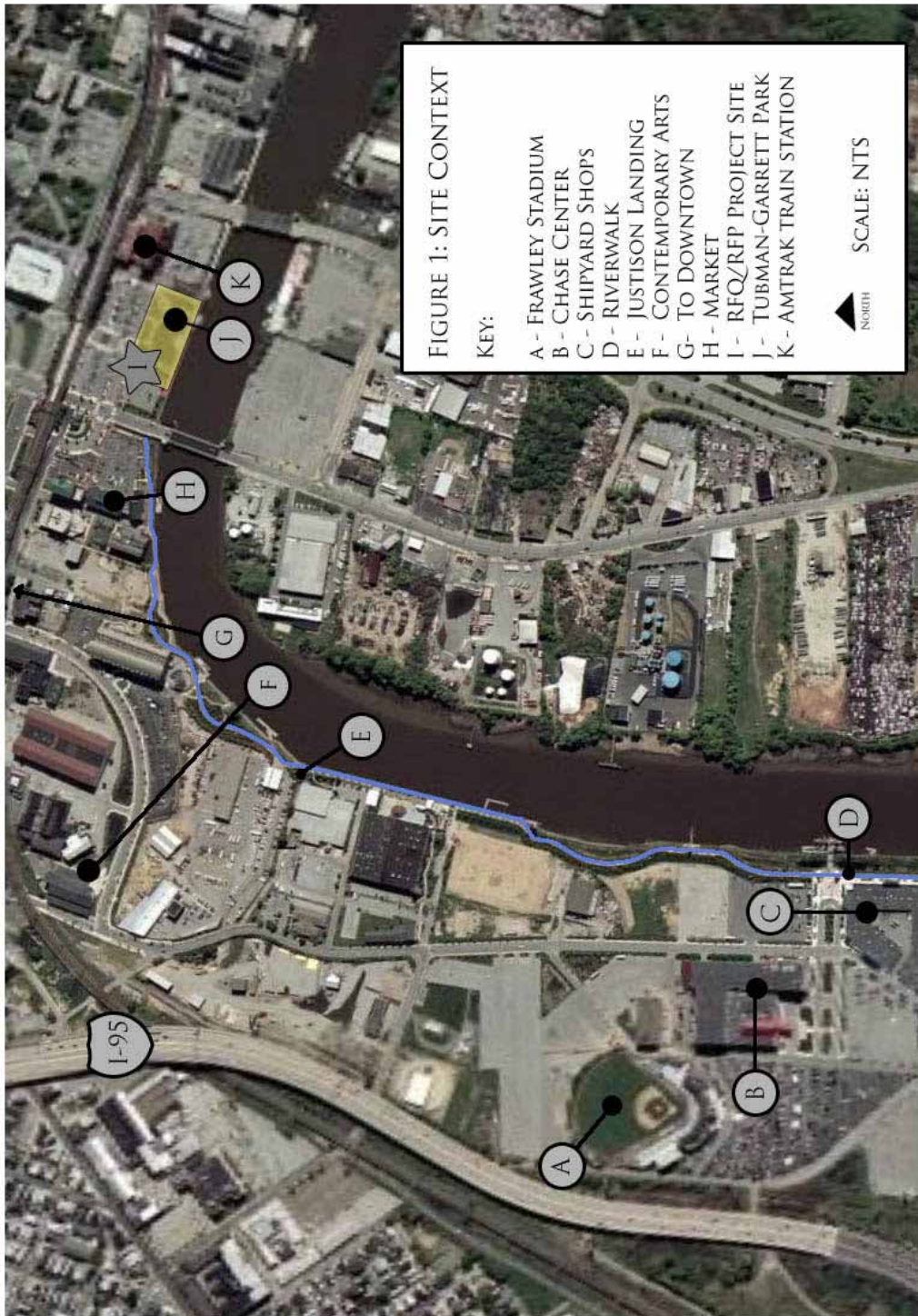


Figure 1.2 - Site Context (Riverfront Wilmington)

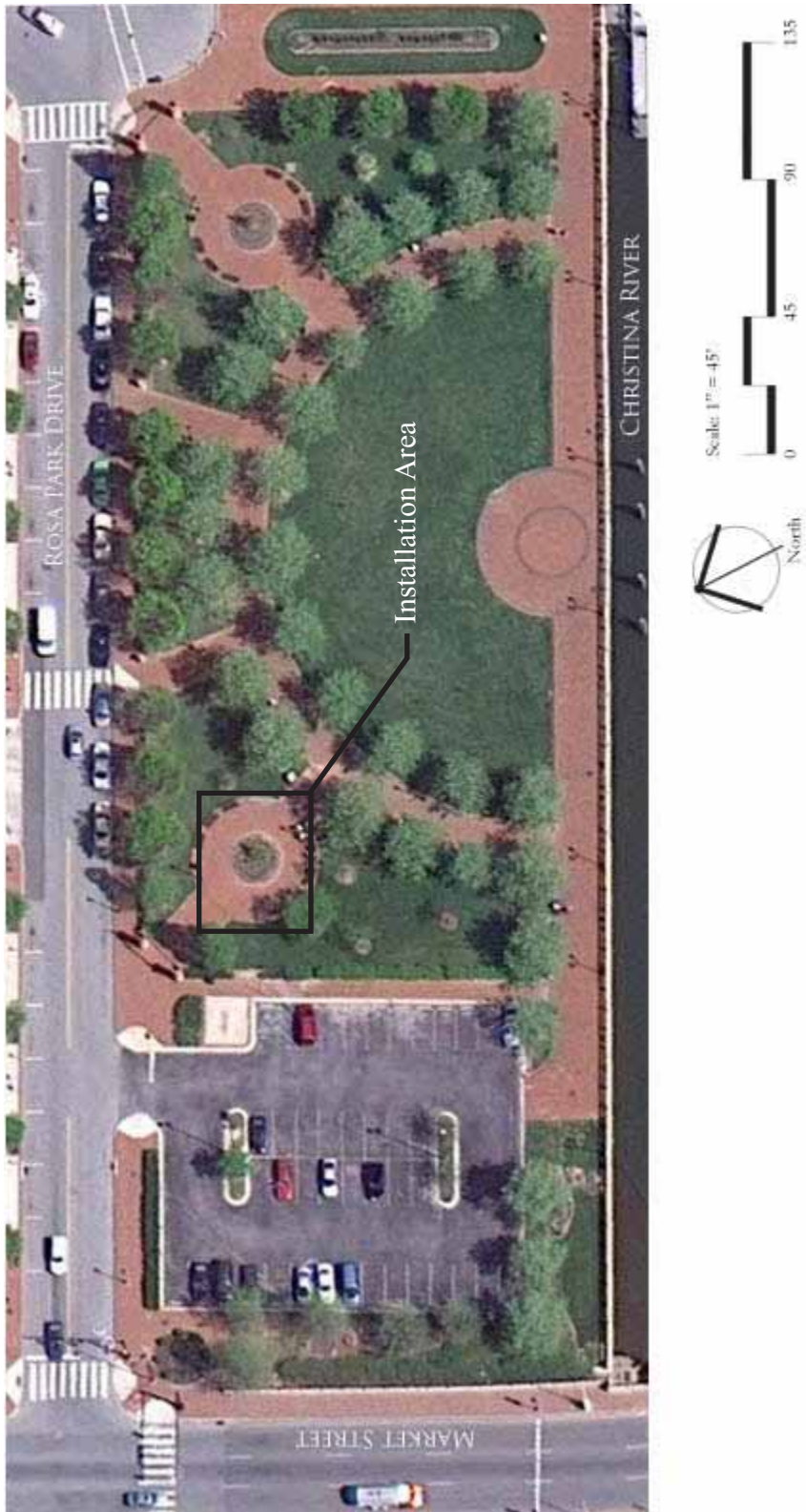


Figure 1.3 - Park site plan with sculpture envelope identified



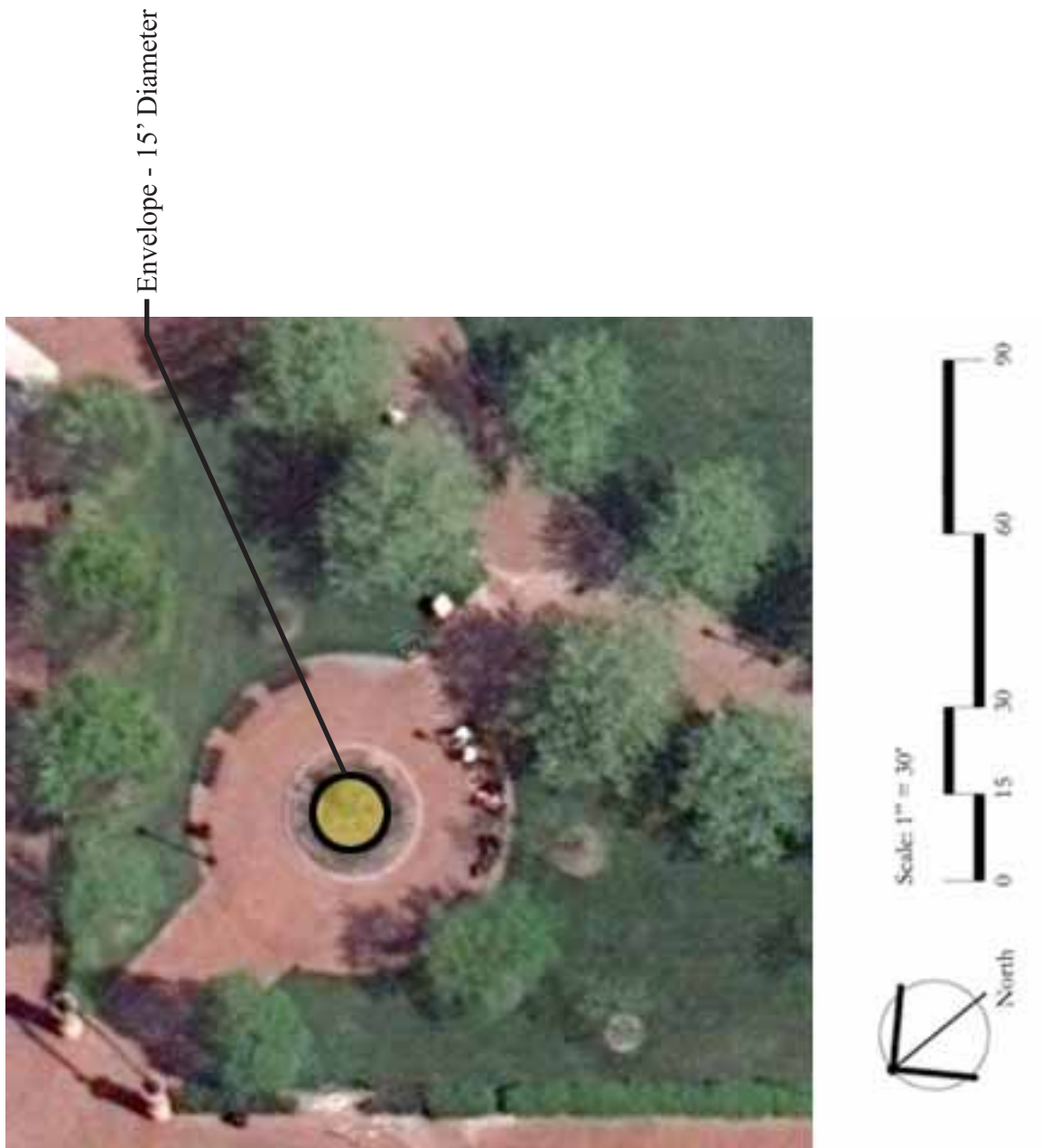


Figure 1.4 - Proposed sculpture location



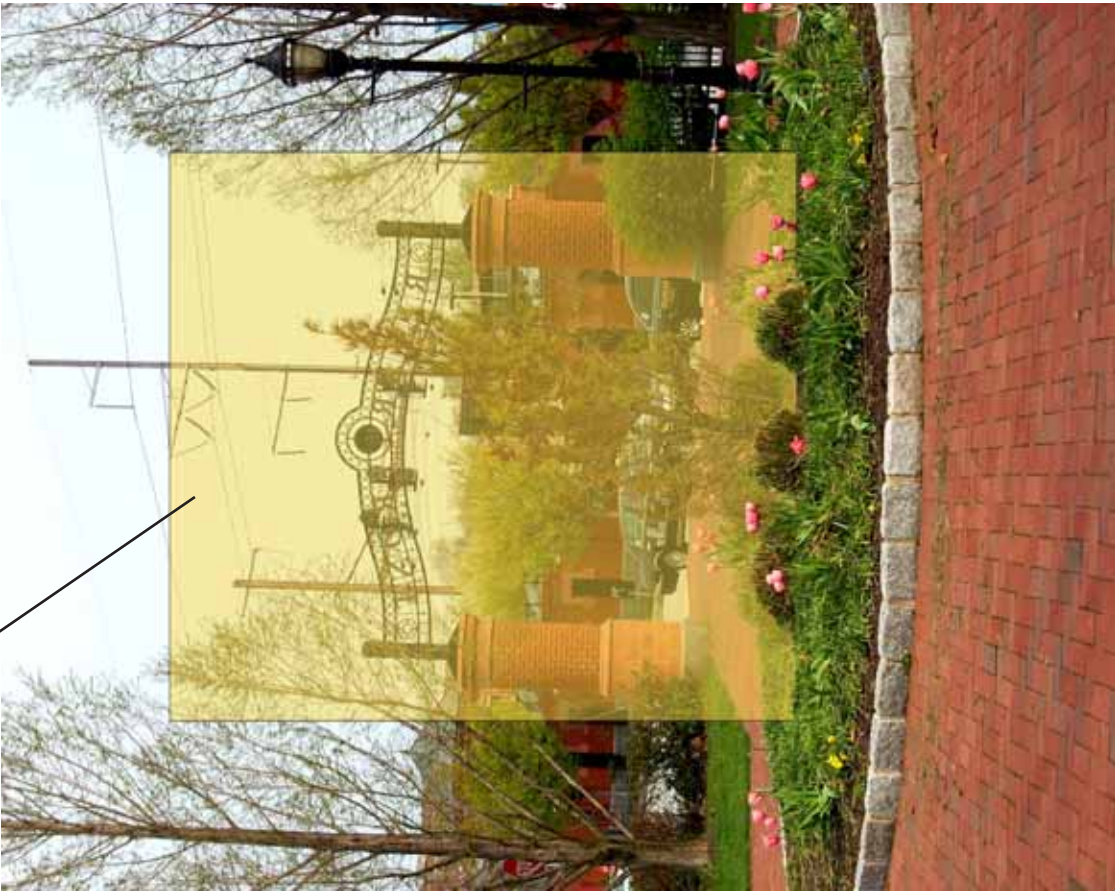
Snapshot Legend

Sculptural Envelope  
\* refer to text for exact dimension

Figure 1.5 - View A from Rosa Park Drive park entrance



Snapshot Legend



Sculptural Envelope  
\* refer to text for exact dimension

Figure 1.6 - View B from pathway of park interior



Sculptural Envelope  
\* refer to text for exact dimension



Figure 1.7 - View C from park interior



Snapshot Legend

Sculptural Envelope  
\* refer to text for exact dimension



Figure 1.8 - View D looking west from park interior



Snapshot Legend