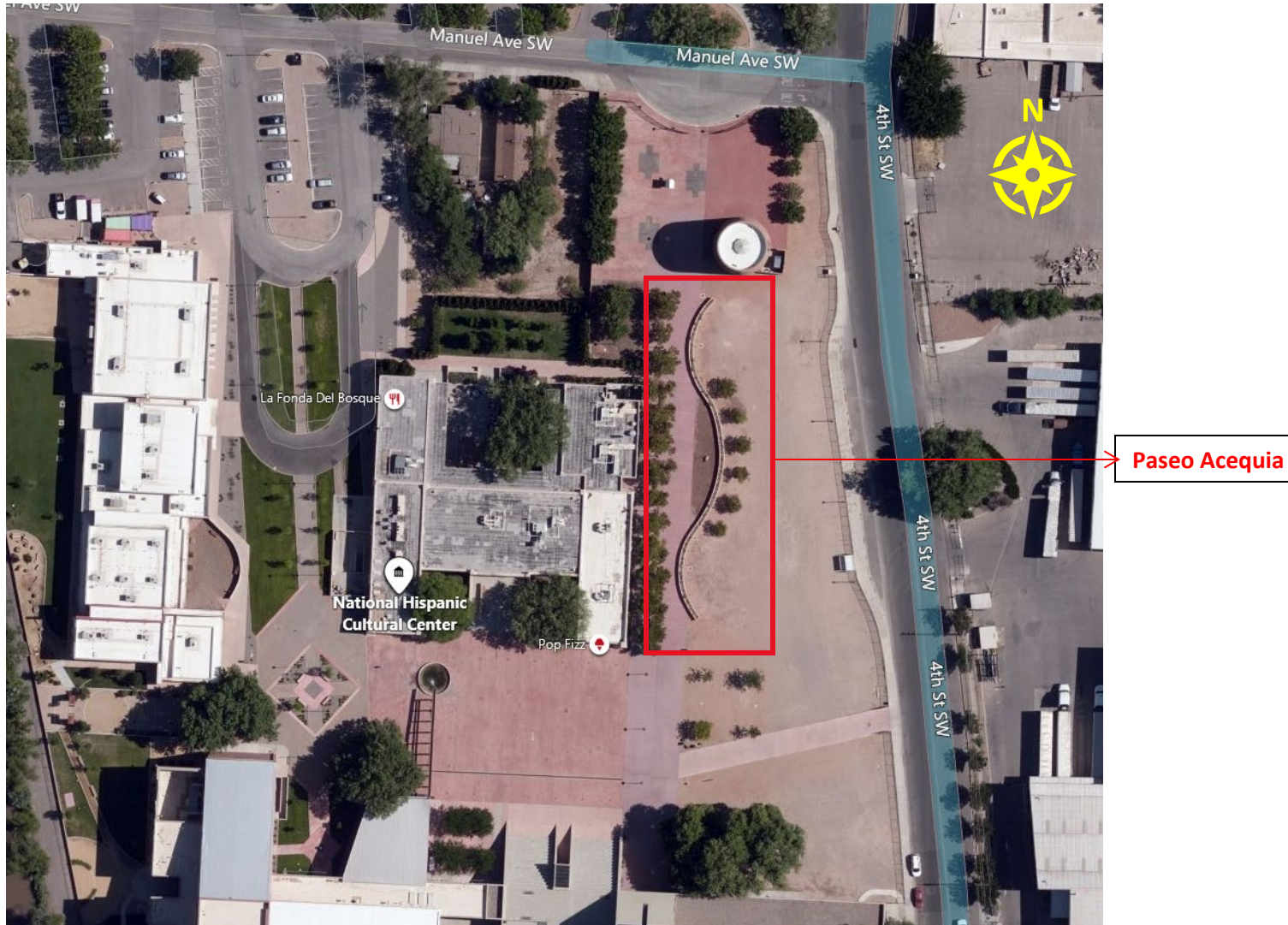


National Hispanic Cultural Center (NHCC) – Paseo Acequia Site Information

Aerial of NHCC Campus



Aerial of Acequia Paseo – Boundaries outlined below – Acequia is approximately 250' in length



Artists can consider the concrete acequia itself (on/around/in), as well as the rocky area in the center between the acequia and the sidewalk. You will also notice flagpoles along the eastside of the acequia. These flagpoles will be removed and moved to a new location in the coming years. The six trees on the eastside will remain in place.

South end of Acequia Paseo



Measurement of height of Acequia (approx. 34" high)



View of interior of Acequia (Interior can be considered; soil/plants can be removed)



View of graveled/mulched area between sidewalk and acequia



Closeup of Bank of America stone in center of graveled/mulched area



North end of Paseo Acequia

