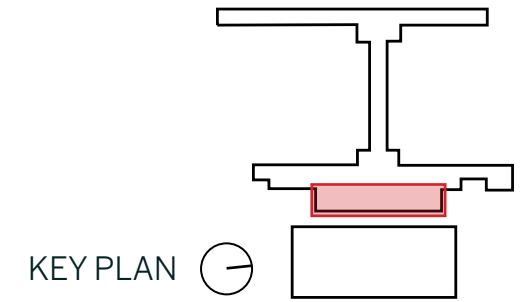


TERMINAL - CHECK-IN HALL

HANGING INSTALLATION



LOCATION DESCRIPTION:

All departing passengers pass through the check-in hall on their way to security and then to the gates. The hall marks a major moment in the passenger experience as a “front door” for Kansas City. Distinctive steel “Y” columns support the roof and provide a broad, column-free interior space measuring over 700 feet long, 90 feet wide, and 35 feet high. The Hall is appointed with terrazzo flooring, bronze-colored facade supports, natural hemlock wood ceilings and a monumental wall of vein-cut Missouri limestone.

COMMISSION DESCRIPTION:

A hanging installation suspended from the roof structure of the hall. Location within the hall to be proposed by the artist at a scale commensurate with the space.

STRUCTURAL PROVISIONS:

Load on roof structure not to exceed 1 psf with distributed attachment. Engineering of installation to be provided by artist. Any secondary structure spanning between terminal structure to be hidden from view behind terminal finishes. All attachments to terminal structure to be approved by project structural engineer. Interaction between art installation supports and ceiling to be approved by project architect.

ELECTRICAL AND LIGHTING PROVISIONS:

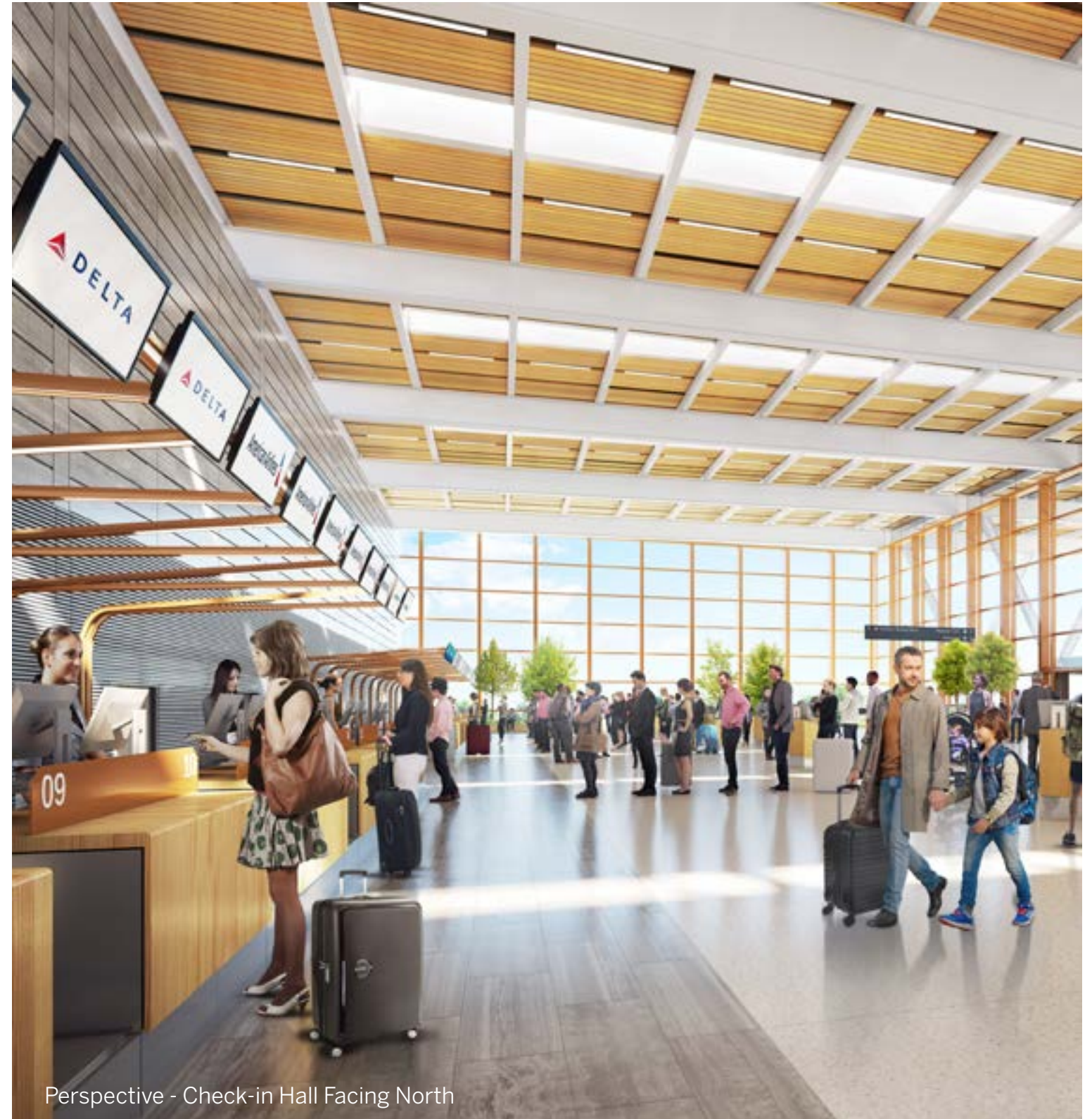
Electrical or electric lighting provisions for art installation to be supplied through commission budget. Any electrical service to be concealed within existing architecture. Installation will be exposed to natural light through clerestory windows located within the roof. Installation shall not interfere with functional lighting requirements within the hall.

MECHANICAL PROVISIONS:

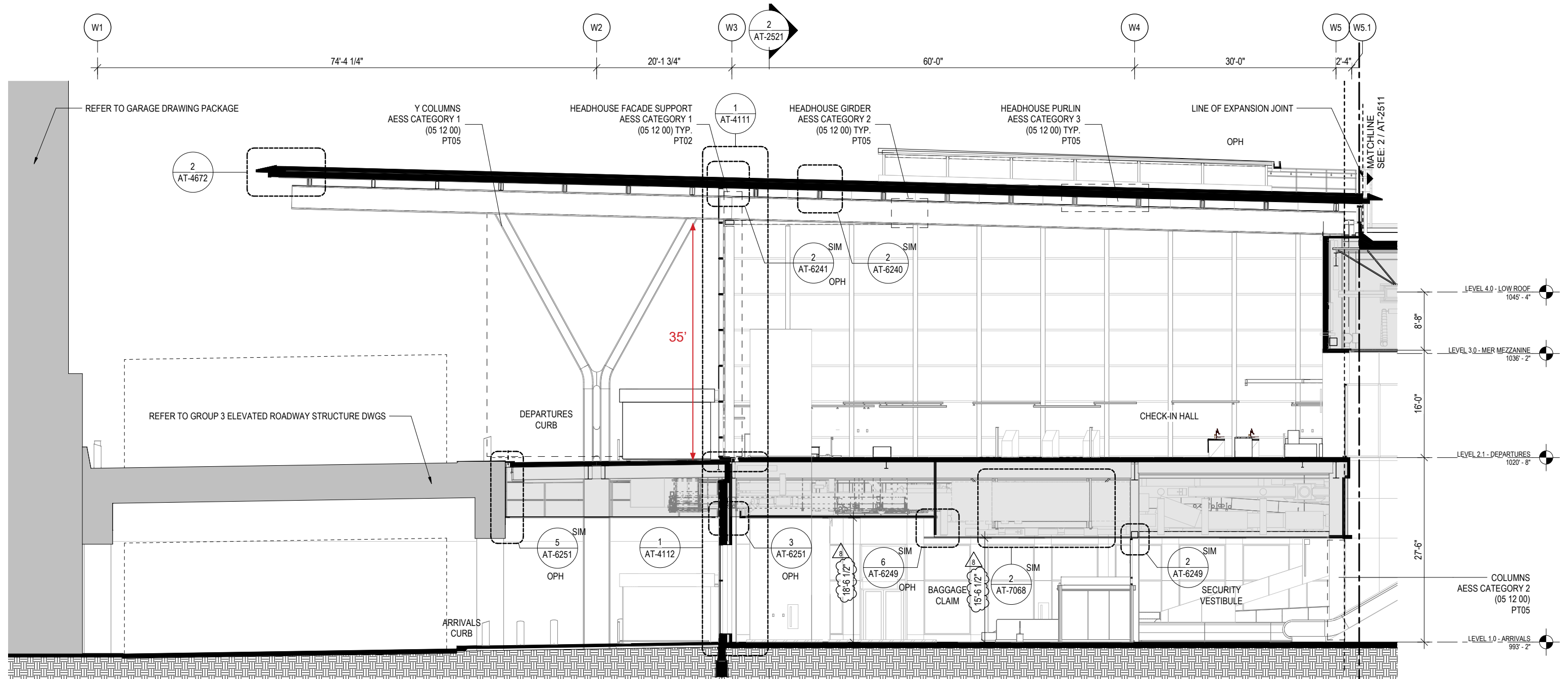
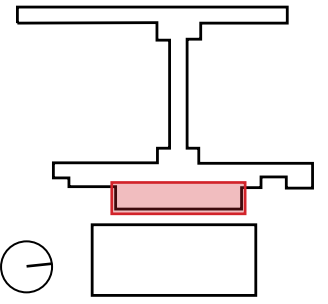
Expected air temperatures in the hall are within 70-75 degrees Fahrenheit and 50 - 15% relative humidity. Air delivery is provided at two continuous elevations on the west wall of the check-in hall. Installation shall not interfere with air distribution. Mechanical service employs high velocity air distribution within a large volume space.

CODE, LIFE SAFETY, AND ADA REQUIREMENTS:

The installation shall not obstruct paths of passenger circulation or egress. Fire sprinklers are located within the ceiling in this space. The art installation shall conform to the relevant codes including IBC 2012 and NFPA 13. All materials used must be within the fire and smoke classifications specified by code.



TERMINAL - CHECK-IN HALL HANGING INSTALLATION



Partial Section - Check-in Hall Facing South
Not To Scale