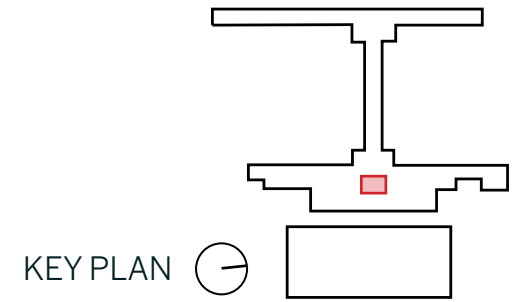


# TERMINAL - ESCALATORS TO BAGGAGE CLAIM HANGING INSTALLATION



## LOCATION DESCRIPTION:

All arriving passengers descend from the departures level down to the baggage claim by way of a bank of escalators and elevators. This double-height space spans both the departures and arrivals level. The space is visible from the check-in hall through a glass wall. Primary finishes within the space are large format porcelain tile walls, acoustic tile ceilings, and terrazzo floors.

## COMMISSION DESCRIPTION:

A hanging installation is suspended from the roof structure. The installation is located between the escalators and visible to passengers descending to the baggage claim hall.

## STRUCTURAL REQUIREMENTS

Load on roof structure not to exceed 1 psf with distributed attachment. Joist structure will require analysis for asymmetrical loading once preliminary installation design is complete. Support shall be supplied only from overhead structure and shall not be suspended at slab edge. Engineering of installation to be provided by artist. Any secondary structure spanning between terminal structure to be hidden from view behind terminal finishes. All attachments to terminal structure to be approved by project structural engineer. Interaction between art installation supports and ceiling to be approved by project architect.

## ELECTRICAL AND LIGHTING PROVISIONS:

Electrical or electric lighting provisions for art installation to be supplied through commission budget. Any electrical service to be concealed within existing architecture. Installation will be exposed to natural light through clerestory windows located within the roof. Installation shall not interfere with functional lighting requirements within the space.

## MECHANICAL PROVISIONS:

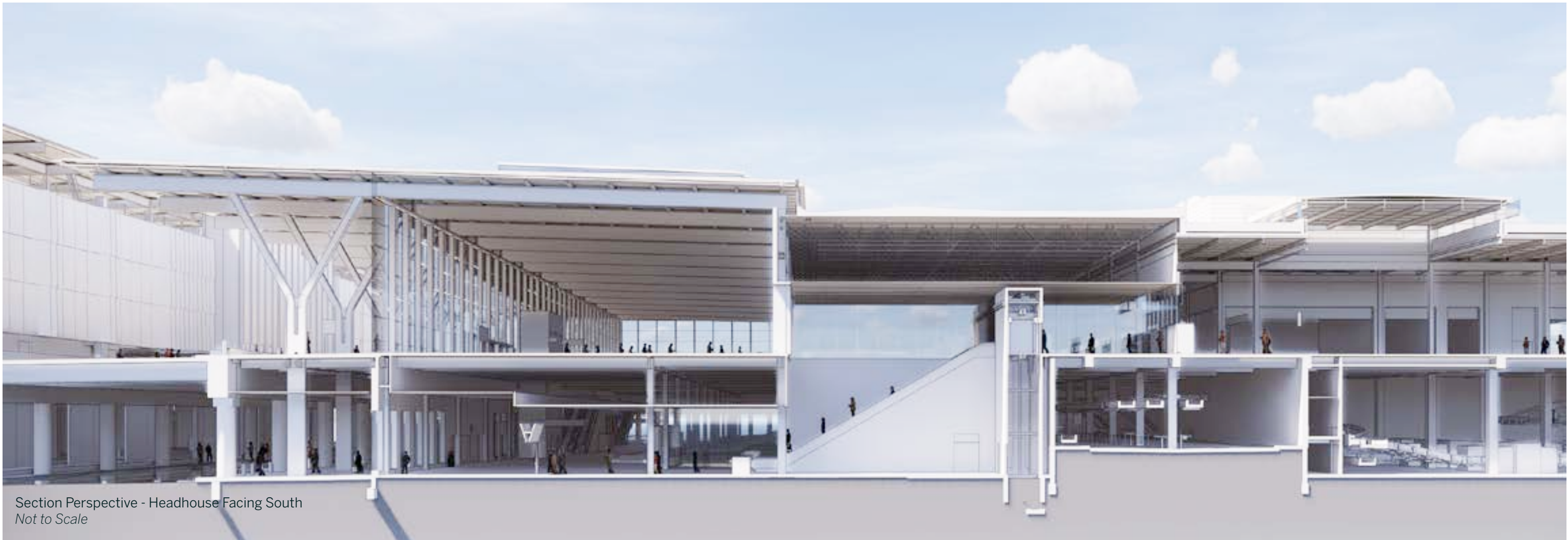
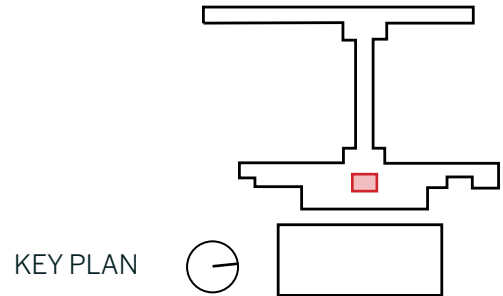
Expected air temperatures in the hall are within 70-75 degrees Fahrenheit and 50 - 15% relative humidity. Air delivery is provided at two continuous elevations on the west wall of the check-in hall. Installation shall not interfere with air distribution. Mechanical service employs high velocity air distribution within a large volume space.

## CODE, LIFE SAFETY, AND ADA REQUIREMENTS:

The installation shall not obstruct paths of passenger circulation or egress. Fire sprinklers are located within the ceiling in this space. The art installation shall conform to the relevant codes including IBC 2012 and NFPA 13. All materials used must be within the fire and smoke classifications specified by code.



# TERMINAL - ESCALATORS TO BAGGAGE CLAIM HANGING INSTALLATION



Conceptual perspectives show spatial configuration only. Refer to contract drawings for dimensions, finishes, and final design.