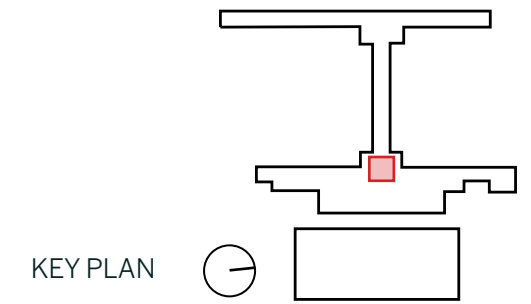


TERMINAL - RETAIL NODE A

“FOUNTAIN”



LOCATION DESCRIPTION:

All passengers departing from and arriving to the terminal pass through the A Concourse Retail Node. This is the first space passengers see after they clear security and the last space they see before descending to the baggage claim hall. This is the central gathering space of the terminal where passengers will converge to sample local shops and restaurants, enjoy musical performances, and rest between flights. At the center of the node, the roof lifts, allowing daylight through a set of clerestory windows. Seating surrounds this central space. The primary finishes in the space are terrazzo floors, large-format porcelain tile walls, and hemlock wood ceilings.

COMMISSION DESCRIPTION:

The installation is inspired by Kansas City’s history as “The City of Fountains.” While no water may be used in this location due to its position above the terminal’s baggage system, it is intended to embody the qualities of a fountain and may be hung and/or floor mounted. The installation is centered on the clerestory “popup.” KCI intends to host musical performances in the space adjacent to the installation.

STRUCTURAL PROVISIONS:

Load on roof structure not to exceed 1 psf with distributed attachment. Floor loading not to exceed 50 psf. Engineering of installation to be provided by artist. Any secondary structure spanning between terminal structure to be hidden from view behind terminal finishes. All attachments to terminal structure to be approved by project structural engineer. Any interaction between art installation supports and ceiling to be approved by project architect.

ELECTRICAL AND LIGHTING PROVISIONS:

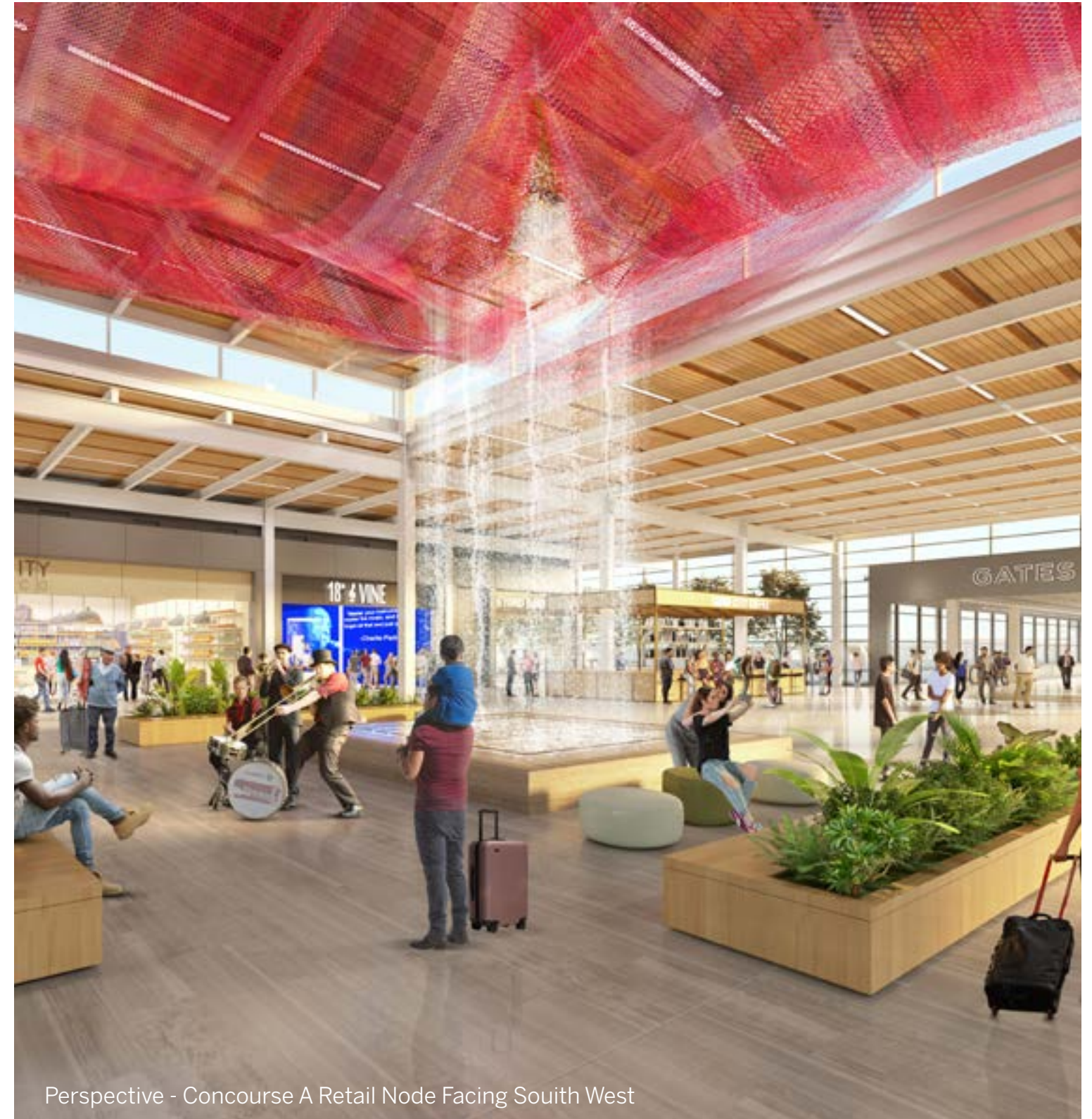
Electrical or electric lighting provisions for art installation to be supplied through commission budget. Any electrical service to be concealed within existing architecture. Installation will be exposed to natural light through clerestory windows located within the roof. Installation shall not interfere with functional lighting requirements within the space.

MECHANICAL PROVISIONS:

Expected air temperatures in the space are within 70-75 degrees Fahrenheit and 50-15% relative humidity. Air delivery is provided from the walls at the perimeter of the space. Installation shall not interfere with air distribution. Mechanical service employs high velocity air distribution within a large volume space.

CODE, LIFE SAFETY, AND ADA REQUIREMENTS:

The installation shall not obstruct paths of passenger circulation or egress. Fire sprinklers are located within the ceiling in this space. The art installation shall conform to the relevant codes including IBC 2012 and NFPA 13. All materials used must be within the fire and smoke classifications specified by code.

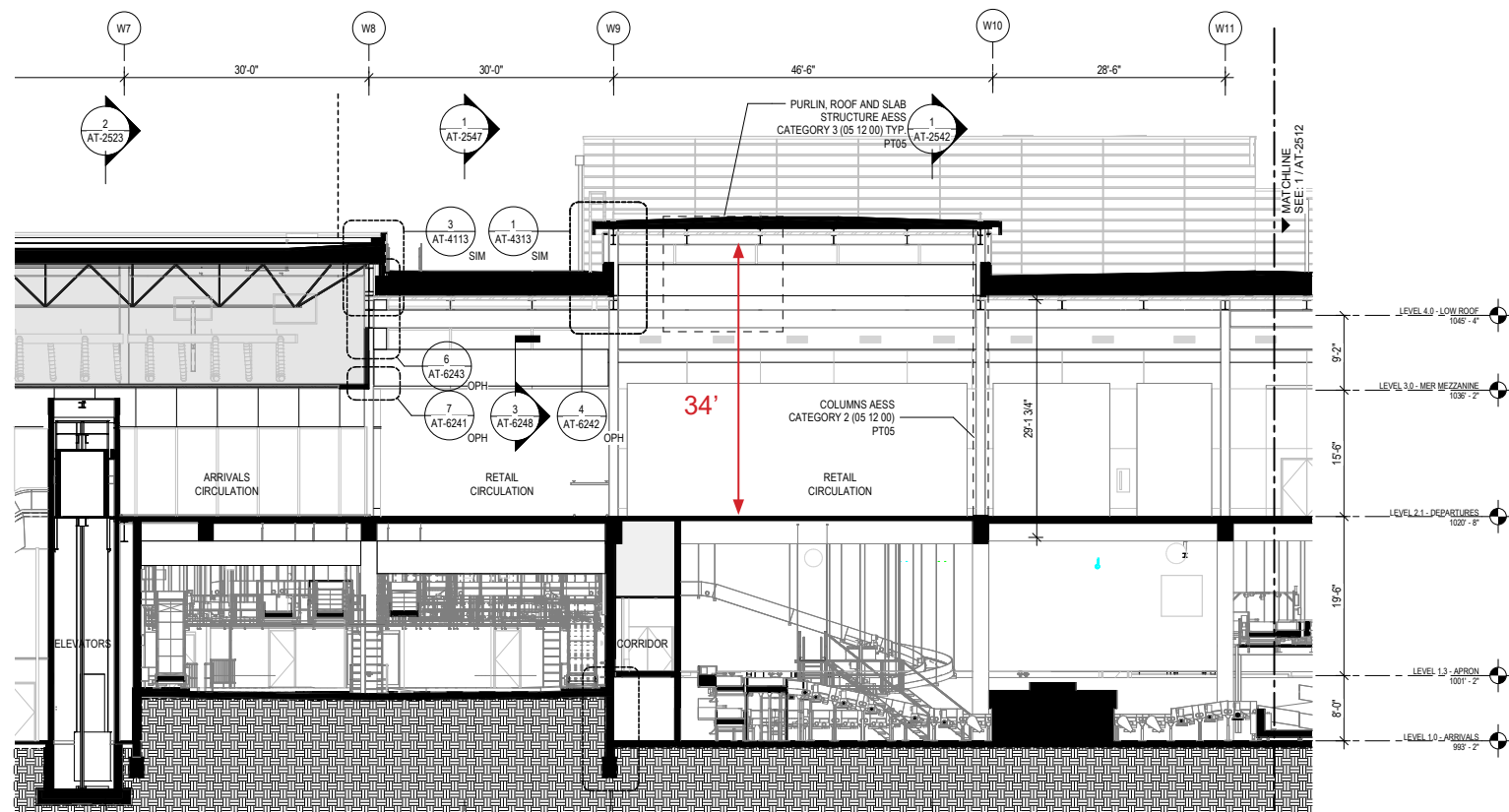
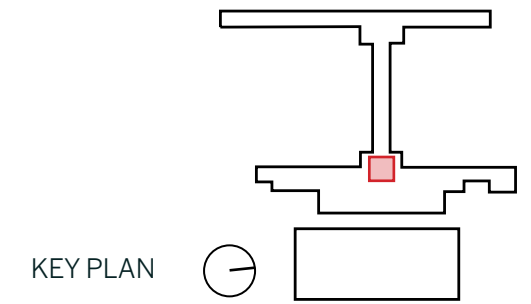


Perspective - Concourse A Retail Node Facing South West

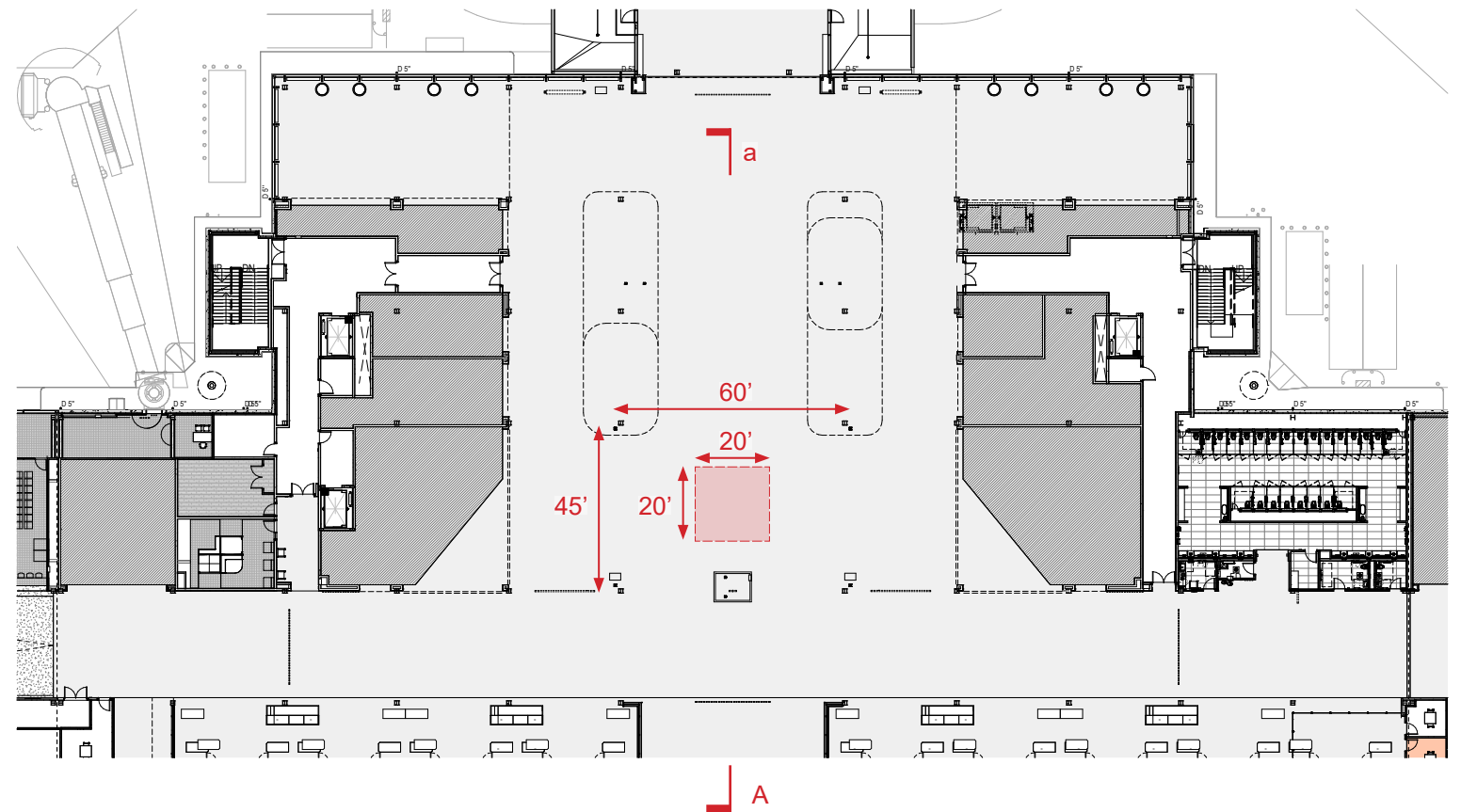
Conceptual perspectives show spatial configuration only. Refer to contract drawings for dimensions, finishes, and final design. No water is to be used in installation in this location.

TERMINAL - RETAIL NODE A

“FOUNTAIN”

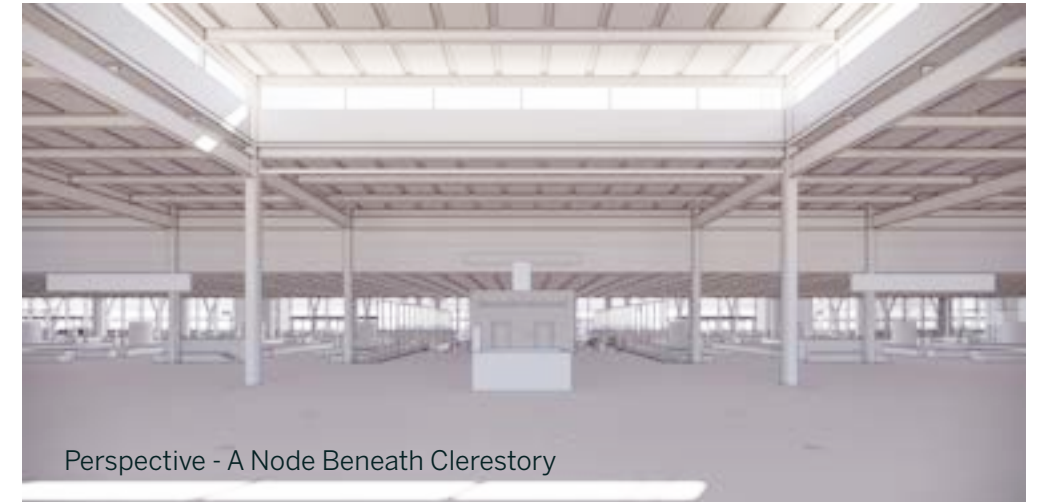
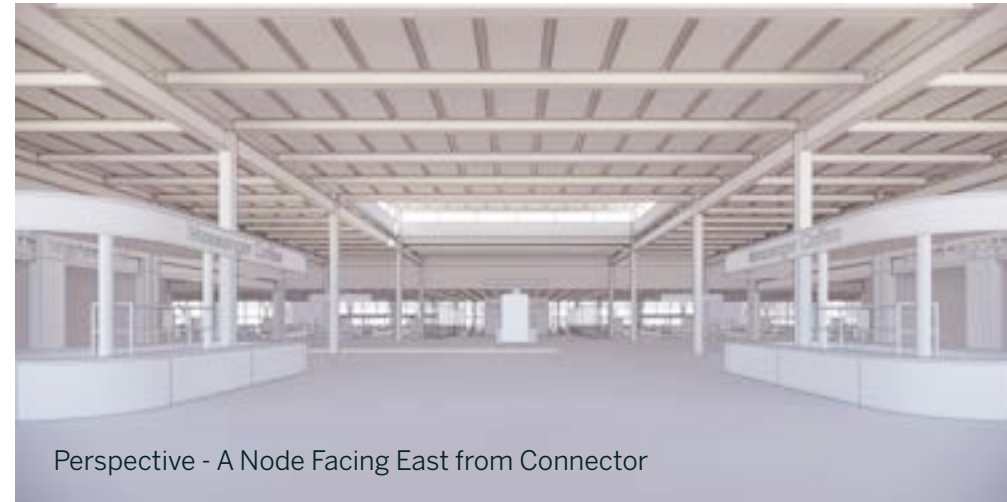
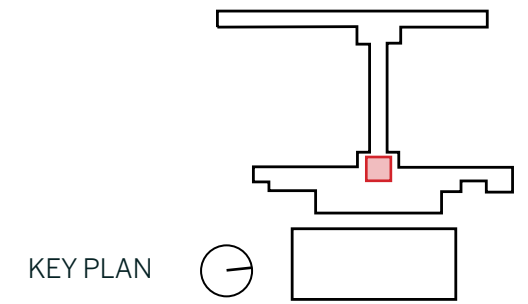


Section Aa - A Concourse Retail Node Facing South
Not to Scale



Plan - A Concourse Retail Node - "Fountain" Allowable Footprint in Red
Not to Scale

TERMINAL - RETAIL NODE A “FOUNTAIN”



Conceptual perspectives show spatial configuration only. Refer to contract drawings for dimensions, finishes, and final design.