

# GARAGE - STAIRWELLS

## HANGING INSTALLATIONS

### LOCATION DESCRIPTION:

The 2 west stairs of the garage located directly adjacent to the elevated roadway connecting arrivals and departures levels is the primary pedestrian vertical circulation in the garage. These 2 large vertical glass towers stand outside the footprint of the garage and within the gap between the roadway and garage. The stair extends all seven levels and is 75' tall or 90' from roof to lowest level floor. The stair is a switchback concrete stair structured off the concrete wall of the elevator and concrete crucible column at the opposing landing. The stair is generally overall 30' long and 12' wide. Each run of the stair is 4'-8" wide with a 2' wide gap between. The guardrails are side mounted to the stair and are steel pipe rail.

### COMMISSION DESCRIPTION:

Two hanging installations (one per stairwell), located in either: a) the gap between stair runs, or; b) directly inside the glass enclosure, or; c) on the 7 story concrete wall that separates the elevator shaft from stairs. The gap between stair runs is approximately 17'-6" long, 2'-0" wide, and 90 feet tall. The glass area between mullions varies but generally 6'x12' and 10" deep. Art can be suspended from the roof structure and / or supported from the ground and is permitted to extend the full height of the stair shaft. Visitors will be able to touch or interact with this installation. This piece is meant to illuminate and enliven the vertical circulation during the day and night. The artist may interpret these installations as a pair (diptych) or as duplicate pieces.

### STRUCTURAL REQUIREMENTS:

Load on roof structure can not exceed 500lbs point load located in the center of the roof and installation area or alternatively multiple point loads within the installation area totaling no more than 500 lbs, example 5 point loads of 100lbs equally spaced. Any foundation needed to be provided by artist. Attachment to stair stringers or rails is discouraged and only available for stabilization. Engineering of installation to be provided by artist. Any structural attachments to be minimized and concealed or as discrete as possible. All attachments to garage structure(s) to be approved by project structural engineer. Interaction between art installation supports and ceiling to be approved by project architect.

### ELECTRICAL REQUIREMENTS:

The existing electrical service is ample and sufficient to be utilized by the installation as needed. There will be dedicated 120 single phase service available to the installation. Additional quantity of circuits and drivers to control lighting or other features of the installation will be provided by the artist and or their fabricator. While there is lighting and power in this space it is dedicated to lighting the spaces not the art piece(s).

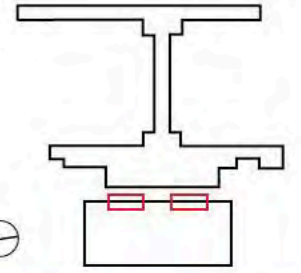
### MECHANICAL REQUIREMENTS:

The stair enclosure is not fully climate controlled. The enclosure is heated at the top level via radiant heat, no cooling is provided in the stair enclosure. An exhaust vent is provided at the top of the enclosure and actuated by thermostat.

### LIFE SAFETY REQUIREMENTS:

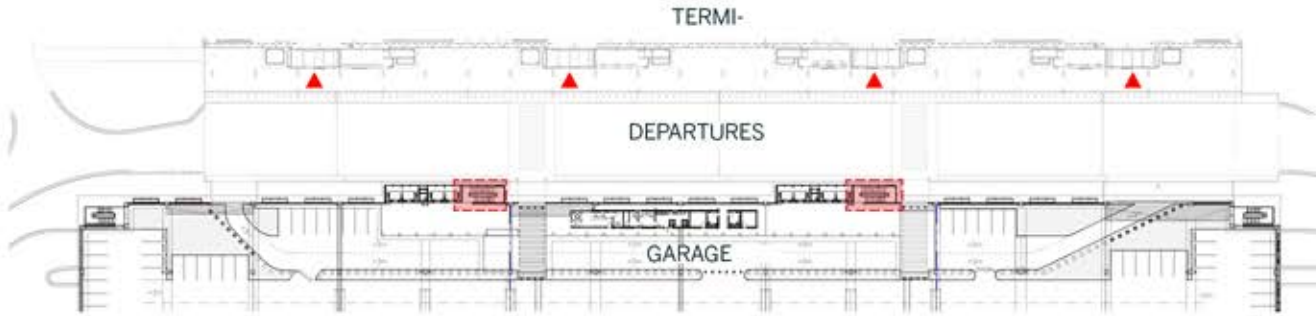
The installation shall not obstruct paths of passenger circulation or egress. The installation shall conform to relevant codes, including IBC 2012 and NFPA 13. The stair is not a fully enclosed and rated enclosure. The installation will be viewed in the code as an interior finish and will need to be of noncombustible material and comply with Class A or B requirements per IBC table 803.9. If fabric is used, it will need to meet NFPA 701. Class A Flame Spread index 0-15; smoke developed index 0-450. Class B Flame Spread index 26-75; smoke development index 0-450.

KEY PLAN 

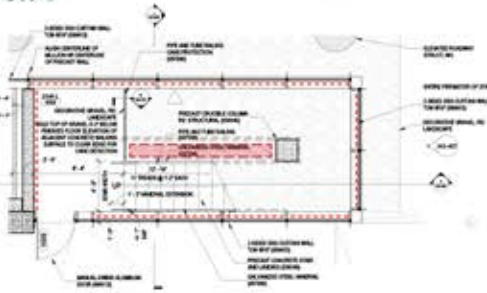




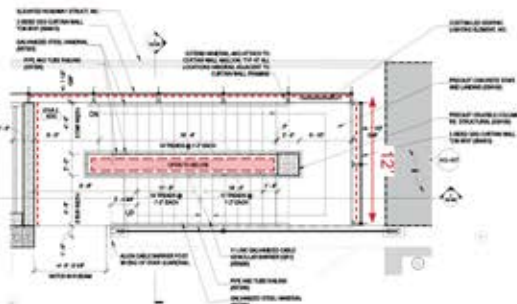
# GARAGE - STAIRWELLS HANGING INSTALLATIONS



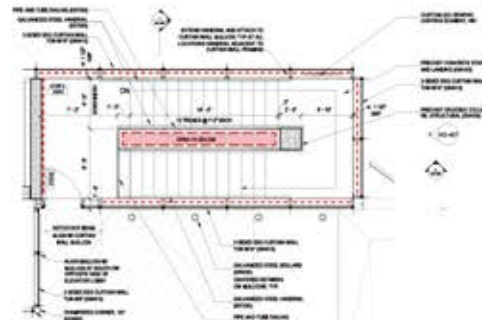
Partial Plan - Elevated Roadway and Garage  
Not To Scale



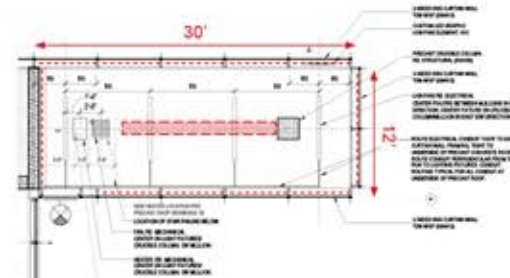
Partial Plan - West Stair Level 1  
Not to Scale



Partial Plan - West Stair Level 3-6  
Not to Scale

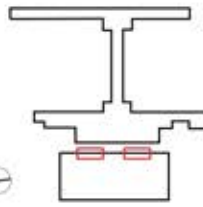


Partial Plan - West Stair Level 7  
Not to Scale

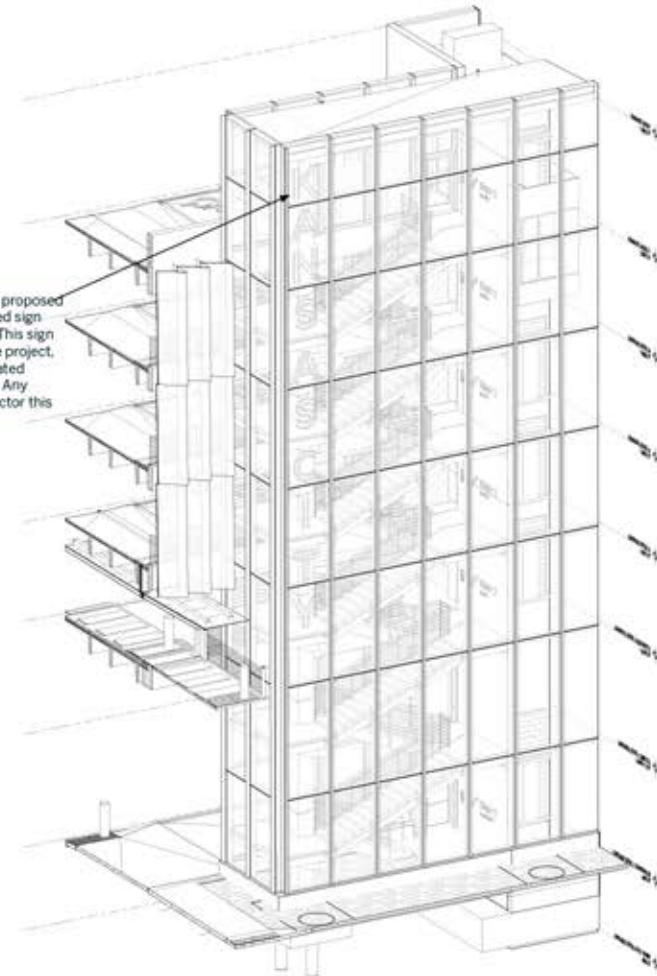


Partial Plan - West Stair Reflected Ceiling Plan  
Not to Scale

KEY PLAN



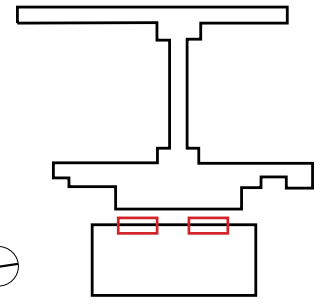
Kansas City Sign is a proposed double line illuminated sign in the style of neon. This sign is currently not in the project, but may be incorporated during construction. Any installation should factor this into the proposal.



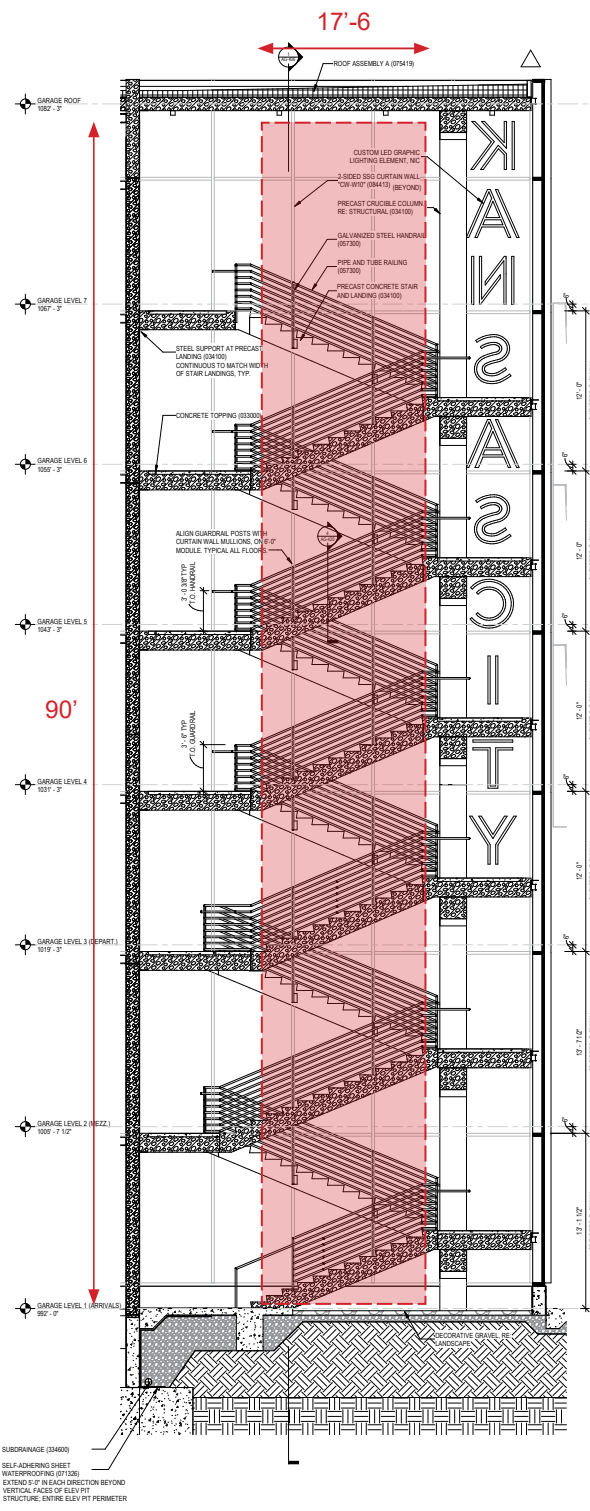
Axonometric - Partial West Stair and Elevator  
Not To Scale



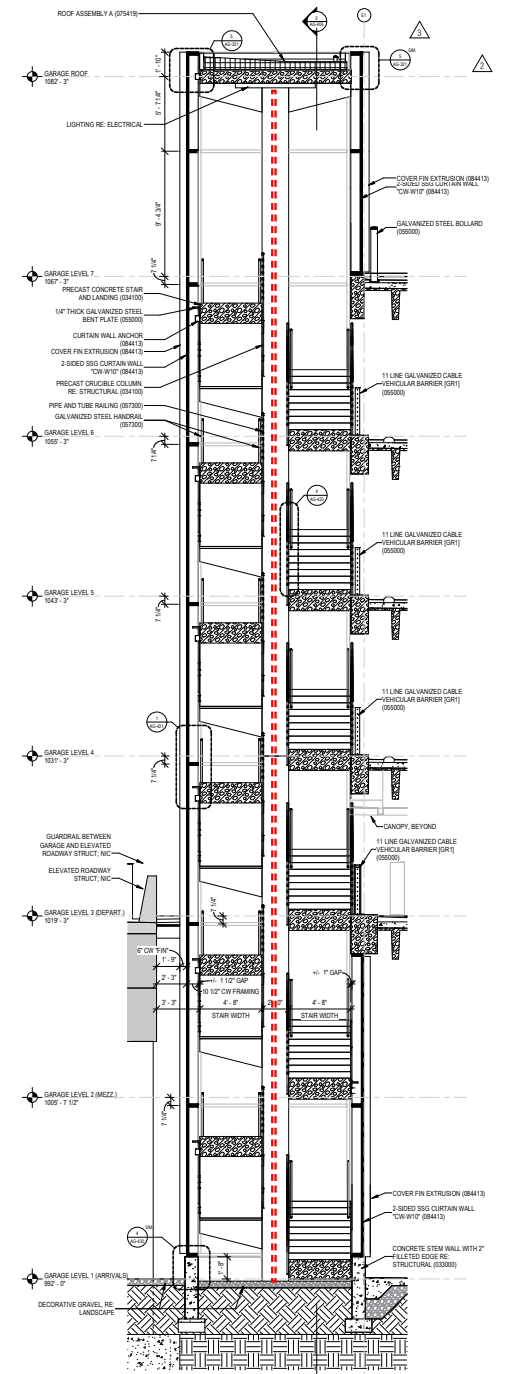
# GARAGE - STAIRWELLS HANGING INSTALLATIONS



KEY PLAN

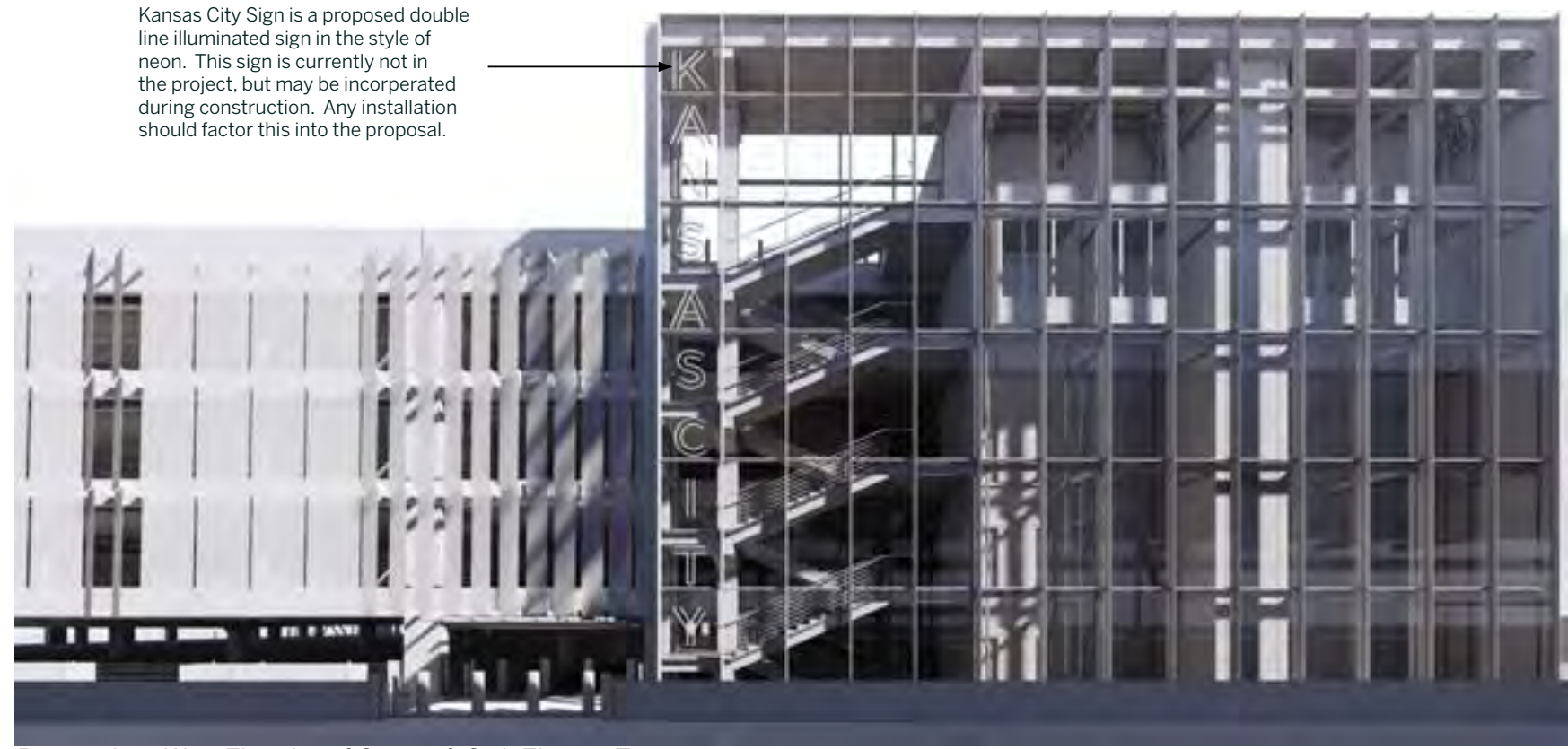


North South Stair Section - Looking West  
Not to Scale

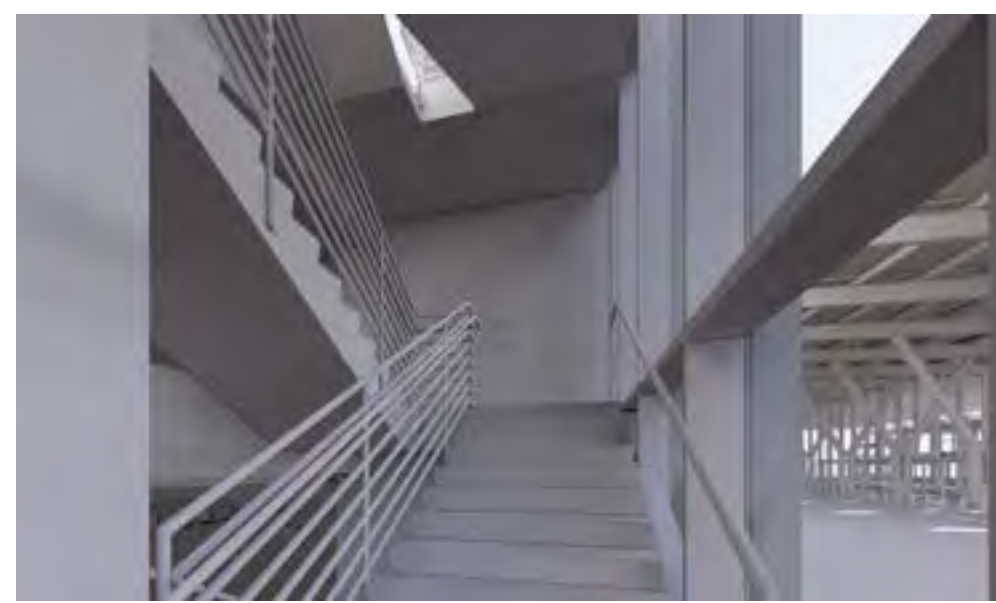


East West Stair Section - Looking North  
Not to Scale

Kansas City Sign is a proposed double line illuminated sign in the style of neon. This sign is currently not in the project, but may be incorporated during construction. Any installation should factor this into the proposal.



Perspective - West Elevation of Garage & Stair Elevator Tower



Perspective - Level 3 West Stair



Perspective - Level 1&2 West Stair at Commercial Lanes

Conceptual perspectives show spatial configuration only. Refer to contract drawings for dimensions, finishes, and final design.