

ARRIVALS ROADWAY LIGHTING INSTALLATION

LOCATION DESCRIPTION:

This piece(s) of art is located on the ceiling above the two pedestrian crossing between the garage and terminal at the arrivals curb below the elevated roadway and garage commercial lanes. The pieces extends from the furthest east edge of the roadway at the terminal to the back wall of the garage commercial lanes. This space stitches the garage and terminal structures together as an art threshold to KC.

COMMISSION DESCRIPTION:

These two installations may hang from or be treatments (paint or other media) upon the ceiling structure above the crosswalks. Each of the two crossings is 20 feet wide and 155 feet long (or 3,100 sf). The installations shall not hang lower than 16 feet above the ground level road to maintain clearance for vehicular traffic. The ceiling structure varies in its height but is 16' -20' above the ground level road at its lowest point. The artist may interpret these installations as a pair (diptych) or as duplicate pieces. Miscellaneous signage, lighting and other components of the garage and terminal will need to be factored into the design layout and installation of these pieces. These piece cross between the project boundaries of the garage and the terminal and, as such, will need to be coordinated with both design and construction teams for installation and infrastructure.

STRUCTURAL REQUIREMENTS:

All armatures and supports for the installation shall be provided by and designed by the artist and or their fabricator. The artists shall work with existing project team engineer(s) to verify all current engineering criteria is met; this service will be at the expense of the artist.

Design Criteria Elevated roadway: The precast structure of the elevated roadway contains 25lbs reserve capacity.

Design Criteria Commercial Lanes: The precast structure above the commercial lanes contains 10lbs reserve capacity for moment and shear 1/3 the distance to columns and deflection capacity is to be confirmed. The precast structure is designed for 3lbs per sf for miscellaneous systems, artist and fabricator to coordinate exact loading locations.

ELECTRICAL REQUIREMENTS:

The existing electrical service is ample and sufficient to be utilized by the installation as needed. There will be dedicated 120 single phase service available to the installation. Additional quantity of circuits and drivers to control lighting or other features of the installation will be provided by the artist and or their fabricator. While there is lighting and power in this space it is dedicated to lighting the spaces not the art piece(s).

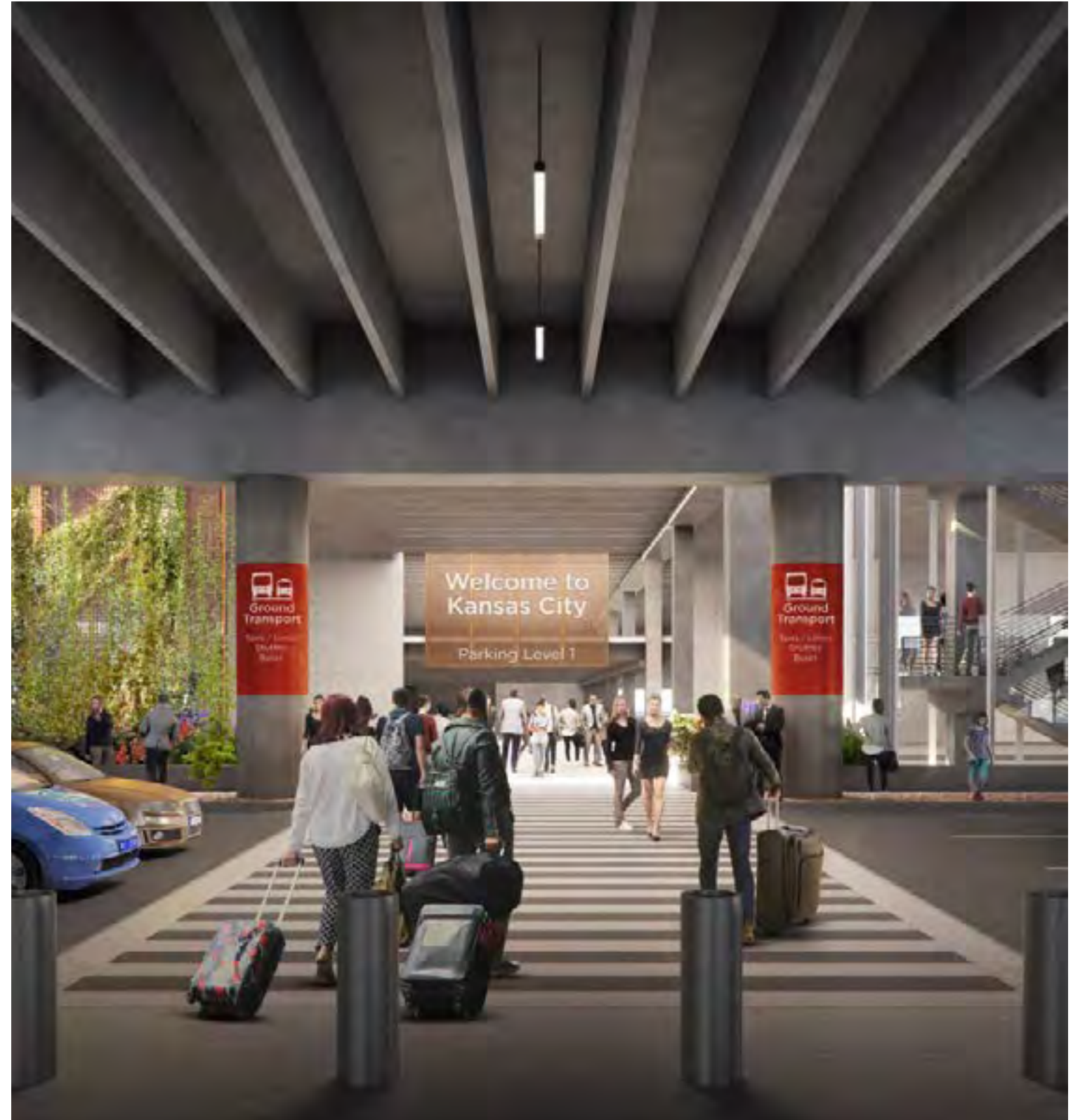
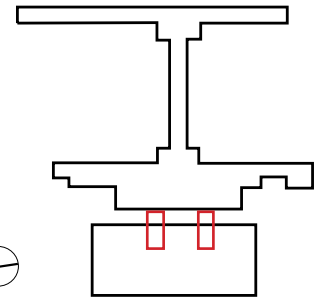
MECHANICAL REQUIREMENTS:

This is primarily outdoor space so will be subject to temperature swings and weather common to Kansas City. The commercial lanes have multiple sets of fans intended to move exhaust air out of the space. In addition to fans sprinkler piping and plumbing piping and drains are present in this area.

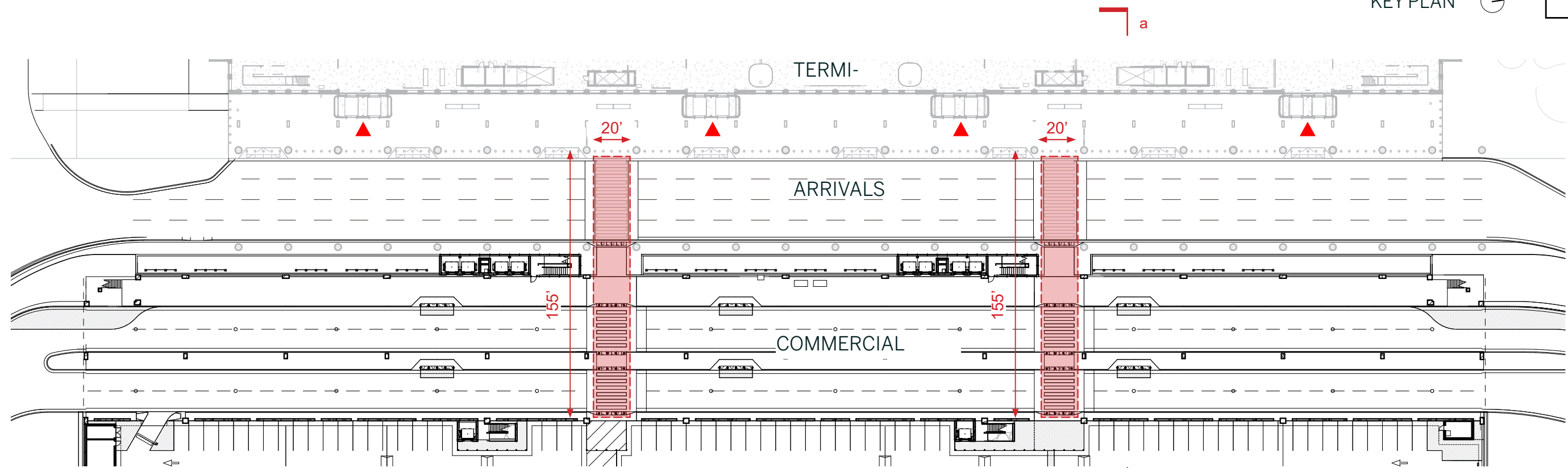
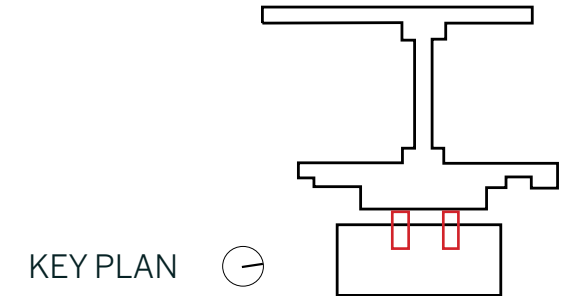
LIFE SAFETY REQUIREMENTS:

The installations shall not obstruct paths of passenger circulation or egress and shall not interfere with vehicular transportation. Installation designs shall be reviewed and approved by project traffic engineer for safety. Fire sprinklers heads are located within the ceiling in this space and shall not be blocked. Fire sprinkler heads may need to be relocated if covered by the art piece, using the art commission budget . The art installation shall conform to the relevant codes including IBC 2012 and NFPA 13. All materials used must be within the fire and smoke classifications specified by code.

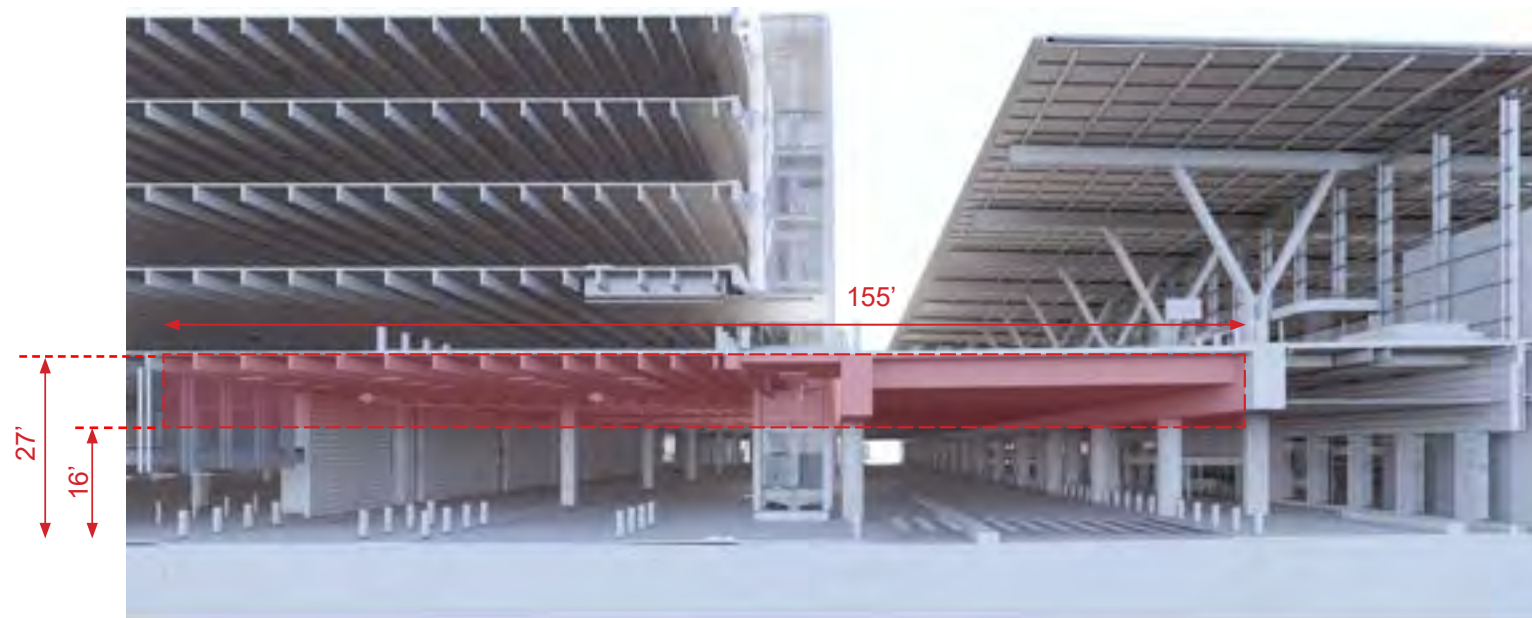
KEY PLAN 



ARRIVALS ROADWAY LIGHTING INSTALLATION



Partial Plan - Level 1 Pedestrian Crossing at Commercial Lanes & Arrivals Curb
Not to Scale



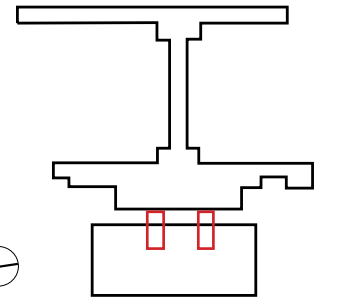
Partial Section Aa - Check-in Hall - Looking South
Not To Scale



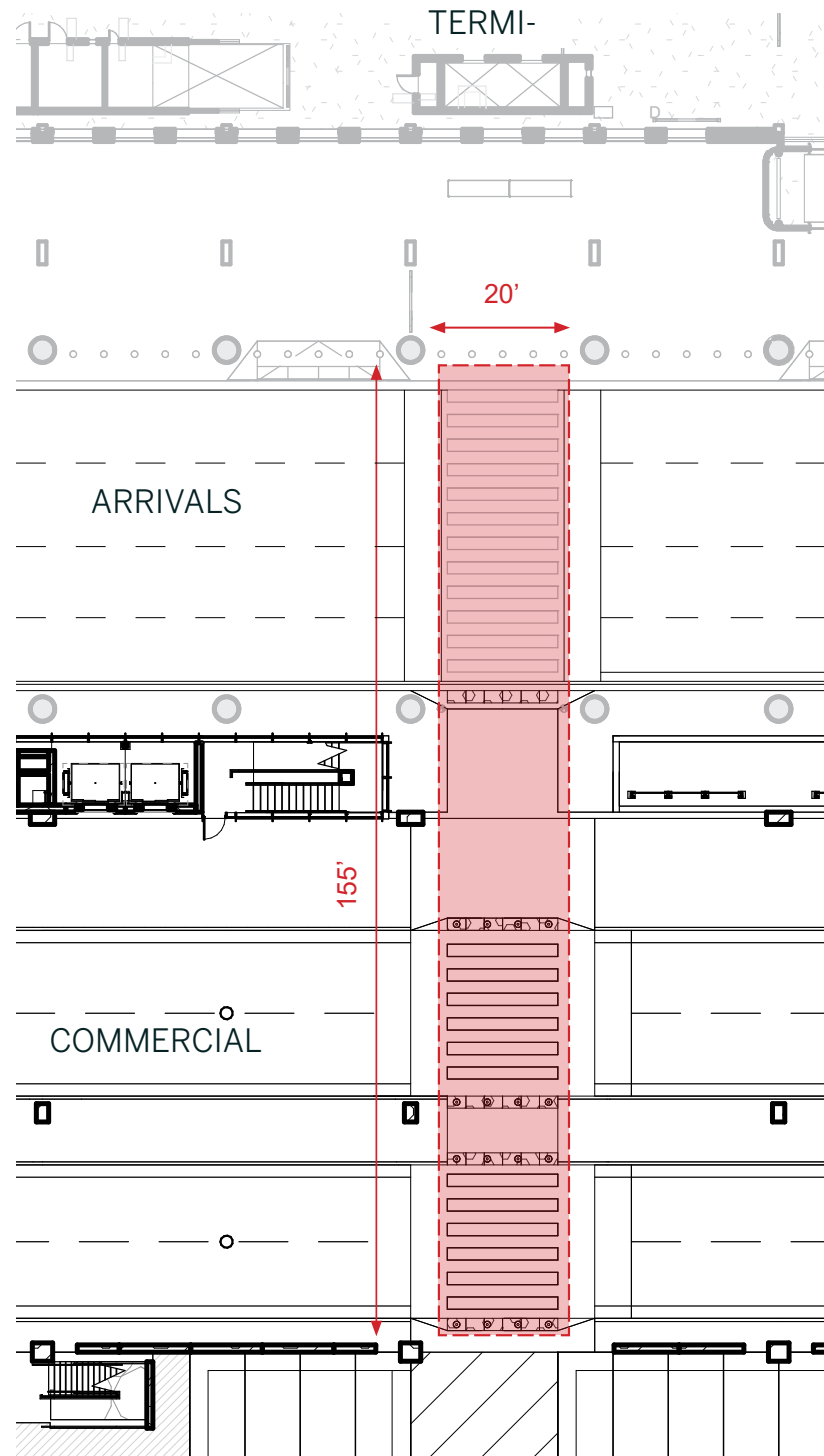
Perspective - Commercial Lanes looking West to Arrivals Curb & Terminal

Conceptual perspectives show spatial configuration only. Refer to contract drawings for dimensions, finishes, and final design.

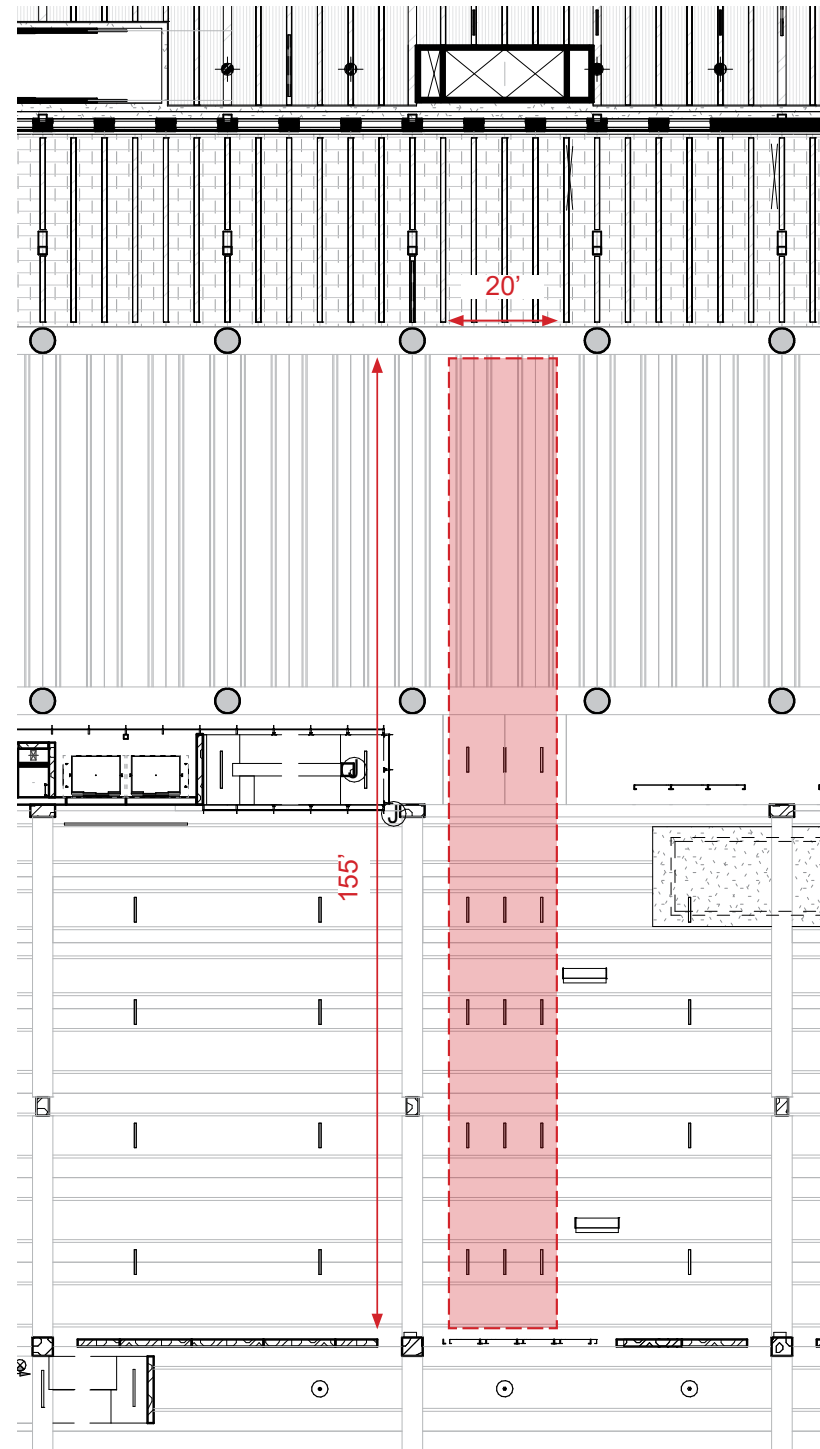
ARRIVALS ROADWAY LIGHTING INSTALLATION



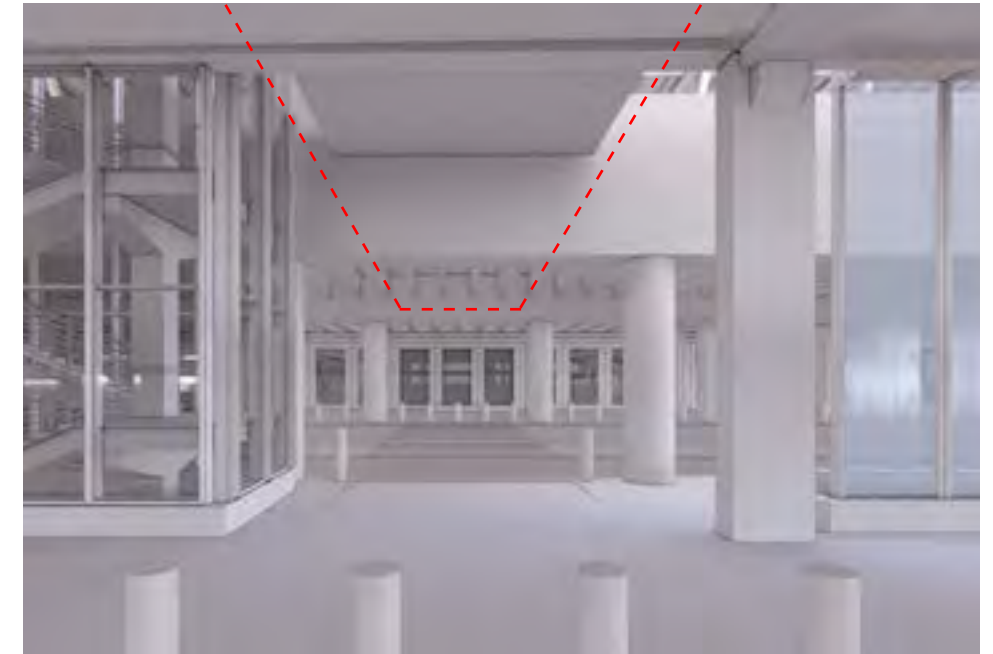
KEY PLAN 



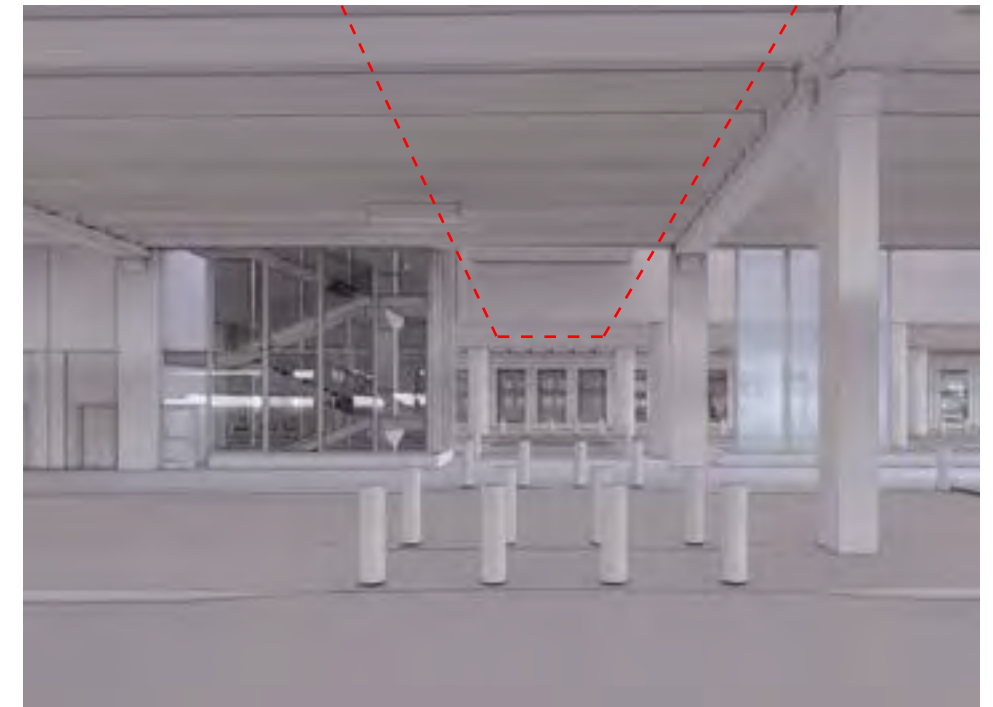
Partial Plan - Level 1 Pedestrian Crossing
Not to Scale



Partial Reflected Ceiling Plan - Level 1 Pedestrian Crossing
Not to Scale



Perspective - Commercial Lanes looking West



Perspective - Commercial Lanes looking West

Conceptual perspectives show spatial configuration only. Refer to contract drawings for dimensions, finishes, and final design.