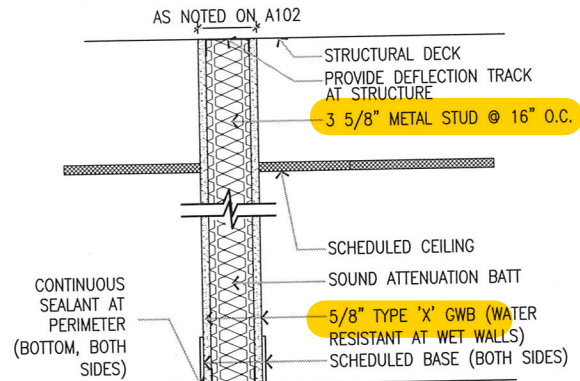


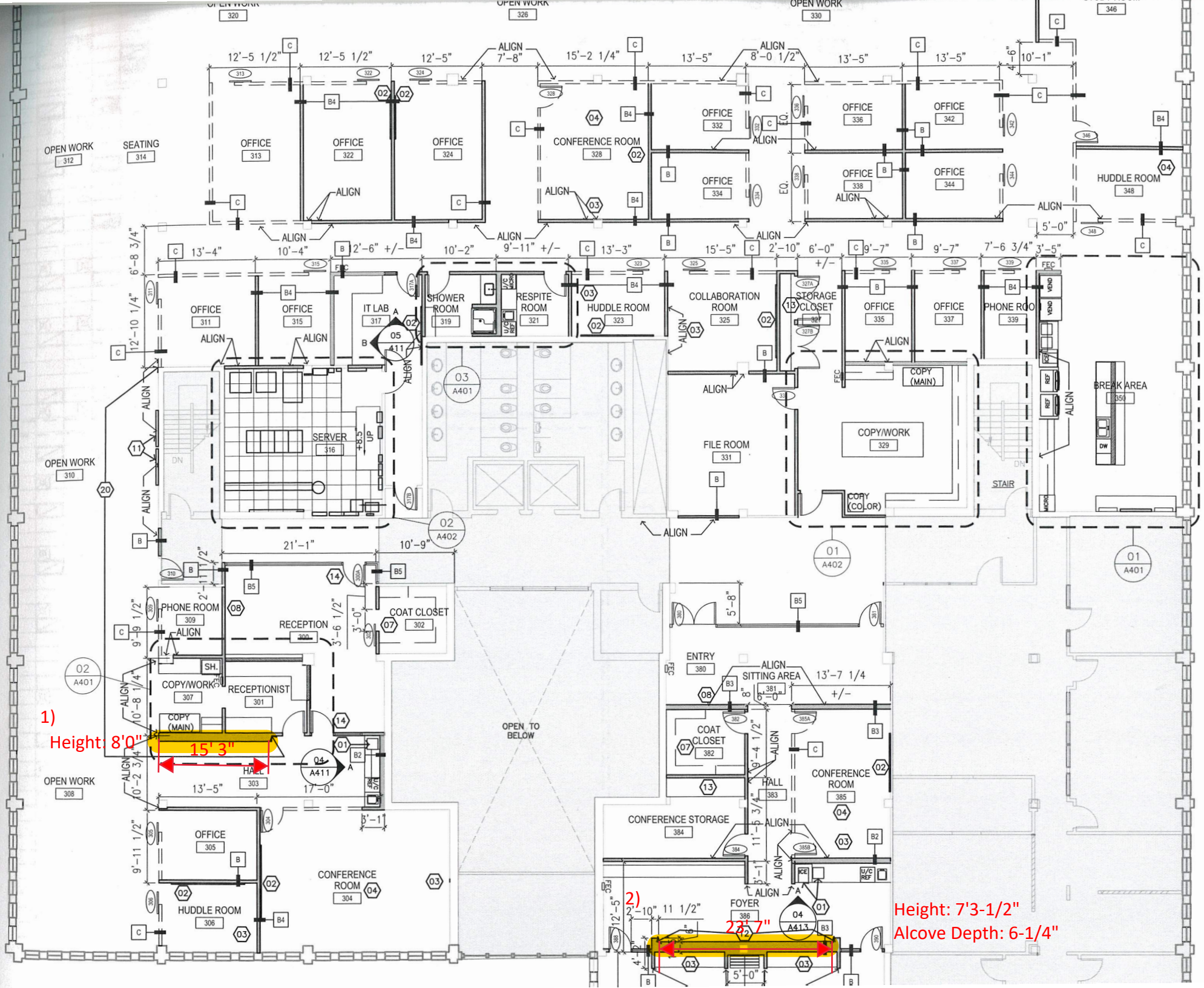
- A** STANDARD WALL TYPE
- WALL TO HAVE SOUND ATTENUATION BATT.
  - GYP BD. ON BOTH SIDES OF WALL TO EXTEND 6" MIN. ABOVE FINISH CEILING, TYP.
- A2** PARTIAL-HEIGHT PLUMBING WALL
- 6" MTL STUD @ 16" O.C.
  - NO SOUND ATTENUATION BATT.
  - PROVIDE WATER-RESISTANT GWB ON WET-SIDES OF WALLS
  - SEE ELEVATIONS AND DETAIL DRAWINGS FOR WALL HEIGHT
- A3** PARTIAL-HEIGHT WALL
- 3 5/8" MTL STUD @ 16" O.C.
  - NO SOUND ATTENUATION BATT.
  - SEE ELEVATIONS AND DETAIL DRAWINGS FOR WALL HEIGHT
- A4** PARTIAL-HEIGHT THICKENED WALL
- 6" STUD + 3 5/8" MTL STUD @ 16" O.C.
  - GWB ON FINISHED SIDE OF WALL ONLY
  - FINISHED WALL THICKNESS: 10 1/4" WIDE
  - FINISHED WALL HEIGHT: 3'-6" AFF

PROVIDE STUD TRACK BLOCKING AT TOP OF GYPSUM BOARD ON PARTITIONS WITHOUT ACOUSTIC BATT. INSULATION.



- B** - WALL TO HAVE SOUND ATTENUATION BATT.  
- GYP BD. ON BOTH SIDES OF WALL TO DECK OR ROOF ASSEMBLY ABOVE.
- SOUND SEALANT AT ALL PENETRATIONS AND POINTS OF CONNECTION
- CONTINUOUS SEALANT AT TOP AND BOTTOM OF WALL, BOTH SIDES.
- B2** - PLUMBING WALL: PROVIDE WATER-RESISTANT GWB ON WET-SIDES OF WALLS
- 6" MTL STUD @ 16" O.C.
- B3** - THICKENED WALL, SEE A102 FOR FINISHED THICKNESS
- B4** - WALL TO HAVE SOUND ATTENUATION BATT., FULL HEIGHT & WIDTH
- GYP BD. ON BOTH SIDES OF WALL TO DECK OR ROOF ASSEMBLY ABOVE.
  - SOUND SEALANT AT ALL PENETRATIONS AND POINTS OF CONNECTION
  - ADD (1) LAYER OF QUIETROCK FULL HEIGHT & WIDTH INSIDE FACE OF ROOM FOR ADDED SOUND CONTROL.
- B5** - STOREFRONT TO 7'-10" AFF WITH 3 5/8" THICK HEADER TO DECK ABOVE, WITH SOUND ATTENUATION BATTS





1)  
Height: 8'0"

15'3"

2)  
Height: 7'3-1/2"  
Alcove Depth: 6-1/4"

22'7"