

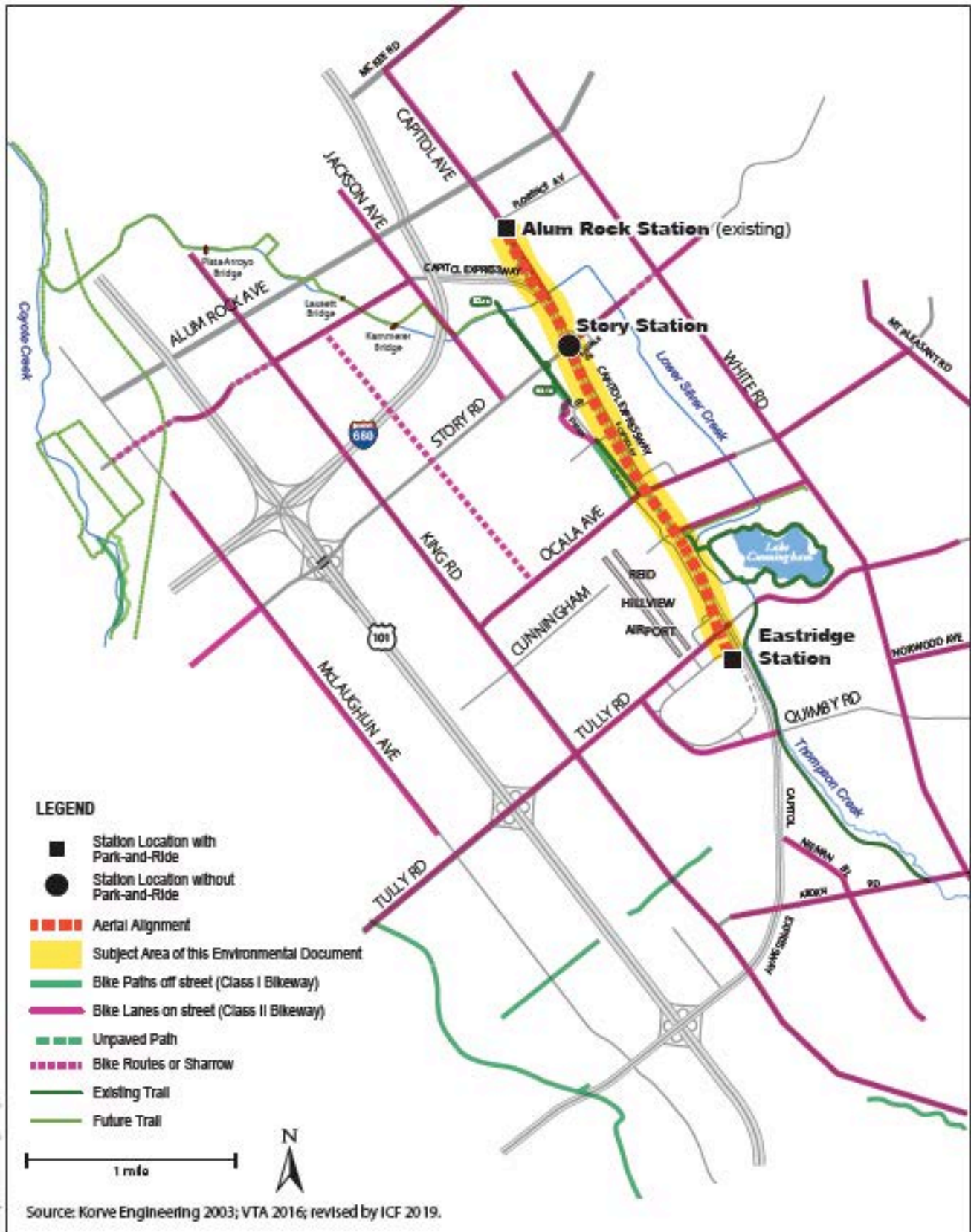
APPENDIX I

Additional Context
site overview, renderings, photos

Eastridge to BART Regional Connector Site Overview



Context: Story Road and Eastridge Stations connecting to existing Alum Rock Station



Overview of Story Road and East Ridge Stations
 In context to Light Rail, Bus Rapid Transit, and Trails

Existing Aerial View looking South on Capitol Expressway
at Story Road (Current Condition)



Proposed Light Rail Extension
Aerial looking South on Capitol Expressway at Story Road



Story Road Station (Site Plan and Rendering)



Story Road Station (Renderings)

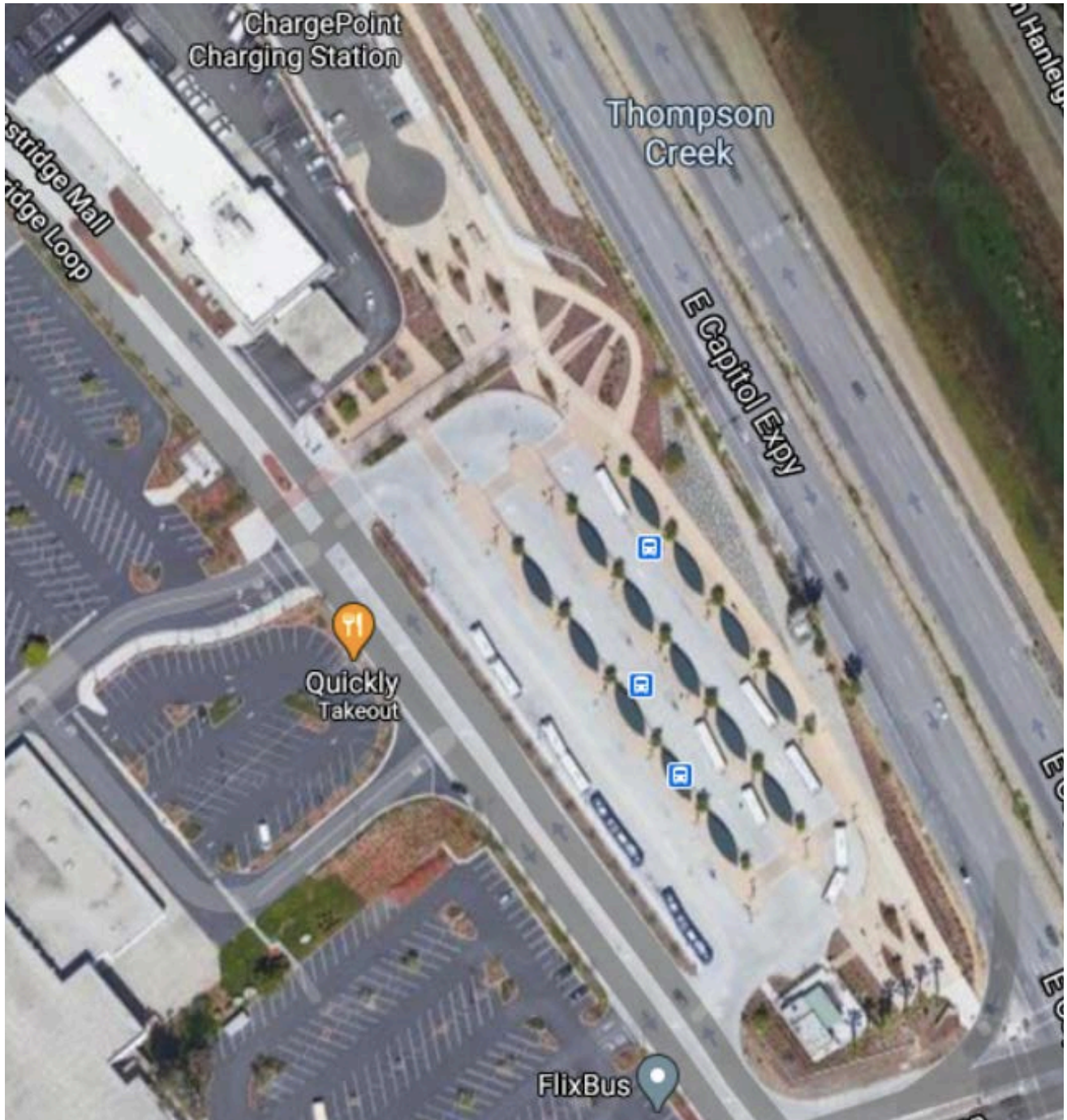


SW Corner looking South



Story Rd. looking East

Eastridge Transit Center – Existing Aerial View



Existing Aerial View

Eastridge Station (Site Plan and Rendering)





Aerial view Eastridge Station (existing view looking west towards Mall)



Street View Eastridge Station from East Capitol Expy (existing view of bus shelters)