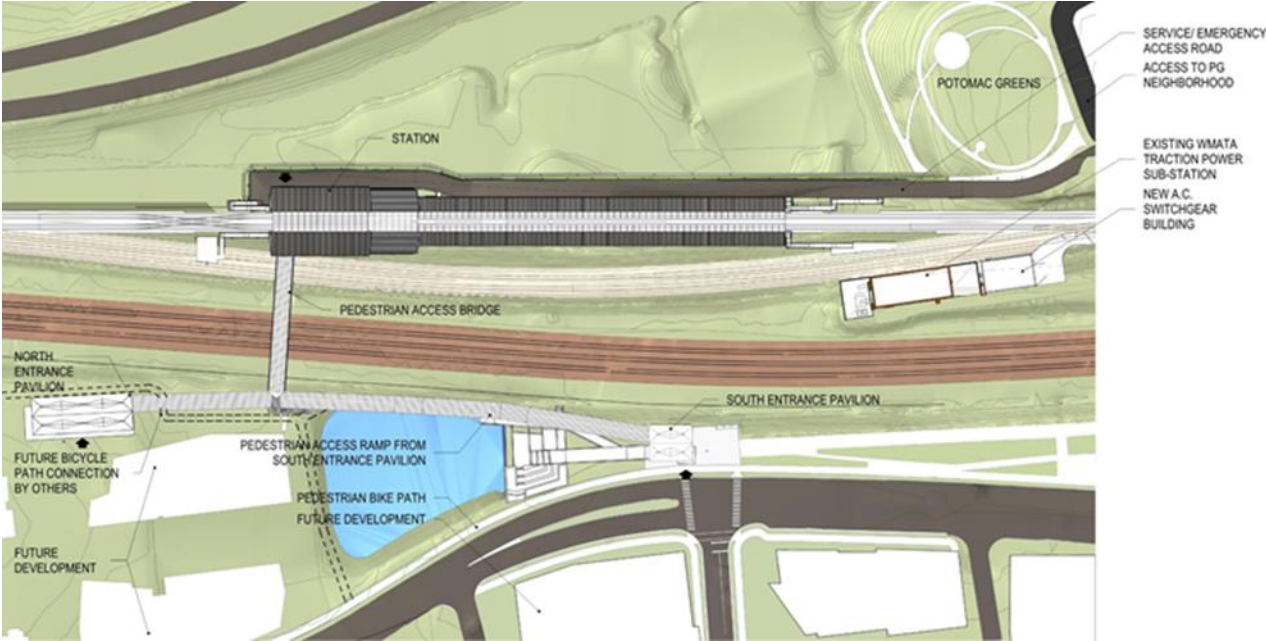


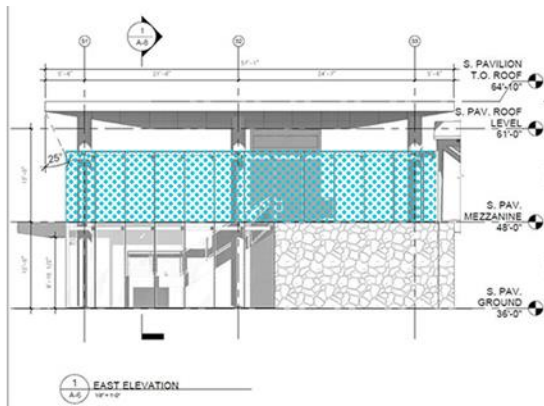
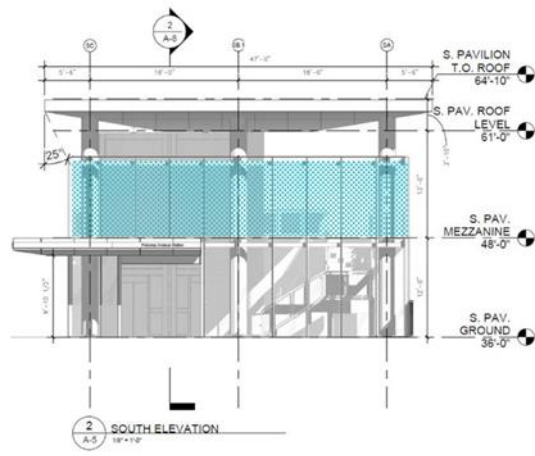
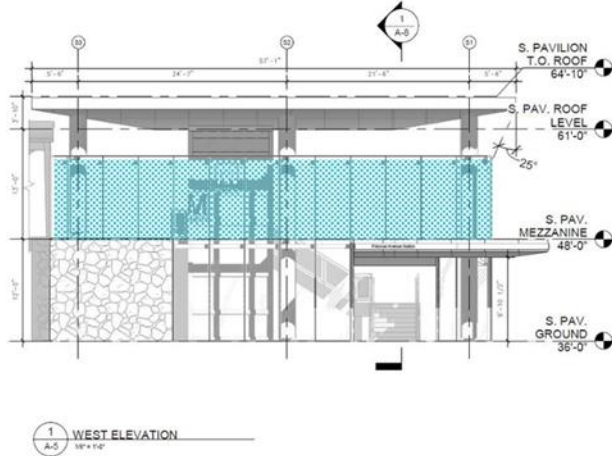
PROJECT INFORMATION-REQUEST FOR QUALIFICATIONS POTOMAC YARD METRORAIL STATION PUBLIC ART PROJECT

POTOMAC YARD METRORAIL STATION



South Pavilion

As with the North pavilion, the Artists/Artist Teams are asked to consider metal screens (perforated, laser cut, woven wire, or similar techniques) to be attached on the exterior of the South entrance pavilion as shown below. The identified space for the artwork wraps the upper/mezzanine level on the west, south, and east, glazed façades of the pavilion. The screens will be designed to be durable, made of lightweight materials, and offer a high level of transparency. The goal of the artwork is to provide a stimulating visual experience for the community and the customers as they enter and exit the station.



Design Challenges and Requirements

- The upper level of the pavilion, between the glazing and the roof, is open to the elements
- A high level of transparency must be maintained
- Visibility of all way finding signage must be maintained
- Natural and artificial lighting must be taken into consideration