



This drawing is classified as part of an unpublished collection of visual art. Under the 1978 copyright act, it is an exclusive original work of authorship. None of these ideas, images, or drawings, depicted on this sheet may be reproduced or transmitted in any form or by any means without the express prior written permission of the architect.

**Render - South View**  
**Salt Lake City Liquor Store**



**JACOBY ARCHITECTS**

This drawing is classified as part of an unpublished collection of visual art. Under the 1978 copyright act, it is an exclusive original work of authorship. None of these ideas, images, or drawings, depicted on this sheet may be reproduced or transmitted in any form or by any means without the express prior written permission of the architect.

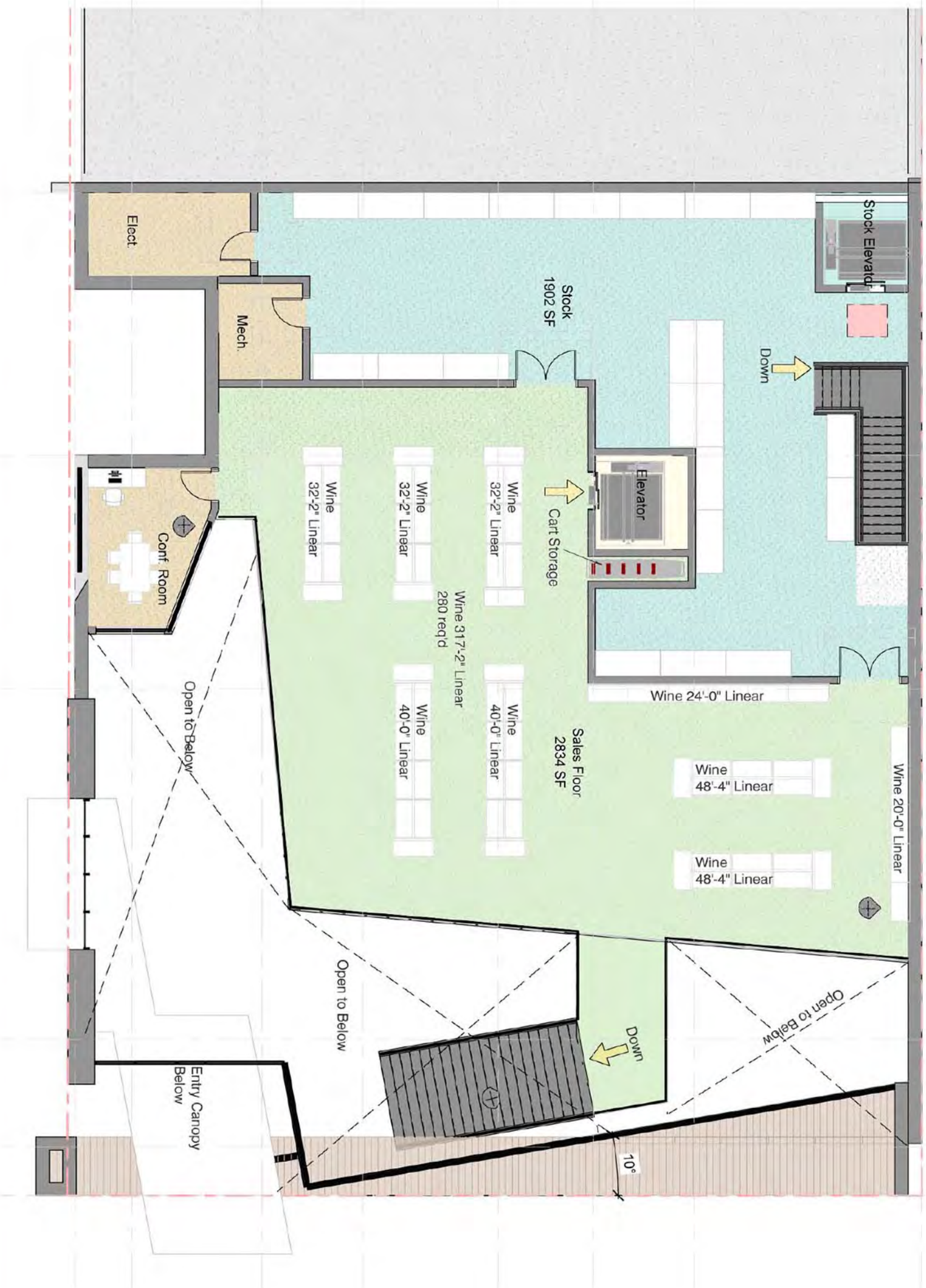
**Interior Rendering - Looking Toward South Vestibule**  
**Salt Lake City Liquor Store**

Sheet Number  
**GN 222**  
03 11 2021









This drawing is classified as part of an unpublished collection of visual art. Under the 1978 copyright act, it is an exclusive original work of authorship. None of these ideas, images, or drawings, depicted on this sheet may be reproduced or transmitted in any form or by any means without the express prior written permission of the architect.

Second Level Floor Plan - Scale 3/32" = 1'-0"  
Salt Lake City Liquor Store





**JACOBY ARCHITECTS**

This drawing is classified as part of an unpublished collection of visual art. Under the 1978 copyright act, it is an exclusive original work of authorship. None of these ideas, images, or drawings, depicted on this sheet may be reproduced or transmitted in any form or by any means without the express prior written permission of the architect.

## Interior Rendering Foothill Liquor Store

Sheet Number  
**GN 199**  
03.25. 2021





This drawing is classified as part of an unpublished collection of visual art. Under the 1978 copyright act, it is an exclusive original work of authorship. None of these ideas, images, or drawings, depicted on this sheet may be reproduced or transmitted in any form or by any means without the express prior written permission of the architect.

**Site Plan** Scale: 1/64" = 1'-0"  
**Foothill Liquor Store**

